

Converting Colors

CIELCh(62, 28.831, 69.904)

Have a look what the booklet for
CIELCh(62, 28.831, 69.904) contains.

CIELCh(62, 28.822, 69.983)	3
<i>Conversions</i>	4
<i>Details</i>	6
<i>Harmonies</i>	11
<i>Previews</i>	20
<i>Color Blindness Simulation</i>	23
<i>CSS Examples</i>	26

Color

CIELCh(62, 28.822, 69.983)

Conversions

Conversions Part 1

Format	Color
Hex	B68E66
RGB	182, 142, 102
RGB Percent	71%, 56%, 40%
CMY	0.2848, 0.4418, 0.5987
CMYK	0.00, 0.22, 0.44, 0.28
HSL	30°, 36%, 56%
HSV	30°, 44%, 72%
XYZ	31.5159, 30.4025, 16.8619
YIQ	149.4000, 36.6800, -3.9600

Conversions

Conversions Part 2

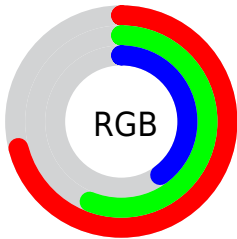
Format	Color
RYB	182, 182, 102
Decimal	11964006
CIELab	62.00, 9.87, 27.08
CIELCh	62, 28.822, 69.983
Yxy	30.4025, 0.4000, 0.3859
Android (android.graphics.Color)	4290154086 (0xFFB68E66)
YUV	149.4000, -23.3682, 28.5902
Hunter-Lab	55.1385, 5.5342, 20.4655

Details

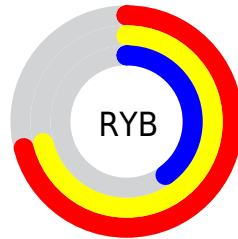
The CIELCh color **62, 28.822, 69.983** is a dark color, and the websafe version is hex **CC9966**. A complement of this color would be **58, 25.433, 263.163**, and the grayscale version is **62, 0.008, 296.813**.

A 20% lighter version of the original color is **82, 28.946, 70.905**, and **42, 28.961, 70.482** is the 20% darker color. If you saturate the color by 10%, you get **59, 36.167, 68.719**, and if you desaturate by 10%, it is **65, 21.745, 71.241**.

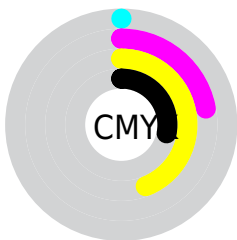
Distribution



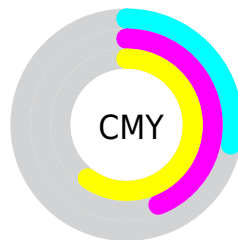
- Red (71%)
- Green (56%)
- Blue (40%)



- Red (71%)
- Yellow (71%)
- Blue (40%)



- Cyan (0%)
- Magenta (22%)
- Yellow (44%)
- Black (28%)



- Cyan (28%)
- Magenta (44%)
- Yellow (60%)

Brightness & Saturation Gradients

These gradients show how the CIELCh color 62, 28.822, 69.983 changes by changing the brightness by 10 percent. The first figure shows a shift by +10% for each color and the second figure -10%.

Similar to the brightness gradients but the following saturation gradients show a change of the CIELCh color 62, 28.822, 69.983 by changing the saturation by 10% instead.

62, 28.822, 69.983

62, 28.822, 69.983

100, 28.822,
69.983

52, 28.822, 69.983

82, 28.822, 69.983

42, 28.822, 69.983

92, 28.822, 69.983

32, 28.822, 69.983

22, 28.822, 69.983

12, 28.822, 69.983

2, 28.822, 69.983

0, 28.822, 69.983

62, 28.822, 69.983

62, 28.822, 69.983

59, 36.167, 68.719

65, 21.745, 71.241

57, 43.672, 67.409

67, 14.971, 72.482

55, 51.095, 65.992

70, 8.503, 73.698

52, 57.952, 64.319

73, 2.324, 74.805

50, 63.432, 62.106

76, 3.590, 256.236

49, 66.258, 60.629

79, 9.265, 257.331

82, 14.728,
258.433

85, 20.001,
259.501

87, 20.483,
250.527

Harmonies

Complementary

The Complementary color scheme is a pair of colors which are on the opposite of each other on the color wheel.



62, 28.822, 69.983



58, 25.433, 263.163

Rectangle

The Rectangle color scheme consists of four colors that form a rectangle on the color wheel.



62, 28.822, 69.983



62, 28.822, 119.983



62, 28.822, 249.983



62, 28.822, 299.983

Sweetspot

The Sweet Spot groups the original color and five complimentary colors.



62, 28.822, 69.988



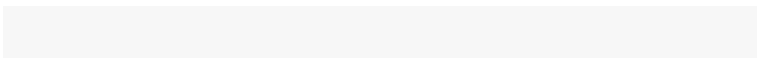
89, 9.837, 73.778



54, 38.421, 347.100



47, 6.975, 73.514



97, 0.011, 296.813



50, 0.007, 296.813

Same Dimension

The Same Dimension uses a secret algorithm to generate beautiful new colors.



62, 28.822, 69.988



76, 44.033, 68.719



72, 41.588, 105.280



37, 3.450, 74.233



42, 58.772, 61.131



5, 8.771, 61.196

Inverse Universe

The Inverse Universe completely reimagines the original color for something new.



58, 25.433, 263.163



69, 37.693, 265.890



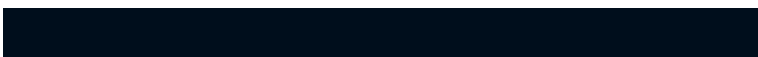
47, 46.505, 295.584



37, 3.377, 256.678



34, 49.272, 283.418



4, 10.213, 267.354

Previews

White Background



This preview shows how the CIELCh color 62, 28.822, 69.983 looks on a white background.

Color Contrast Check

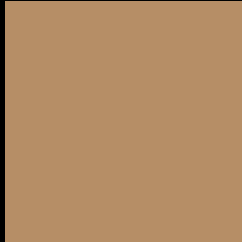
Large Text (above 18pt) WCAG AA × Fail

Any Text WCAG AA × Fail

Large Text (above 18pt) WCAG AAA × Fail

Any Text WCAG AAA × Fail

Black Background



This preview shows how the CIE LCh color 62, 28.822, 69.983 looks on a black background.

Color Contrast Check

Large Text (above 18pt) WCAG AA ✓ Pass

Any Text WCAG AA ✓ Pass

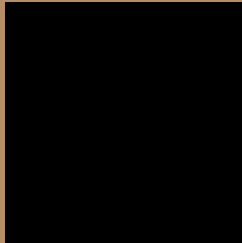
Large Text (above 18pt) WCAG AAA ✓ Pass

Any Text WCAG AAA ✓ Pass

If you want to check with other color combinations, try the [Color Contrast Checker](#).

CIELCh 62, 28.822, 69.983

Background



This preview shows how black text looks on a background with the CIELCh color 62, 28.822, 69.983.



This preview shows how white text looks on a background with the CIELCh color 62, 28.822, 69.983.

Color Blindness Simulation

Color vision deficiency is a very complex topic, and I could not describe the different causes any better than Wikipedia does, so if you want to learn more, you should check out their [article about color blindness](#).

Dichromacy



Original Color

62, 28.822, 69.983

Protanopia

62, 25.496, 95.670

Deuteranopia

62, 28.304, 74.622



Tritanopia
62, 20.696, 6.102

Trichromacy



Original Color
62, 28.822, 69.983

Protanomaly
62, 25.869, 85.772

Deuteranomaly
62, 28.400, 72.634

Tritanomaly
62, 19.753, 34.142

Monochromacy



Original Color
62, 28.822, 69.983

Achromatopsia
62, 0.008, 296.813

Achromatomaly
62, 9.944, 71.387

CSS Examples

Text

The CSS property to change the color of the text to CIELCh 62, 28.822, 69.983 is called "color". The color property can be set on classes, ids or directly on the HTML element.

This example shows how text in the color `rgb(182, 142, 102)` looks like.

```
.text, #text, p{  
    color:rgb(182, 142, 102)  
}
```

If you want to add a text shadow in that color use the text-shadow property, you can generate a text shadow directly with our [CSS Text Shadow Generator](#).

Here you see how black text with a 4 pixel rgb(182, 142, 102) colored shadow looks like.

```
.shadow{ text-shadow: 4px 4px 2px rgb(182, 142, 102) }
```

Border

The CSS property to change the border of an element to CIELCh 62, 28.822, 69.983 is called "border". The border property can be set on classes, ids or directly on the HTML element.

This example shows the color as border, it can be applied via the CSS property "border" or "border-color".

```
.border, #border, table{ border:4px solid rgb(182, 142, 102) }
```

If only the border color should be changed use the property `border-color`.

```
.border{ border-color:rgb(182, 142, 102) }
```

If you want to add a box shadow in that color use:

Here you see how a box with a 4 pixel `rgb(182, 142, 102)` colored shadow looks like.

```
.boxshadow{ -moz-box-shadow:4px 4px 4px  
4px rgb(182, 142, 102); -webkit-box-  
shadow:4px 4px 4px 4px rgb(182, 142, 102);  
box-shadow:4px 4px 4px 4px rgb(182, 142,  
102) }
```

Background

The CSS property to change the background color of an element to CIELCh 62, 28.822, 69.983 is called "background". The background property can be set on classes, ids or directly on the HTML element.

```
.background, #background, body{  
background: rgb(182, 142, 102) }
```

If only the background color should be changed can be used:

```
.background{ background-color: rgb(182,  
142, 102) }
```

This example shows the color as background, it is applied via the CSS property "background".

To optimize and compress your CSS code, you can use our [online CSS compressor and optimizer](#) based on csstidy. If you want to create a linear or radial gradient as background or border, check our [CSS Gradient Generator](#).

Hey! You found this booklet interesting? Support Converting Colors with the new Membership Option!

The pro membership hides all ads, plus gives you double the colors in the color bucket, and more awesome pro features!

[Learn more, Memberships starting at \\$2.50/m!](#)

**Follow me
on Twitter!**

@ConvertingColor