

Converting Colors

CIELCh(62, 30.372, 46.216)

Have a look what the booklet for
CIELCh(62, 30.372, 46.216) contains.

CIELCh(62, 30.369, 46.299)	3
<i>Conversions</i>	4
<i>Details</i>	6
<i>Harmonies</i>	11
<i>Previews</i>	20
<i>Color Blindness Simulation</i>	23
<i>CSS Examples</i>	26

Color

CIELCh(62, 30.369, 46.299)

Conversions

Conversions Part 1

Format	Color
Hex	C58770
RGB	197, 135, 112
RGB Percent	77%, 53%, 44%
CMY	0.2271, 0.4703, 0.5605
CMYK	0.00, 0.31, 0.43, 0.23
HSL	16°, 42%, 61%
HSV	16°, 43%, 77%
XYZ	34.6515, 30.4025, 19.3930
YIQ	150.9160, 44.3350, 5.9910

Conversions

Conversions Part 2

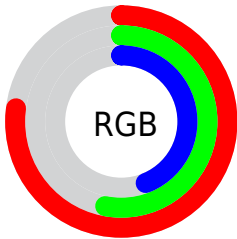
Format	Color
RYB	197, 144, 112
Decimal	12945264
CIELab	62.00, 20.98, 21.96
CIElCh	62, 30.369, 46.299
Yxy	30.4025, 0.4103, 0.3600
Android (android.graphics.Color)	4291135344 (0xFFC58770)
YUV	150.9160, -19.1856, 40.4157
Hunter-Lab	55.1385, 15.6849, 17.7438

Details

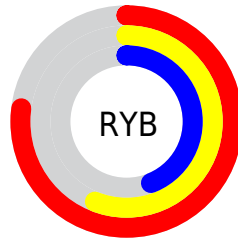
The CIELCh color **62, 30.369, 46.299** is a light color, and the websafe version is hex **CC9966**. A complement of this color would be **68, 22.728, 232.307**, and the grayscale version is **63, 0.008, 296.813**.

A 20% lighter version of the original color is **82, 30.080, 46.851**, and **42, 30.404, 46.445** is the 20% darker color. If you saturate the color by 10%, you get **58, 38.897, 46.252**, and if you desaturate by 10%, it is **66, 22.412, 46.499**.

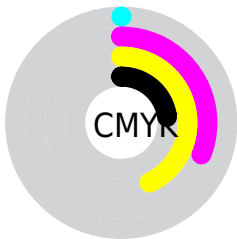
Distribution



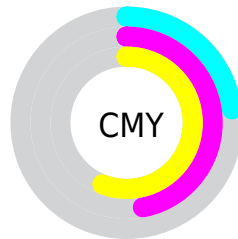
- Red (77%)
- Green (53%)
- Blue (44%)



- Red (77%)
- Yellow (56%)
- Blue (44%)



- Cyan (0%)
- Magenta (31%)
- Yellow (43%)
- Black (23%)



- Cyan (23%)
- Magenta (47%)
- Yellow (56%)

Brightness & Saturation Gradients

These gradients show how the CIELCh color 62, 30.369, 46.299 changes by changing the brightness by 10 percent. The first figure shows a shift by +10% for each color and the second figure -10%.

Similar to the brightness gradients but the following saturation gradients show a change of the CIELCh color 62, 30.369, 46.299 by changing the saturation by 10% instead.

62, 30.369, 46.299

62, 30.369, 46.299

100, 30.369,
46.299

52, 30.369, 46.299

82, 30.369, 46.299

42, 30.369, 46.299

92, 30.369, 46.299

32, 30.369, 46.299

22, 30.369, 46.299

12, 30.369, 46.299

2, 30.369, 46.299

0, 30.369, 46.299

62, 30.369, 46.299

62, 30.369, 46.299

58, 38.897, 46.252

66, 22.412, 46.499

55, 47.935, 46.347

70, 15.034, 46.813

52, 57.288, 46.547

74, 8.205, 47.209

49, 66.501, 46.690

78, 1.882, 47.496

46, 74.580, 46.370

82, 3.987, 228.449

45, 79.214, 45.957

87, 9.450, 228.961

91, 14.557,
229.550

95, 17.471,
206.737

96, 18.987,
198.251

Harmonies

Complementary

The Complementary color scheme is a pair of colors which are on the opposite of each other on the color wheel.



62, 30.369, 46.299



68, 22.728, 232.307

Rectangle

The Rectangle color scheme consists of four colors that form a rectangle on the color wheel.



62, 30.369, 46.299



62, 30.369, 96.299



62, 30.369, 226.299



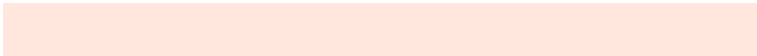
62, 30.369, 276.299

Sweetspot

The Sweet Spot groups the original color and five complimentary colors.



62, 30.368, 46.304



93, 10.014, 47.206



59, 46.099, 336.074



49, 7.069, 47.113



0, 0.000, 0.000



53, 0.007, 296.813

Same Dimension

The Same Dimension uses a secret algorithm to generate beautiful new colors.



62, 30.368, 46.304



74, 46.863, 46.251



73, 35.925, 93.078



40, 3.518, 47.361



37, 68.518, 46.386



5, 13.718, 35.901

Inverse Universe

The Inverse Universe completely reimagines the original color for something new.



68, 22.728, 232.307



83, 32.400, 234.112



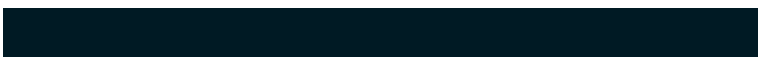
56, 37.510, 285.263



41, 3.336, 228.605



47, 33.488, 249.943



8, 11.205, 239.452

Previews

White Background



This preview shows how the CIELCh color 62, 30.369, 46.299 looks on a white background.

Color Contrast Check

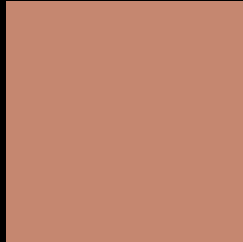
Large Text (above 18pt) WCAG AA × Fail

Any Text WCAG AA × Fail

Large Text (above 18pt) WCAG AAA × Fail

Any Text WCAG AAA × Fail

Black Background



This preview shows how the CIE LCh color 62, 30.369, 46.299 looks on a black background.

Color Contrast Check

Large Text (above 18pt) WCAG AA ✓ Pass

Any Text WCAG AA ✓ Pass

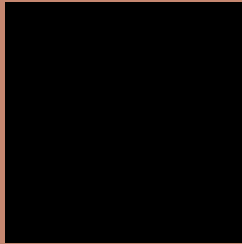
Large Text (above 18pt) WCAG AAA ✓ Pass

Any Text WCAG AAA ✓ Pass

If you want to check with other color combinations, try the [Color Contrast Checker](#).

CIELCh 62, 30.369, 46.299

Background



This preview shows how black text looks on a background with the CIELCh color 62, 30.369, 46.299.



This preview shows how white text looks on a background with the CIELCh color 62, 30.369, 46.299.

Color Blindness Simulation

Color vision deficiency is a very complex topic, and I could not describe the different causes any better than Wikipedia does, so if you want to learn more, you should check out their [article about color blindness](#).

Dichromacy





Tritanopia
62, 28.476, 11.441

Trichromacy



Original Color
62, 30.369, 46.299

Protanomaly
62, 20.283, 72.281

Deuteranomaly
62, 25.782, 60.550

Tritanomaly
62, 28.084, 24.584

Monochromacy



Original Color
62, 30.369, 46.299

Achromatopsia
62, 0.008, 296.813

Achromatomaly
62, 10.373, 45.572

CSS Examples

Text

The CSS property to change the color of the text to CIELCh 62, 30.369, 46.299 is called "color". The color property can be set on classes, ids or directly on the HTML element.

This example shows how text in the color `rgb(197, 135, 112)` looks like.

```
.text, #text, p{  
    color:rgb(197, 135, 112)  
}
```

If you want to add a text shadow in that color use the text-shadow property, you can generate a text shadow directly with our [CSS Text Shadow Generator](#).

Here you see how black text with a 4 pixel rgb(197, 135, 112) colored shadow looks like.

```
.shadow{ text-shadow: 4px 4px 2px rgb(197, 135, 112) }
```

Border

The CSS property to change the border of an element to CIELCh 62, 30.369, 46.299 is called "border". The border property can be set on classes, ids or directly on the HTML element.

This example shows the color as border, it can be applied via the CSS property "border" or "border-color".

```
.border, #border, table{ border:4px solid rgb(197, 135, 112) }
```

If only the border color should be changed use the property `border-color`.

```
.border{ border-color:rgb(197, 135, 112) }
```

If you want to add a box shadow in that color use:

Here you see how a box with a 4 pixel `rgb(197, 135, 112)` colored shadow looks like.

```
.boxshadow{ -moz-box-shadow:4px 4px 4px  
4px rgb(197, 135, 112); -webkit-box-  
shadow:4px 4px 4px 4px rgb(197, 135, 112);  
box-shadow:4px 4px 4px 4px rgb(197, 135,  
112) }
```

Background

The CSS property to change the background color of an element to CIELCh 62, 30.369, 46.299 is called "background". The background property can be set on classes, ids or directly on the HTML element.

```
.background, #background, body{  
background: rgb(197, 135, 112) }
```

If only the background color should be changed can be used:

```
.background{ background-color: rgb(197,  
135, 112) }
```

This example shows the color as background, it is applied via the CSS property "background".

To optimize and compress your CSS code, you can use our [online CSS compressor and optimizer](#) based on csstidy. If you want to create a linear or radial gradient as background or border, check our [CSS Gradient Generator](#).

Hey! You found this booklet interesting? Support Converting Colors with the new Membership Option!

The pro membership hides all ads, plus gives you double the colors in the color bucket, and more awesome pro features!

[Learn more, Memberships starting at \\$2.50/m!](#)

**Follow me
on Twitter!**

@ConvertingColor