

Converting Colors

CIELCh(62, 31.636, 60.522)

Have a look what the booklet for
CIELCh(62, 31.636, 60.522) contains.

CIELCh(62, 31.492, 61.003)	3
<i>Conversions</i>	4
<i>Details</i>	6
<i>Harmonies</i>	11
<i>Previews</i>	20
<i>Color Blindness Simulation</i>	23
<i>CSS Examples</i>	26

Color

CIELCh(62, 31.492, 61.003)

Conversions

Conversions Part 1

Format	Color
Hex	BF8B66
RGB	191, 139, 102
RGB Percent	75%, 55%, 40%
CMY	0.2519, 0.4557, 0.6008
CMYK	0.00, 0.27, 0.47, 0.25
HSL	25°, 41%, 57%
HSV	25°, 47%, 75%
XYZ	33.0145, 30.4025, 16.6445
YIQ	150.3300, 42.8690, -0.4830

Conversions

Conversions Part 2

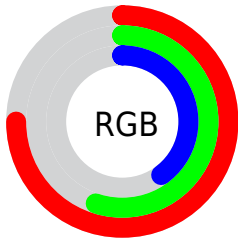
Format	Color
RYB	191, 165, 102
Decimal	12553062
CIELab	62.00, 15.27, 27.54
CIElCh	62, 31.492, 61.003
Yxy	30.4025, 0.4124, 0.3797
Android (android.graphics.Color)	4290743142 (0xFFBF8B66)
YUV	150.3300, -23.8267, 35.6676
Hunter-Lab	55.1385, 10.3855, 20.6992

Details

The CIELCh color **62, 31.492, 61.003** is a dark color, and the websafe version is hex **CC9966**. A complement of this color would be **61, 25.542, 253.659**, and the grayscale version is **62, 0.008, 296.813**.

A 20% lighter version of the original color is **82, 31.591, 61.824**, and **42, 31.599, 61.489** is the 20% darker color. If you saturate the color by 10%, you get **59, 39.390, 60.059**, and if you desaturate by 10%, it is **65, 23.987, 61.985**.

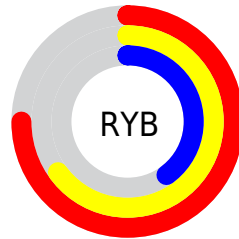
Distribution



Red (75%)

Green (55%)

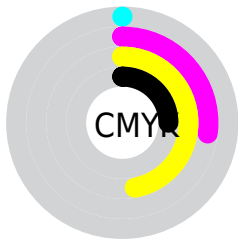
Blue (40%)



Red (75%)

Yellow (65%)

Blue (40%)

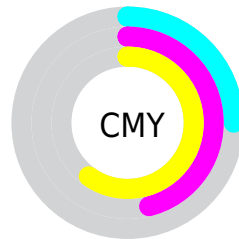


Cyan (0%)

Magenta (27%)

Yellow (47%)

Black (25%)



Cyan (25%)

Magenta (46%)

Yellow (60%)

Brightness & Saturation Gradients

These gradients show how the CIELCh color 62, 31.492, 61.003 changes by changing the brightness by 10 percent. The first figure shows a shift by +10% for each color and the second figure -10%.

Similar to the brightness gradients but the following saturation gradients show a change of the CIELCh color 62, 31.492, 61.003 by changing the saturation by 10% instead.

62, 31.492, 61.003

62, 31.492, 61.003

100, 31.492,
61.003

52, 31.492, 61.003

82, 31.492, 61.003

42, 31.492, 61.003

92, 31.492, 61.003

32, 31.492, 61.003

22, 31.492, 61.003

12, 31.492, 61.003

2, 31.492, 61.003

0, 31.492, 61.003

62, 31.492, 61.003

62, 31.492, 61.003

59, 39.390, 60.059

65, 23.987, 61.985

56, 47.570, 59.107

68, 16.906, 62.990

53, 55.756, 58.065

72, 10.241, 64.010

51, 63.364, 56.724

75, 3.964, 64.996

49, 69.449, 54.735

78, 1.961, 246.365

48, 71.392, 54.117

82, 7.571, 247.249

85, 12.903,
248.251

89, 17.989,
249.241

92, 17.451,
226.877

Harmonies

Complementary

The Complementary color scheme is a pair of colors which are on the opposite of each other on the color wheel.



62, 31.492, 61.003



61, 25.542, 253.659

Rectangle

The Rectangle color scheme consists of four colors that form a rectangle on the color wheel.



62, 31.492, 61.003



62, 31.492, 111.003



62, 31.492, 241.003



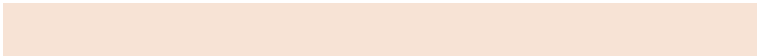
62, 31.492, 291.003

Sweetspot

The Sweet Spot groups the original color and five complimentary colors.



62, 31.491, 61.008



92, 10.564, 64.256



55, 44.324, 342.795



48, 7.402, 64.034



99, 0.012, 296.813



52, 0.007, 296.813

Same Dimension

The Same Dimension uses a secret algorithm to generate beautiful new colors.



62, 31.491, 61.008



75, 48.129, 60.035



73, 42.431, 100.863



38, 3.382, 64.742



40, 61.861, 54.684



5, 10.053, 50.658

Inverse Universe

The Inverse Universe completely reimagines the original color for something new.



61, 25.542, 253.659



74, 37.035, 256.530



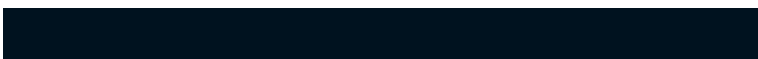
49, 46.873, 292.812



38, 3.269, 246.941



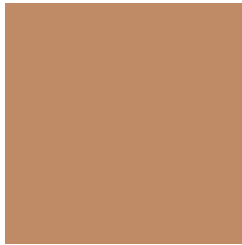
38, 42.142, 273.830



5, 10.625, 260.451

Previews

White Background



This preview shows how the CIELCh color 62, 31.492, 61.003 looks on a white background.

Color Contrast Check

Large Text (above 18pt) WCAG AA × Fail

Any Text WCAG AA × Fail

Large Text (above 18pt) WCAG AAA × Fail

Any Text WCAG AAA × Fail

Black Background



This preview shows how the CIELCh color 62, 31.492, 61.003 looks on a black background.

Color Contrast Check

Large Text (above 18pt) WCAG AA ✓ Pass

Any Text WCAG AA ✓ Pass

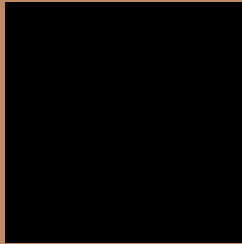
Large Text (above 18pt) WCAG AAA ✓ Pass

Any Text WCAG AAA ✓ Pass

If you want to check with other color combinations, try the [Color Contrast Checker](#).

CIELCh 62, 31.492, 61.003

Background



This preview shows how black text looks on a background with the CIELCh color 62, 31.492, 61.003.



This preview shows how white text looks on a background with the CIELCh color 62, 31.492, 61.003.

Color Blindness Simulation

Color vision deficiency is a very complex topic, and I could not describe the different causes any better than Wikipedia does, so if you want to learn more, you should check out their [article about color blindness](#).

Dichromacy



Original Color

62, 31.492, 61.003

Protanopia

62, 24.961, 95.499

Deuteranopia

62, 29.040, 74.391



Tritanopia
62, 25.183, 9.513

Trichromacy



Original Color
62, 31.492, 61.003

Protanomaly
62, 26.145, 81.847

Deuteranomaly
62, 29.864, 69.225

Tritanomaly
62, 24.790, 30.765

Monochromacy



Original Color
62, 31.492, 61.003

Achromatopsia
62, 0.008, 296.813

Achromatomaly
62, 11.070, 64.647

CSS Examples

Text

The CSS property to change the color of the text to CIELCh 62, 31.492, 61.003 is called "color". The color property can be set on classes, ids or directly on the HTML element.

This example shows how text in the color `rgb(191, 139, 102)` looks like.

```
.text, #text, p{  
    color:rgb(191, 139, 102)  
}
```

If you want to add a text shadow in that color use the text-shadow property, you can generate a text shadow directly with our [CSS Text Shadow Generator](#).

Here you see how black text with a 4 pixel rgb(191, 139, 102) colored shadow looks like.

```
.shadow{ text-shadow: 4px 4px 2px rgb(191, 139, 102) }
```

Border

The CSS property to change the border of an element to CIELCh 62, 31.492, 61.003 is called "border". The border property can be set on classes, ids or directly on the HTML element.

This example shows the color as border, it can be applied via the CSS property "border" or "border-color".

```
.border, #border, table{ border:4px solid rgb(191, 139, 102) }
```

If only the border color should be changed use the property `border-color`.

```
.border{ border-color:rgb(191, 139, 102) }
```

If you want to add a box shadow in that color use:

Here you see how a box with a 4 pixel `rgb(191, 139, 102)` colored shadow looks like.

```
.boxshadow{ -moz-box-shadow:4px 4px 4px  
4px rgb(191, 139, 102); -webkit-box-  
shadow:4px 4px 4px 4px rgb(191, 139, 102);  
box-shadow:4px 4px 4px 4px rgb(191, 139,  
102) }
```

Background

The CSS property to change the background color of an element to CIELCh 62, 31.492, 61.003 is called "background". The background property can be set on classes, ids or directly on the HTML element.

```
.background, #background, body{  
background: rgb(191, 139, 102) }
```

If only the background color should be changed can be used:

```
.background{ background-color: rgb(191,  
139, 102) }
```

This example shows the color as background, it is applied via the CSS property "background".

To optimize and compress your CSS code, you can use our [online CSS compressor and optimizer](#) based on csstidy. If you want to create a linear or radial gradient as background or border, check our [CSS Gradient Generator](#).

Hey! You found this booklet interesting? Support Converting Colors with the new Membership Option!

The pro membership hides all ads, plus gives you double the colors in the color bucket, and more awesome pro features!

[Learn more, Memberships starting at \\$2.50/m!](#)

**Follow me
on Twitter!**

@ConvertingColor