

Converting Colors

CIELCh(62, 35.309, 58.407)

Have a look what the booklet for
CIELCh(62, 35.309, 58.407) contains.

CIELCh(62, 35.309, 58.407)	3
<i>Conversions</i>	4
<i>Details</i>	6
<i>Harmonies</i>	11
<i>Previews</i>	20
<i>Color Blindness Simulation</i>	23
<i>CSS Examples</i>	26

Color

CIELCh(62, 35.309, 58.407)

Conversions

Conversions Part 1

Format	Color
Hex	C48861
RGB	196, 136, 97
RGB Percent	77%, 53%, 38%
CMY	0.2295, 0.4649, 0.6180
CMYK	0.00, 0.31, 0.50, 0.23
HSL	24°, 46%, 58%
HSV	24°, 50%, 77%
XYZ	33.9335, 30.4025, 15.4902
YIQ	149.4940, 48.2790, 0.5910

Conversions

Conversions Part 2

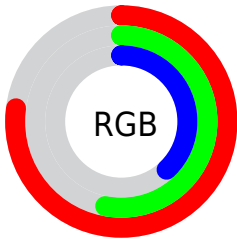
Format	Color
RYB	196, 161, 97
Decimal	12879969
CIELab	62.00, 18.50, 30.08
CIELCh	62, 35.309, 58.407
Yxy	30.4025, 0.4251, 0.3809
Android (android.graphics.Color)	4291070049 (0xFFC48861)
YUV	149.4940, -25.8795, 40.7858
Hunter-Lab	55.1385, 13.3607, 21.9404

Details

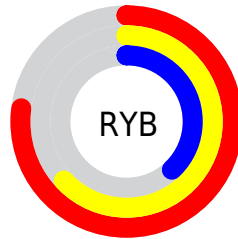
The CIELCh color **62, 35.309, 58.407** is a dark color, and the websafe version is hex **CC9966**. A complement of this color would be **62, 27.482, 251.732**, and the grayscale version is **62, 0.008, 296.813**.

A 20% lighter version of the original color is **82, 35.404, 58.932**, and **42, 34.988, 58.434** is the 20% darker color. If you saturate the color by 10%, you get **59, 43.621, 57.588**, and if you desaturate by 10%, it is **65, 27.402, 59.272**.

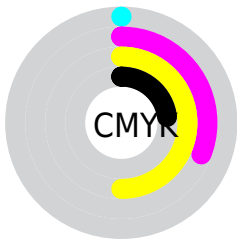
Distribution



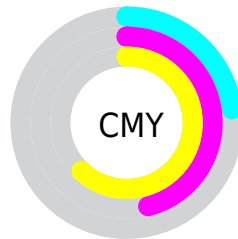
- Red (77%)
- Green (53%)
- Blue (38%)



- Red (77%)
- Yellow (63%)
- Blue (38%)



- Cyan (0%)
- Magenta (31%)
- Yellow (50%)
- Black (23%)



- Cyan (23%)
- Magenta (46%)
- Yellow (62%)

Brightness & Saturation Gradients

These gradients show how the CIELCh color 62, 35.309, 58.407 changes by changing the brightness by 10 percent. The first figure shows a shift by +10% for each color and the second figure -10%.

Similar to the brightness gradients but the following saturation gradients show a change of the CIELCh color 62, 35.309, 58.407 by changing the saturation by 10% instead.

62, 35.309, 58.407

62, 35.309, 58.407

100, 35.309,
58.407

52, 35.309, 58.407

82, 35.309, 58.407

42, 35.309, 58.407

92, 35.309, 58.407

32, 35.309, 58.407

22, 35.309, 58.407

12, 35.309, 58.407

2, 35.309, 58.407

0, 35.309, 58.407

62, 35.309, 58.407

62, 35.309, 58.407

59, 43.621, 57.588

65, 27.402, 59.272

56, 52.181, 56.756

69, 19.954, 60.176

53, 60.608, 55.787

72, 12.965, 61.115

51, 68.127, 54.397

76, 6.408, 62.058

48, 73.902, 52.573

79, 0.246, 61.321

83, 5.562, 244.194

86, 11.056,
245.141

90, 16.274,
246.098

93, 16.322,
219.727

Harmonies

Complementary

The Complementary color scheme is a pair of colors which are on the opposite of each other on the color wheel.



62, 35.309, 58.407



62, 27.482, 251.732

Rectangle

The Rectangle color scheme consists of four colors that form a rectangle on the color wheel.



62, 35.309, 58.407



62, 35.309, 108.407



62, 35.309, 238.407



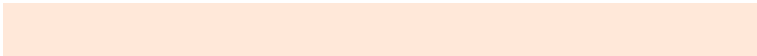
62, 35.309, 288.407

Sweetspot

The Sweet Spot groups the original color and five complimentary colors.



62, 35.308, 58.412



93, 11.573, 61.607



55, 49.262, 342.357



49, 7.950, 61.404



0, 0.000, 0.000



53, 0.007, 296.813

Same Dimension

The Same Dimension uses a secret algorithm to generate beautiful new colors.



62, 35.308, 58.412



75, 54.656, 57.464



74, 46.109, 99.528



40, 3.510, 62.152



40, 64.111, 53.106



6, 13.140, 45.939

Inverse Universe

The Inverse Universe completely reimagines the original color for something new.



62, 27.482, 251.732



75, 39.845, 255.180



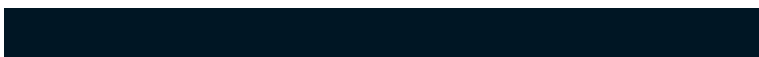
49, 51.271, 292.914



40, 3.380, 244.259



41, 41.378, 270.982



6, 12.400, 259.004

Previews

White Background



This preview shows how the CIELCh color 62, 35.309, 58.407 looks on a white background.

Color Contrast Check

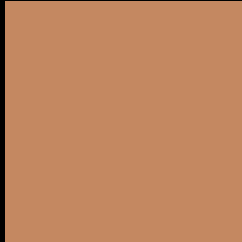
Large Text (above 18pt) WCAG AA × Fail

Any Text WCAG AA × Fail

Large Text (above 18pt) WCAG AAA × Fail

Any Text WCAG AAA × Fail

Black Background



This preview shows how the CIELCh color 62, 35.309, 58.407 looks on a black background.

Color Contrast Check

Large Text (above 18pt) WCAG AA ✓ Pass

Any Text WCAG AA ✓ Pass

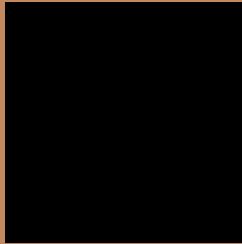
Large Text (above 18pt) WCAG AAA ✓ Pass

Any Text WCAG AAA ✓ Pass

If you want to check with other color combinations, try the [Color Contrast Checker](#).

CIELCh 62, 35.309, 58.407

Background



This preview shows how black text looks on a background with the CIELCh color 62, 35.309, 58.407.



This preview shows how white text looks on a background with the CIELCh color 62, 35.309, 58.407.

Color Blindness Simulation

Color vision deficiency is a very complex topic, and I could not describe the different causes any better than Wikipedia does, so if you want to learn more, you should check out their [article about color blindness](#).

Dichromacy





Tritanopia
62, 28.476, 11.441

Trichromacy



Original Color
62, 35.309, 58.407

Protanomaly
62, 28.035, 79.378

Deuteranomaly
62, 32.468, 68.330

Tritanomaly
62, 28.459, 31.085

Monochromacy



Original Color
62, 35.309, 58.407

Achromatopsia
62, 0.008, 296.813

Achromatomaly
62, 12.014, 60.453

CSS Examples

Text

The CSS property to change the color of the text to CIELCh 62, 35.309, 58.407 is called "color". The color property can be set on classes, ids or directly on the HTML element.

This example shows how text in the color `rgb(196, 136, 97)` looks like.

```
.text, #text, p{  
    color:rgb(196, 136, 97)  
}
```

If you want to add a text shadow in that color use the text-shadow property, you can generate a text shadow directly with our [CSS Text Shadow Generator](#).

Here you see how black text with a 4 pixel rgb(196, 136, 97) colored shadow looks like.

```
.shadow{ text-shadow: 4px 4px 2px rgb(196, 136, 97) }
```

Border

The CSS property to change the border of an element to CIELCh 62, 35.309, 58.407 is called "border". The border property can be set on classes, ids or directly on the HTML element.

This example shows the color as border, it can be applied via the CSS property "border" or "border-color".

```
.border, #border, table{ border:4px solid rgb(196, 136, 97) }
```

If only the border color should be changed use the property border-color.

```
.border{ border-color:rgb(196, 136, 97) }
```

If you want to add a box shadow in that color use:

Here you see how a box with a 4 pixel rgb(196, 136, 97) colored shadow looks like.

```
.boxshadow{ -moz-box-shadow:4px 4px 4px  
4px rgb(196, 136, 97); -webkit-box-  
shadow:4px 4px 4px 4px rgb(196, 136, 97);  
box-shadow:4px 4px 4px 4px rgb(196, 136,  
97) }
```

Background

The CSS property to change the background color of an element to CIELCh 62, 35.309, 58.407 is called "background". The background property can be set on classes, ids or directly on the HTML element.

```
.background, #background, body{  
background: rgb(196, 136, 97) }
```

If only the background color should be changed can be used:

```
.background{ background-color: rgb(196,  
136, 97) }
```

This example shows the color as background, it is applied via the CSS property "background".

To optimize and compress your CSS code, you can use our [online CSS compressor and optimizer](#) based on csstidy. If you want to create a linear or radial gradient as background or border, check our [CSS Gradient Generator](#).

Hey! You found this booklet interesting? Support Converting Colors with the new Membership Option!

The pro membership hides all ads, plus gives you double the colors in the color bucket, and more awesome pro features!

[Learn more, Memberships starting at \\$2.50/m!](#)

**Follow me
on Twitter!**

@ConvertingColor