

# Converting Colors

CIELCh(62, 49.916, 8.398)

Have a look what the booklet for  
CIELCh(62, 49.916, 8.398) contains.

<b>CIELCh(62, 50.060, 8.374)</b> .....	3
<i><b>Conversions</b></i> .....	4
<i><b>Details</b></i> .....	6
<i><b>Harmonies</b></i> .....	11
<i><b>Previews</b></i> .....	20
<i><b>Color Blindness Simulation</b></i> .....	23
<i><b>CSS Examples</b></i> .....	26

# Color

**CIELCh(62, 50.060, 8.374)**

# Conversions

## Conversions Part 1

Format	Color
Hex	E86F8B
RGB	232, 111, 139
RGB Percent	91%, 44%, 55%
CMY	0.0901, 0.5646, 0.4548
CMYK	0.00, 0.52, 0.40, 0.09
HSL	346°, 72%, 67%
HSV	346°, 52%, 91%
XYZ	43.6405, 30.4025, 28.0061
YIQ	150.3710, 63.1280, 34.3600

# Conversions

## Conversions Part 2

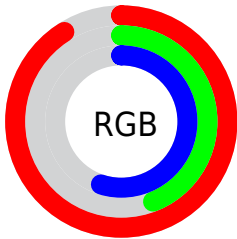
<b>Format</b>	<b>Color</b>
<b>R<sub>YB</sub></b>	232, 111, 139
Decimal	15232907
CIE <sub>Lab</sub>	62.00, 49.53, 7.29
CIE <sub>LCh</sub>	62, 50.060, 8.374
Yxy	30.4025, 0.4276, 0.2979
Android (android.graphics.Color)	4293422987 (0xFFE86F8B)
YUV	150.3710, -5.6059, 71.5886
Hunter-Lab	55.1385, 44.7850, 8.4822

# Details

The CIELCh color **62, 50.060, 8.374** is a light color, and the websafe version is hex **FF6699**. A complement of this color would be **85, 40.803, 175.414**, and the grayscale version is **62, 0.008, 296.813**.

A 20% lighter version of the original color is **77, 36.195, 0.613**, and **42, 50.209, 8.630** is the 20% darker color. If you saturate the color by 10%, you get **58, 59.441, 11.015**, and if you desaturate by 10%, it is **67, 40.193, 6.283**.

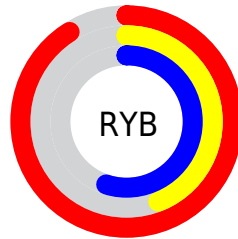
# Distribution



Red (91%)

Green (44%)

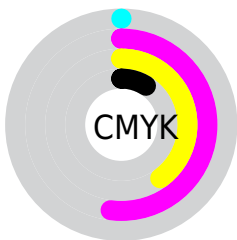
Blue (55%)



Red (91%)

Yellow (44%)

Blue (55%)

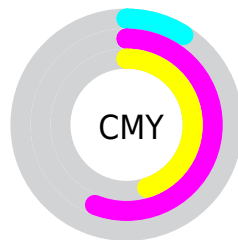


Cyan (0%)

Magenta (52%)

Yellow (40%)

Black (9%)



Cyan (9%)

Magenta (56%)

Yellow (45%)

# Brightness & Saturation Gradients

These gradients show how the CIELCh color 62, 50.060, 8.374 changes by changing the brightness by 10 percent. The first figure shows a shift by +10% for each color and the second figure -10%.

Similar to the brightness gradients but the following saturation gradients show a change of the CIELCh color 62, 50.060, 8.374 by changing the saturation by 10% instead.



 62, 50.060, 8.374       62, 50.060, 8.374

 100, 50.060, 8.374       52, 50.060, 8.374

 82, 50.060, 8.374       42, 50.060, 8.374


 92, 50.060, 8.374       32, 50.060, 8.374

 22, 50.060, 8.374

 12, 50.060, 8.374

 2, 50.060, 8.374

 0, 50.060, 8.374

 62, 50.060, 8.374       62, 50.060, 8.374

 58, 59.441, 11.015       67, 40.193, 6.283

■ 54, 67.930, 14.361

■ 73, 30.220, 4.595

■ 51, 75.209, 18.559

■ 78, 20.413, 3.204

■ 50, 81.234, 23.619

■ 84, 10.940, 2.023

■ 49, 85.414, 27.902

■ 91, 1.888, 0.791

■ 97, 6.710, 180.315

■ 98, 7.844, 198.994

# Harmonies

# Complementary

The Complementary color scheme is a pair of colors which are on the opposite of each other on the color wheel.



62, 50.060, 8.374



85, 40.803, 175.414

# Rectangle

The Rectangle color scheme consists of four colors that form a rectangle on the color wheel.



62, 50.060, 8.374



62, 50.060, 58.374



62, 50.060, 188.374



62, 50.060, 238.374

# Sweetspot

The Sweet Spot groups the original color and five complimentary colors.



62, 50.057, 8.376



89, 15.704, 2.469



62, 72.137, 319.967



46, 10.654, 2.712



0, 0.000, 0.000



53, 0.007, 296.813



# Same Dimension

The Same Dimension uses a secret algorithm to generate beautiful new colors.



62, 50.057, 8.376



62, 64.973, 11.369



68, 43.588, 45.885



45, 5.037, 1.727



37, 69.619, 26.853



7, 26.646, 12.015





# Inverse Universe

The Inverse Universe completely reimagines the original color for something new.



62, 50.057, 8.376



62, 64.973, 11.369



76, 30.094, 233.473



45, 5.037, 1.727



37, 69.619, 26.853



7, 26.646, 12.015



# Previews

## White Background



This preview shows how the CIELCh color 62, 50.060, 8.374 looks on a white background.

## Color Contrast Check

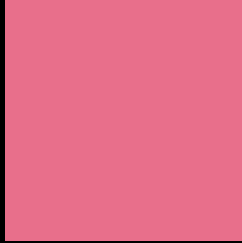
Large Text (above 18pt) WCAG AA × Fail

Any Text WCAG AA × Fail

Large Text (above 18pt) WCAG AAA × Fail

Any Text WCAG AAA × Fail

# Black Background



This preview shows how the CIE LCh color 62, 50.060, 8.374 looks on a black background.

## Color Contrast Check

Large Text (above 18pt) WCAG AA ✓ Pass

Any Text WCAG AA ✓ Pass

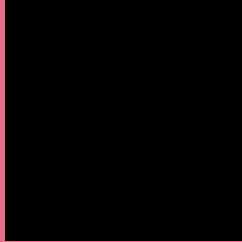
Large Text (above 18pt) WCAG AAA ✓ Pass

Any Text WCAG AAA ✓ Pass

If you want to check with other color combinations, try the [Color Contrast Checker](#).

# CIELCh 62, 50.060, 8.374

## Background



This preview shows how black text looks on a background with the CIELCh color 62, 50.060, 8.374.

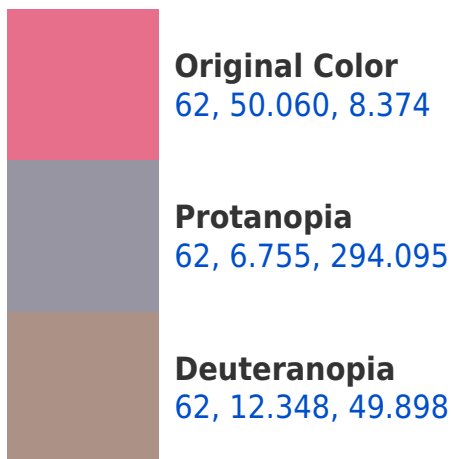


This preview shows how white text looks on a background with the CIELCh color 62, 50.060, 8.374.

# Color Blindness Simulation

Color vision deficiency is a very complex topic, and I could not describe the different causes any better than Wikipedia does, so if you want to learn more, you should check out their [article about color blindness](#).

## Dichromacy

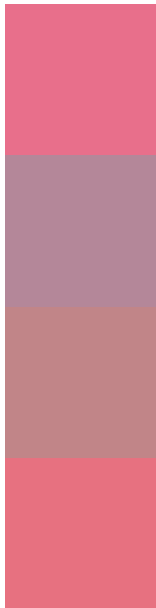




**Tritanopia**  
62, 49.064, 20.371



# Trichromacy



**Original Color**  
62, 50.060, 8.374

**Protanomaly**  
61, 20.251, 351.869

**Deuteranomaly**  
62, 24.710, 18.210

**Tritanomaly**  
62, 48.982, 16.067

# Monochromacy



**Original Color**  
62, 50.060, 8.374

**Achromatopsia**  
62, 0.008, 296.813

**Achromatomaly**  
61, 18.382, 3.752

# CSS Examples

## Text

The CSS property to change the color of the text to CIELCh 62, 50.060, 8.374 is called "color". The color property can be set on classes, ids or directly on the HTML element.

This example shows how text in the color `rgb(232, 111, 139)` looks like.

```
.text, #text, p{  
    color:rgb(232, 111, 139)  
}
```

If you want to add a text shadow in that color use the text-shadow property, you can generate a text shadow directly with our [CSS Text Shadow Generator](#).

Here you see how black text with a 4 pixel rgb(232, 111, 139) colored shadow looks like.

```
.shadow{ text-shadow: 4px 4px 2px rgb(232, 111, 139) }
```

## Border

The CSS property to change the border of an element to CIELCh 62, 50.060, 8.374 is called "border". The border property can be set on classes, ids or directly on the HTML element.

This example shows the color as border, it can be applied via the CSS property "border" or "border-color".

```
.border, #border, table{ border:4px solid rgb(232, 111, 139) }
```

If only the border color should be changed use the property `border-color`.

```
.border{ border-color:rgb(232, 111, 139) }
```

If you want to add a box shadow in that color use:

Here you see how a box with a 4 pixel `rgb(232, 111, 139)` colored shadow looks like.

```
.boxshadow{ -moz-box-shadow:4px 4px 4px 4px rgb(232, 111, 139); -webkit-box-shadow:4px 4px 4px 4px rgb(232, 111, 139); box-shadow:4px 4px 4px 4px rgb(232, 111, 139) }
```

# Background

The CSS property to change the background color of an element to CIELCh 62, 50.060, 8.374 is called "background". The background property can be set on classes, ids or directly on the HTML element.

```
.background, #background, body{  
background: rgb(232, 111, 139) }
```

If only the background color should be changed can be used:

```
.background{ background-color: rgb(232,  
111, 139) }
```

This example shows the color as background, it is applied via the CSS property "background".

To optimize and compress your CSS code, you can use our [online CSS compressor and optimizer](#) based on csstidy. If you want to create a linear or radial gradient as background or border, check our [CSS Gradient Generator](#).

Hey! You found this booklet interesting? Support Converting Colors with the new Membership Option!

The pro membership hides all ads, plus gives you double the colors in the color bucket, and more awesome pro features!

**[Learn more, Memberships starting at \\$2.50/m!](#)**

**Follow me  
on Twitter!**

@ConvertingColor