

Converting Colors

CIELCh(62, 55.539, 16.368)

Have a look what the booklet for
CIELCh(62, 55.539, 16.368) contains.

CIELCh(62, 55.404, 16.167)	3
<i>Conversions</i>	4
<i>Details</i>	6
<i>Harmonies</i>	11
<i>Previews</i>	20
<i>Color Blindness Simulation</i>	23
<i>CSS Examples</i>	26

Color

CIELCh(62, 55.404, 16.167)

Conversions

Conversions Part 1

Format	Color
Hex	F06A7D
RGB	240, 106, 125
RGB Percent	94%, 42%, 49%
CMY	0.0579, 0.5835, 0.5090
CMYK	0.00, 0.56, 0.48, 0.06
HSL	352°, 82%, 68%
HSV	352°, 56%, 94%
XYZ	44.9038, 30.4025, 22.9681
YIQ	148.2320, 73.7650, 34.3170

Conversions

Conversions Part 2

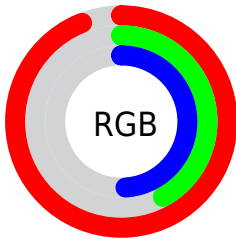
Format	Color
R _Y B	240, 106, 125
Decimal	15755901
CIE Lab	62.00, 53.21, 15.43
CIE LCh	62, 55.404, 16.167
Yxy	30.4025, 0.4569, 0.3094
Android (android.graphics.Color)	4293945981 (0xFFFF06A7D)
YUV	148.2320, -11.4534, 80.4805
Hunter-Lab	55.1385, 48.8747, 13.8995

Details

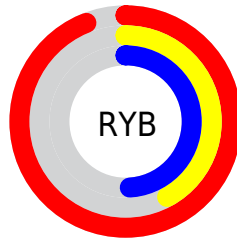
The CIELCh color **62, 55.404, 16.167** is a light color, and the websafe version is hex **CC6666**. A complement of this color would be **87, 41.229, 182.692**, and the grayscale version is **62, 0.008, 296.813**.

A 20% lighter version of the original color is **76, 37.364, 9.986**, and **42, 55.415, 16.258** is the 20% darker color. If you saturate the color by 10%, you get **58, 65.526, 19.157**, and if you desaturate by 10%, it is **67, 44.906, 13.820**.

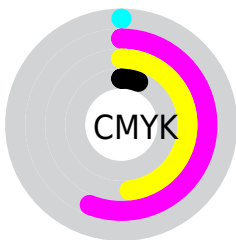
Distribution



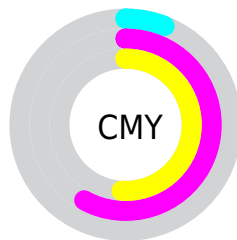
- Red (94%)
- Green (42%)
- Blue (49%)



- Red (94%)
- Yellow (42%)
- Blue (49%)



- Cyan (0%)
- Magenta (56%)
- Yellow (48%)
- Black (6%)



- Cyan (6%)
- Magenta (58%)
- Yellow (51%)

Brightness & Saturation Gradients

These gradients show how the CIELCh color 62, 55.404, 16.167 changes by changing the brightness by 10 percent. The first figure shows a shift by +10% for each color and the second figure -10%.

Similar to the brightness gradients but the following saturation gradients show a change of the CIELCh color 62, 55.404, 16.167 by changing the saturation by 10% instead.

62, 55.404, 16.167

62, 55.404, 16.167

100, 55.404,
16.167

52, 55.404, 16.167

82, 55.404, 16.167

42, 55.404, 16.167

92, 55.404, 16.167

32, 55.404, 16.167

22, 55.404, 16.167

12, 55.404, 16.167

2, 55.404, 16.167

0, 55.404, 16.167

62, 55.404, 16.167

62, 55.404, 16.167

58, 65.526, 19.157

67, 44.906, 13.820

54, 74.906, 22.908

73, 34.405, 11.965

52, 83.272, 27.425

79, 24.173, 10.478

51, 90.457, 32.395

85, 14.382, 9.259

50, 93.187, 34.339

91, 5.115, 8.189

98, 3.604, 187.637

99, 5.084, 199.213

Harmonies

Complementary

The Complementary color scheme is a pair of colors which are on the opposite of each other on the color wheel.



62, 55.404, 16.167



87, 41.229, 182.692

Rectangle

The Rectangle color scheme consists of four colors that form a rectangle on the color wheel.



62, 55.404, 16.167



62, 55.404, 66.167



62, 55.404, 196.167



62, 55.404, 246.167

Sweetspot

The Sweet Spot groups the original color and five complimentary colors.



62, 55.401, 16.170



89, 16.316, 9.402



63, 79.657, 322.665



46, 10.978, 9.636



0, 0.000, 0.000



53, 0.007, 296.813

Same Dimension

The Same Dimension uses a secret algorithm to generate beautiful new colors.



62, 55.401, 16.170



61, 70.011, 19.644



71, 47.240, 53.646



47, 5.070, 8.582



38, 75.455, 33.455



8, 29.189, 18.034

Inverse Universe

The Inverse Universe completely reimagines the original color for something new.



62, 55.401, 16.170



61, 70.011, 19.644



75, 33.897, 247.130



47, 5.070, 8.582



38, 75.455, 33.455



8, 29.189, 18.034

Previews

White Background



This preview shows how the CIELCh color 62, 55.404, 16.167 looks on a white background.

Color Contrast Check

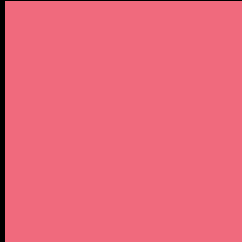
Large Text (above 18pt) WCAG AA × Fail

Any Text WCAG AA × Fail

Large Text (above 18pt) WCAG AAA × Fail

Any Text WCAG AAA × Fail

Black Background



This preview shows how the CIELCh color 62, 55.404, 16.167 looks on a black background.

Color Contrast Check

Large Text (above 18pt) WCAG AA ✓ Pass

Any Text WCAG AA ✓ Pass

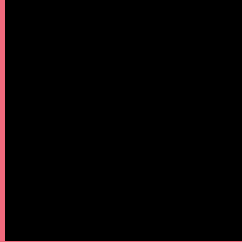
Large Text (above 18pt) WCAG AAA ✓ Pass

Any Text WCAG AAA ✓ Pass

If you want to check with other color combinations, try the [Color Contrast Checker](#).

CIELCh 62, 55.404, 16.167

Background



This preview shows how black text looks on a background with the CIELCh color 62, 55.404, 16.167.

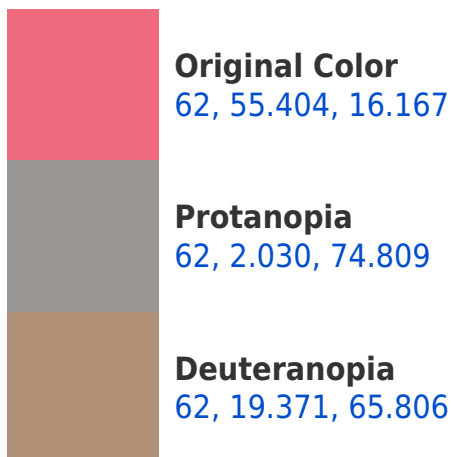


This preview shows how white text looks on a background with the CIELCh color 62, 55.404, 16.167.

Color Blindness Simulation

Color vision deficiency is a very complex topic, and I could not describe the different causes any better than Wikipedia does, so if you want to learn more, you should check out their [article about color blindness](#).

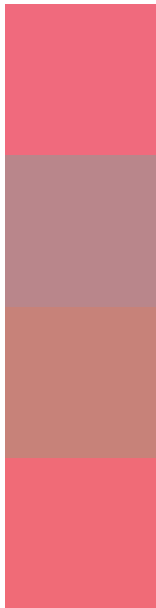
Dichromacy





Tritanopia
62, 55.676, 22.568

Trichromacy



Original Color
62, 55.404, 16.167

Protanomaly
61, 20.906, 14.023

Deuteranomaly
61, 30.068, 31.864

Tritanomaly
62, 55.548, 19.939

Monochromacy



Original Color
62, 55.404, 16.167

Achromatopsia
61, 0.008, 296.813

Achromatomaly
60, 20.181, 10.472

CSS Examples

Text

The CSS property to change the color of the text to CIELCh 62, 55.404, 16.167 is called "color". The color property can be set on classes, ids or directly on the HTML element.

This example shows how text in the color `rgb(240, 106, 125)` looks like.

```
.text, #text, p{  
    color:rgb(240, 106, 125)  
}
```

If you want to add a text shadow in that color use the text-shadow property, you can generate a text shadow directly with our [CSS Text Shadow Generator](#).

Here you see how black text with a 4 pixel rgb(240, 106, 125) colored shadow looks like.

```
.shadow{ text-shadow: 4px 4px 2px rgb(240, 106, 125) }
```

Border

The CSS property to change the border of an element to CIELCh 62, 55.404, 16.167 is called "border". The border property can be set on classes, ids or directly on the HTML element.

This example shows the color as border, it can be applied via the CSS property "border" or "border-color".

```
.border, #border, table{ border:4px solid rgb(240, 106, 125) }
```

If only the border color should be changed use the property `border-color`.

```
.border{ border-color:rgb(240, 106, 125) }
```

If you want to add a box shadow in that color use:

Here you see how a box with a 4 pixel `rgb(240, 106, 125)` colored shadow looks like.

```
.boxshadow{ -moz-box-shadow:4px 4px 4px  
4px rgb(240, 106, 125); -webkit-box-  
shadow:4px 4px 4px 4px rgb(240, 106, 125);  
box-shadow:4px 4px 4px 4px rgb(240, 106,  
125) }
```

Background

The CSS property to change the background color of an element to CIELCh 62, 55.404, 16.167 is called "background". The background property can be set on classes, ids or directly on the HTML element.

```
.background, #background, body{  
background: rgb(240, 106, 125) }
```

If only the background color should be changed can be used:

```
.background{ background-color: rgb(240,  
106, 125) }
```

This example shows the color as background, it is applied via the CSS property "background".

To optimize and compress your CSS code, you can use our [online CSS compressor and optimizer](#) based on csstidy. If you want to create a linear or radial gradient as background or border, check our [CSS Gradient Generator](#).

Hey! You found this booklet interesting? Support Converting Colors with the new Membership Option!

The pro membership hides all ads, plus gives you double the colors in the color bucket, and more awesome pro features!

[Learn more, Memberships starting at \\$2.50/m!](#)

**Follow me
on Twitter!**

@ConvertingColor