

Converting Colors

CIELCh(62, 60.823, 2.757)

Have a look what the booklet for
CIELCh(62, 60.823, 2.757) contains.

CIELCh(62, 60.923, 2.827)	3
<i>Conversions</i>	4
<i>Details</i>	6
<i>Harmonies</i>	11
<i>Previews</i>	20
<i>Color Blindness Simulation</i>	23
<i>CSS Examples</i>	26

Color

CIELCh(62, 60.923, 2.827)

Conversions

Conversions Part 1

Format	Color
Hex	F66293
RGB	246, 98, 147
RGB Percent	96%, 38%, 58%
CMY	0.0356, 0.6160, 0.4238
CMYK	0.00, 0.60, 0.40, 0.04
HSL	340°, 89%, 67%
HSV	340°, 60%, 96%
XYZ	47.5974, 30.4025, 30.9335
YIQ	147.8380, 72.4790, 46.6150

Conversions

Conversions Part 2

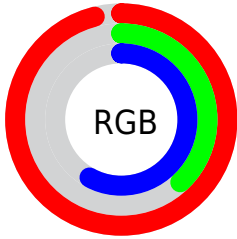
Format	Color
R _Y B	246, 98, 147
Decimal	16147091
CIE Lab	62.00, 60.85, 3.00
CIE LCh	62, 60.923, 2.827
Yxy	30.4025, 0.4369, 0.2791
Android (android.graphics.Color)	4294337171 (0xFF66293)
YUV	147.8380, -0.4131, 86.0881
Hunter-Lab	55.1385, 57.5947, 5.3344

Details

The CIELCh color **62, 60.923, 2.827** is a light color, and the websafe version is hex **FF6699**. A complement of this color would be **88, 52.261, 166.819**, and the grayscale version is **61, 0.008, 296.813**.

A 20% lighter version of the original color is **75, 43.804, 350.003**, and **42, 60.853, 2.589** is the 20% darker color. If you saturate the color by 10%, you get **58, 69.254, 5.729**, and if you desaturate by 10%, it is **67, 51.389, 0.534**.

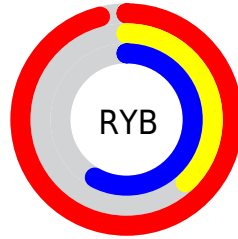
Distribution



Red (96%)

Green (38%)

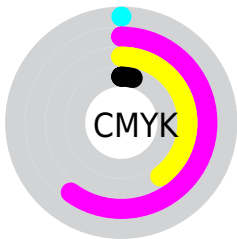
Blue (58%)



Red (96%)

Yellow (38%)

Blue (58%)

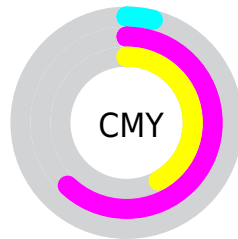


Cyan (0%)

Magenta (60%)

Yellow (40%)

Black (4%)



Cyan (4%)

Magenta (62%)

Yellow (42%)

Brightness & Saturation Gradients

These gradients show how the CIELCh color 62, 60.923, 2.827 changes by changing the brightness by 10 percent. The first figure shows a shift by +10% for each color and the second figure -10%.

Similar to the brightness gradients but the following saturation gradients show a change of the CIELCh color 62, 60.923, 2.827 by changing the saturation by 10% instead.

 62, 60.923, 2.827

 62, 60.923, 2.827

 100, 60.923, 2.827

 52, 60.923, 2.827

 82, 60.923, 2.827

 42, 60.923, 2.827

 92, 60.923, 2.827

 32, 60.923, 2.827

 22, 60.923, 2.827

 12, 60.923, 2.827

 2, 60.923, 2.827

 0, 60.923, 2.827

 62, 60.923, 2.827

 62, 60.923, 2.827

 58, 69.254, 5.729

 67, 51.389, 0.534

55, 75.965, 9.416

72, 41.161,
358.687

53, 80.917, 14.036

78, 30.667,
357.166

52, 84.572, 19.362

84, 20.220,
355.881

90, 10.020,
354.760

97, 0.177, 350.778

99, 3.143, 199.417

Harmonies

Complementary

The Complementary color scheme is a pair of colors which are on the opposite of each other on the color wheel.



62, 60.923, 2.827



88, 52.261, 166.819

Rectangle

The Rectangle color scheme consists of four colors that form a rectangle on the color wheel.



62, 60.923, 2.827



62, 60.923, 52.827



62, 60.923, 182.827



62, 60.923, 232.827

Sweetspot

The Sweet Spot groups the original color and five complimentary colors.



62, 60.919, 2.829



88, 18.511, 355.630



59, 85.452, 317.097



45, 12.925, 355.974



0, 0.000, 0.000



53, 0.007, 296.813

Same Dimension

The Same Dimension uses a secret algorithm to generate beautiful new colors.



62, 60.919, 2.829



59, 72.679, 6.384



65, 57.425, 38.054



48, 5.568, 354.685



39, 68.295, 18.286



9, 29.628, 9.154

Inverse Universe

The Inverse Universe completely reimagines the original color for something new.



62, 60.919, 2.829



59, 72.679, 6.384



82, 35.248, 219.348



48, 5.568, 354.685



39, 68.295, 18.286



9, 29.628, 9.154

Previews

White Background



This preview shows how the CIELCh color 62, 60.923, 2.827 looks on a white background.

Color Contrast Check

Large Text (above 18pt) WCAG AA × Fail

Any Text WCAG AA × Fail

Large Text (above 18pt) WCAG AAA × Fail

Any Text WCAG AAA × Fail

Black Background



This preview shows how the CIELCh color 62, 60.923, 2.827 looks on a black background.

Color Contrast Check

Large Text (above 18pt) WCAG AA ✓ Pass

Any Text WCAG AA ✓ Pass

Large Text (above 18pt) WCAG AAA ✓ Pass

Any Text WCAG AAA ✓ Pass

If you want to check with other color combinations, try the [Color Contrast Checker](#).

CIELCh 62, 60.923, 2.827

Background



This preview shows how black text looks on a background with the CIELCh color 62, 60.923, 2.827.

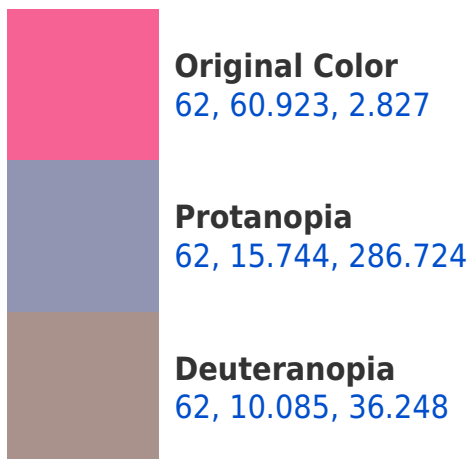


This preview shows how white text looks on a background with the CIELCh color 62, 60.923, 2.827.

Color Blindness Simulation

Color vision deficiency is a very complex topic, and I could not describe the different causes any better than Wikipedia does, so if you want to learn more, you should check out their [article about color blindness](#).

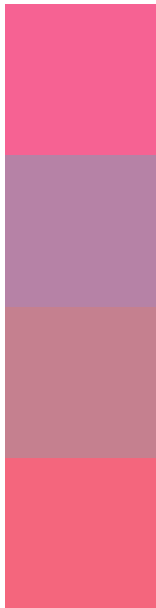
Dichromacy





Tritanopia
62, 58.306, 23.206

Trichromacy



Original Color
62, 60.923, 2.827

Protanomaly
60, 28.114, 336.650

Deuteranomaly
61, 28.864, 6.031

Tritanomaly
62, 58.430, 15.285

Monochromacy



Original Color
62, 60.923, 2.827

Achromatopsia
61, 0.008, 296.813

Achromatomaly
60, 23.549, 356.826

CSS Examples

Text

The CSS property to change the color of the text to CIELCh 62, 60.923, 2.827 is called "color". The color property can be set on classes, ids or directly on the HTML element.

This example shows how text in the color `rgb(246, 98, 147)` looks like.

```
.text, #text, p{  
    color:rgb(246, 98, 147)  
}
```

If you want to add a text shadow in that color use the text-shadow property, you can generate a text shadow directly with our [CSS Text Shadow Generator](#).

Here you see how black text with a 4 pixel rgb(246, 98, 147) colored shadow looks like.

```
.shadow{ text-shadow: 4px 4px 2px rgb(246, 98, 147) }
```

Border

The CSS property to change the border of an element to CIELCh 62, 60.923, 2.827 is called "border". The border property can be set on classes, ids or directly on the HTML element.

This example shows the color as border, it can be applied via the CSS property "border" or "border-color".

```
.border, #border, table{ border:4px solid rgb(246, 98, 147) }
```

If only the border color should be changed use the property `border-color`.

```
.border{ border-color:rgb(246, 98, 147) }
```

If you want to add a box shadow in that color use:

Here you see how a box with a 4 pixel `rgb(246, 98, 147)` colored shadow looks like.

```
.boxshadow{ -moz-box-shadow:4px 4px 4px  
4px rgb(246, 98, 147); -webkit-box-  
shadow:4px 4px 4px 4px rgb(246, 98, 147);  
box-shadow:4px 4px 4px 4px rgb(246, 98,  
147) }
```

Background

The CSS property to change the background color of an element to CIELCh 62, 60.923, 2.827 is called "background". The background property can be set on classes, ids or directly on the HTML element.

```
.background, #background, body{  
background: rgb(246, 98, 147) }
```

If only the background color should be changed can be used:

```
.background{ background-color: rgb(246, 98,  
147) }
```

This example shows the color as background, it is applied via the CSS property "background".

To optimize and compress your CSS code, you can use our [online CSS compressor and optimizer](#) based on csstidy. If you want to create a linear or radial gradient as background or border, check our [CSS Gradient Generator](#).

Hey! You found this booklet interesting? Support Converting Colors with the new Membership Option!

The pro membership hides all ads, plus gives you double the colors in the color bucket, and more awesome pro features!

[Learn more, Memberships starting at \\$2.50/m!](#)

**Follow me
on Twitter!**

@ConvertingColor