

Converting Colors

CIELCh(62, 63.048, 7.821)

Have a look what the booklet for
CIELCh(62, 63.048, 7.821) contains.

CIELCh(62, 62.985, 7.961)	3
<i>Conversions</i>	4
<i>Details</i>	6
<i>Harmonies</i>	11
<i>Previews</i>	20
<i>Color Blindness Simulation</i>	23
<i>CSS Examples</i>	26

Color

CIELCh(62, 62.985, 7.961)

Conversions

Conversions Part 1

Format	Color
Hex	FA5F89
RGB	250, 95, 137
RGB Percent	98%, 37%, 54%
CMY	0.0187, 0.6266, 0.4620
CMYK	0.00, 0.62, 0.45, 0.02
HSL	344°, 94%, 68%
HSV	344°, 62%, 98%
XYZ	48.1494, 30.4025, 27.0702
YIQ	146.1330, 78.8980, 45.9220

Conversions

Conversions Part 2

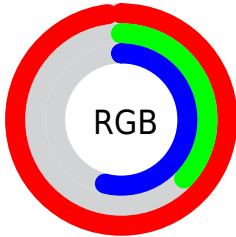
Format	Color
R _Y B	250, 95, 137
Decimal	16408457
CIE Lab	62.00, 62.38, 8.72
CIE LCh	62, 62.985, 7.961
Yxy	30.4025, 0.4559, 0.2878
Android (android.graphics.Color)	4294598537 (0xFFFA5F89)
YUV	146.1330, -4.5026, 91.0914
Hunter-Lab	55.1385, 59.3818, 9.4886

Details

The CIELCh color **62, 62.985, 7.961** is a light color, and the websafe version is hex **FF6699**. The color can be described as light muted rose. A complement of this color would be **90, 51.235, 170.922**, and the grayscale version is **61, 0.008, 296.813**.

A 20% lighter version of the original color is **74, 43.235, 356.111**, and **42, 63.211, 8.295** is the 20% darker color. If you saturate the color by 10%, you get **58, 71.628, 11.222**, and if you desaturate by 10%, it is **67, 53.237, 5.396**.

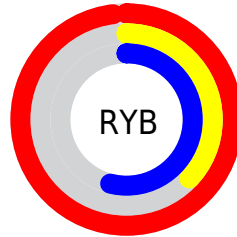
Distribution



Red (98%)

Green (37%)

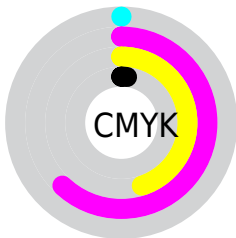
Blue (54%)



Red (98%)

Yellow (37%)

Blue (54%)

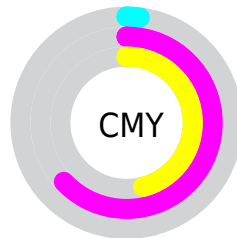


Cyan (0%)

Magenta (62%)

Yellow (45%)

Black (2%)



Cyan (2%)



Magenta (63%)


Yellow (46%)

Brightness & Saturation Gradients

These gradients show how the CIELCh color 62, 62.985, 7.961 changes by changing the brightness by 10 percent. The first figure shows a shift by +10% for each color and the second figure -10%.

Similar to the brightness gradients but the following saturation gradients show a change of the CIELCh color 62, 62.985, 7.961 by changing the saturation by 10% instead.

 62, 62.985, 7.961  62, 62.985, 7.961

 100, 62.985, 7.961  52, 62.985, 7.961

 82, 62.985, 7.961  42, 62.985, 7.961

 92, 62.985, 7.961  32, 62.985, 7.961

 22, 62.985, 7.961

 12, 62.985, 7.961

 2, 62.985, 7.961

 0, 62.985, 7.961

 62, 62.985, 7.961  62, 62.985, 7.961

 58, 71.628, 11.222  67, 53.237, 5.396

■ 55, 78.818, 15.339

■ 72, 42.862, 3.353

■ 53, 84.517, 20.377

■ 78, 32.279, 1.695

■ 53, 88.430, 24.880

■ 84, 21.801, 0.320

■ 90, 11.623,
359.142

■ 97, 1.854, 357.888

■ 100, 1.654,
199.701

Harmonies

Complementary

The Complementary color scheme is a pair of colors which are on the opposite of each other on the color wheel.



62, 62.985, 7.961



90, 51.235, 170.922

Rectangle

The Rectangle color scheme consists of four colors that form a rectangle on the color wheel.



62, 62.985, 7.961



62, 62.985, 57.961



62, 62.985, 187.961



62, 62.985, 237.961

Sweetspot

The Sweet Spot groups the original color and five complimentary colors.



62, 62.981, 7.963



87, 19.055, 359.958



60, 89.131, 318.670



45, 13.189, 0.312



0, 0.000, 0.000



53, 0.007, 296.813

Same Dimension

The Same Dimension uses a secret algorithm to generate beautiful new colors.



62, 62.981, 7.963



58, 74.343, 12.022



67, 58.613, 41.982



49, 5.495, 358.873



40, 71.025, 23.796



9, 30.674, 13.902

Inverse Universe

The Inverse Universe completely reimagines the original color for something new.



62, 62.981, 7.963



58, 74.343, 12.022



81, 35.910, 227.640



49, 5.495, 358.873



40, 71.025, 23.796



9, 30.674, 13.902

Previews

White Background



This preview shows how the CIELCh color 62, 62.985, 7.961 looks on a white background.

Color Contrast Check

Large Text (above 18pt) WCAG AA × Fail

Any Text WCAG AA × Fail

Large Text (above 18pt) WCAG AAA × Fail

Any Text WCAG AAA × Fail

Black Background



This preview shows how the CIELCh color 62, 62.985, 7.961 looks on a black background.

Color Contrast Check

Large Text (above 18pt) WCAG AA ✓ Pass

Any Text WCAG AA ✓ Pass

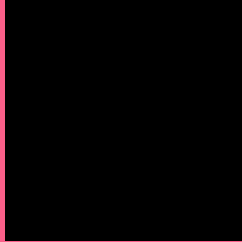
Large Text (above 18pt) WCAG AAA ✓ Pass

Any Text WCAG AAA ✓ Pass

If you want to check with other color combinations, try the [Color Contrast Checker](#).

CIELCh 62, 62.985, 7.961

Background



This preview shows how black text looks on a background with the CIELCh color 62, 62.985, 7.961.

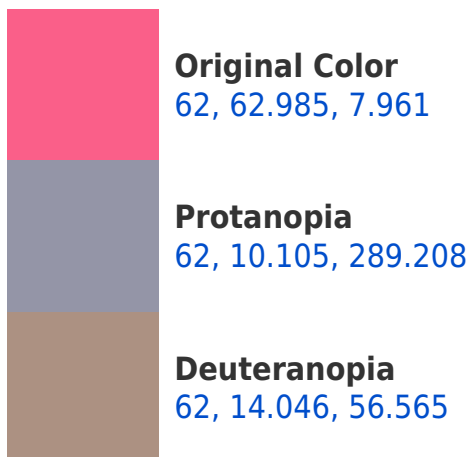


This preview shows how white text looks on a background with the CIELCh color 62, 62.985, 7.961.

Color Blindness Simulation

Color vision deficiency is a very complex topic, and I could not describe the different causes any better than Wikipedia does, so if you want to learn more, you should check out their [article about color blindness](#).

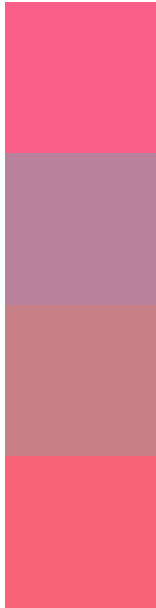
Dichromacy





Tritanopia
62, 62.199, 24.122

Trichromacy



Original Color
62, 62.985, 7.961

Protanomaly
60, 26.356, 347.473

Deuteranomaly
61, 30.287, 16.556

Tritanomaly
62, 61.863, 18.076

Monochromacy



Original Color
62, 62.985, 7.961

Achromatopsia
61, 0.008, 296.813

Achromatomaly
60, 23.859, 1.598

CSS Examples

Text

The CSS property to change the color of the text to CIELCh 62, 62.985, 7.961 is called "color". The color property can be set on classes, ids or directly on the HTML element.

This example shows how text in the color `rgb(250, 95, 137)` looks like.

```
.text, #text, p{  
  color:rgb(250, 95, 137)  
}
```

If you want to add a text shadow in that color use the text-shadow property, you can generate a text shadow directly with our [CSS Text Shadow Generator](#).

Here you see how black text with a 4 pixel rgb(250, 95, 137) colored shadow looks like.

```
.shadow{ text-shadow: 4px 4px 2px rgb(250, 95, 137) }
```

Border

The CSS property to change the border of an element to CIELCh 62, 62.985, 7.961 is called "border". The border property can be set on classes, ids or directly on the HTML element.

This example shows the color as border, it can be applied via the CSS property "border" or "border-color".

```
.border, #border, table{ border:4px solid rgb(250, 95, 137) }
```

If only the border color should be changed use the property `border-color`.

```
.border{ border-color:rgb(250, 95, 137) }
```

If you want to add a box shadow in that color use:

Here you see how a box with a 4 pixel `rgb(250, 95, 137)` colored shadow looks like.

```
.boxshadow{ -moz-box-shadow:4px 4px 4px 4px rgb(250, 95, 137); -webkit-box-shadow:4px 4px 4px 4px rgb(250, 95, 137); box-shadow:4px 4px 4px 4px rgb(250, 95, 137) }
```

Background

The CSS property to change the background color of an element to CIELCh 62, 62.985, 7.961 is called "background". The background property can be set on classes, ids or directly on the HTML element.

```
.background, #background, body{  
background: rgb(250, 95, 137) }
```

If only the background color should be changed can be used:

```
.background{ background-color: rgb(250, 95,  
137) }
```

This example shows the color as background, it is applied via the CSS property "background".

To optimize and compress your CSS code, you can use our [online CSS compressor and optimizer](#) based on csstidy. If you want to create a linear or radial gradient as background or border, check our [CSS Gradient Generator](#).

Hey! You found this booklet interesting? Support Converting Colors with the new Membership Option!

The pro membership hides all ads, plus gives you double the colors in the color bucket, and more awesome pro features!

[Learn more, Memberships starting at \\$2.50/m!](#)

**Follow me
on Twitter!**

@ConvertingColor