

# Converting Colors

CIELCh(62, 64.308, 14.842)

Have a look what the booklet for  
CIELCh(62, 64.308, 14.842) contains.

<b>CIELCh(62, 64.350, 14.914)</b> .....	3
<i><b>Conversions</b></i> .....	4
<i><b>Details</b></i> .....	6
<i><b>Harmonies</b></i> .....	11
<i><b>Previews</b></i> .....	20
<i><b>Color Blindness Simulation</b></i> .....	23
<i><b>CSS Examples</b></i> .....	26

# **Color**

**CIELCh(62, 64.350, 14.914)**

# Conversions

## Conversions Part 1

Format	Color
Hex	FD5F7C
RGB	253, 95, 124
RGB Percent	99%, 37%, 49%
CMY	0.0091, 0.6286, 0.5147
CMYK	0.00, 0.63, 0.51, 0.01
HSL	349°, 97%, 68%
HSV	349°, 63%, 99%
XYZ	48.0785, 30.4025, 22.3174
YIQ	145.5480, 84.8590, 42.5150

# Conversions

## Conversions Part 2

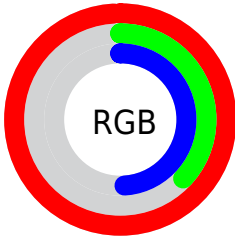
<b>Format</b>	<b>Color</b>
R <sub>Y</sub> B	253, 95, 124
Decimal	16605052
CIE Lab	62.00, 62.18, 16.56
CIE LCh	62, 64.350, 14.914
Yxy	30.4025, 0.4770, 0.3016
Android (android.graphics.Color)	4294795132 (0xFFFD5F7C)
YUV	145.5480, -10.6232, 94.2354
Hunter-Lab	55.1385, 59.1523, 14.5992

# Details

The CIELCh color **62, 64.350, 14.914** is a light color, and the websafe version is hex **FF6699**. The color can be described as light muted rose. A complement of this color would be **91, 48.092, 178.046**, and the grayscale version is **60, 0.008, 296.813**.

A 20% lighter version of the original color is **74, 41.523, 5.875**, and **42, 64.417, 14.664** is the 20% darker color. If you saturate the color by 10%, you get **58, 73.886, 18.413**, and if you desaturate by 10%, it is **67, 53.992, 12.158**.

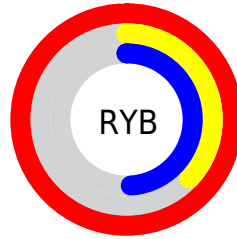
# Distribution



Red (99%)

Green (37%)

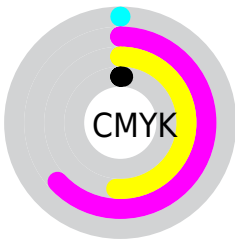
Blue (49%)



Red (99%)

Yellow (37%)

Blue (49%)

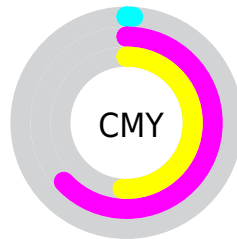


Cyan (0%)

Magenta (63%)

Yellow (51%)

Black (1%)



Cyan (1%)

Magenta (63%)

Yellow (51%)

# Brightness & Saturation Gradients

These gradients show how the CIELCh color 62, 64.350, 14.914 changes by changing the brightness by 10 percent. The first figure shows a shift by +10% for each color and the second figure -10%.

Similar to the brightness gradients but the following saturation gradients show a change of the CIELCh color 62, 64.350, 14.914 by changing the saturation by 10% instead.



 62, 64.350, 14.914

 62, 64.350, 14.914

 100, 64.350,  
14.914

 52, 64.350, 14.914

 82, 64.350, 14.914

 42, 64.350, 14.914

 92, 64.350, 14.914

 32, 64.350, 14.914

 22, 64.350, 14.914

 12, 64.350, 14.914

 2, 64.350, 14.914

 0, 64.350, 14.914

 62, 64.350, 14.914

 62, 64.350, 14.914

 58, 73.886, 18.413

 67, 53.992, 12.158

■ 55, 82.294, 22.750

■ 72, 43.242, 9.982

■ 54, 89.493, 27.833

■ 78, 32.477, 8.246

■ 53, 94.266, 31.754

■ 84, 21.973, 6.833

■ 91, 11.896, 5.648

■ 98, 2.328, 4.459

100, 0.807,  
200.175

# Harmonies

# Complementary

The Complementary color scheme is a pair of colors which are on the opposite of each other on the color wheel.



62, 64.350, 14.914



91, 48.092, 178.046

# Rectangle

The Rectangle color scheme consists of four colors that form a rectangle on the color wheel.



62, 64.350, 14.914



62, 64.350, 64.914



62, 64.350, 194.914



62, 64.350, 244.914

# Sweetspot

The Sweet Spot groups the original color and five complimentary colors.



62, 64.346, 14.916



87, 18.513, 6.396



62, 90.969, 321.268



45, 12.835, 6.750



0, 0.000, 0.000



53, 0.007, 296.813



# Same Dimension

The Same Dimension uses a secret algorithm to generate beautiful new colors.



62, 64.346, 14.916



58, 76.649, 19.426



70, 57.402, 48.846



50, 5.400, 5.321



40, 75.755, 30.787



10, 32.080, 19.525





# Inverse Universe

The Inverse Universe completely reimagines the original color for something new.



62, 64.346, 14.916



58, 76.649, 19.426



78, 37.188, 241.411



50, 5.400, 5.321



40, 75.755, 30.787



10, 32.080, 19.525



# Previews

## White Background



This preview shows how the CIELCh color 62, 64.350, 14.914 looks on a white background.

## Color Contrast Check

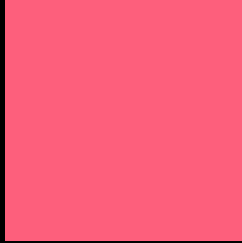
Large Text (above 18pt) WCAG AA × Fail

Any Text WCAG AA × Fail

Large Text (above 18pt) WCAG AAA × Fail

Any Text WCAG AAA × Fail

# Black Background



This preview shows how the CIELCh color 62, 64.350, 14.914 looks on a black background.

## Color Contrast Check

Large Text (above 18pt) WCAG AA ✓ Pass

Any Text WCAG AA ✓ Pass

Large Text (above 18pt) WCAG AAA ✓ Pass

Any Text WCAG AAA ✓ Pass

If you want to check with other color combinations, try the [Color Contrast Checker](#).

# CIELCh 62, 64.350, 14.914

## Background



This preview shows how black text looks on a background with the CIELCh color 62, 64.350, 14.914.



This preview shows how white text looks on a background with the CIELCh color 62, 64.350, 14.914.

# Color Blindness Simulation

Color vision deficiency is a very complex topic, and I could not describe the different causes any better than Wikipedia does, so if you want to learn more, you should check out their [article about color blindness](#).

## Dichromacy



### Original Color

62, 64.350, 14.914

### Protanopia

62, 2.058, 324.445

### Deuteranopia

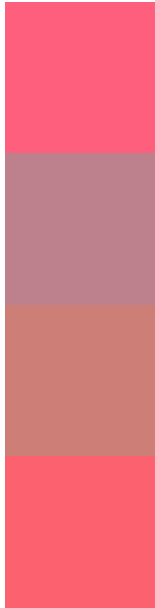
62, 20.982, 67.737



**Tritanopia**  
62, 65.369, 25.277



# Trichromacy



**Original Color**  
62, 64.350, 14.914

**Protanomaly**  
60, 25.138, 5.566

**Deuteranomaly**  
61, 33.801, 29.463

**Tritanomaly**  
62, 64.598, 21.685

# Monochromacy



**Original Color**  
62, 64.350, 14.914

**Achromatopsia**  
60, 0.008, 296.813

**Achromatomaly**  
59, 23.772, 8.552

# CSS Examples

## Text

The CSS property to change the color of the text to CIELCh 62, 64.350, 14.914 is called "color". The color property can be set on classes, ids or directly on the HTML element.

This example shows how text in the color `rgb(253, 95, 124)` looks like.

```
.text, #text, p{  
    color:rgb(253, 95, 124)  
}
```

If you want to add a text shadow in that color use the text-shadow property, you can generate a text shadow directly with our [CSS Text Shadow Generator](#).

Here you see how black text with a 4 pixel rgb(253, 95, 124) colored shadow looks like.

```
.shadow{ text-shadow: 4px 4px 2px rgb(253, 95, 124) }
```

## Border

The CSS property to change the border of an element to CIELCh 62, 64.350, 14.914 is called "border". The border property can be set on classes, ids or directly on the HTML element.

This example shows the color as border, it can be applied via the CSS property "border" or "border-color".

```
.border, #border, table{ border:4px solid rgb(253, 95, 124) }
```

If only the border color should be changed use the property border-color.

```
.border{ border-color:rgb(253, 95, 124) }
```

If you want to add a box shadow in that color use:

Here you see how a box with a 4 pixel rgb(253, 95, 124) colored shadow looks like.

```
.boxshadow{ -moz-box-shadow:4px 4px 4px  
4px rgb(253, 95, 124); -webkit-box-  
shadow:4px 4px 4px 4px rgb(253, 95, 124);  
box-shadow:4px 4px 4px 4px rgb(253, 95,  
124) }
```

# Background

The CSS property to change the background color of an element to CIELCh 62, 64.350, 14.914 is called "background". The background property can be set on classes, ids or directly on the HTML element.

```
.background, #background, body{  
background: rgb(253, 95, 124) }
```

If only the background color should be changed can be used:

```
.background{ background-color: rgb(253, 95,  
124) }
```

This example shows the color as background, it is applied via the CSS property "background".

To optimize and compress your CSS code, you can use our [online CSS compressor and optimizer](#) based on csstidy. If you want to create a linear or radial gradient as background or border, check our [CSS Gradient Generator](#).

Hey! You found this booklet interesting? Support Converting Colors with the new Membership Option!

The pro membership hides all ads, plus gives you double the colors in the color bucket, and more awesome pro features!

**[Learn more, Memberships starting at \\$2.50/m!](#)**

**Follow me  
on Twitter!**

@ConvertingColor