

Converting Colors

CIELCh(62, 65.186, 14.047)

Have a look what the booklet for
CIELCh(62, 65.186, 14.047) contains.

CIELCh(62, 65.345, 14.029)	3
<i>Conversions</i>	4
<i>Details</i>	6
<i>Harmonies</i>	11
<i>Previews</i>	20
<i>Color Blindness Simulation</i>	23
<i>CSS Examples</i>	26

Color

CIELCh(62, 65.345, 14.029)

Conversions

Conversions Part 1

Format	Color
Hex	FE5D7D
RGB	254, 93, 125
RGB Percent	100%, 36%, 49%
CMY	0.0037, 0.6350, 0.5096
CMYK	0.00, 0.63, 0.51, 0.00
HSL	348°, 99%, 68%
HSV	348°, 63%, 100%
XYZ	48.5193, 30.4025, 22.7294
YIQ	144.7870, 85.6840, 44.0840

Conversions

Conversions Part 2

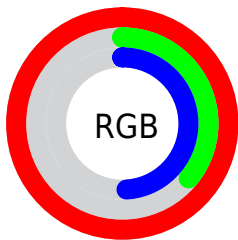
Format	Color
RYB	254, 93, 125
Decimal	16670077
CIELab	62.00, 63.40, 15.84
CIELCh	62, 65.345, 14.029
Yxy	30.4025, 0.4773, 0.2991
Android (android.graphics.Color)	4294860157 (0xFFFE5D7D)
YUV	144.7870, -9.7550, 95.7798
Hunter-Lab	55.1385, 60.5792, 14.1562

Details

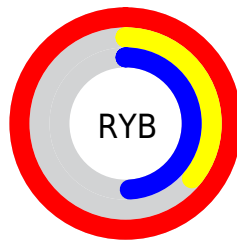
The CIELCh color **62, 65.345, 14.029** is a light color, and the websafe version is hex **FF6699**. The color can be described as light muted rose. A complement of this color would be **91, 49.385, 176.614**, and the grayscale version is **60, 0.008, 296.813**.

A 20% lighter version of the original color is **74, 42.568, 4.223**, and **42, 65.484, 14.327** is the 20% darker color. If you saturate the color by 10%, you get **58, 74.657, 17.582**, and if you desaturate by 10%, it is **67, 55.117, 11.230**.

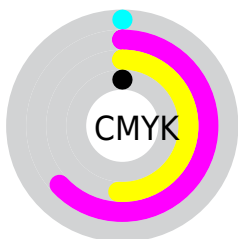
Distribution



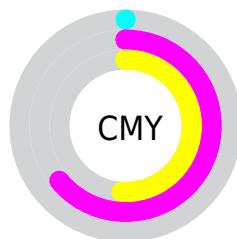
- Red (100%)
- Green (36%)
- Blue (49%)



- Red (100%)
- Yellow (36%)
- Blue (49%)



- Cyan (0%)
- Magenta (63%)
- Yellow (51%)
- Black (0%)



- Cyan (0%)
- Magenta (64%)
- Yellow (51%)


Brightness & Saturation Gradients

These gradients show how the CIELCh color 62, 65.345, 14.029 changes by changing the brightness by 10 percent. The first figure shows a shift by +10% for each color and the second figure -10%.

Similar to the brightness gradients but the following saturation gradients show a change of the CIELCh color 62, 65.345, 14.029 by changing the saturation by 10% instead.

 62, 65.345, 14.029

 62, 65.345, 14.029

 100, 65.345,
14.029

 52, 65.345, 14.029

 82, 65.345, 14.029

 42, 65.345, 14.029

 92, 65.345, 14.029

 32, 65.345, 14.029

 22, 65.345, 14.029

 12, 65.345, 14.029

 2, 65.345, 14.029

 0, 65.345, 14.029

 62, 65.345, 14.029

 62, 65.345, 14.029

 58, 74.657, 17.582

 67, 55.117, 11.230

■ 55, 82.763, 21.988

■ 72, 44.410, 9.021

■ 54, 89.632, 27.162

■ 78, 33.618, 7.255

■ 53, 93.719, 30.705

■ 84, 23.038, 5.816

■ 91, 12.853, 4.610

■ 97, 3.155, 3.464

100, 0.326,
201.417

Harmonies

Complementary

The Complementary color scheme is a pair of colors which are on the opposite of each other on the color wheel.



62, 65.345, 14.029



91, 49.385, 176.614

Rectangle

The Rectangle color scheme consists of four colors that form a rectangle on the color wheel.



62, 65.345, 14.029



62, 65.345, 64.029



62, 65.345, 194.029



62, 65.345, 244.029

Sweetspot

The Sweet Spot groups the original color and five complimentary colors.



62, 65.341, 14.031



87, 18.588, 5.266



62, 92.388, 321.284



45, 12.884, 5.622



0, 0.000, 0.000



53, 0.007, 296.813

Same Dimension

The Same Dimension uses a secret algorithm to generate beautiful new colors.



62, 65.341, 14.031



58, 77.142, 18.663



70, 58.616, 48.838



50, 5.427, 4.185



40, 75.011, 29.696



10, 31.992, 18.801

Inverse Universe

The Inverse Universe completely reimagines the original color for something new.



62, 65.341, 14.031



58, 77.142, 18.663



78, 37.705, 241.672



50, 5.427, 4.185



40, 75.011, 29.696



10, 31.992, 18.801

Previews

White Background



This preview shows how the CIELCh color 62, 65.345, 14.029 looks on a white background.

Color Contrast Check

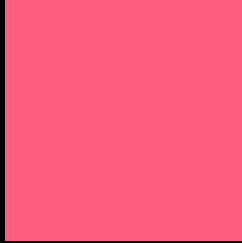
Large Text (above 18pt) WCAG AA × Fail

Any Text WCAG AA × Fail

Large Text (above 18pt) WCAG AAA × Fail

Any Text WCAG AAA × Fail

Black Background



This preview shows how the CIELCh color 62, 65.345, 14.029 looks on a black background.

Color Contrast Check

Large Text (above 18pt) WCAG AA ✓ Pass

Any Text WCAG AA ✓ Pass

Large Text (above 18pt) WCAG AAA ✓ Pass

Any Text WCAG AAA ✓ Pass

If you want to check with other color combinations, try the [Color Contrast Checker](#).

CIELCh 62, 65.345, 14.029

Background



This preview shows how black text looks on a background with the CIELCh color 62, 65.345, 14.029.



This preview shows how white text looks on a background with the CIELCh color 62, 65.345, 14.029.

Color Blindness Simulation

Color vision deficiency is a very complex topic, and I could not describe the different causes any better than Wikipedia does, so if you want to learn more, you should check out their [article about color blindness](#).

Dichromacy



Original Color

62, 65.345, 14.029

Protanopia

62, 3.050, 312.573

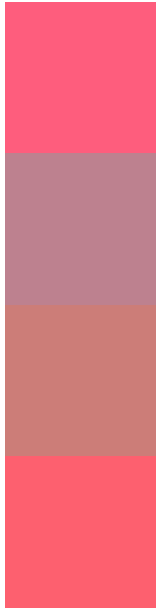
Deuteranopia

62, 20.542, 66.839



Tritanopia
62, 66.235, 25.476

Trichromacy



Original Color
62, 65.345, 14.029

Protanomaly
60, 25.239, 4.326

Deuteranomaly
61, 33.966, 27.673

Tritanomaly
62, 65.301, 21.471

Monochromacy



Original Color
62, 65.345, 14.029

Achromatopsia
60, 0.008, 296.813

Achromatomaly
59, 24.753, 6.576

CSS Examples

Text

The CSS property to change the color of the text to CIELCh 62, 65.345, 14.029 is called "color". The color property can be set on classes, ids or directly on the HTML element.

This example shows how text in the color `rgb(254, 93, 125)` looks like.

```
.text, #text, p{  
    color:rgb(254, 93, 125)  
}
```

If you want to add a text shadow in that color use the text-shadow property, you can generate a text shadow directly with our [CSS Text Shadow Generator](#).

Here you see how black text with a 4 pixel rgb(254, 93, 125) colored shadow looks like.

```
.shadow{ text-shadow: 4px 4px 2px rgb(254, 93, 125) }
```

Border

The CSS property to change the border of an element to CIELCh 62, 65.345, 14.029 is called "border". The border property can be set on classes, ids or directly on the HTML element.

This example shows the color as border, it can be applied via the CSS property "border" or "border-color".

```
.border, #border, table{ border:4px solid rgb(254, 93, 125) }
```

If only the border color should be changed use the property `border-color`.

```
.border{ border-color:rgb(254, 93, 125) }
```

If you want to add a box shadow in that color use:

Here you see how a box with a 4 pixel `rgb(254, 93, 125)` colored shadow looks like.

```
.boxshadow{ -moz-box-shadow:4px 4px 4px  
4px rgb(254, 93, 125); -webkit-box-  
shadow:4px 4px 4px 4px rgb(254, 93, 125);  
box-shadow:4px 4px 4px 4px rgb(254, 93,  
125) }
```

Background

The CSS property to change the background color of an element to CIELCh 62, 65.345, 14.029 is called "background". The background property can be set on classes, ids or directly on the HTML element.

```
.background, #background, body{  
background: rgb(254, 93, 125) }
```

If only the background color should be changed can be used:

```
.background{ background-color: rgb(254, 93,  
125) }
```

This example shows the color as background, it is applied via the CSS property "background".

To optimize and compress your CSS code, you can use our [online CSS compressor and optimizer](#) based on csstidy. If you want to create a linear or radial gradient as background or border, check our [CSS Gradient Generator](#).

Hey! You found this booklet interesting? Support Converting Colors with the new Membership Option!

The pro membership hides all ads, plus gives you double the colors in the color bucket, and more awesome pro features!

[Learn more, Memberships starting at \\$2.50/m!](#)

**Follow me
on Twitter!**

@ConvertingColor