

Converting Colors

CIELCh(62, 65.749, 11.548)

Have a look what the booklet for
CIELCh(62, 65.749, 11.548) contains.

CIELCh(62, 65.845, 11.516)	3
<i>Conversions</i>	4
<i>Details</i>	6
<i>Harmonies</i>	11
<i>Previews</i>	20
<i>Color Blindness Simulation</i>	23
<i>CSS Examples</i>	26

Color

CIELCh(62, 65.845, 11.516)

Conversions

Conversions Part 1

Format	Color
Hex	FF5C82
RGB	255, 92, 130
RGB Percent	100%, 36%, 51%
CMY	0.0013, 0.6404, 0.4912
CMYK	0.00, 0.64, 0.49, 0.00
HSL	346°, 100%, 68%
HSV	346°, 64%, 100%
XYZ	48.9297, 30.4025, 24.3138
YIQ	145.0690, 84.9500, 46.3740

Conversions

Conversions Part 2

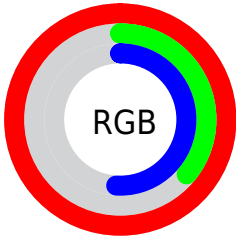
Format	Color
R _Y B	255, 92, 130
Decimal	16735362
CIE Lab	62.00, 64.52, 13.15
CIE LCh	62, 65.845, 11.516
Yxy	30.4025, 0.4721, 0.2933
Android (android.graphics.Color)	4294925442 (0xFFFF5C82)
YUV	145.0690, -7.4290, 96.4095
Hunter-Lab	55.1385, 61.9077, 12.4525

Details

The CIELCh color **62, 65.845, 11.516** is a light color, and the websafe version is hex **FF6699**. The color can be described as light muted rose. A complement of this color would be **91, 51.392, 173.581**, and the grayscale version is **60, 0.008, 296.813**.

A 20% lighter version of the original color is **74, 43.222, 0.063**, and **42, 65.946, 11.579** is the 20% darker color. If you saturate the color by 10%, you get **58, 74.709, 15.055**, and if you desaturate by 10%, it is **67, 55.907, 8.731**.

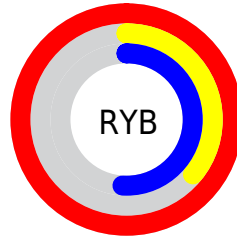
Distribution



Red (100%)

Green (36%)

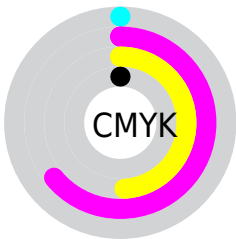
Blue (51%)



Red (100%)

Yellow (36%)

Blue (51%)

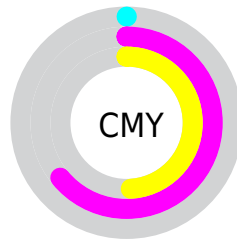


Cyan (0%)

Magenta (64%)

Yellow (49%)

Black (0%)



Cyan (0%)

Magenta (64%)

Yellow (49%)

Brightness & Saturation Gradients

These gradients show how the CIELCh color 62, 65.845, 11.516 changes by changing the brightness by 10 percent. The first figure shows a shift by +10% for each color and the second figure -10%.

Similar to the brightness gradients but the following saturation gradients show a change of the CIELCh color 62, 65.845, 11.516 by changing the saturation by 10% instead.

62, 65.845, 11.516

62, 65.845, 11.516

100, 65.845,
11.516

52, 65.845, 11.516

82, 65.845, 11.516

42, 65.845, 11.516

92, 65.845, 11.516

32, 65.845, 11.516

22, 65.845, 11.516

12, 65.845, 11.516

2, 65.845, 11.516

0, 65.845, 11.516

62, 65.845, 11.516

62, 65.845, 11.516

58, 74.709, 15.055

67, 55.907, 8.731

■ 56, 82.215, 19.472

■ 72, 45.349, 6.528

■ 54, 88.397, 24.731

■ 78, 34.595, 4.760

■ 54, 91.755, 28.053

■ 84, 23.964, 3.310

■ 91, 13.663, 2.089

■ 97, 3.805, 0.954

100, 0.115,
205.171

Harmonies

Complementary

The Complementary color scheme is a pair of colors which are on the opposite of each other on the color wheel.



62, 65.845, 11.516



91, 51.392, 173.581

Rectangle

The Rectangle color scheme consists of four colors that form a rectangle on the color wheel.



62, 65.845, 11.516



62, 65.845, 61.516



62, 65.845, 191.516



62, 65.845, 241.516

Sweetspot

The Sweet Spot groups the original color and five complimentary colors.



62, 65.841, 11.518



87, 18.792, 2.678



61, 93.065, 319.736



45, 13.016, 3.034



0, 0.000, 0.000



53, 0.007, 296.813

Same Dimension

The Same Dimension uses a secret algorithm to generate beautiful new colors.



62, 65.841, 11.518



57, 77.197, 16.291



68, 60.801, 44.712



50, 5.498, 1.590



40, 73.362, 26.993



10, 31.791, 16.957

Inverse Universe

The Inverse Universe completely reimagines the original color for something new.



62, 65.841, 11.518



57, 77.197, 16.291



80, 37.252, 233.632



50, 5.498, 1.590



40, 73.362, 26.993



10, 31.791, 16.957

Previews

White Background



This preview shows how the CIELCh color 62, 65.845, 11.516 looks on a white background.

Color Contrast Check

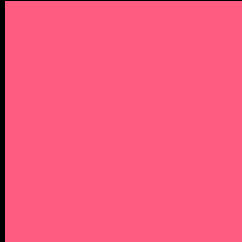
Large Text (above 18pt) WCAG AA × Fail

Any Text WCAG AA × Fail

Large Text (above 18pt) WCAG AAA × Fail

Any Text WCAG AAA × Fail

Black Background



This preview shows how the CIELCh color 62, 65.845, 11.516 looks on a black background.

Color Contrast Check

Large Text (above 18pt) WCAG AA ✓ Pass

Any Text WCAG AA ✓ Pass

Large Text (above 18pt) WCAG AAA ✓ Pass

Any Text WCAG AAA ✓ Pass

If you want to check with other color combinations, try the [Color Contrast Checker](#).

CIELCh 62, 65.845, 11.516

Background



This preview shows how black text looks on a background with the CIELCh color 62, 65.845, 11.516.



This preview shows how white text looks on a background with the CIELCh color 62, 65.845, 11.516.

Color Blindness Simulation

Color vision deficiency is a very complex topic, and I could not describe the different causes any better than Wikipedia does, so if you want to learn more, you should check out their [article about color blindness](#).

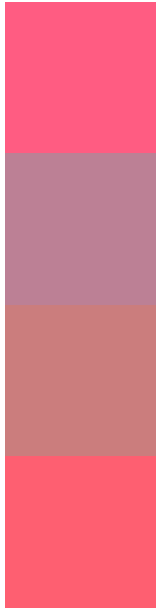
Dichromacy





Tritanopia
62, 66.235, 25.476

Trichromacy



Original Color
62, 65.845, 11.516

Protanomaly
60, 26.322, 356.042

Deuteranomaly
61, 32.897, 23.047

Tritanomaly
62, 65.745, 20.329

Monochromacy



Original Color
62, 65.845, 11.516

Achromatopsia
60, 0.008, 296.813

Achromatomaly
59, 24.843, 5.307

CSS Examples

Text

The CSS property to change the color of the text to CIELCh 62, 65.845, 11.516 is called "color". The color property can be set on classes, ids or directly on the HTML element.

This example shows how text in the color `rgb(255, 92, 130)` looks like.

```
.text, #text, p{  
    color:rgb(255, 92, 130)  
}
```

If you want to add a text shadow in that color use the text-shadow property, you can generate a text shadow directly with our [CSS Text Shadow Generator](#).

Here you see how black text with a 4 pixel rgb(255, 92, 130) colored shadow looks like.

```
.shadow{ text-shadow: 4px 4px 2px rgb(255, 92, 130) }
```

Border

The CSS property to change the border of an element to CIELCh 62, 65.845, 11.516 is called "border". The border property can be set on classes, ids or directly on the HTML element.

This example shows the color as border, it can be applied via the CSS property "border" or "border-color".

```
.border, #border, table{ border:4px solid rgb(255, 92, 130) }
```

If only the border color should be changed use the property `border-color`.

```
.border{ border-color:rgb(255, 92, 130) }
```

If you want to add a box shadow in that color use:

Here you see how a box with a 4 pixel `rgb(255, 92, 130)` colored shadow looks like.

```
.boxshadow{ -moz-box-shadow:4px 4px 4px 4px rgb(255, 92, 130); -webkit-box-shadow:4px 4px 4px 4px rgb(255, 92, 130); box-shadow:4px 4px 4px 4px rgb(255, 92, 130) }
```

Background

The CSS property to change the background color of an element to CIELCh 62, 65.845, 11.516 is called "background". The background property can be set on classes, ids or directly on the HTML element.

```
.background, #background, body{  
background: rgb(255, 92, 130) }
```

If only the background color should be changed can be used:

```
.background{ background-color: rgb(255, 92,  
130) }
```

This example shows the color as background, it is applied via the CSS property "background".

To optimize and compress your CSS code, you can use our [online CSS compressor and optimizer](#) based on csstidy. If you want to create a linear or radial gradient as background or border, check our [CSS Gradient Generator](#).

Hey! You found this booklet interesting? Support Converting Colors with the new Membership Option!

The pro membership hides all ads, plus gives you double the colors in the color bucket, and more awesome pro features!

[Learn more, Memberships starting at \\$2.50/m!](#)

**Follow me
on Twitter!**

@ConvertingColor