

Converting Colors

CIELCh(62, 65.912, 7.093)

Have a look what the booklet for
CIELCh(62, 65.912, 7.093) contains.

CIELCh(62, 65.842, 7.260)	3
<i>Conversions</i>	4
<i>Details</i>	6
<i>Harmonies</i>	11
<i>Previews</i>	20
<i>Color Blindness Simulation</i>	23
<i>CSS Examples</i>	26

Color

CIELCh(62, 65.842, 7.260)

Conversions

Conversions Part 1

Format	Color
Hex	FE5B8A
RGB	254, 91, 138
RGB Percent	100%, 36%, 54%
CMY	0.0038, 0.6430, 0.4587
CMYK	0.00, 0.64, 0.46, 0.00
HSL	343°, 99%, 68%
HSV	343°, 64%, 100%
XYZ	49.2213, 30.4025, 27.3311
YIQ	145.0950, 82.0610, 49.1730

Conversions

Conversions Part 2

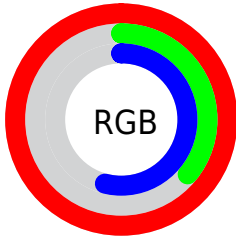
Format	Color
R_{YB}	254, 91, 138
Decimal	16669578
CIE _{Lab}	62.00, 65.31, 8.32
CIE _{LCh}	62, 65.842, 7.260
Yxy	30.4025, 0.4602, 0.2843
Android (android.graphics.Color)	4294859658 (0xFFFE5B8A)
YUV	145.0950, -3.4978, 95.5097
Hunter-Lab	55.1385, 62.8520, 9.2080

Details

The CIELCh color **62, 65.842, 7.260** is a light color, and the websafe version is hex **FF6699**. The color can be described as light muted rose. A complement of this color would be **91, 54.092, 169.243**, and the grayscale version is **60, 0.008, 296.813**.

A 20% lighter version of the original color is **74, 45.008, 354.456**, and **42, 65.752, 7.489** is the 20% darker color. If you saturate the color by 10%, you get **58, 74.114, 10.645**, and if you desaturate by 10%, it is **67, 56.286, 4.600**.

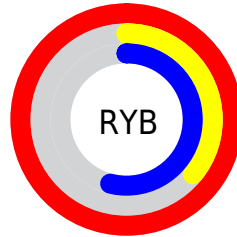
Distribution



Red (100%)

Green (36%)

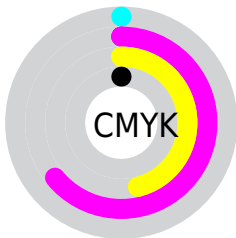
Blue (54%)



Red (100%)

Yellow (36%)

Blue (54%)

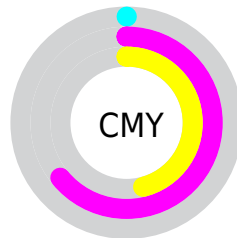


Cyan (0%)

Magenta (64%)

Yellow (46%)

Black (0%)



Cyan (0%)

Magenta (64%)

Yellow (46%)

Brightness & Saturation Gradients

These gradients show how the CIELCh color 62, 65.842, 7.260 changes by changing the brightness by 10 percent. The first figure shows a shift by +10% for each color and the second figure -10%.

Similar to the brightness gradients but the following saturation gradients show a change of the CIELCh color 62, 65.842, 7.260 by changing the saturation by 10% instead.

 62, 65.842, 7.260

 62, 65.842, 7.260

 100, 65.842, 7.260

 52, 65.842, 7.260

 82, 65.842, 7.260

 42, 65.842, 7.260

 92, 65.842, 7.260

 32, 65.842, 7.260

 22, 65.842, 7.260


 12, 65.842, 7.260

 2, 65.842, 7.260

 0, 65.842, 7.260

 62, 65.842, 7.260

 62, 65.842, 7.260

 58, 74.114, 10.645

 67, 56.286, 4.600

■ 56, 80.794, 14.910

■ 72, 45.935, 2.485

■ 54, 85.946, 20.106

■ 78, 35.243, 0.773

■ 54, 88.589, 23.393

■ 84, 24.562,
359.355

■ 90, 14.125,
358.148

■ 97, 4.064, 357.024

100, 0.334,
201.370

Harmonies

Complementary

The Complementary color scheme is a pair of colors which are on the opposite of each other on the color wheel.



62, 65.842, 7.260



91, 54.092, 169.243

Rectangle

The Rectangle color scheme consists of four colors that form a rectangle on the color wheel.



62, 65.842, 7.260



62, 65.842, 57.260



62, 65.842, 187.260



62, 65.842, 237.260

Sweetspot

The Sweet Spot groups the original color and five complimentary colors.



62, 65.838, 7.262



87, 19.194, 358.711



60, 92.907, 318.197



45, 13.281, 359.062



0, 0.000, 0.000



53, 0.007, 296.813

Same Dimension

The Same Dimension uses a secret algorithm to generate beautiful new colors.



62, 65.838, 7.262



58, 76.408, 11.767



67, 62.513, 40.901



50, 5.634, 357.633



40, 71.098, 22.314



10, 31.511, 13.555

Inverse Universe

The Inverse Universe completely reimagines the original color for something new.



62, 65.838, 7.262



58, 76.408, 11.767



83, 37.187, 225.378



50, 5.634, 357.633



40, 71.098, 22.314



10, 31.511, 13.555

Previews

White Background



This preview shows how the CIELCh color 62, 65.842, 7.260 looks on a white background.

Color Contrast Check

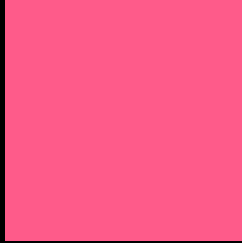
Large Text (above 18pt) WCAG AA × Fail

Any Text WCAG AA × Fail

Large Text (above 18pt) WCAG AAA × Fail

Any Text WCAG AAA × Fail

Black Background



This preview shows how the CIELCh color 62, 65.842, 7.260 looks on a black background.

Color Contrast Check

Large Text (above 18pt) WCAG AA ✓ Pass

Any Text WCAG AA ✓ Pass

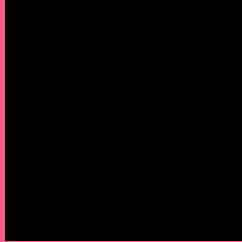
Large Text (above 18pt) WCAG AAA ✓ Pass

Any Text WCAG AAA ✓ Pass

If you want to check with other color combinations, try the [Color Contrast Checker](#).

CIELCh 62, 65.842, 7.260

Background



This preview shows how black text looks on a background with the CIELCh color 62, 65.842, 7.260.



This preview shows how white text looks on a background with the CIELCh color 62, 65.842, 7.260.

Color Blindness Simulation

Color vision deficiency is a very complex topic, and I could not describe the different causes any better than Wikipedia does, so if you want to learn more, you should check out their [article about color blindness](#).

Dichromacy



Original Color

62, 65.842, 7.260

Protanopia

62, 12.355, 288.171

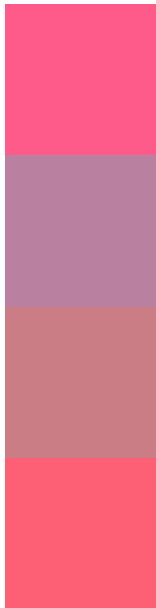
Deuteranopia

62, 14.046, 56.565



Tritanopia
62, 65.369, 25.277

Trichromacy



Original Color
62, 65.842, 7.260

Protanomaly
60, 28.151, 344.614

Deuteranomaly
61, 31.984, 15.170

Tritanomaly
62, 65.022, 18.795

Monochromacy



Original Color
62, 65.842, 7.260

Achromatopsia
60, 0.008, 296.813

Achromatomaly
59, 25.743, 0.771

CSS Examples

Text

The CSS property to change the color of the text to CIELCh 62, 65.842, 7.260 is called "color". The color property can be set on classes, ids or directly on the HTML element.

This example shows how text in the color `rgb(254, 91, 138)` looks like.

```
.text, #text, p{  
    color:rgb(254, 91, 138)  
}
```

If you want to add a text shadow in that color use the text-shadow property, you can generate a text shadow directly with our [CSS Text Shadow Generator](#).

Here you see how black text with a 4 pixel rgb(254, 91, 138) colored shadow looks like.

```
.shadow{ text-shadow: 4px 4px 2px rgb(254, 91, 138) }
```

Border

The CSS property to change the border of an element to CIELCh 62, 65.842, 7.260 is called "border". The border property can be set on classes, ids or directly on the HTML element.

This example shows the color as border, it can be applied via the CSS property "border" or "border-color".

```
.border, #border, table{ border:4px solid rgb(254, 91, 138) }
```

If only the border color should be changed use the property border-color.

```
.border{ border-color:rgb(254, 91, 138) }
```

If you want to add a box shadow in that color use:

Here you see how a box with a 4 pixel rgb(254, 91, 138) colored shadow looks like.

```
.boxshadow{ -moz-box-shadow:4px 4px 4px  
4px rgb(254, 91, 138); -webkit-box-  
shadow:4px 4px 4px 4px rgb(254, 91, 138);  
box-shadow:4px 4px 4px 4px rgb(254, 91,  
138) }
```

Background

The CSS property to change the background color of an element to CIELCh 62, 65.842, 7.260 is called "background". The background property can be set on classes, ids or directly on the HTML element.

```
.background, #background, body{  
background: rgb(254, 91, 138) }
```

If only the background color should be changed can be used:

```
.background{ background-color: rgb(254, 91,  
138) }
```

This example shows the color as background, it is applied via the CSS property "background".

To optimize and compress your CSS code, you can use our [online CSS compressor and optimizer](#) based on csstidy. If you want to create a linear or radial gradient as background or border, check our [CSS Gradient Generator](#).

Hey! You found this booklet interesting? Support Converting Colors with the new Membership Option!

The pro membership hides all ads, plus gives you double the colors in the color bucket, and more awesome pro features!

[Learn more, Memberships starting at \\$2.50/m!](#)

**Follow me
on Twitter!**

@ConvertingColor