

Converting Colors

CIELCh(62, 66.659, 17.405)

Have a look what the booklet for
CIELCh(62, 66.659, 17.405) contains.

CIELCh(62, 66.552, 17.242)	3
<i>Conversions</i>	4
<i>Details</i>	6
<i>Harmonies</i>	11
<i>Previews</i>	20
<i>Color Blindness Simulation</i>	23
<i>CSS Examples</i>	26

Color

CIELCh(62, 66.552, 17.242)

Conversions

Conversions Part 1

Format	Color
Hex	FF5C76
RGB	255, 92, 118
RGB Percent	100%, 36%, 46%
CMY	0.0000, 0.6374, 0.5357
CMYK	0.00, 0.64, 0.54, 0.00
HSL	350°, 100%, 68%
HSV	350°, 64%, 100%
XYZ	48.5795, 30.4025, 20.5683
YIQ	143.7010, 88.8020, 42.6420

Conversions

Conversions Part 2

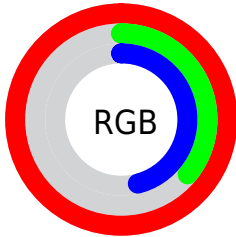
Format	Color
R _Y B	255, 92, 118
Decimal	16735350
CIE Lab	62.00, 63.56, 19.73
CIE LCh	62, 66.552, 17.242
Yxy	30.4025, 0.4880, 0.3054
Android (android.graphics.Color)	4294925430 (0xFFFF5C76)
YUV	143.7010, -12.6706, 97.6092
Hunter-Lab	55.1385, 60.7741, 16.4800

Details

The CIELCh color **62, 66.552, 17.242** is a light color, and the websafe version is hex **FF6666**. The color can be described as light muted rose. A complement of this color would be **91, 48.086, 180.099**, and the grayscale version is **60, 0.008, 296.813**.

A 20% lighter version of the original color is **73, 42.588, 8.717**, and **42, 66.451, 17.186** is the 20% darker color. If you saturate the color by 10%, you get **58, 76.150, 20.800**, and if you desaturate by 10%, it is **67, 55.804, 14.321**.

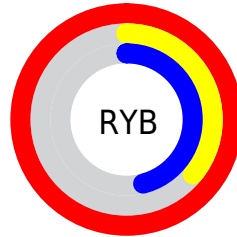
Distribution



Red (100%)

Green (36%)

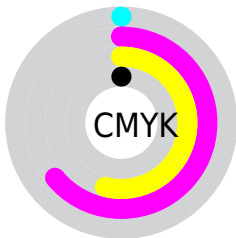
Blue (46%)



Red (100%)

Yellow (36%)

Blue (46%)

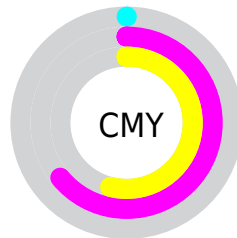


Cyan (0%)

Magenta (64%)

Yellow (54%)

Black (0%)



Cyan (0%)

Magenta (64%)

Yellow (54%)


Brightness & Saturation Gradients

These gradients show how the CIELCh color 62, 66.552, 17.242 changes by changing the brightness by 10 percent. The first figure shows a shift by +10% for each color and the second figure -10%.

Similar to the brightness gradients but the following saturation gradients show a change of the CIELCh color 62, 66.552, 17.242 by changing the saturation by 10% instead.

 62, 66.552, 17.242

 62, 66.552, 17.242

 100, 66.552,
17.242

 52, 66.552, 17.242

 82, 66.552, 17.242

 42, 66.552, 17.242

 92, 66.552, 17.242

 32, 66.552, 17.242

 22, 66.552, 17.242

 12, 66.552, 17.242

 2, 66.552, 17.242

 0, 66.552, 17.242

 62, 66.552, 17.242

 62, 66.552, 17.242

 58, 76.150, 20.800

 67, 55.804, 14.321

■ 55, 84.850, 25.231

■ 72, 44.868, 12.070

■ 54, 92.355, 30.284

■ 78, 33.940, 10.284

■ 53, 96.516, 33.400

■ 84, 23.300, 8.843

■ 91, 13.116, 7.648

■ 97, 3.469, 6.535

100, 0.012,
296.813

Harmonies

Complementary

The Complementary color scheme is a pair of colors which are on the opposite of each other on the color wheel.



62, 66.552, 17.242



91, 48.086, 180.099

Rectangle

The Rectangle color scheme consists of four colors that form a rectangle on the color wheel.



62, 66.552, 17.242



62, 66.552, 67.242



62, 66.552, 197.242



62, 66.552, 247.242

Sweetspot

The Sweet Spot groups the original color and five complimentary colors.



62, 66.367, 17.183



87, 18.408, 8.251



63, 93.295, 322.335



45, 12.769, 8.602



0, 0.000, 0.000



53, 0.007, 296.813

Same Dimension

The Same Dimension uses a secret algorithm to generate beautiful new colors.



62, 66.367, 17.183



57, 78.216, 21.731



71, 58.479, 51.733



50, 5.360, 7.190



40, 76.990, 32.458



10, 32.224, 20.614

Inverse Universe

The Inverse Universe completely reimagines the original color for something new.



62, 66.367, 17.183



57, 78.216, 21.731



77, 38.883, 247.095



50, 5.360, 7.190



40, 76.990, 32.458



10, 32.224, 20.614

Previews

White Background



This preview shows how the CIELCh color 62, 66.552, 17.242 looks on a white background.

Color Contrast Check

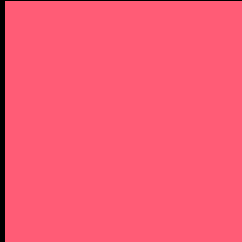
Large Text (above 18pt) WCAG AA × Fail

Any Text WCAG AA × Fail

Large Text (above 18pt) WCAG AAA × Fail

Any Text WCAG AAA × Fail

Black Background



This preview shows how the CIELCh color 62, 66.552, 17.242 looks on a black background.

Color Contrast Check

Large Text (above 18pt) WCAG AA ✓ Pass

Any Text WCAG AA ✓ Pass

Large Text (above 18pt) WCAG AAA ✓ Pass

Any Text WCAG AAA ✓ Pass

If you want to check with other color combinations, try the [Color Contrast Checker](#).

CIELCh 62, 66.552, 17.242

Background



This preview shows how black text looks on a background with the CIELCh color 62, 66.552, 17.242.



This preview shows how white text looks on a background with the CIELCh color 62, 66.552, 17.242.

Color Blindness Simulation

Color vision deficiency is a very complex topic, and I could not describe the different causes any better than Wikipedia does, so if you want to learn more, you should check out their [article about color blindness](#).

Dichromacy



Original Color

62, 66.552, 17.242

Protanopia

62, 2.279, 66.675

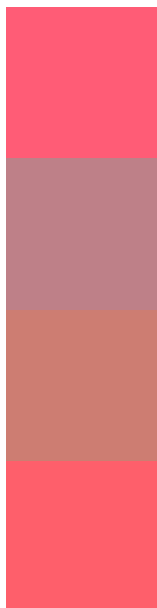
Deuteranopia

62, 23.532, 70.829



Tritanopia
62, 67.281, 26.119

Trichromacy



Original Color
62, 66.552, 17.242

Protanomaly
60, 25.684, 12.353

Deuteranomaly
61, 35.469, 32.796

Tritanomaly
62, 66.570, 23.114

Monochromacy



Original Color
62, 66.552, 17.242

Achromatopsia
60, 0.008, 296.813

Achromatomaly
59, 24.645, 9.165

CSS Examples

Text

The CSS property to change the color of the text to CIELCh 62, 66.552, 17.242 is called "color". The color property can be set on classes, ids or directly on the HTML element.

This example shows how text in the color `rgb(255, 92, 118)` looks like.

```
.text, #text, p{  
    color:rgb(255, 92, 118)  
}
```

If you want to add a text shadow in that color use the text-shadow property, you can generate a text shadow directly with our [CSS Text Shadow Generator](#).

Here you see how black text with a 4 pixel rgb(255, 92, 118) colored shadow looks like.

```
.shadow{ text-shadow: 4px 4px 2px rgb(255, 92, 118) }
```

Border

The CSS property to change the border of an element to CIELCh 62, 66.552, 17.242 is called "border". The border property can be set on classes, ids or directly on the HTML element.

This example shows the color as border, it can be applied via the CSS property "border" or "border-color".

```
.border, #border, table{ border:4px solid rgb(255, 92, 118) }
```

If only the border color should be changed use the property `border-color`.

```
.border{ border-color:rgb(255, 92, 118) }
```

If you want to add a box shadow in that color use:

Here you see how a box with a 4 pixel `rgb(255, 92, 118)` colored shadow looks like.

```
.boxshadow{ -moz-box-shadow:4px 4px 4px  
4px rgb(255, 92, 118); -webkit-box-  
shadow:4px 4px 4px 4px rgb(255, 92, 118);  
box-shadow:4px 4px 4px 4px rgb(255, 92,  
118) }
```

Background

The CSS property to change the background color of an element to CIELCh 62, 66.552, 17.242 is called "background". The background property can be set on classes, ids or directly on the HTML element.

```
.background, #background, body{  
background: rgb(255, 92, 118) }
```

If only the background color should be changed can be used:

```
.background{ background-color: rgb(255, 92,  
118) }
```

This example shows the color as background, it is applied via the CSS property "background".

To optimize and compress your CSS code, you can use our [online CSS compressor and optimizer](#) based on csstidy. If you want to create a linear or radial gradient as background or border, check our [CSS Gradient Generator](#).

Hey! You found this booklet interesting? Support Converting Colors with the new Membership Option!

The pro membership hides all ads, plus gives you double the colors in the color bucket, and more awesome pro features!

[Learn more, Memberships starting at \\$2.50/m!](#)

**Follow me
on Twitter!**

@ConvertingColor