

Converting Colors

CIELCh(62, 66.673, 5.321)

Have a look what the booklet for
CIELCh(62, 66.673, 5.321) contains.

CIELCh(62, 66.660, 5.330)	3
<i>Conversions</i>	4
<i>Details</i>	6
<i>Harmonies</i>	11
<i>Previews</i>	20
<i>Color Blindness Simulation</i>	23
<i>CSS Examples</i>	26

Color

CIELCh(62, 66.660, 5.330)

Conversions

Conversions Part 1

Format	Color
Hex	FF5A8E
RGB	255, 90, 142
RGB Percent	100%, 35%, 56%
CMY	0.0013, 0.6482, 0.4442
CMYK	0.00, 0.65, 0.44, 0.00
HSL	341°, 100%, 68%
HSV	341°, 65%, 100%
XYZ	49.6113, 30.4025, 28.7379
YIQ	145.2630, 81.6480, 51.1520

Conversions

Conversions Part 2

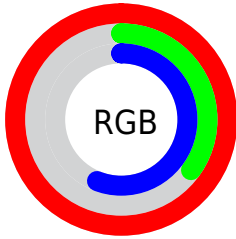
Format	Color
R _{YB}	255, 90, 142
Decimal	16734862
CIE Lab	62.00, 66.37, 6.19
CIE LCh	62, 66.660, 5.330
Yxy	30.4025, 0.4562, 0.2796
Android (android.graphics.Color)	4294924942 (0xFFFF5A8E)
YUV	145.2630, -1.6087, 96.2393
Hunter-Lab	55.1385, 64.1145, 7.6953

Details

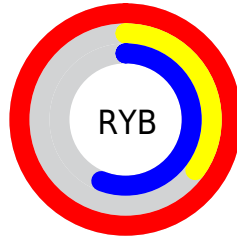
The CIELCh color **62, 66.660, 5.330** is a light color, and the websafe version is hex **FF6699**. The color can be described as light muted rose. A complement of this color would be **91, 56.013, 167.163**, and the grayscale version is **60, 0.008, 296.813**.

A 20% lighter version of the original color is **74, 46.338, 351.702**, and **42, 66.649, 5.337** is the 20% darker color. If you saturate the color by 10%, you get **58, 74.611, 8.657**, and if you desaturate by 10%, it is **67, 57.295, 2.715**.

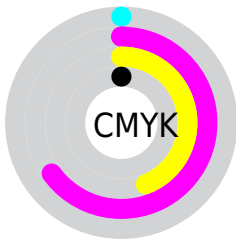
Distribution



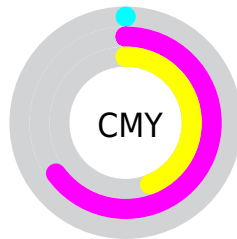
- Red (100%)
- Green (35%)
- Blue (56%)



- Red (100%)
- Yellow (35%)
- Blue (56%)



- Cyan (0%)
- Magenta (65%)
- Yellow (44%)
- Black (0%)



- Cyan (0%)
- Magenta (65%)
- Yellow (44%)

Brightness & Saturation Gradients

These gradients show how the CIELCh color 62, 66.660, 5.330 changes by changing the brightness by 10 percent. The first figure shows a shift by +10% for each color and the second figure -10%.

Similar to the brightness gradients but the following saturation gradients show a change of the CIELCh color 62, 66.660, 5.330 by changing the saturation by 10% instead.

 62, 66.660, 5.330

 62, 66.660, 5.330

 100, 66.660, 5.330

 52, 66.660, 5.330

 82, 66.660, 5.330

 42, 66.660, 5.330

 92, 66.660, 5.330

 32, 66.660, 5.330

 22, 66.660, 5.330

 12, 66.660, 5.330

 2, 66.660, 5.330

 0, 66.660, 5.330

 62, 66.660, 5.330

 62, 66.660, 5.330

 58, 74.611, 8.657

 67, 57.295, 2.715

■ 56, 80.842, 12.863

■ 72, 47.021, 0.632

■ 54, 85.438, 18.019

■ 78, 36.315,
358.941

■ 54, 87.523, 20.943

■ 84, 25.551,
357.535

■ 90, 14.980,
356.333

■ 97, 4.750, 355.228

100, 0.114,
205.234

Harmonies

Complementary

The Complementary color scheme is a pair of colors which are on the opposite of each other on the color wheel.



62, 66.660, 5.330



91, 56.013, 167.163

Rectangle

The Rectangle color scheme consists of four colors that form a rectangle on the color wheel.



62, 66.660, 5.330



62, 66.660, 55.330



62, 66.660, 185.330



62, 66.660, 235.330

Sweetspot

The Sweet Spot groups the original color and five complimentary colors.



62, 66.656, 5.332



87, 19.427, 356.820



59, 93.807, 317.697



45, 13.436, 357.166



0, 0.000, 0.000



53, 0.007, 296.813

Same Dimension

The Same Dimension uses a secret algorithm to generate beautiful new colors.



62, 66.656, 5.332



57, 76.891, 9.911



66, 63.979, 39.766



50, 5.710, 355.754



40, 70.181, 19.860



10, 31.403, 11.650

Inverse Universe

The Inverse Universe completely reimagines the original color for something new.



62, 66.656, 5.332



57, 76.891, 9.911



83, 37.605, 222.770



50, 5.710, 355.754



40, 70.181, 19.860



10, 31.403, 11.650

Previews

White Background



This preview shows how the CIELCh color 62, 66.660, 5.330 looks on a white background.

Color Contrast Check

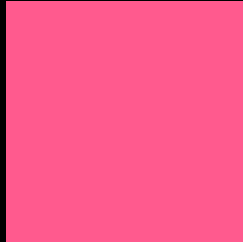
Large Text (above 18pt) WCAG AA × Fail

Any Text WCAG AA × Fail

Large Text (above 18pt) WCAG AAA × Fail

Any Text WCAG AAA × Fail

Black Background



This preview shows how the CIELCh color 62, 66.660, 5.330 looks on a black background.

Color Contrast Check

Large Text (above 18pt) WCAG AA ✓ Pass

Any Text WCAG AA ✓ Pass

Large Text (above 18pt) WCAG AAA ✓ Pass

Any Text WCAG AAA ✓ Pass

If you want to check with other color combinations, try the [Color Contrast Checker](#).

CIELCh 62, 66.660, 5.330

Background



This preview shows how black text looks on a background with the CIELCh color 62, 66.660, 5.330.

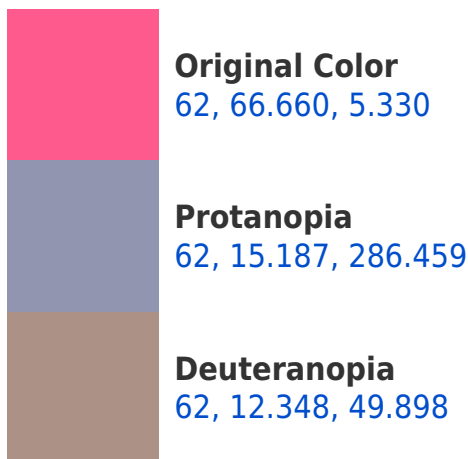


This preview shows how white text looks on a background with the CIELCh color 62, 66.660, 5.330.

Color Blindness Simulation

Color vision deficiency is a very complex topic, and I could not describe the different causes any better than Wikipedia does, so if you want to learn more, you should check out their [article about color blindness](#).

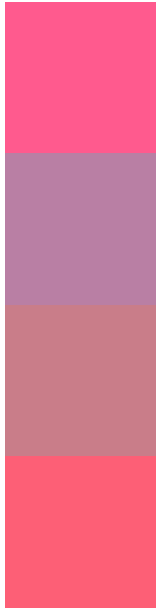
Dichromacy





Tritanopia
62, 65.369, 25.277

Trichromacy



Original Color
62, 66.660, 5.330

Protanomaly
60, 30.124, 339.352

Deuteranomaly
61, 31.591, 10.996

Tritanomaly
62, 64.822, 17.833

Monochromacy



Original Color
62, 66.660, 5.330

Achromatopsia
60, 0.008, 296.813

Achromatomaly
59, 26.054, 358.408

CSS Examples

Text

The CSS property to change the color of the text to CIELCh 62, 66.660, 5.330 is called "color". The color property can be set on classes, ids or directly on the HTML element.

This example shows how text in the color `rgb(255, 90, 142)` looks like.

```
.text, #text, p{  
    color:rgb(255, 90, 142)  
}
```

If you want to add a text shadow in that color use the text-shadow property, you can generate a text shadow directly with our [CSS Text Shadow Generator](#).

Here you see how black text with a 4 pixel rgb(255, 90, 142) colored shadow looks like.

```
.shadow{ text-shadow: 4px 4px 2px rgb(255, 90, 142) }
```

Border

The CSS property to change the border of an element to CIELCh 62, 66.660, 5.330 is called "border". The border property can be set on classes, ids or directly on the HTML element.

This example shows the color as border, it can be applied via the CSS property "border" or "border-color".

```
.border, #border, table{ border:4px solid rgb(255, 90, 142) }
```

If only the border color should be changed use the property `border-color`.

```
.border{ border-color:rgb(255, 90, 142) }
```

If you want to add a box shadow in that color use:

Here you see how a box with a 4 pixel `rgb(255, 90, 142)` colored shadow looks like.

```
.boxshadow{ -moz-box-shadow:4px 4px 4px  
4px rgb(255, 90, 142); -webkit-box-  
shadow:4px 4px 4px 4px rgb(255, 90, 142);  
box-shadow:4px 4px 4px 4px rgb(255, 90,  
142) }
```

Background

The CSS property to change the background color of an element to CIELCh 62, 66.660, 5.330 is called "background". The background property can be set on classes, ids or directly on the HTML element.

```
.background, #background, body{  
background: rgb(255, 90, 142) }
```

If only the background color should be changed can be used:

```
.background{ background-color: rgb(255, 90,  
142) }
```

This example shows the color as background, it is applied via the CSS property "background".

To optimize and compress your CSS code, you can use our [online CSS compressor and optimizer](#) based on csstidy. If you want to create a linear or radial gradient as background or border, check our [CSS Gradient Generator](#).

Hey! You found this booklet interesting? Support Converting Colors with the new Membership Option!

The pro membership hides all ads, plus gives you double the colors in the color bucket, and more awesome pro features!

[Learn more, Memberships starting at \\$2.50/m!](#)

**Follow me
on Twitter!**

@ConvertingColor