

Converting Colors

CIELCh(62, 66.878, 1.259)

Have a look what the booklet for
CIELCh(62, 66.878, 1.259) contains.

CIELCh(62, 66.563, 1.170)	3
<i>Conversions</i>	4
<i>Details</i>	6
<i>Harmonies</i>	11
<i>Previews</i>	20
<i>Color Blindness Simulation</i>	23
<i>CSS Examples</i>	26

Color

CIELCh(62, 66.563, 1.170)

Conversions

Conversions Part 1

Format	Color
Hex	FD5A96
RGB	253, 90, 150
RGB Percent	99%, 35%, 59%
CMY	0.0078, 0.6470, 0.4117
CMYK	0.00, 0.64, 0.41, 0.01
HSL	338°, 98%, 67%
HSV	338°, 64%, 99%
XYZ	49.6769, 30.4025, 32.1096
YIQ	145.5770, 77.8880, 53.2160

Conversions

Conversions Part 2

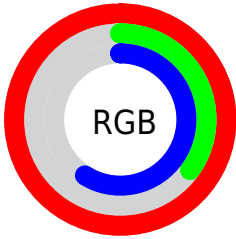
Format	Color
R_{YB}	253, 90, 150
Decimal	16603798
CIE _{Lab}	62.00, 66.55, 1.36
CIE _{LCh}	62, 66.563, 1.170
Yxy	30.4025, 0.4428, 0.2710
Android (android.graphics.Color)	4294793878 (0xFFFD5A96)
YUV	145.5770, 2.1805, 94.2100
Hunter-Lab	55.1385, 64.3268, 4.0697

Details

The CIELCh color **62, 66.563, 1.170** is a light color, and the websafe version is hex **FF6699**. The color can be described as light muted rose. A complement of this color would be **90, 58.367, 163.648**, and the grayscale version is **60, 0.008, 296.813**.

A 20% lighter version of the original color is **74, 48.453, 346.575**, and **42, 66.691, 1.506** is the 20% darker color. If you saturate the color by 10%, you get **58, 74.149, 4.218**, and if you desaturate by 10%, it is **67, 57.408, 358.768**.

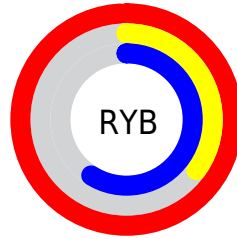
Distribution



Red (99%)

Green (35%)

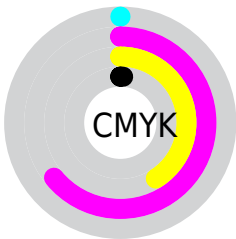
Blue (59%)



Red (99%)

Yellow (35%)

Blue (59%)

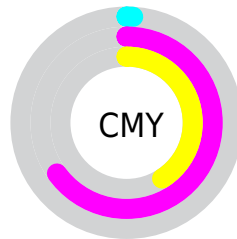


Cyan (0%)

Magenta (64%)

Yellow (41%)

Black (1%)



Cyan (1%)


Magenta (65%)

Yellow (41%)

Brightness & Saturation Gradients

These gradients show how the CIELCh color 62, 66.563, 1.170 changes by changing the brightness by 10 percent. The first figure shows a shift by +10% for each color and the second figure -10%.

Similar to the brightness gradients but the following saturation gradients show a change of the CIELCh color 62, 66.563, 1.170 by changing the saturation by 10% instead.

 62, 66.563, 1.170  62, 66.563, 1.170

 100, 66.563, 1.170  52, 66.563, 1.170

 82, 66.563, 1.170  42, 66.563, 1.170

 92, 66.563, 1.170  32, 66.563, 1.170

 22, 66.563, 1.170

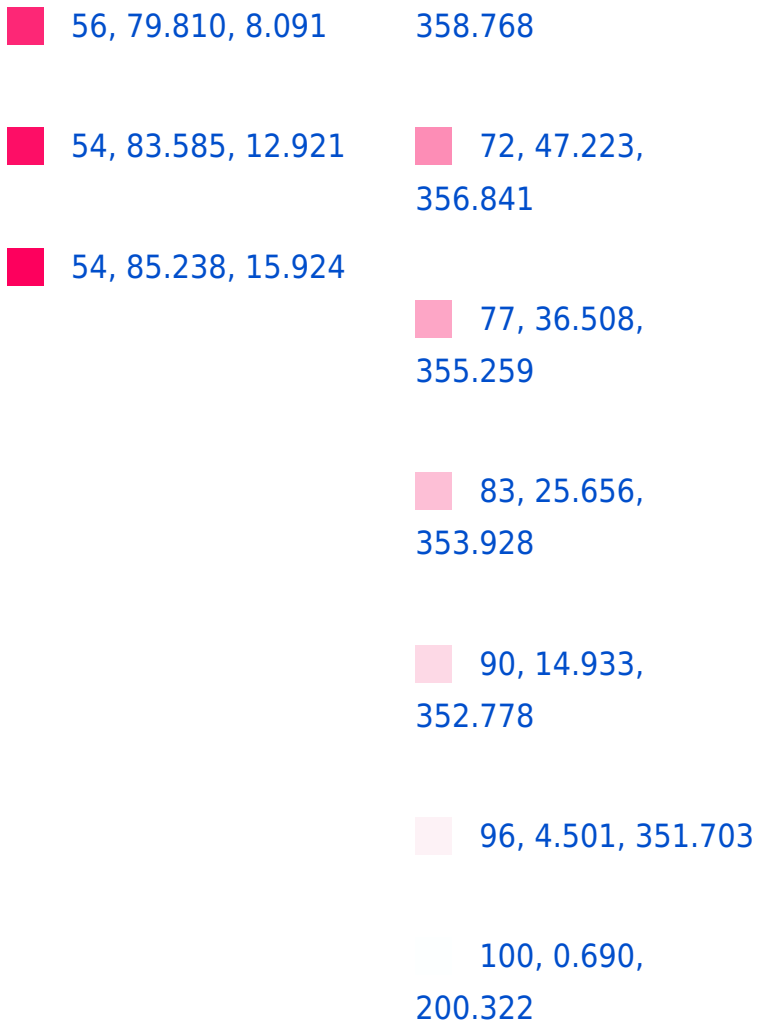
 12, 66.563, 1.170

 2, 66.563, 1.170

 0, 66.563, 1.170

 62, 66.563, 1.170  62, 66.563, 1.170

 58, 74.149, 4.218  67, 57.408,



Harmonies

Complementary

The Complementary color scheme is a pair of colors which are on the opposite of each other on the color wheel.



62, 66.563, 1.170



90, 58.367, 163.648

Rectangle

The Rectangle color scheme consists of four colors that form a rectangle on the color wheel.



62, 66.563, 1.170



62, 66.563, 51.170



62, 66.563, 181.170



62, 66.563, 231.170

Sweetspot

The Sweet Spot groups the original color and five complimentary colors.



62, 66.559, 1.172



88, 19.942, 353.287



57, 92.757, 315.680



45, 13.780, 353.620



0, 0.000, 0.000



53, 0.007, 296.813

Same Dimension

The Same Dimension uses a secret algorithm to generate beautiful new colors.



62, 66.559, 1.172



58, 76.272, 5.143



64, 65.791, 35.297



50, 5.877, 352.256



41, 68.838, 14.898



10, 31.286, 7.512

Inverse Universe

The Inverse Universe completely reimagines the original color for something new.



62, 66.559, 1.172



58, 76.272, 5.143



86, 38.595, 212.262



50, 5.877, 352.256



41, 68.838, 14.898



10, 31.286, 7.512

Previews

White Background



This preview shows how the CIELCh color 62, 66.563, 1.170 looks on a white background.

Color Contrast Check

Large Text (above 18pt) WCAG AA × Fail

Any Text WCAG AA × Fail

Large Text (above 18pt) WCAG AAA × Fail

Any Text WCAG AAA × Fail

Black Background



This preview shows how the CIELCh color 62, 66.563, 1.170 looks on a black background.

Color Contrast Check

Large Text (above 18pt) WCAG AA ✓ Pass

Any Text WCAG AA ✓ Pass

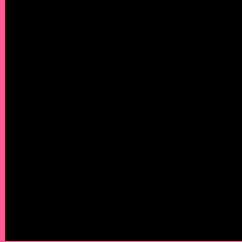
Large Text (above 18pt) WCAG AAA ✓ Pass

Any Text WCAG AAA ✓ Pass

If you want to check with other color combinations, try the [Color Contrast Checker](#).

CIELCh 62, 66.563, 1.170

Background



This preview shows how black text looks on a background with the CIELCh color 62, 66.563, 1.170.

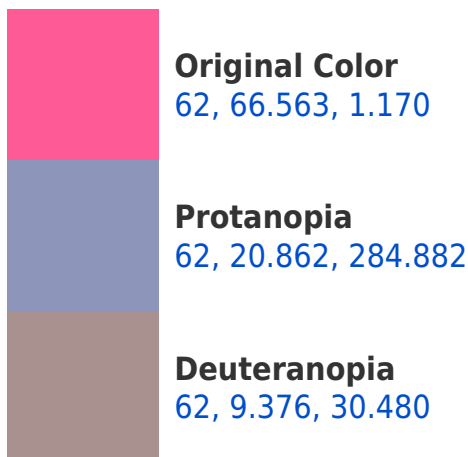


This preview shows how white text looks on a background with the CIELCh color 62, 66.563, 1.170.

Color Blindness Simulation

Color vision deficiency is a very complex topic, and I could not describe the different causes any better than Wikipedia does, so if you want to learn more, you should check out their [article about color blindness](#).

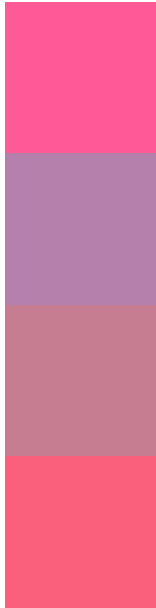
Dichromacy





Tritanopia
62, 63.631, 24.876

Trichromacy



Original Color
62, 66.563, 1.170

Protanomaly
60, 32.169, 331.208

Deuteranomaly
61, 31.387, 2.475

Tritanomaly
62, 63.401, 15.911

Monochromacy



Original Color
62, 66.563, 1.170

Achromatopsia
61, 0.008, 296.813

Achromatomaly
59, 26.027, 355.632

CSS Examples

Text

The CSS property to change the color of the text to CIELCh 62, 66.563, 1.170 is called "color". The color property can be set on classes, ids or directly on the HTML element.

This example shows how text in the color `rgb(253, 90, 150)` looks like.

```
.text, #text, p{  
    color:rgb(253, 90, 150)  
}
```

If you want to add a text shadow in that color use the text-shadow property, you can generate a text shadow directly with our [CSS Text Shadow Generator](#).

Here you see how black text with a 4 pixel rgb(253, 90, 150) colored shadow looks like.

```
.shadow{ text-shadow: 4px 4px 2px rgb(253, 90, 150) }
```

Border

The CSS property to change the border of an element to CIELCh 62, 66.563, 1.170 is called "border". The border property can be set on classes, ids or directly on the HTML element.

This example shows the color as border, it can be applied via the CSS property "border" or "border-color".

```
.border, #border, table{ border:4px solid rgb(253, 90, 150) }
```

If only the border color should be changed use the property `border-color`.

```
.border{ border-color:rgb(253, 90, 150) }
```

If you want to add a box shadow in that color use:

Here you see how a box with a 4 pixel `rgb(253, 90, 150)` colored shadow looks like.

```
.boxshadow{ -moz-box-shadow:4px 4px 4px  
4px rgb(253, 90, 150); -webkit-box-  
shadow:4px 4px 4px 4px rgb(253, 90, 150);  
box-shadow:4px 4px 4px 4px rgb(253, 90,  
150) }
```

Background

The CSS property to change the background color of an element to CIELCh 62, 66.563, 1.170 is called "background". The background property can be set on classes, ids or directly on the HTML element.

```
.background, #background, body{  
background: rgb(253, 90, 150) }
```

If only the background color should be changed can be used:

```
.background{ background-color: rgb(253, 90,  
150) }
```

This example shows the color as background, it is applied via the CSS property "background".

To optimize and compress your CSS code, you can use our [online CSS compressor and optimizer](#) based on csstidy. If you want to create a linear or radial gradient as background or border, check our [CSS Gradient Generator](#).

Hey! You found this booklet interesting? Support Converting Colors with the new Membership Option!

The pro membership hides all ads, plus gives you double the colors in the color bucket, and more awesome pro features!

[Learn more, Memberships starting at \\$2.50/m!](#)

**Follow me
on Twitter!**

@ConvertingColor