

Converting Colors

CIELCh(62, 68.510, 1.782)

Have a look what the booklet for
CIELCh(62, 68.510, 1.782) contains.

CIELCh(62, 68.217, 1.504)	3
<i>Conversions</i>	4
<i>Details</i>	6
<i>Harmonies</i>	11
<i>Previews</i>	20
<i>Color Blindness Simulation</i>	23
<i>CSS Examples</i>	26

Color

CIELCh(62, 68.217, 1.504)

Conversions

Conversions Part 1

Format	Color
Hex	FF5795
RGB	255, 87, 149
RGB Percent	100%, 34%, 58%
CMY	0.0000, 0.6572, 0.4143
CMYK	0.00, 0.66, 0.41, 0.00
HSL	338°, 100%, 67%
HSV	338°, 66%, 100%
XYZ	50.2879, 30.4025, 31.7985
YIQ	144.3000, 80.2260, 54.8980

Conversions

Conversions Part 2

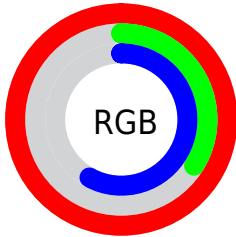
Format	Color
R _Y B	255, 87, 149
Decimal	16734101
CIE _{Lab}	62.00, 68.19, 1.79
CIE _{LCh}	62, 68.217, 1.504
Y _{xy}	30.4025, 0.4470, 0.2703
Android (android.graphics.Color)	4294924181 (0xFFFF5795)
YUV	144.3000, 2.3171, 97.0839
Hunter-Lab	55.1385, 66.3046, 4.4042

Details

The CIELCh color **62, 68.217, 1.504** is a light color, and the websafe version is hex **FF6699**. The color can be described as light muted rose. A complement of this color would be **91, 59.722, 163.324**, and the grayscale version is **60, 0.008, 296.813**.

A 20% lighter version of the original color is **74, 49.315, 346.701**, and **42, 68.179, 1.212** is the 20% darker color. If you saturate the color by 10%, you get **58, 75.475, 4.557**, and if you desaturate by 10%, it is **66, 59.065, 358.945**.

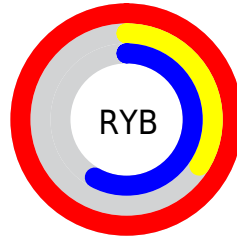
Distribution



Red (100%)

Green (34%)

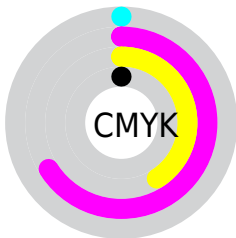
Blue (58%)



Red (100%)

Yellow (34%)

Blue (58%)

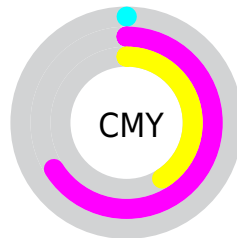


Cyan (0%)

Magenta (66%)

Yellow (41%)

Black (0%)



Cyan (0%)

Magenta (66%)

Yellow (41%)

Brightness & Saturation Gradients

These gradients show how the CIELCh color 62, 68.217, 1.504 changes by changing the brightness by 10 percent. The first figure shows a shift by +10% for each color and the second figure -10%.

Similar to the brightness gradients but the following saturation gradients show a change of the CIELCh color 62, 68.217, 1.504 by changing the saturation by 10% instead.

 62, 68.217, 1.504  62, 68.217, 1.504

 100, 68.217, 1.504  52, 68.217, 1.504

 82, 68.217, 1.504  42, 68.217, 1.504

 92, 68.217, 1.504  32, 68.217, 1.504

 22, 68.217, 1.504

 12, 68.217, 1.504

 2, 68.217, 1.504

 0, 68.217, 1.504

 62, 68.217, 1.504  62, 68.217, 1.504

 58, 75.475, 4.557  66, 59.065,

■ 56, 80.888, 8.545

358.945

■ 54, 84.443, 13.495

■ 71, 48.923,
356.967

■ 54, 85.709, 15.801

■ 77, 38.183,
355.348

■ 83, 27.257,
353.990

■ 90, 16.431,
352.821

■ 96, 5.879, 351.755

100, 0.012,
296.813

Harmonies

Complementary

The Complementary color scheme is a pair of colors which are on the opposite of each other on the color wheel.



62, 68.217, 1.504



91, 59.722, 163.324

Rectangle

The Rectangle color scheme consists of four colors that form a rectangle on the color wheel.



62, 68.217, 1.504



62, 68.217, 51.504



62, 68.217, 181.504



62, 68.217, 231.504

Sweetspot

The Sweet Spot groups the original color and five complimentary colors.



62, 68.090, 1.418



87, 21.039, 353.303



57, 94.985, 315.705



44, 14.409, 353.634



0, 0.000, 0.000



53, 0.007, 296.813

Same Dimension

The Same Dimension uses a secret algorithm to generate beautiful new colors.



62, 68.090, 1.418



57, 77.473, 5.763



64, 67.800, 35.534



50, 5.882, 352.158



41, 68.809, 14.751



10, 31.285, 7.384

Inverse Universe

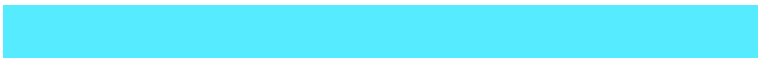
The Inverse Universe completely reimagines the original color for something new.



62, 68.090, 1.418



57, 77.473, 5.763



86, 39.247, 212.397



50, 5.882, 352.158



41, 68.809, 14.751



10, 31.285, 7.384

Previews

White Background



This preview shows how the CIELCh color 62, 68.217, 1.504 looks on a white background.

Color Contrast Check

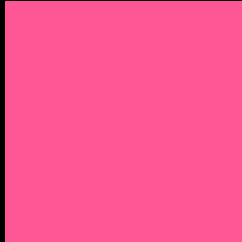
Large Text (above 18pt) WCAG AA × Fail

Any Text WCAG AA × Fail

Large Text (above 18pt) WCAG AAA × Fail

Any Text WCAG AAA × Fail

Black Background



This preview shows how the CIELCh color 62, 68.217, 1.504 looks on a black background.

Color Contrast Check

Large Text (above 18pt) WCAG AA ✓ Pass

Any Text WCAG AA ✓ Pass

Large Text (above 18pt) WCAG AAA ✓ Pass

Any Text WCAG AAA ✓ Pass

If you want to check with other color combinations, try the [Color Contrast Checker](#).

CIELCh 62, 68.217, 1.504

Background



This preview shows how black text looks on a background with the CIELCh color 62, 68.217, 1.504.

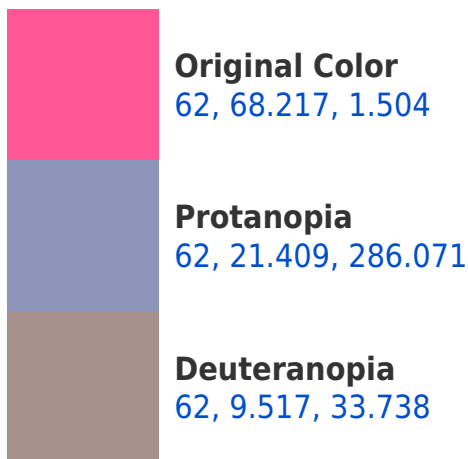


This preview shows how white text looks on a background with the CIELCh color 62, 68.217, 1.504.

Color Blindness Simulation

Color vision deficiency is a very complex topic, and I could not describe the different causes any better than Wikipedia does, so if you want to learn more, you should check out their [article about color blindness](#).

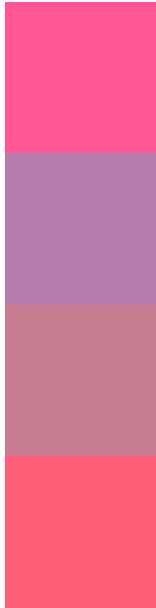
Dichromacy





Tritanopia
62, 65.666, 24.954

Trichromacy



Original Color
62, 68.217, 1.504

Protanomaly
60, 33.484, 331.070

Deuteranomaly
61, 32.174, 3.130

Tritanomaly
62, 64.978, 16.582

Monochromacy



Original Color
62, 68.217, 1.504

Achromatopsia
60, 0.008, 296.813

Achromatomaly
59, 27.193, 354.367

CSS Examples

Text

The CSS property to change the color of the text to CIELCh 62, 68.217, 1.504 is called "color". The color property can be set on classes, ids or directly on the HTML element.

This example shows how text in the color `rgb(255, 87, 149)` looks like.

```
.text, #text, p{  
    color:rgb(255, 87, 149)  
}
```

If you want to add a text shadow in that color use the text-shadow property, you can generate a text shadow directly with our [CSS Text Shadow Generator](#).

Here you see how black text with a 4 pixel rgb(255, 87, 149) colored shadow looks like.

```
.shadow{ text-shadow: 4px 4px 2px rgb(255, 87, 149) }
```

Border

The CSS property to change the border of an element to CIELCh 62, 68.217, 1.504 is called "border". The border property can be set on classes, ids or directly on the HTML element.

This example shows the color as border, it can be applied via the CSS property "border" or "border-color".

```
.border, #border, table{ border:4px solid rgb(255, 87, 149) }
```

If only the border color should be changed use the property border-color.

```
.border{ border-color:rgb(255, 87, 149) }
```

If you want to add a box shadow in that color use:

Here you see how a box with a 4 pixel rgb(255, 87, 149) colored shadow looks like.

```
.boxshadow{ -moz-box-shadow:4px 4px 4px  
4px rgb(255, 87, 149); -webkit-box-  
shadow:4px 4px 4px 4px rgb(255, 87, 149);  
box-shadow:4px 4px 4px 4px rgb(255, 87,  
149) }
```

Background

The CSS property to change the background color of an element to CIELCh 62, 68.217, 1.504 is called "background". The background property can be set on classes, ids or directly on the HTML element.

```
.background, #background, body{  
background: rgb(255, 87, 149) }
```

If only the background color should be changed can be used:

```
.background{ background-color: rgb(255, 87,  
149) }
```

This example shows the color as background, it is applied via the CSS property "background".

To optimize and compress your CSS code, you can use our [online CSS compressor and optimizer](#) based on csstidy. If you want to create a linear or radial gradient as background or border, check our [CSS Gradient Generator](#).

Hey! You found this booklet interesting? Support Converting Colors with the new Membership Option!

The pro membership hides all ads, plus gives you double the colors in the color bucket, and more awesome pro features!

[Learn more, Memberships starting at \\$2.50/m!](#)

**Follow me
on Twitter!**

@ConvertingColor