

Converting Colors

CIELCh(62, 81.017, 10.275)

Have a look what the booklet for
CIELCh(62, 81.017, 10.275) contains.

CIELCh(58, 75.051, 6.948)	3
<i>Conversions</i>	4
<i>Details</i>	6
<i>Harmonies</i>	11
<i>Previews</i>	20
<i>Color Blindness Simulation</i>	23
<i>CSS Examples</i>	26

Color

CIELCh(58, 75.051, 6.948)

Conversions

Conversions Part 1

Format	Color
Hex	FE3E7F
RGB	254, 62, 127
RGB Percent	100%, 24%, 50%
CMY	0.0049, 0.7583, 0.5019
CMYK	0.00, 0.76, 0.50, 0.00
HSL	340°, 99%, 62%
HSV	340°, 76%, 100%
XYZ	46.3178, 25.9610, 22.6520
YIQ	126.8180, 93.5670, 60.9190

Conversions

Conversions Part 2

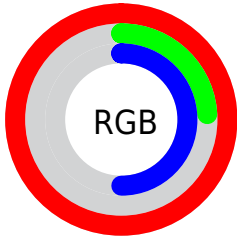
Format	Color
RYB	254, 62, 127
Decimal	16662143
CIELab	58.00, 74.50, 9.08
CIELCh	58, 75.051, 6.948
Yxy	25.9610, 0.4879, 0.2735
Android (android.graphics.Color)	4294852223 (0xFFFE3E7F)
YUV	126.8180, 0.0897, 111.5386
Hunter-Lab	50.9519, 73.0994, 9.3074

Details

The CIELCh color **58, 75.051, 6.948** is a dark color, and the websafe version is hex **FF3366**. The color can be described as middle washed rose. A complement of this color would be **90, 63.873, 163.485**, and the grayscale version is **53, 0.007, 296.813**.

A 20% lighter version of the original color is **69, 55.287, 354.772**, and **41, 68.164, 10.989** is the 20% darker color. If you saturate the color by 10%, you get **56, 80.781, 11.111**, and if you desaturate by 10%, it is **62, 67.473, 3.665**.

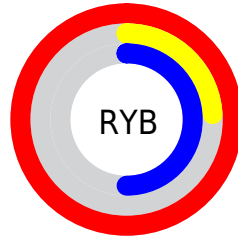
Distribution



Red (100%)

Green (24%)

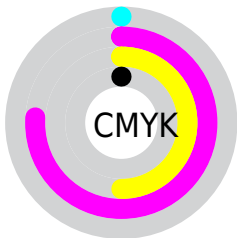
Blue (50%)



Red (100%)

Yellow (24%)

Blue (50%)

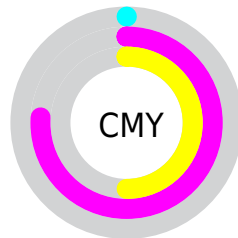


Cyan (0%)

Magenta (76%)

Yellow (50%)

Black (0%)



Cyan (0%)


Magenta (76%)

Yellow (50%)

Brightness & Saturation Gradients

These gradients show how the CIELCh color 58, 75.051, 6.948 changes by changing the brightness by 10 percent. The first figure shows a shift by +10% for each color and the second figure -10%.

Similar to the brightness gradients but the following saturation gradients show a change of the CIELCh color 58, 75.051, 6.948 by changing the saturation by 10% instead.

 58, 75.051, 6.948  58, 75.051, 6.948

 100, 75.051, 6.948  48, 75.051, 6.948


 78, 75.051, 6.948  38, 75.051, 6.948

 88, 75.051, 6.948  28, 75.051, 6.948

 98, 75.051, 6.948  18, 75.051, 6.948

 8, 75.051, 6.948

 0, 75.051, 6.948

 58, 75.051, 6.948  58, 75.051, 6.948

 56, 80.781, 11.111  62, 67.473, 3.665

 54, 84.805, 16.232  66, 58.367, 1.080

■ 54, 86.310, 18.596

■ 71, 48.232,
359.020

■ 77, 37.567,
357.343

■ 83, 26.769,
355.945

■ 89, 16.109,
354.749

■ 96, 5.753, 353.662

100, 0.431,
200.915

Harmonies

Complementary

The Complementary color scheme is a pair of colors which are on the opposite of each other on the color wheel.



58, 75.051, 6.948



90, 63.873, 163.485

Rectangle

The Rectangle color scheme consists of four colors that form a rectangle on the color wheel.



58, 75.051, 6.948



58, 75.051, 56.948



58, 75.051, 186.948



58, 75.051, 236.948

Sweetspot

The Sweet Spot groups the original color and five complimentary colors.



58, 75.047, 6.950



85, 23.947, 355.604



53, 105.786, 316.744



43, 16.657, 356.063



0, 0.000, 0.000



53, 0.007, 296.813

Same Dimension

The Same Dimension uses a secret algorithm to generate beautiful new colors.



58, 75.047, 6.950



55, 83.407, 13.713



61, 78.237, 39.184



50, 5.786, 354.073



40, 69.470, 17.538



10, 31.330, 9.763

Inverse Universe

The Inverse Universe completely reimagines the original color for something new.



58, 75.047, 6.950



55, 83.407, 13.713



83, 40.888, 219.228



50, 5.786, 354.073



40, 69.470, 17.538



10, 31.330, 9.763

Previews

White Background



This preview shows how the CIELCh color 58, 75.051, 6.948 looks on a white background.

Color Contrast Check

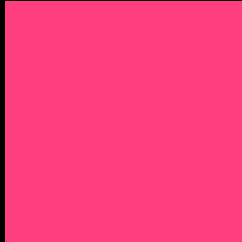
Large Text (above 18pt) WCAG AA ✓ Pass

Any Text WCAG AA ✗ Fail

Large Text (above 18pt) WCAG AAA ✗ Fail

Any Text WCAG AAA ✗ Fail

Black Background



This preview shows how the CIELCh color 58, 75.051, 6.948 looks on a black background.

Color Contrast Check

Large Text (above 18pt) WCAG AA ✓ Pass

Any Text WCAG AA ✓ Pass

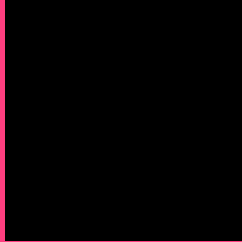
Large Text (above 18pt) WCAG AAA ✓ Pass

Any Text WCAG AAA × Fail

If you want to check with other color combinations, try the [Color Contrast Checker](#).

CIELCh 58, 75.051, 6.948

Background



This preview shows how black text looks on a background with the CIELCh color 58, 75.051, 6.948.



This preview shows how white text looks on a background with the CIELCh color 58, 75.051, 6.948.

Color Blindness Simulation

Color vision deficiency is a very complex topic, and I could not describe the different causes any better than Wikipedia does, so if you want to learn more, you should check out their [article about color blindness](#).

Dichromacy



Original Color
58, 75.017, 7.051

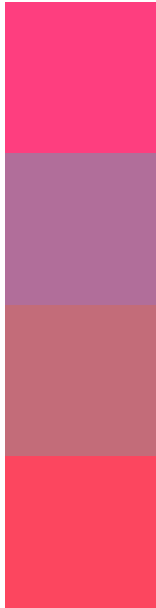
Protanopia
58, 17.680, 286.472

Deuteranopia
58, 14.669, 58.091



Tritanopia
58, 76.780, 29.779

Trichromacy



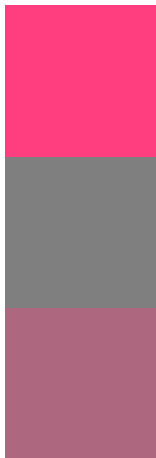
Original Color
58, 75.017, 7.051

Protanomaly
55, 35.429, 339.040

Deuteranomaly
56, 36.820, 12.872

Tritanomaly
58, 74.607, 21.873

Monochromacy



Original Color
58, 75.017, 7.051

Achromatopsia
53, 0.007, 296.813

Achromatomaly
52, 31.272, 357.763

CSS Examples

Text

The CSS property to change the color of the text to CIELCh 58, 75.051, 6.948 is called "color". The color property can be set on classes, ids or directly on the HTML element.

This example shows how text in the color `rgb(254, 62, 127)` looks like.

```
.text, #text, p{  
    color:rgb(254, 62, 127)  
}
```

If you want to add a text shadow in that color use the text-shadow property, you can generate a text shadow directly with our [CSS Text Shadow Generator](#).

Here you see how black text with a 4 pixel rgb(254, 62, 127) colored shadow looks like.

```
.shadow{ text-shadow: 4px 4px 2px rgb(254, 62, 127) }
```

Border

The CSS property to change the border of an element to CIELCh 58, 75.051, 6.948 is called "border". The border property can be set on classes, ids or directly on the HTML element.

This example shows the color as border, it can be applied via the CSS property "border" or "border-color".

```
.border, #border, table{ border:4px solid rgb(254, 62, 127) }
```

If only the border color should be changed use the property `border-color`.

```
.border{ border-color:rgb(254, 62, 127) }
```

If you want to add a box shadow in that color use:

Here you see how a box with a 4 pixel `rgb(254, 62, 127)` colored shadow looks like.

```
.boxshadow{ -moz-box-shadow:4px 4px 4px  
4px rgb(254, 62, 127); -webkit-box-  
shadow:4px 4px 4px 4px rgb(254, 62, 127);  
box-shadow:4px 4px 4px 4px rgb(254, 62,  
127) }
```

Background

The CSS property to change the background color of an element to CIELCh 58, 75.051, 6.948 is called "background". The background property can be set on classes, ids or directly on the HTML element.

```
.background, #background, body{  
background: rgb(254, 62, 127) }
```

If only the background color should be changed can be used:

```
.background{ background-color: rgb(254, 62,  
127) }
```

This example shows the color as background, it is applied via the CSS property "background".

To optimize and compress your CSS code, you can use our [online CSS compressor and optimizer](#) based on csstidy. If you want to create a linear or radial gradient as background or border, check our [CSS Gradient Generator](#).

Hey! You found this booklet interesting? Support Converting Colors with the new Membership Option!

The pro membership hides all ads, plus gives you double the colors in the color bucket, and more awesome pro features!

[Learn more, Memberships starting at \\$2.50/m!](#)

**Follow me
on Twitter!**

@ConvertingColor