

Converting Colors

CIELCh(63, 10.593, 40.715)

Have a look what the booklet for
CIELCh(63, 10.593, 40.715) contains.

CIELCh(63, 10.642, 38.479)	3
<i>Conversions</i>	4
<i>Details</i>	6
<i>Harmonies</i>	11
<i>Previews</i>	20
<i>Color Blindness Simulation</i>	23
<i>CSS Examples</i>	26

Color

CIELCh(63, 10.642, 38.479)

Conversions

Conversions Part 1

Format	Color
Hex	AC938D
RGB	172, 147, 141
RGB Percent	67%, 58%, 55%
CMY	0.3253, 0.4233, 0.4468
CMYK	0.00, 0.15, 0.18, 0.33
HSL	12°, 16%, 61%
HSV	12°, 18%, 67%
XYZ	32.2803, 31.5869, 29.6166
YIQ	153.7910, 16.8260, 3.4340

Conversions

Conversions Part 2

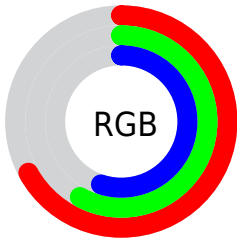
Format	Color
R_{YB}	172, 148, 141
Decimal	11309965
CIE _{Lab}	63.00, 8.33, 6.62
CIE _{LCh}	63, 10.642, 38.479
Yxy	31.5869, 0.3453, 0.3379
Android (android.graphics.Color)	4289500045 (0xFFAC938D)
YUV	153.7910, -6.3060, 15.9693
Hunter-Lab	56.2022, 4.1693, 8.0978

Details

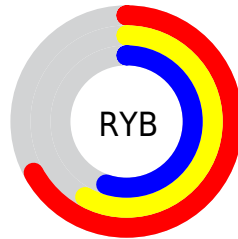
The CIELCh color $63, 10.642, 38.479$ is a light color, and the websafe version is hex 999999 . A complement of this color would be $66, 9.472, 219.353$, and the grayscale version is $64, 0.008, 296.813$.

A 20% lighter version of the original color is $83, 10.681, 37.222$, and $43, 10.580, 36.950$ is the 20% darker color. If you saturate the color by 10%, you get $59, 17.243, 38.551$, and if you desaturate by 10%, it is $67, 4.546, 38.508$.

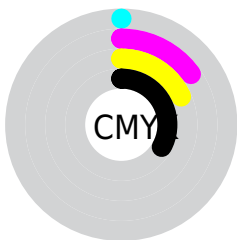
Distribution



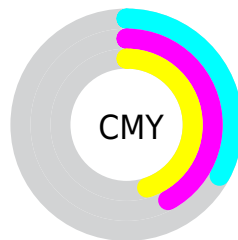
- Red (67%)
- Green (58%)
- Blue (55%)



- Red (67%)
- Yellow (58%)
- Blue (55%)



- Cyan (0%)
- Magenta (15%)
- Yellow (18%)
- Black (33%)



- Cyan (33%)
- Magenta (42%)
- Yellow (45%)

Brightness & Saturation Gradients

These gradients show how the CIELCh color 63, 10.642, 38.479 changes by changing the brightness by 10 percent. The first figure shows a shift by +10% for each color and the second figure -10%.

Similar to the brightness gradients but the following saturation gradients show a change of the CIELCh color 63, 10.642, 38.479 by changing the saturation by 10% instead.

■ 63, 10.642, 38.479

■ 63, 10.642, 38.479

■ 100, 10.642,
38.479

■ 53, 10.642, 38.479

■ 83, 10.642, 38.479

■ 43, 10.642, 38.479

■ 93, 10.642, 38.479

■ 33, 10.642, 38.479

■ 23, 10.642, 38.479

■ 13, 10.642, 38.479

■ 3, 10.642, 38.479

■ 0, 10.642, 38.479

■ 63, 10.642, 38.479

■ 63, 10.642, 38.479

■ 59, 17.243, 38.551

■ 67, 4.546, 38.508

55, 24.381, 38.760

71, 1.083, 219.238

51, 32.060, 39.162

75, 6.292, 219.107

48, 40.240, 39.790

80, 11.128,
219.364

45, 48.808, 40.654

84, 15.636,
219.676

42, 57.502, 41.687

40, 65.738, 42.642

88, 19.854,
220.018

38, 72.592, 43.178

92, 23.213,
212.107

38, 73.959, 43.436

95, 26.195,
197.802

Harmonies

Complementary

The Complementary color scheme is a pair of colors which are on the opposite of each other on the color wheel.



63, 10.642, 38.479



66, 9.472, 219.353

Rectangle

The Rectangle color scheme consists of four colors that form a rectangle on the color wheel.



63, 10.642, 38.479



63, 10.642, 88.479



63, 10.642, 218.479



63, 10.642, 268.479

Sweetspot

The Sweet Spot groups the original color and five complimentary colors.



63, 10.641, 38.490



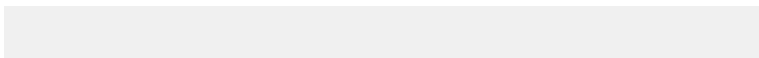
87, 3.477, 38.487



62, 18.438, 331.041



46, 2.376, 38.497



95, 0.011, 296.813



47, 0.006, 296.813

Same Dimension

The Same Dimension uses a secret algorithm to generate beautiful new colors.



63, 10.641, 38.490



78, 16.419, 38.502



67, 12.298, 90.203



35, 3.247, 38.508



33, 66.564, 43.525



3, 6.786, 34.715

Inverse Universe

The Inverse Universe completely reimagines the original color for something new.



66, 9.472, 219.353



83, 14.164, 219.555



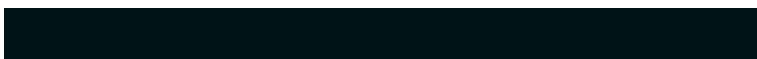
62, 12.296, 274.905



36, 3.067, 219.072



47, 29.520, 233.511



5, 6.440, 227.209

Previews

White Background



This preview shows how the CIELCh color 63, 10.642, 38.479 looks on a white background.

Color Contrast Check

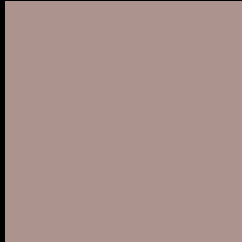
Large Text (above 18pt) WCAG AA × Fail

Any Text WCAG AA × Fail

Large Text (above 18pt) WCAG AAA × Fail

Any Text WCAG AAA × Fail

Black Background



This preview shows how the CIE LCh color 63, 10.642, 38.479 looks on a black background.

Color Contrast Check

Large Text (above 18pt) WCAG AA ✓ Pass

Any Text WCAG AA ✓ Pass

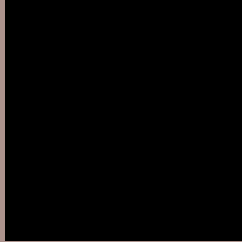
Large Text (above 18pt) WCAG AAA ✓ Pass

Any Text WCAG AAA ✓ Pass

If you want to check with other color combinations, try the [Color Contrast Checker](#).

CIELCh 63, 10.642, 38.479

Background



This preview shows how black text looks on a background with the CIELCh color 63, 10.642, 38.479.



This preview shows how white text looks on a background with the CIELCh color 63, 10.642, 38.479.

Color Blindness Simulation

Color vision deficiency is a very complex topic, and I could not describe the different causes any better than Wikipedia does, so if you want to learn more, you should check out their [article about color blindness](#).

Dichromacy



Original Color

63, 10.642, 38.479

Protanopia

63, 4.860, 85.737

Deuteranopia

63, 10.642, 38.479



Tritanopia
63, 12.849, 352.254

Trichromacy



Original Color
63, 10.642, 38.479

Protanomaly
63, 6.156, 58.925

Deuteranomaly
63, 10.642, 38.479

Tritanomaly
63, 10.989, 5.845

Monochromacy



Original Color
63, 10.642, 38.479

Achromatopsia
64, 0.008, 296.813

Achromatomaly
63, 4.062, 35.541

CSS Examples

Text

The CSS property to change the color of the text to CIELCh 63, 10.642, 38.479 is called "color". The color property can be set on classes, ids or directly on the HTML element.

This example shows how text in the color `rgb(172, 147, 141)` looks like.

```
.text, #text, p{  
    color:rgb(172, 147, 141)  
}
```

If you want to add a text shadow in that color use the text-shadow property, you can generate a text shadow directly with our [CSS Text Shadow Generator](#).

Here you see how black text with a 4 pixel rgb(172, 147, 141) colored shadow looks like.

```
.shadow{ text-shadow: 4px 4px 2px rgb(172, 147, 141) }
```

Border

The CSS property to change the border of an element to CIELCh 63, 10.642, 38.479 is called "border". The border property can be set on classes, ids or directly on the HTML element.

This example shows the color as border, it can be applied via the CSS property "border" or "border-color".

```
.border, #border, table{ border:4px solid rgb(172, 147, 141) }
```

If only the border color should be changed use the property `border-color`.

```
.border{ border-color:rgb(172, 147, 141) }
```

If you want to add a box shadow in that color use:

Here you see how a box with a 4 pixel `rgb(172, 147, 141)` colored shadow looks like.

```
.boxshadow{ -moz-box-shadow:4px 4px 4px  
4px rgb(172, 147, 141); -webkit-box-  
shadow:4px 4px 4px 4px rgb(172, 147, 141);  
box-shadow:4px 4px 4px 4px rgb(172, 147,  
141) }
```

Background

The CSS property to change the background color of an element to CIELCh 63, 10.642, 38.479 is called "background". The background property can be set on classes, ids or directly on the HTML element.

```
.background, #background, body{  
background: rgb(172, 147, 141) }
```

If only the background color should be changed can be used:

```
.background{ background-color: rgb(172,  
147, 141) }
```

This example shows the color as background, it is applied via the CSS property "background".

To optimize and compress your CSS code, you can use our [online CSS compressor and optimizer](#) based on csstidy. If you want to create a linear or radial gradient as background or border, check our [CSS Gradient Generator](#).

Hey! You found this booklet interesting? Support Converting Colors with the new Membership Option!

The pro membership hides all ads, plus gives you double the colors in the color bucket, and more awesome pro features!

[Learn more, Memberships starting at \\$2.50/m!](#)

**Follow me
on Twitter!**

@ConvertingColor