

Converting Colors

CIELCh(63, 12.548, 7.878)

Have a look what the booklet for
CIELCh(63, 12.548, 7.878) contains.

CIELCh(63, 12.568, 7.904)	3
<i>Conversions</i>	4
<i>Details</i>	6
<i>Harmonies</i>	11
<i>Previews</i>	20
<i>Color Blindness Simulation</i>	23
<i>CSS Examples</i>	26

Color

CIELCh(63, 12.568, 7.904)

Conversions

Conversions Part 1

Format	Color
Hex	B09196
RGB	176, 145, 150
RGB Percent	69%, 57%, 59%
CMY	0.3107, 0.4322, 0.4126
CMYK	0.00, 0.18, 0.15, 0.31
HSL	350°, 16%, 63%
HSV	350°, 18%, 69%
XYZ	33.4369, 31.5869, 33.1001
YIQ	154.8390, 16.8710, 8.1270

Conversions

Conversions Part 2

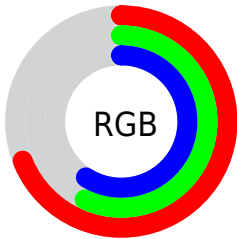
Format	Color
R _Y B	176, 145, 150
Decimal	11571606
CIE Lab	63.00, 12.45, 1.73
CIE LCh	63, 12.568, 7.904
Yxy	31.5869, 0.3408, 0.3219
Android (android.graphics.Color)	4289761686 (0xFFB09196)
YUV	154.8390, -2.3856, 18.5582
Hunter-Lab	56.2022, 7.8428, 4.4229

Details

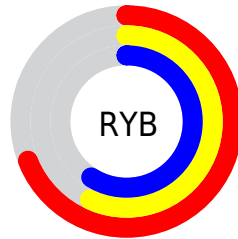
The CIELCh color $63, 12.568, 7.904$ is a light color, and the websafe version is hex `CC9999`. A complement of this color would be $69, 11.624, 184.785$, and the grayscale version is $64, 0.008, 296.813$.

A 20% lighter version of the original color is $83, 12.566, 8.313$, and $43, 12.758, 7.674$ is the 20% darker color. If you saturate the color by 10%, you get $58, 20.217, 9.150$, and if you desaturate by 10%, it is $68, 5.287, 6.838$.

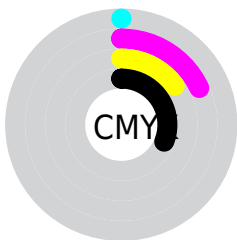
Distribution



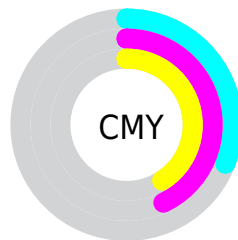
- Red (69%)
- Green (57%)
- Blue (59%)



- Red (69%)
- Yellow (57%)
- Blue (59%)



- Cyan (0%)
- Magenta (18%)
- Yellow (15%)
- Black (31%)



- Cyan (31%)
- Magenta (43%)
- Yellow (41%)

Brightness & Saturation Gradients

These gradients show how the CIELCh color 63, 12.568, 7.904 changes by changing the brightness by 10 percent. The first figure shows a shift by +10% for each color and the second figure -10%.

Similar to the brightness gradients but the following saturation gradients show a change of the CIELCh color 63, 12.568, 7.904 by changing the saturation by 10% instead.

63, 12.568, 7.904

63, 12.568, 7.904

100, 12.568, 7.904

53, 12.568, 7.904

83, 12.568, 7.904

43, 12.568, 7.904

93, 12.568, 7.904

33, 12.568, 7.904

23, 12.568, 7.904

13, 12.568, 7.904

3, 12.568, 7.904

0, 12.568, 7.904

63, 12.568, 7.904

63, 12.568, 7.904

58, 20.217, 9.150

68, 5.287, 6.838

■ 54, 28.165, 10.653

■ 73, 1.592, 186.360

■ 49, 36.264, 12.516

■ 78, 8.074, 185.377

■ 46, 44.296, 14.860

■ 83, 14.181,
184.703

■ 42, 51.977, 17.825

■ 88, 19.941,
184.121

■ 40, 59.028, 21.535

■ 38, 65.266, 26.015

■ 93, 25.387,
183.606

■ 37, 70.710, 30.946

■ 95, 25.323,
195.506

■ 37, 71.990, 32.008

■ 95, 25.169,
197.865

Harmonies

Complementary

The Complementary color scheme is a pair of colors which are on the opposite of each other on the color wheel.



63, 12.568, 7.904



69, 11.624, 184.785

Rectangle

The Rectangle color scheme consists of four colors that form a rectangle on the color wheel.



63, 12.568, 7.904



63, 12.568, 57.904



63, 12.568, 187.904



63, 12.568, 237.904

Sweetspot

The Sweet Spot groups the original color and five complimentary colors.



63, 12.566, 7.910



88, 4.274, 6.559



63, 19.856, 320.582



46, 2.918, 6.638



96, 0.011, 296.813



48, 0.006, 296.813

Same Dimension

The Same Dimension uses a secret algorithm to generate beautiful new colors.



63, 12.566, 7.910



78, 18.783, 8.349



66, 10.085, 54.311



34, 3.899, 7.012



31, 63.757, 31.302



2, 7.963, 8.605

Inverse Universe

The Inverse Universe completely reimagines the original color for something new.



63, 12.566, 7.910



78, 18.783, 8.349



67, 9.206, 237.441



34, 3.899, 7.012



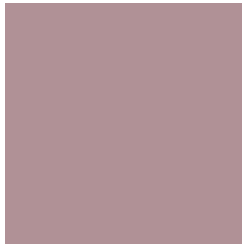
31, 63.757, 31.302



2, 7.963, 8.605

Previews

White Background



This preview shows how the CIELCh color 63, 12.568, 7.904 looks on a white background.

Color Contrast Check

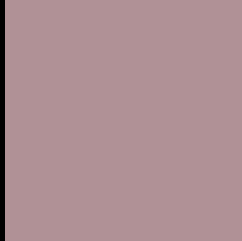
Large Text (above 18pt) WCAG AA × Fail

Any Text WCAG AA × Fail

Large Text (above 18pt) WCAG AAA × Fail

Any Text WCAG AAA × Fail

Black Background



This preview shows how the CIE LCh color 63, 12.568, 7.904 looks on a black background.

Color Contrast Check

Large Text (above 18pt) WCAG AA ✓ Pass

Any Text WCAG AA ✓ Pass

Large Text (above 18pt) WCAG AAA ✓ Pass

Any Text WCAG AAA ✓ Pass

If you want to check with other color combinations, try the [Color Contrast Checker](#).

CIELCh 63, 12.568, 7.904

Background



This preview shows how black text looks on a background with the CIELCh color 63, 12.568, 7.904.



This preview shows how white text looks on a background with the CIELCh color 63, 12.568, 7.904.

Color Blindness Simulation

Color vision deficiency is a very complex topic, and I could not describe the different causes any better than Wikipedia does, so if you want to learn more, you should check out their [article about color blindness](#).

Dichromacy



Original Color

63, 12.568, 7.904

Protanopia

63, 1.620, 335.619

Deuteranopia

63, 8.304, 16.329



Tritanopia
63, 13.917, 354.752

Trichromacy



Original Color
63, 12.568, 7.904

Protanomaly
63, 5.713, 2.881

Deuteranomaly
63, 9.549, 13.629

Tritanomaly
63, 13.517, 359.061

Monochromacy



Original Color
63, 12.568, 7.904

Achromatopsia
64, 0.008, 296.813

Achromatomaly
64, 4.802, 6.382

CSS Examples

Text

The CSS property to change the color of the text to CIELCh 63, 12.568, 7.904 is called "color". The color property can be set on classes, ids or directly on the HTML element.

This example shows how text in the color `rgb(176, 145, 150)` looks like.

```
.text, #text, p{  
    color:rgb(176, 145, 150)  
}
```

If you want to add a text shadow in that color use the text-shadow property, you can generate a text shadow directly with our [CSS Text Shadow Generator](#).

Here you see how black text with a 4 pixel rgb(176, 145, 150) colored shadow looks like.

```
.shadow{ text-shadow: 4px 4px 2px rgb(176, 145, 150) }
```

Border

The CSS property to change the border of an element to CIELCh 63, 12.568, 7.904 is called "border". The border property can be set on classes, ids or directly on the HTML element.

This example shows the color as border, it can be applied via the CSS property "border" or "border-color".

```
.border, #border, table{ border:4px solid rgb(176, 145, 150) }
```

If only the border color should be changed use the property `border-color`.

```
.border{ border-color:rgb(176, 145, 150) }
```

If you want to add a box shadow in that color use:

Here you see how a box with a 4 pixel `rgb(176, 145, 150)` colored shadow looks like.

```
.boxshadow{ -moz-box-shadow:4px 4px 4px  
4px rgb(176, 145, 150); -webkit-box-  
shadow:4px 4px 4px 4px rgb(176, 145, 150);  
box-shadow:4px 4px 4px 4px rgb(176, 145,  
150) }
```

Background

The CSS property to change the background color of an element to CIELCh 63, 12.568, 7.904 is called "background". The background property can be set on classes, ids or directly on the HTML element.

```
.background, #background, body{  
background: rgb(176, 145, 150) }
```

If only the background color should be changed can be used:

```
.background{ background-color: rgb(176,  
145, 150) }
```

This example shows the color as background, it is applied via the CSS property "background".

To optimize and compress your CSS code, you can use our [online CSS compressor and optimizer](#) based on csstidy. If you want to create a linear or radial gradient as background or border, check our [CSS Gradient Generator](#).

Hey! You found this booklet interesting? Support Converting Colors with the new Membership Option!

The pro membership hides all ads, plus gives you double the colors in the color bucket, and more awesome pro features!

[Learn more, Memberships starting at \\$2.50/m!](#)

**Follow me
on Twitter!**

@ConvertingColor