

Converting Colors

CIELCh(63, 12.832, 58.984)

Have a look what the booklet for
CIELCh(63, 12.832, 58.984) contains.

CIELCh(63, 12.986, 59.857)	3
<i>Conversions</i>	4
<i>Details</i>	6
<i>Harmonies</i>	11
<i>Previews</i>	20
<i>Color Blindness Simulation</i>	23
<i>CSS Examples</i>	26

Color

CIELCh(63, 12.986, 59.857)

Conversions

Conversions Part 1

Format	Color
Hex	AC9485
RGB	172, 148, 133
RGB Percent	67%, 58%, 52%
CMY	0.3260, 0.4201, 0.4789
CMYK	0.00, 0.14, 0.23, 0.33
HSL	23°, 19%, 60%
HSV	23°, 23%, 67%
XYZ	31.7805, 31.5869, 26.5680
YIQ	153.4660, 19.1190, 0.4230

Conversions

Conversions Part 2

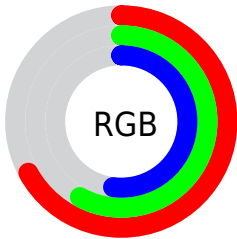
Format	Color
RYB	172, 157, 133
Decimal	11310213
CIELab	63.00, 6.52, 11.23
CIELCh	63, 12.986, 59.857
Yxy	31.5869, 0.3534, 0.3512
Android (android.graphics.Color)	4289500293 (0xFFAC9485)
YUV	153.4660, -10.0897, 16.2543
Hunter-Lab	56.2022, 2.5819, 11.3139

Details

The CIELCh color **63, 12.986, 59.857** is a light color, and the websafe version is hex **999999**. A complement of this color would be **63, 11.713, 244.805**, and the grayscale version is **63, 0.008, 296.813**.

A 20% lighter version of the original color is **83, 13.093, 59.785**, and **43, 13.106, 59.746** is the 20% darker color. If you saturate the color by 10%, you get **60, 19.340, 58.980**, and if you desaturate by 10%, it is **66, 7.030, 60.772**.

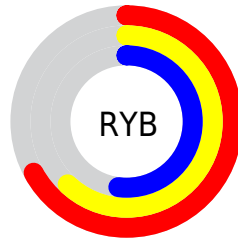
Distribution



Red (67%)

Green (58%)

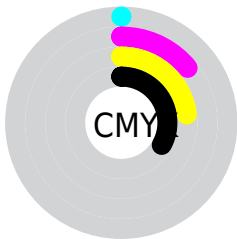
Blue (52%)



Red (67%)

Yellow (62%)

Blue (52%)

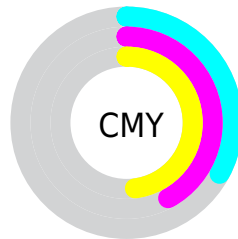


Cyan (0%)

Magenta (14%)

Yellow (23%)

Black (33%)



Cyan (33%)

Magenta (42%)

Yellow (48%)

Brightness & Saturation Gradients

These gradients show how the CIELCh color 63, 12.986, 59.857 changes by changing the brightness by 10 percent. The first figure shows a shift by +10% for each color and the second figure -10%.

Similar to the brightness gradients but the following saturation gradients show a change of the CIELCh color 63, 12.986, 59.857 by changing the saturation by 10% instead.

■ 63, 12.986, 59.857

■ 63, 12.986, 59.857

■ 100, 12.986,
59.857

■ 53, 12.986, 59.857

■ 83, 12.986, 59.857

■ 43, 12.986, 59.857

■ 93, 12.986, 59.857

■ 33, 12.986, 59.857

■ 23, 12.986, 59.857

■ 13, 12.986, 59.857

■ 3, 12.986, 59.857

■ 0, 12.986, 59.857

■ 63, 12.986, 59.857

■ 63, 12.986, 59.857

■ 60, 19.340, 58.980

■ 66, 7.030, 60.772

57, 26.113, 58.135

69, 1.439, 61.500

54, 33.300, 57.340

73, 3.822, 242.849

51, 40.844, 56.583

76, 8.791, 243.747

48, 48.584, 55.813

79, 13.502,
244.676

46, 56.143, 54.886

83, 17.986,
245.595

44, 62.768, 53.489

86, 22.271,
246.493

42, 67.029, 52.353

89, 21.971,
230.876

92, 23.042,
213.754

Harmonies

Complementary

The Complementary color scheme is a pair of colors which are on the opposite of each other on the color wheel.



63, 12.986, 59.857



63, 11.713, 244.805

Rectangle

The Rectangle color scheme consists of four colors that form a rectangle on the color wheel.



63, 12.986, 59.857



63, 12.986, 109.857



63, 12.986, 239.857



63, 12.986, 289.857

Sweetspot

The Sweet Spot groups the original color and five complimentary colors.



63, 12.986, 59.867



86, 4.733, 61.253



60, 20.212, 339.595



45, 3.077, 61.207



95, 0.011, 296.813



47, 0.006, 296.813

Same Dimension

The Same Dimension uses a secret algorithm to generate beautiful new colors.



63, 12.986, 59.867



79, 19.505, 59.437



68, 18.890, 102.583



35, 3.126, 61.071



37, 60.560, 52.774



3, 6.389, 53.263

Inverse Universe

The Inverse Universe completely reimagines the original color for something new.



63, 11.713, 244.805



79, 17.163, 245.553



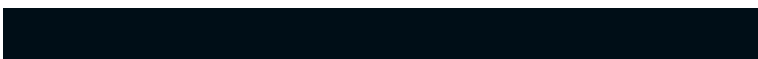
58, 19.626, 287.775



35, 3.008, 243.096



38, 38.086, 269.286



3, 6.750, 253.282

Previews

White Background



This preview shows how the CIELCh color 63, 12.986, 59.857 looks on a white background.

Color Contrast Check

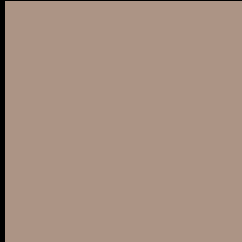
Large Text (above 18pt) WCAG AA × Fail

Any Text WCAG AA × Fail

Large Text (above 18pt) WCAG AAA × Fail

Any Text WCAG AAA × Fail

Black Background



This preview shows how the CIELCh color 63, 12.986, 59.857 looks on a black background.

Color Contrast Check

Large Text (above 18pt) WCAG AA ✓ Pass

Any Text WCAG AA ✓ Pass

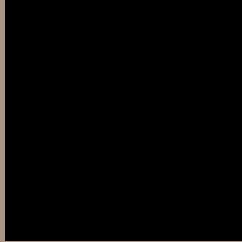
Large Text (above 18pt) WCAG AAA ✓ Pass

Any Text WCAG AAA ✓ Pass

If you want to check with other color combinations, try the [Color Contrast Checker](#).

CIELCh 63, 12.986, 59.857

Background



This preview shows how black text looks on a background with the CIELCh color 63, 12.986, 59.857.



This preview shows how white text looks on a background with the CIELCh color 63, 12.986, 59.857.

Color Blindness Simulation

Color vision deficiency is a very complex topic, and I could not describe the different causes any better than Wikipedia does, so if you want to learn more, you should check out their [article about color blindness](#).

Dichromacy



Original Color

63, 12.986, 59.857

Protanopia

63, 9.871, 92.488

Deuteranopia

63, 13.649, 54.834



Tritanopia
63, 13.196, 353.124

Trichromacy



Original Color
63, 12.986, 59.857

Protanomaly
63, 10.851, 79.957

Deuteranomaly
63, 13.304, 55.846

Tritanomaly
63, 11.171, 14.781

Monochromacy



Original Color
63, 12.986, 59.857

Achromatopsia
63, 0.008, 296.813

Achromatomaly
63, 4.496, 57.809

CSS Examples

Text

The CSS property to change the color of the text to CIELCh 63, 12.986, 59.857 is called "color". The color property can be set on classes, ids or directly on the HTML element.

This example shows how text in the color `rgb(172, 148, 133)` looks like.

```
.text, #text, p{  
    color:rgb(172, 148, 133)  
}
```

If you want to add a text shadow in that color use the text-shadow property, you can generate a text shadow directly with our [CSS Text Shadow Generator](#).

Here you see how black text with a 4 pixel rgb(172, 148, 133) colored shadow looks like.

```
.shadow{ text-shadow: 4px 4px 2px rgb(172, 148, 133) }
```

Border

The CSS property to change the border of an element to CIELCh 63, 12.986, 59.857 is called "border". The border property can be set on classes, ids or directly on the HTML element.

This example shows the color as border, it can be applied via the CSS property "border" or "border-color".

```
.border, #border, table{ border:4px solid rgb(172, 148, 133) }
```

If only the border color should be changed use the property `border-color`.

```
.border{ border-color:rgb(172, 148, 133) }
```

If you want to add a box shadow in that color use:

Here you see how a box with a 4 pixel `rgb(172, 148, 133)` colored shadow looks like.

```
.boxshadow{ -moz-box-shadow:4px 4px 4px  
4px rgb(172, 148, 133); -webkit-box-  
shadow:4px 4px 4px 4px rgb(172, 148, 133);  
box-shadow:4px 4px 4px 4px rgb(172, 148,  
133) }
```

Background

The CSS property to change the background color of an element to CIELCh 63, 12.986, 59.857 is called "background". The background property can be set on classes, ids or directly on the HTML element.

```
.background, #background, body{  
background: rgb(172, 148, 133) }
```

If only the background color should be changed can be used:

```
.background{ background-color: rgb(172,  
148, 133) }
```

This example shows the color as background, it is applied via the CSS property "background".

To optimize and compress your CSS code, you can use our [online CSS compressor and optimizer](#) based on csstidy. If you want to create a linear or radial gradient as background or border, check our [CSS Gradient Generator](#).

Hey! You found this booklet interesting? Support Converting Colors with the new Membership Option!

The pro membership hides all ads, plus gives you double the colors in the color bucket, and more awesome pro features!

[Learn more, Memberships starting at \\$2.50/m!](#)

**Follow me
on Twitter!**

@ConvertingColor