

Converting Colors

CIELCh(63, 12.966, 65.852)

Have a look what the booklet for
CIELCh(63, 12.966, 65.852) contains.

CIELCh(63, 12.863, 66.984)	3
<i>Conversions</i>	4
<i>Details</i>	6
<i>Harmonies</i>	11
<i>Previews</i>	20
<i>Color Blindness Simulation</i>	23
<i>CSS Examples</i>	26

Color

CIELCh(63, 12.863, 66.984)

Conversions

Conversions Part 1

Format	Color
Hex	AA9584
RGB	170, 149, 132
RGB Percent	67%, 58%, 52%
CMY	0.3344, 0.4167, 0.4834
CMYK	0.00, 0.12, 0.22, 0.33
HSL	27°, 18%, 59%
HSV	27°, 22%, 67%
XYZ	31.3724, 31.5869, 26.1815
YIQ	153.3410, 17.9730, -0.8350

Conversions

Conversions Part 2

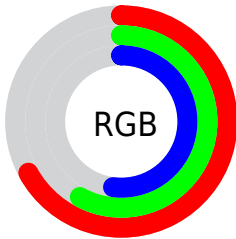
Format	Color
RYB	170, 163, 132
Decimal	11179396
CIELab	63.00, 5.03, 11.84
CIElCh	63, 12.863, 66.984
Yxy	31.5869, 0.3519, 0.3543
Android (android.graphics.Color)	4289369476 (0xFFAA9584)
YUV	153.3410, -10.5211, 14.6099
Hunter-Lab	56.2022, 1.2858, 11.7217

Details

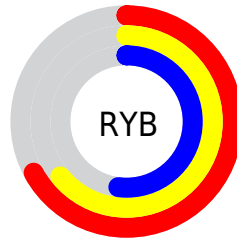
The CIELCh color $63, 12.863, 66.984$ is a light color, and the websafe version is hex 999999 . A complement of this color would be $62, 11.893, 252.591$, and the grayscale version is $63, 0.008, 296.813$.

A 20% lighter version of the original color is $83, 12.979, 66.474$, and $43, 12.494, 65.670$ is the 20% darker color. If you saturate the color by 10%, you get $60, 19.140, 65.887$, and if you desaturate by 10%, it is $66, 6.922, 68.092$.

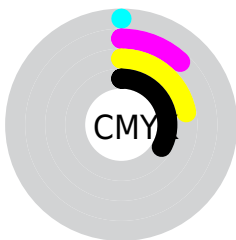
Distribution



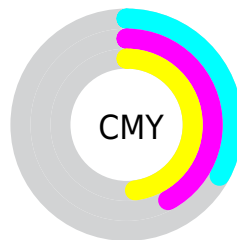
- Red (67%)
- Green (58%)
- Blue (52%)



- Red (67%)
- Yellow (64%)
- Blue (52%)



- Cyan (0%)
- Magenta (12%)
- Yellow (22%)
- Black (33%)



- Cyan (33%)
- Magenta (42%)
- Yellow (48%)

Brightness & Saturation Gradients

These gradients show how the CIELCh color 63, 12.863, 66.984 changes by changing the brightness by 10 percent. The first figure shows a shift by +10% for each color and the second figure -10%.

Similar to the brightness gradients but the following saturation gradients show a change of the CIELCh color 63, 12.863, 66.984 by changing the saturation by 10% instead.

■ 63, 12.863, 66.984

■ 63, 12.863, 66.984

■ 100, 12.863,
66.984

■ 53, 12.863, 66.984

■ 83, 12.863, 66.984

■ 43, 12.863, 66.984

■ 93, 12.863, 66.984

■ 33, 12.863, 66.984

■ 23, 12.863, 66.984

■ 13, 12.863, 66.984

■ 3, 12.863, 66.984

■ 0, 12.863, 66.984

■ 63, 12.863, 66.984

■ 63, 12.863, 66.984

■ 60, 19.140, 65.887

■ 66, 6.922, 68.092

57, 25.764, 64.787

69, 1.291, 68.982

55, 32.722, 63.699

72, 4.058, 250.456

52, 39.945, 62.606

75, 9.156, 251.489

50, 47.258, 61.452

78, 14.032,
252.531

47, 54.281, 60.104

81, 18.712,
253.546

45, 60.303, 58.283

44, 64.252, 56.731

84, 23.219,
254.528

86, 23.015,
244.272

89, 22.493,
228.939

Harmonies

Complementary

The Complementary color scheme is a pair of colors which are on the opposite of each other on the color wheel.



63, 12.863, 66.984



62, 11.893, 252.591

Rectangle

The Rectangle color scheme consists of four colors that form a rectangle on the color wheel.



63, 12.863, 66.984



63, 12.863, 116.984



63, 12.863, 246.984



63, 12.863, 296.984

Sweetspot

The Sweet Spot groups the original color and five complimentary colors.



63, 12.863, 66.994



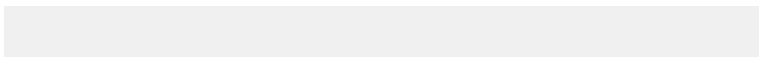
86, 4.797, 68.640



59, 19.081, 342.033



46, 3.147, 68.584



95, 0.011, 296.813



47, 0.006, 296.813

Same Dimension

The Same Dimension uses a secret algorithm to generate beautiful new colors.



63, 12.863, 66.994



79, 19.574, 66.427



68, 19.377, 105.105



34, 3.116, 68.421



38, 57.897, 57.191



3, 5.429, 62.083

Inverse Universe

The Inverse Universe completely reimagines the original color for something new.



62, 11.893, 252.591



77, 17.734, 253.469



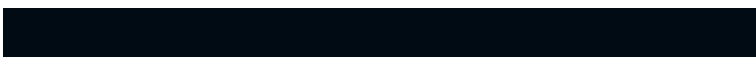
57, 20.250, 290.011



34, 3.027, 250.710



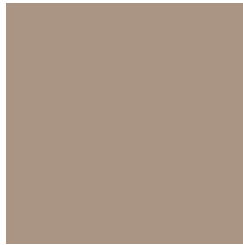
34, 42.567, 277.489



3, 5.864, 257.839

Previews

White Background



This preview shows how the CIELCh color 63, 12.863, 66.984 looks on a white background.

Color Contrast Check

Large Text (above 18pt) WCAG AA × Fail

Any Text WCAG AA × Fail

Large Text (above 18pt) WCAG AAA × Fail

Any Text WCAG AAA × Fail

Black Background



This preview shows how the CIELCh color 63, 12.863, 66.984 looks on a black background.

Color Contrast Check

Large Text (above 18pt) WCAG AA ✓ Pass

Any Text WCAG AA ✓ Pass

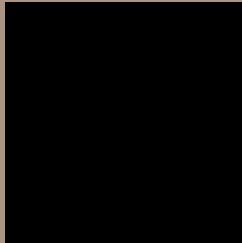
Large Text (above 18pt) WCAG AAA ✓ Pass

Any Text WCAG AAA ✓ Pass

If you want to check with other color combinations, try the [Color Contrast Checker](#).

CIELCh 63, 12.863, 66.984

Background



This preview shows how black text looks on a background with the CIELCh color 63, 12.863, 66.984.



This preview shows how white text looks on a background with the CIELCh color 63, 12.863, 66.984.

Color Blindness Simulation

Color vision deficiency is a very complex topic, and I could not describe the different causes any better than Wikipedia does, so if you want to learn more, you should check out their [article about color blindness](#).

Dichromacy



Original Color


63, 12.863, 66.984

Protanopia

63, 11.058, 91.923

Deuteranopia

63, 14.346, 55.602



Tritanopia
63, 12.505, 351.340

Trichromacy



Original Color
63, 12.863, 66.984

Protanomaly
63, 11.347, 81.216

Deuteranomaly
63, 13.693, 60.405

Tritanomaly
63, 10.346, 17.309

Monochromacy



Original Color
63, 12.863, 66.984

Achromatopsia
63, 0.008, 296.813

Achromatomaly
63, 4.584, 66.295

CSS Examples

Text

The CSS property to change the color of the text to CIELCh 63, 12.863, 66.984 is called "color". The color property can be set on classes, ids or directly on the HTML element.

This example shows how text in the color `rgb(170, 149, 132)` looks like.

```
.text, #text, p{  
    color:rgb(170, 149, 132)  
}
```

If you want to add a text shadow in that color use the text-shadow property, you can generate a text shadow directly with our [CSS Text Shadow Generator](#).

Here you see how black text with a 4 pixel rgb(170, 149, 132) colored shadow looks like.

```
.shadow{ text-shadow: 4px 4px 2px rgb(170, 149, 132) }
```

Border

The CSS property to change the border of an element to CIELCh 63, 12.863, 66.984 is called "border". The border property can be set on classes, ids or directly on the HTML element.

This example shows the color as border, it can be applied via the CSS property "border" or "border-color".

```
.border, #border, table{ border:4px solid rgb(170, 149, 132) }
```

If only the border color should be changed use the property `border-color`.

```
.border{ border-color:rgb(170, 149, 132) }
```

If you want to add a box shadow in that color use:

Here you see how a box with a 4 pixel `rgb(170, 149, 132)` colored shadow looks like.

```
.boxshadow{ -moz-box-shadow:4px 4px 4px  
4px rgb(170, 149, 132); -webkit-box-  
shadow:4px 4px 4px 4px rgb(170, 149, 132);  
box-shadow:4px 4px 4px 4px rgb(170, 149,  
132) }
```

Background

The CSS property to change the background color of an element to CIELCh 63, 12.863, 66.984 is called "background". The background property can be set on classes, ids or directly on the HTML element.

```
.background, #background, body{  
background: rgb(170, 149, 132) }
```

If only the background color should be changed can be used:

```
.background{ background-color: rgb(170,  
149, 132) }
```

This example shows the color as background, it is applied via the CSS property "background".

To optimize and compress your CSS code, you can use our [online CSS compressor and optimizer](#) based on csstidy. If you want to create a linear or radial gradient as background or border, check our [CSS Gradient Generator](#).

Hey! You found this booklet interesting? Support Converting Colors with the new Membership Option!

The pro membership hides all ads, plus gives you double the colors in the color bucket, and more awesome pro features!

[Learn more, Memberships starting at \\$2.50/m!](#)

**Follow me
on Twitter!**

@ConvertingColor