

Converting Colors

CIELCh(63, 16.467, 6.270)

Have a look what the booklet for
CIELCh(63, 16.467, 6.270) contains.

CIELCh(63, 16.458, 5.480)	3
<i>Conversions</i>	4
<i>Details</i>	6
<i>Harmonies</i>	11
<i>Previews</i>	20
<i>Color Blindness Simulation</i>	23
<i>CSS Examples</i>	26

Color

CIELCh(63, 16.458, 5.480)

Conversions

Conversions Part 1

Format	Color
Hex	B68E96
RGB	182, 142, 150
RGB Percent	71%, 56%, 59%
CMY	0.2854, 0.4423, 0.4110
CMYK	0.00, 0.22, 0.18, 0.29
HSL	348°, 22%, 64%
HSV	348°, 22%, 71%
XYZ	34.5675, 31.5869, 33.2159
YIQ	154.8720, 21.2720, 10.9680

Conversions

Conversions Part 2

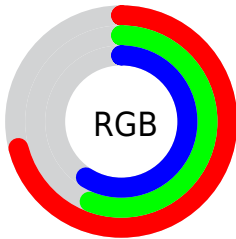
Format	Color
RYB	182, 142, 150
Decimal	11964054
CIELab	63.00, 16.38, 1.57
CIELCh	63, 16.458, 5.480
Yxy	31.5869, 0.3479, 0.3179
Android (android.graphics.Color)	4290154134 (0xFFB68E96)
YUV	154.8720, -2.4019, 23.7913
Hunter-Lab	56.2022, 11.4335, 4.3008

Details

The CIELCh color **63, 16.458, 5.480** is a light color, and the websafe version is hex **CC9999**. A complement of this color would be **71, 15.066, 181.300**, and the grayscale version is **64, 0.008, 296.813**.

A 20% lighter version of the original color is **83, 16.229, 5.716**, and **43, 15.971, 6.590** is the 20% darker color. If you saturate the color by 10%, you get **58, 24.483, 6.843**, and if you desaturate by 10%, it is **68, 8.740, 4.334**.

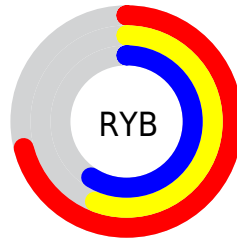
Distribution



Red (71%)

Green (56%)

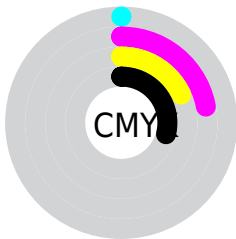
Blue (59%)



Red (71%)

Yellow (56%)

Blue (59%)

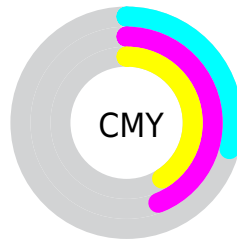


Cyan (0%)

Magenta (22%)

Yellow (18%)

Black (29%)



Cyan (29%)

Magenta (44%)

Yellow (41%)


Brightness & Saturation Gradients

These gradients show how the CIELCh color 63, 16.458, 5.480 changes by changing the brightness by 10 percent. The first figure shows a shift by +10% for each color and the second figure -10%.

Similar to the brightness gradients but the following saturation gradients show a change of the CIELCh color 63, 16.458, 5.480 by changing the saturation by 10% instead.

 63, 16.458, 5.480  63, 16.458, 5.480

 100, 16.458, 5.480  53, 16.458, 5.480

 83, 16.458, 5.480  43, 16.458, 5.480

 93, 16.458, 5.480  33, 16.458, 5.480

 23, 16.458, 5.480

 13, 16.458, 5.480

 3, 16.458, 5.480

 0, 16.458, 5.480

 63, 16.458, 5.480  63, 16.458, 5.480

 58, 24.483, 6.843  68, 8.740, 4.334

54, 32.701, 8.495

73, 1.395, 3.091

49, 40.911, 10.544

78, 5.563, 182.693

46, 48.837, 13.123

84, 12.141,
181.924

43, 56.161, 16.382

89, 18.363,
181.272

40, 62.623, 20.446

39, 68.138, 25.307

94, 24.257,
180.694

38, 72.172, 29.401

95, 23.568,
194.509

95, 23.357,
197.977

Harmonies

Complementary

The Complementary color scheme is a pair of colors which are on the opposite of each other on the color wheel.



63, 16.458, 5.480



71, 15.066, 181.300

Rectangle

The Rectangle color scheme consists of four colors that form a rectangle on the color wheel.



63, 16.458, 5.480



63, 16.458, 55.480



63, 16.458, 185.480



63, 16.458, 235.480

Sweetspot

The Sweet Spot groups the original color and five complimentary colors.



63, 16.456, 5.485



89, 6.260, 3.814



63, 25.307, 319.770



47, 4.107, 3.879



97, 0.011, 296.813



50, 0.007, 296.813

Same Dimension

The Same Dimension uses a secret algorithm to generate beautiful new colors.



63, 16.456, 5.485



78, 24.390, 6.063



66, 13.209, 50.185



36, 4.139, 4.054



32, 63.811, 28.664



2, 10.905, 7.439

Inverse Universe

The Inverse Universe completely reimagines the original color for something new.



63, 16.456, 5.485



78, 24.390, 6.063



68, 11.645, 233.511



36, 4.139, 4.054



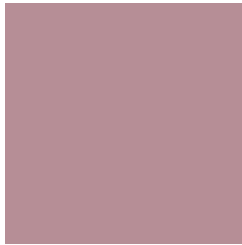
32, 63.811, 28.664



2, 10.905, 7.439

Previews

White Background



This preview shows how the CIELCh color 63, 16.458, 5.480 looks on a white background.

Color Contrast Check

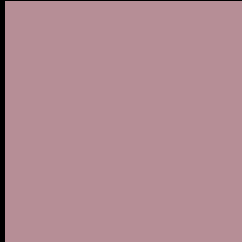
Large Text (above 18pt) WCAG AA × Fail

Any Text WCAG AA × Fail

Large Text (above 18pt) WCAG AAA × Fail

Any Text WCAG AAA × Fail

Black Background



This preview shows how the CIELCh color 63, 16.458, 5.480 looks on a black background.

Color Contrast Check

Large Text (above 18pt) WCAG AA ✓ Pass

Any Text WCAG AA ✓ Pass

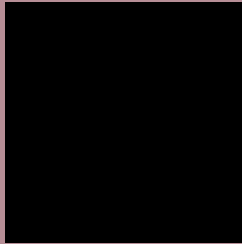
Large Text (above 18pt) WCAG AAA ✓ Pass

Any Text WCAG AAA ✓ Pass

If you want to check with other color combinations, try the [Color Contrast Checker](#).

CIELCh 63, 16.458, 5.480

Background



This preview shows how black text looks on a background with the CIELCh color 63, 16.458, 5.480.



This preview shows how white text looks on a background with the CIELCh color 63, 16.458, 5.480.

Color Blindness Simulation

Color vision deficiency is a very complex topic, and I could not describe the different causes any better than Wikipedia does, so if you want to learn more, you should check out their [article about color blindness](#).

Dichromacy



Original Color


63, 16.458, 5.480

Protanopia

63, 2.379, 309.136

Deuteranopia

63, 8.304, 16.329



Tritanopia
63, 17.246, 0.500

Trichromacy



Original Color
63, 16.458, 5.480

Protanomaly
63, 7.072, 351.808

Deuteranomaly
63, 11.212, 11.956

Tritanomaly
63, 17.095, 2.271

Monochromacy



Original Color
63, 16.458, 5.480

Achromatopsia
64, 0.008, 296.813

Achromatomaly
63, 6.083, 4.012

CSS Examples

Text

The CSS property to change the color of the text to CIELCh 63, 16.458, 5.480 is called "color". The color property can be set on classes, ids or directly on the HTML element.

This example shows how text in the color `rgb(182, 142, 150)` looks like.

```
.text, #text, p{  
    color:rgb(182, 142, 150)  
}
```

If you want to add a text shadow in that color use the text-shadow property, you can generate a text shadow directly with our [CSS Text Shadow Generator](#).

Here you see how black text with a 4 pixel rgb(182, 142, 150) colored shadow looks like.

```
.shadow{ text-shadow: 4px 4px 2px rgb(182, 142, 150) }
```

Border

The CSS property to change the border of an element to CIELCh 63, 16.458, 5.480 is called "border". The border property can be set on classes, ids or directly on the HTML element.

This example shows the color as border, it can be applied via the CSS property "border" or "border-color".

```
.border, #border, table{ border:4px solid rgb(182, 142, 150) }
```

If only the border color should be changed use the property `border-color`.

```
.border{ border-color:rgb(182, 142, 150) }
```

If you want to add a box shadow in that color use:

Here you see how a box with a 4 pixel `rgb(182, 142, 150)` colored shadow looks like.

```
.boxshadow{ -moz-box-shadow:4px 4px 4px  
4px rgb(182, 142, 150); -webkit-box-  
shadow:4px 4px 4px 4px rgb(182, 142, 150);  
box-shadow:4px 4px 4px 4px rgb(182, 142,  
150) }
```

Background

The CSS property to change the background color of an element to CIELCh 63, 16.458, 5.480 is called "background". The background property can be set on classes, ids or directly on the HTML element.

```
.background, #background, body{  
background: rgb(182, 142, 150) }
```

If only the background color should be changed can be used:

```
.background{ background-color: rgb(182,  
142, 150) }
```

This example shows the color as background, it is applied via the CSS property "background".

To optimize and compress your CSS code, you can use our [online CSS compressor and optimizer](#) based on csstidy. If you want to create a linear or radial gradient as background or border, check our [CSS Gradient Generator](#).

Hey! You found this booklet interesting? Support Converting Colors with the new Membership Option!

The pro membership hides all ads, plus gives you double the colors in the color bucket, and more awesome pro features!

[Learn more, Memberships starting at \\$2.50/m!](#)

**Follow me
on Twitter!**

@ConvertingColor