

Converting Colors

CIELCh(63, 17.285, 56.219)

Have a look what the booklet for
CIELCh(63, 17.285, 56.219) contains.

CIELCh(63, 17.547, 57.125)	3
<i>Conversions</i>	4
<i>Details</i>	6
<i>Harmonies</i>	11
<i>Previews</i>	20
<i>Color Blindness Simulation</i>	23
<i>CSS Examples</i>	26

Color

CIELCh(63, 17.547, 57.125)

Conversions

Conversions Part 1

Format	Color
Hex	B3927F
RGB	179, 146, 127
RGB Percent	70%, 57%, 50%
CMY	0.2988, 0.4282, 0.5027
CMYK	0.00, 0.18, 0.29, 0.30
HSL	22°, 25%, 60%
HSV	22°, 29%, 70%
XYZ	32.6128, 31.5869, 24.3936
YIQ	153.7010, 25.7670, 1.0870

Conversions

Conversions Part 2

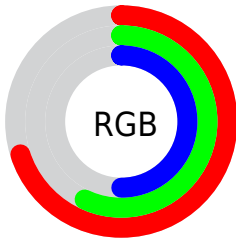
Format	Color
RYB	179, 157, 127
Decimal	11768447
CIELab	63.00, 9.52, 14.74
CIElCh	63, 17.547, 57.125
Yxy	31.5869, 0.3681, 0.3565
Android (android.graphics.Color)	4289958527 (0xFFB3927F)
YUV	153.7010, -13.1636, 22.1872
Hunter-Lab	56.2022, 5.2254, 13.6078

Details

The CIELCh color $63, 17.547, 57.125$ is a light color, and the websafe version is hex `CC9999`. A complement of this color would be $64, 15.168, 243.281$, and the grayscale version is $63, 0.008, 296.813$.

A 20% lighter version of the original color is $83, 17.321, 57.350$, and $43, 17.382, 56.147$ is the 20% darker color. If you saturate the color by 10%, you get $60, 24.418, 56.359$, and if you desaturate by 10%, it is $66, 11.122, 57.953$.

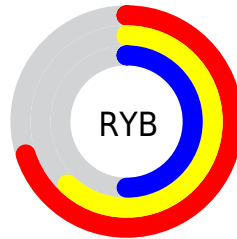
Distribution



Red (70%)

Green (57%)

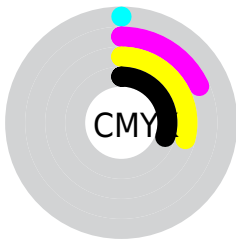
Blue (50%)



Red (70%)

Yellow (62%)

Blue (50%)

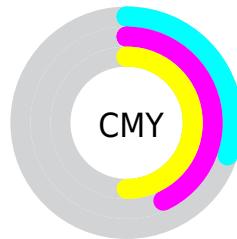


Cyan (0%)

Magenta (18%)

Yellow (29%)

Black (30%)



Cyan (30%)

Magenta (43%)

Yellow (50%)

Brightness & Saturation Gradients

These gradients show how the CIELCh color 63, 17.547, 57.125 changes by changing the brightness by 10 percent. The first figure shows a shift by +10% for each color and the second figure -10%.

Similar to the brightness gradients but the following saturation gradients show a change of the CIELCh color 63, 17.547, 57.125 by changing the saturation by 10% instead.

■ 63, 17.547, 57.125

■ 63, 17.547, 57.125

■ 100, 17.547,
57.125

■ 53, 17.547, 57.125

■ 83, 17.547, 57.125

■ 43, 17.547, 57.125

■ 93, 17.547, 57.125

■ 33, 17.547, 57.125

■ 23, 17.547, 57.125

■ 13, 17.547, 57.125

■ 3, 17.547, 57.125

■ 0, 17.547, 57.125

■ 63, 17.547, 57.125

■ 63, 17.547, 57.125

■ 60, 24.418, 56.359

■ 66, 11.122, 57.953

57, 31.745, 55.647

70, 5.116, 58.781

54, 39.495, 54.997

73, 0.511, 240.604

51, 47.550, 54.374

77, 5.798, 240.745

48, 55.618, 53.677

80, 10.784,
241.618

46, 63.067, 52.652

84, 15.505,
242.504

44, 69.229, 51.139

87, 19.994,
243.378

43, 69.824, 51.049

90, 20.405,
226.517

93, 22.219,
207.596

Harmonies

Complementary

The Complementary color scheme is a pair of colors which are on the opposite of each other on the color wheel.



63, 17.547, 57.125



64, 15.168, 243.281

Rectangle

The Rectangle color scheme consists of four colors that form a rectangle on the color wheel.



63, 17.547, 57.125



63, 17.547, 107.125



63, 17.547, 237.125



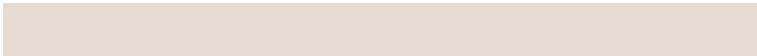
63, 17.547, 287.125

Sweetspot

The Sweet Spot groups the original color and five complimentary colors.



63, 17.547, 57.133



88, 6.273, 58.775



59, 27.398, 338.582



47, 4.416, 58.659



96, 0.011, 296.813



49, 0.007, 296.813

Same Dimension

The Same Dimension uses a secret algorithm to generate beautiful new colors.



63, 17.547, 57.133



77, 26.708, 56.622



70, 24.183, 100.048



36, 3.191, 58.762



37, 61.980, 51.517



4, 7.526, 49.354

Inverse Universe

The Inverse Universe completely reimagines the original color for something new.



64, 15.168, 243.281



79, 22.230, 244.419



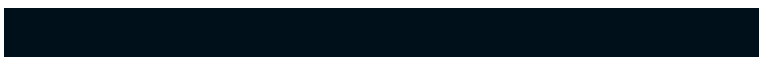
57, 25.280, 287.127



36, 3.063, 240.684



39, 37.199, 266.472



4, 7.885, 252.705

Previews

White Background



This preview shows how the CIELCh color 63, 17.547, 57.125 looks on a white background.

Color Contrast Check

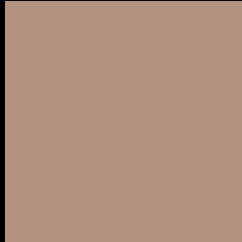
Large Text (above 18pt) WCAG AA × Fail

Any Text WCAG AA × Fail

Large Text (above 18pt) WCAG AAA × Fail

Any Text WCAG AAA × Fail

Black Background



This preview shows how the CIELCh color 63, 17.547, 57.125 looks on a black background.

Color Contrast Check

Large Text (above 18pt) WCAG AA ✓ Pass

Any Text WCAG AA ✓ Pass

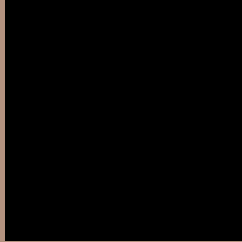
Large Text (above 18pt) WCAG AAA ✓ Pass

Any Text WCAG AAA ✓ Pass

If you want to check with other color combinations, try the [Color Contrast Checker](#).

CIELCh 63, 17.547, 57.125

Background



This preview shows how black text looks on a background with the CIELCh color 63, 17.547, 57.125.



This preview shows how white text looks on a background with the CIELCh color 63, 17.547, 57.125.

Color Blindness Simulation

Color vision deficiency is a very complex topic, and I could not describe the different causes any better than Wikipedia does, so if you want to learn more, you should check out their [article about color blindness](#).

Dichromacy



Original Color

63, 17.547, 57.125

Protanopia

63, 12.781, 92.075

Deuteranopia

63, 16.578, 62.030



Tritanopia
63, 16.872, 359.965

Trichromacy



Original Color
63, 17.547, 57.125

Protanomaly
63, 13.672, 78.013

Deuteranomaly
63, 16.900, 61.077

Tritanomaly
63, 15.345, 20.905

Monochromacy



Original Color
63, 17.547, 57.125

Achromatopsia
64, 0.008, 296.813

Achromatomaly
63, 6.148, 58.931

CSS Examples

Text

The CSS property to change the color of the text to CIELCh 63, 17.547, 57.125 is called "color". The color property can be set on classes, ids or directly on the HTML element.

This example shows how text in the color `rgb(179, 146, 127)` looks like.

```
.text, #text, p{  
    color:rgb(179, 146, 127)  
}
```

If you want to add a text shadow in that color use the text-shadow property, you can generate a text shadow directly with our [CSS Text Shadow Generator](#).

Here you see how black text with a 4 pixel rgb(179, 146, 127) colored shadow looks like.

```
.shadow{ text-shadow: 4px 4px 2px rgb(179, 146, 127) }
```

Border

The CSS property to change the border of an element to CIELCh 63, 17.547, 57.125 is called "border". The border property can be set on classes, ids or directly on the HTML element.

This example shows the color as border, it can be applied via the CSS property "border" or "border-color".

```
.border, #border, table{ border:4px solid rgb(179, 146, 127) }
```

If only the border color should be changed use the property border-color.

```
.border{ border-color:rgb(179, 146, 127) }
```

If you want to add a box shadow in that color use:

Here you see how a box with a 4 pixel rgb(179, 146, 127) colored shadow looks like.

```
.boxshadow{ -moz-box-shadow:4px 4px 4px  
4px rgb(179, 146, 127); -webkit-box-  
shadow:4px 4px 4px 4px rgb(179, 146, 127);  
box-shadow:4px 4px 4px 4px rgb(179, 146,  
127) }
```

Background

The CSS property to change the background color of an element to CIELCh 63, 17.547, 57.125 is called "background". The background property can be set on classes, ids or directly on the HTML element.

```
.background, #background, body{  
background: rgb(179, 146, 127) }
```

If only the background color should be changed can be used:

```
.background{ background-color: rgb(179,  
146, 127) }
```

This example shows the color as background, it is applied via the CSS property "background".

To optimize and compress your CSS code, you can use our [online CSS compressor and optimizer](#) based on csstidy. If you want to create a linear or radial gradient as background or border, check our [CSS Gradient Generator](#).

Hey! You found this booklet interesting? Support Converting Colors with the new Membership Option!

The pro membership hides all ads, plus gives you double the colors in the color bucket, and more awesome pro features!

[Learn more, Memberships starting at \\$2.50/m!](#)

**Follow me
on Twitter!**

@ConvertingColor