

Converting Colors

CIELCh(63, 24.337, 21.892)

Have a look what the booklet for
CIELCh(63, 24.337, 21.892) contains.

CIELCh(63, 24.309, 21.903)	3
<i>Conversions</i>	4
<i>Details</i>	6
<i>Harmonies</i>	11
<i>Previews</i>	20
<i>Color Blindness Simulation</i>	23
<i>CSS Examples</i>	26

Color

CIELCh(63, 24.309, 21.903)

Conversions

Conversions Part 1

Format	Color
Hex	C48989
RGB	196, 137, 137
RGB Percent	77%, 54%, 54%
CMY	0.2300, 0.4614, 0.4614
CMYK	0.00, 0.30, 0.30, 0.23
HSL	0°, 33%, 65%
HSV	0°, 30%, 77%
XYZ	36.3919, 31.5869, 27.9707
YIQ	154.6410, 35.1640, 12.5080

Conversions

Conversions Part 2

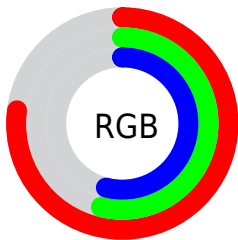
Format	Color
RYB	196, 137, 137
Decimal	12880265
CIELab	63.00, 22.55, 9.07
CIElCh	63, 24.309, 21.903
Yxy	31.5869, 0.3793, 0.3292
Android (android.graphics.Color)	4291070345 (0xFFC48989)
YUV	154.6410, -8.6970, 36.2718
Hunter-Lab	56.2022, 17.2279, 9.8341

Details

The CIELCh color **63, 24.309, 21.903** is a light color, and the websafe version is hex **CC9999**. A complement of this color would be **75, 19.814, 197.942**, and the grayscale version is **64, 0.008, 296.813**.

A 20% lighter version of the original color is **83, 24.331, 22.562**, and **43, 24.261, 22.870** is the 20% darker color. If you saturate the color by 10%, you get **58, 33.557, 23.296**, and if you desaturate by 10%, it is **68, 15.617, 20.838**.

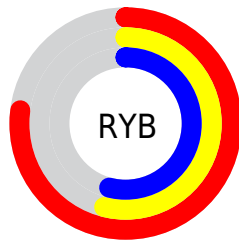
Distribution



Red (77%)

Green (54%)

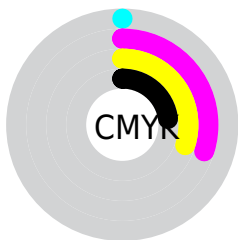
Blue (54%)



Red (77%)

Yellow (54%)

Blue (54%)

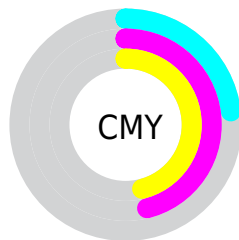


Cyan (0%)

Magenta (30%)

Yellow (30%)

Black (23%)



Cyan (23%)

Magenta (46%)

Yellow (46%)

Brightness & Saturation Gradients

These gradients show how the CIELCh color 63, 24.309, 21.903 changes by changing the brightness by 10 percent. The first figure shows a shift by +10% for each color and the second figure -10%.

Similar to the brightness gradients but the following saturation gradients show a change of the CIELCh color 63, 24.309, 21.903 by changing the saturation by 10% instead.

63, 24.309, 21.903

63, 24.309, 21.903

100, 24.309,
21.903

53, 24.309, 21.903

83, 24.309, 21.903

43, 24.309, 21.903

93, 24.309, 21.903

33, 24.309, 21.903

23, 24.309, 21.903

13, 24.309, 21.903

3, 24.309, 21.903

0, 24.309, 21.903

63, 24.309, 21.903

63, 24.309, 21.903

58, 33.557, 23.296

68, 15.617, 20.838

53, 43.244, 25.107

74, 7.532, 19.986

49, 53.156, 27.450

79, 0.046, 7.633

46, 62.980, 30.393

85, 6.878, 199.008

43, 72.275, 33.848

91, 13.290,
198.576

42, 80.225, 37.312

96, 19.204,
198.238

41, 85.902, 40.001

Harmonies

Complementary

The Complementary color scheme is a pair of colors which are on the opposite of each other on the color wheel.



63, 24.309, 21.903



75, 19.814, 197.942

Rectangle

The Rectangle color scheme consists of four colors that form a rectangle on the color wheel.



63, 24.309, 21.903



63, 24.309, 71.903



63, 24.309, 201.903



63, 24.309, 251.903

Sweetspot

The Sweet Spot groups the original color and five complimentary colors.



63, 24.307, 21.908



94, 8.299, 19.913



65, 38.825, 326.059



49, 5.800, 20.030



0, 0.000, 0.000



53, 0.007, 296.813

Same Dimension

The Same Dimension uses a secret algorithm to generate beautiful new colors.



63, 24.307, 21.908



76, 36.838, 22.768



70, 20.308, 71.701



39, 4.278, 19.933



34, 74.643, 39.778



3, 15.883, 19.412

Inverse Universe

The Inverse Universe completely reimagines the original color for something new.



75, 19.814, 197.942



95, 28.557, 197.670



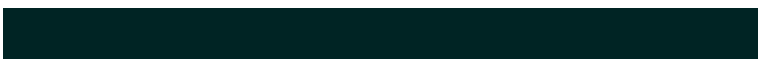
67, 18.697, 260.113



41, 4.034, 198.990



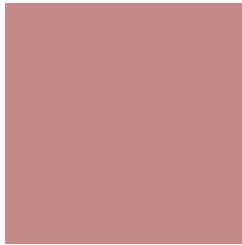
61, 35.882, 196.406



12, 12.982, 196.402

Previews

White Background



This preview shows how the CIELCh color 63, 24.309, 21.903 looks on a white background.

Color Contrast Check

Large Text (above 18pt) WCAG AA × Fail

Any Text WCAG AA × Fail

Large Text (above 18pt) WCAG AAA × Fail

Any Text WCAG AAA × Fail

Black Background



This preview shows how the CIE LCh color 63, 24.309, 21.903 looks on a black background.

Color Contrast Check

Large Text (above 18pt) WCAG AA ✓ Pass

Any Text WCAG AA ✓ Pass

Large Text (above 18pt) WCAG AAA ✓ Pass

Any Text WCAG AAA ✓ Pass

If you want to check with other color combinations, try the [Color Contrast Checker](#).

CIELCh 63, 24.309, 21.903

Background



This preview shows how black text looks on a background with the CIELCh color 63, 24.309, 21.903.



This preview shows how white text looks on a background with the CIELCh color 63, 24.309, 21.903.

Color Blindness Simulation

Color vision deficiency is a very complex topic, and I could not describe the different causes any better than Wikipedia does, so if you want to learn more, you should check out their [article about color blindness](#).

Dichromacy



Original Color

63, 24.309, 21.903

Protanopia

63, 4.354, 82.872

Deuteranopia

63, 12.677, 48.996



Tritanopia
63, 25.085, 9.447

Trichromacy



Original Color
63, 24.309, 21.903

Protanomaly
63, 10.056, 36.246

Deuteranomaly
63, 16.556, 34.382

Tritanomaly
63, 24.979, 13.217

Monochromacy



Original Color
63, 24.309, 21.903

Achromatopsia
64, 0.008, 296.813

Achromatomaly
64, 8.294, 20.148

CSS Examples

Text

The CSS property to change the color of the text to CIELCh 63, 24.309, 21.903 is called "color". The color property can be set on classes, ids or directly on the HTML element.

This example shows how text in the color `rgb(196, 137, 137)` looks like.

```
.text, #text, p{  
    color:rgb(196, 137, 137)  
}
```

If you want to add a text shadow in that color use the text-shadow property, you can generate a text shadow directly with our [CSS Text Shadow Generator](#).

Here you see how black text with a 4 pixel rgb(196, 137, 137) colored shadow looks like.

```
.shadow{ text-shadow: 4px 4px 2px rgb(196, 137, 137) }
```

Border

The CSS property to change the border of an element to CIELCh 63, 24.309, 21.903 is called "border". The border property can be set on classes, ids or directly on the HTML element.

This example shows the color as border, it can be applied via the CSS property "border" or "border-color".

```
.border, #border, table{ border:4px solid rgb(196, 137, 137) }
```

If only the border color should be changed use the property border-color.

```
.border{ border-color:rgb(196, 137, 137) }
```

If you want to add a box shadow in that color use:

Here you see how a box with a 4 pixel rgb(196, 137, 137) colored shadow looks like.

```
.boxshadow{ -moz-box-shadow:4px 4px 4px  
4px rgb(196, 137, 137); -webkit-box-  
shadow:4px 4px 4px 4px rgb(196, 137, 137);  
box-shadow:4px 4px 4px 4px rgb(196, 137,  
137) }
```

Background

The CSS property to change the background color of an element to CIELCh 63, 24.309, 21.903 is called "background". The background property can be set on classes, ids or directly on the HTML element.

```
.background, #background, body{  
background: rgb(196, 137, 137) }
```

If only the background color should be changed can be used:

```
.background{ background-color: rgb(196,  
137, 137) }
```

This example shows the color as background, it is applied via the CSS property "background".

To optimize and compress your CSS code, you can use our [online CSS compressor and optimizer](#) based on csstidy. If you want to create a linear or radial gradient as background or border, check our [CSS Gradient Generator](#).

Hey! You found this booklet interesting? Support Converting Colors with the new Membership Option!

The pro membership hides all ads, plus gives you double the colors in the color bucket, and more awesome pro features!

[Learn more, Memberships starting at \\$2.50/m!](#)

**Follow me
on Twitter!**

@ConvertingColor