

Converting Colors

CIELCh(63, 37.776, 62.239)

Have a look what the booklet for
CIELCh(63, 37.776, 62.239) contains.

CIELCh(63, 37.592, 62.650)	3
<i>Conversions</i>	4
<i>Details</i>	6
<i>Harmonies</i>	11
<i>Previews</i>	20
<i>Color Blindness Simulation</i>	23
<i>CSS Examples</i>	26

Color

CIELCh(63, 37.592, 62.650)

Conversions

Conversions Part 1

Format	Color
Hex	C78C5E
RGB	199, 140, 94
RGB Percent	78%, 55%, 37%
CMY	0.2207, 0.4520, 0.6323
CMYK	0.00, 0.30, 0.53, 0.22
HSL	26°, 48%, 57%
HSV	26°, 53%, 78%
XYZ	34.8262, 31.5869, 14.7933
YIQ	152.3970, 49.9300, -1.7980

Conversions

Conversions Part 2

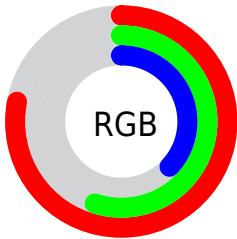
Format	Color
RYB	199, 176, 94
Decimal	13077598
CIELab	63.00, 17.27, 33.39
CIElCh	63, 37.592, 62.650
Yxy	31.5869, 0.4289, 0.3890
Android (android.graphics.Color)	4291267678 (0xFFC78C5E)
YUV	152.3970, -28.7897, 40.8708
Hunter-Lab	56.2022, 12.2550, 23.7355

Details

The CIELCh color **63, 37.592, 62.650** is a dark color, and the websafe version is hex **CC9966**. The color can be described as middle muted orange. A complement of this color would be **61, 30.217, 258.279**, and the grayscale version is **63, 0.008, 296.813**.

A 20% lighter version of the original color is **83, 36.687, 64.370**, and **43, 37.751, 63.153** is the 20% darker color. If you saturate the color by 10%, you get **60, 45.866, 61.590**, and if you desaturate by 10%, it is **66, 29.626, 63.716**.

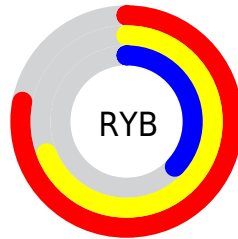
Distribution



Red (78%)

Green (55%)

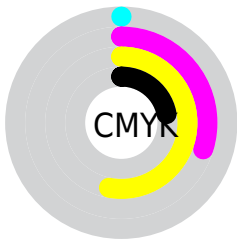
Blue (37%)



Red (78%)

Yellow (69%)

Blue (37%)

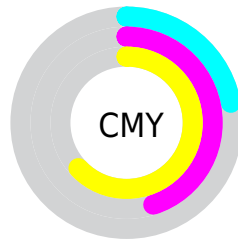


Cyan (0%)

Magenta (30%)

Yellow (53%)

Black (22%)



Cyan (22%)

Magenta (45%)

Yellow (63%)

Brightness & Saturation Gradients

These gradients show how the CIELCh color 63, 37.592, 62.650 changes by changing the brightness by 10 percent. The first figure shows a shift by +10% for each color and the second figure -10%.

Similar to the brightness gradients but the following saturation gradients show a change of the CIELCh color 63, 37.592, 62.650 by changing the saturation by 10% instead.

63, 37.592, 62.650

63, 37.592, 62.650

100, 37.592,
62.650

53, 37.592, 62.650

83, 37.592, 62.650

43, 37.592, 62.650

93, 37.592, 62.650

33, 37.592, 62.650

23, 37.592, 62.650

13, 37.592, 62.650

3, 37.592, 62.650

0, 37.592, 62.650

63, 37.592, 62.650

63, 37.592, 62.650

60, 45.866, 61.590

66, 29.626, 63.716

57, 54.229, 60.460

69, 22.053, 64.794

55, 62.204, 59.110

72, 14.893, 65.885

52, 68.905, 57.224

76, 8.130, 66.973

51, 72.804, 55.589

79, 1.734, 67.895

83, 4.329, 249.330

86, 10.096,
250.356

90, 15.600,
251.396

92, 15.395,
228.564

Harmonies

Complementary

The Complementary color scheme is a pair of colors which are on the opposite of each other on the color wheel.



63, 37.592, 62.650



61, 30.217, 258.279

Rectangle

The Rectangle color scheme consists of four colors that form a rectangle on the color wheel.



63, 37.592, 62.650



63, 37.592, 112.650



63, 37.592, 242.650



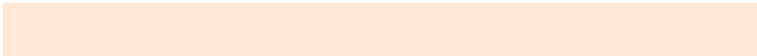
63, 37.592, 292.650

Sweetspot

The Sweet Spot groups the original color and five complimentary colors.



63, 37.591, 62.655



93, 12.547, 66.604



54, 50.310, 345.422



49, 8.522, 66.376



0, 0.000, 0.000



53, 0.007, 296.813

Same Dimension

The Same Dimension uses a secret algorithm to generate beautiful new colors.



63, 37.591, 62.655



75, 56.466, 61.470



76, 50.703, 101.985



40, 3.564, 67.335



42, 62.653, 56.172



7, 13.010, 50.421

Inverse Universe

The Inverse Universe completely reimagines the original color for something new.



61, 30.217, 258.279



72, 43.213, 261.840



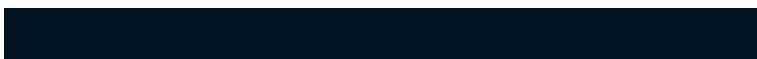
47, 57.792, 295.559



40, 3.455, 249.639



38, 45.233, 276.806



6, 13.044, 264.281

Previews

White Background



This preview shows how the CIELCh color 63, 37.592, 62.650 looks on a white background.

Color Contrast Check

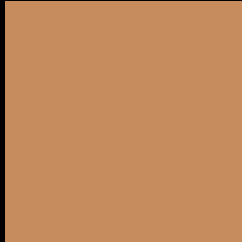
Large Text (above 18pt) WCAG AA × Fail

Any Text WCAG AA × Fail

Large Text (above 18pt) WCAG AAA × Fail

Any Text WCAG AAA × Fail

Black Background



This preview shows how the CIELCh color 63, 37.592, 62.650 looks on a black background.

Color Contrast Check

Large Text (above 18pt) WCAG AA ✓ Pass

Any Text WCAG AA ✓ Pass

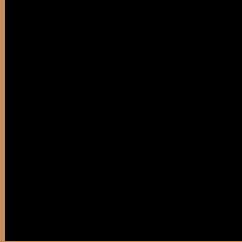
Large Text (above 18pt) WCAG AAA ✓ Pass

Any Text WCAG AAA ✓ Pass

If you want to check with other color combinations, try the [Color Contrast Checker](#).

CIELCh 63, 37.592, 62.650

Background



This preview shows how black text looks on a background with the CIELCh color 63, 37.592, 62.650.



This preview shows how white text looks on a background with the CIELCh color 63, 37.592, 62.650.

Color Blindness Simulation

Color vision deficiency is a very complex topic, and I could not describe the different causes any better than Wikipedia does, so if you want to learn more, you should check out their [article about color blindness](#).

Dichromacy



Original Color
63, 37.592, 62.650

Protanopia
63, 30.274, 96.100

Deuteranopia
63, 34.978, 76.948



Tritanopia
63, 28.837, 10.511

Trichromacy



Original Color
63, 37.592, 62.650

Protanomaly
63, 31.404, 82.058

Deuteranomaly
63, 35.509, 71.599

Tritanomaly
63, 28.544, 32.103

Monochromacy



Original Color
63, 37.592, 62.650

Achromatopsia
63, 0.008, 296.813

Achromatomaly
63, 12.882, 66.971

CSS Examples

Text

The CSS property to change the color of the text to CIELCh 63, 37.592, 62.650 is called "color". The color property can be set on classes, ids or directly on the HTML element.

This example shows how text in the color `rgb(199, 140, 94)` looks like.

```
.text, #text, p{  
    color:rgb(199, 140, 94)  
}
```

If you want to add a text shadow in that color use the text-shadow property, you can generate a text shadow directly with our [CSS Text Shadow Generator](#).

Here you see how black text with a 4 pixel rgb(199, 140, 94) colored shadow looks like.

```
.shadow{ text-shadow: 4px 4px 2px rgb(199, 140, 94) }
```

Border

The CSS property to change the border of an element to CIELCh 63, 37.592, 62.650 is called "border". The border property can be set on classes, ids or directly on the HTML element.

This example shows the color as border, it can be applied via the CSS property "border" or "border-color".

```
.border, #border, table{ border:4px solid rgb(199, 140, 94) }
```

If only the border color should be changed use the property `border-color`.

```
.border{ border-color:rgb(199, 140, 94) }
```

If you want to add a box shadow in that color use:

Here you see how a box with a 4 pixel `rgb(199, 140, 94)` colored shadow looks like.

```
.boxshadow{ -moz-box-shadow:4px 4px 4px  
4px rgb(199, 140, 94); -webkit-box-  
shadow:4px 4px 4px 4px rgb(199, 140, 94);  
box-shadow:4px 4px 4px 4px rgb(199, 140,  
94) }
```

Background

The CSS property to change the background color of an element to CIELCh 63, 37.592, 62.650 is called "background". The background property can be set on classes, ids or directly on the HTML element.

```
.background, #background, body{  
background: rgb(199, 140, 94) }
```

If only the background color should be changed can be used:

```
.background{ background-color: rgb(199,  
140, 94) }
```

This example shows the color as background, it is applied via the CSS property "background".

To optimize and compress your CSS code, you can use our [online CSS compressor and optimizer](#) based on csstidy. If you want to create a linear or radial gradient as background or border, check our [CSS Gradient Generator](#).

Hey! You found this booklet interesting? Support Converting Colors with the new Membership Option!

The pro membership hides all ads, plus gives you double the colors in the color bucket, and more awesome pro features!

[Learn more, Memberships starting at \\$2.50/m!](#)

**Follow me
on Twitter!**

@ConvertingColor