

Converting Colors

CIELCh(63, 48.511, 2.563)

Have a look what the booklet for
CIELCh(63, 48.511, 2.563) contains.

CIELCh(63, 48.532, 2.657)	3
<i>Conversions</i>	4
<i>Details</i>	6
<i>Harmonies</i>	11
<i>Previews</i>	20
<i>Color Blindness Simulation</i>	23
<i>CSS Examples</i>	26

Color

CIELCh(63, 48.532, 2.657)

Conversions

Conversions Part 1

Format	Color
Hex	E77396
RGB	231, 115, 150
RGB Percent	91%, 45%, 59%
CMY	0.0928, 0.5478, 0.4106
CMYK	0.00, 0.50, 0.35, 0.09
HSL	342°, 71%, 68%
HSV	342°, 50%, 91%
XYZ	44.7577, 31.5869, 32.7165
YIQ	153.6740, 57.9010, 35.4770

Conversions

Conversions Part 2

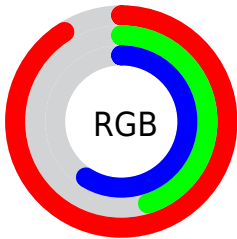
Format	Color
R_{YB}	231, 115, 150
Decimal	15168406
CIE _{Lab}	63.00, 48.48, 2.25
CIE _{LCh}	63, 48.532, 2.657
Yxy	31.5869, 0.4104, 0.2896
Android (android.graphics.Color)	4293358486 (0xFFE77396)
YUV	153.6740, -1.8113, 67.8149
Hunter-Lab	56.2022, 43.7977, 4.8276

Details

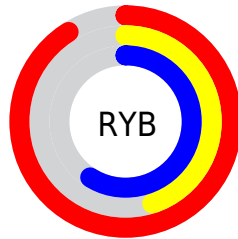
The CIELCh color $63, 48.532, 2.657$ is a light color, and the websafe version is hex `CC6699`. A complement of this color would be $84, 41.773, 170.382$, and the grayscale version is $64, 0.008, 296.813$.

A 20% lighter version of the original color is $79, 36.091, 352.998$, and $43, 48.662, 2.738$ is the 20% darker color. If you saturate the color by 10%, you get $58, 57.708, 5.019$, and if you desaturate by 10%, it is $68, 38.769, 0.765$.

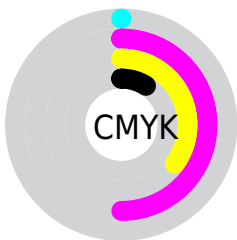
Distribution



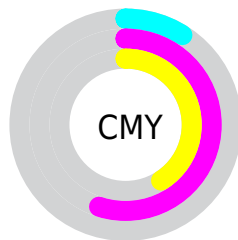
- Red (91%)
- Green (45%)
- Blue (59%)



- Red (91%)
- Yellow (45%)
- Blue (59%)



- Cyan (0%)
- Magenta (50%)
- Yellow (35%)
- Black (9%)



- Cyan (9%)
- Magenta (55%)
- Yellow (41%)

Brightness & Saturation Gradients

These gradients show how the CIELCh color 63, 48.532, 2.657 changes by changing the brightness by 10 percent. The first figure shows a shift by +10% for each color and the second figure -10%.

Similar to the brightness gradients but the following saturation gradients show a change of the CIELCh color 63, 48.532, 2.657 by changing the saturation by 10% instead.

63, 48.532, 2.657

63, 48.532, 2.657

100, 48.532, 2.657

53, 48.532, 2.657

83, 48.532, 2.657

43, 48.532, 2.657

93, 48.532, 2.657

33, 48.532, 2.657

23, 48.532, 2.657

13, 48.532, 2.657

3, 48.532, 2.657

0, 48.532, 2.657

63, 48.532, 2.657

63, 48.532, 2.657

58, 57.708, 5.019

68, 38.769, 0.765

■ 55, 65.852, 8.006

■ 74, 28.819,
359.211

■ 52, 72.573, 11.794

■ 79, 18.960,
357.907

■ 50, 77.746, 16.509

■ 49, 81.801, 21.878

■ 85, 9.371, 356.773

■ 92, 0.146, 352.221

■ 98, 8.674, 175.086

■ 98, 8.077, 198.977

Harmonies

Complementary

The Complementary color scheme is a pair of colors which are on the opposite of each other on the color wheel.



63, 48.532, 2.657



84, 41.773, 170.382

Rectangle

The Rectangle color scheme consists of four colors that form a rectangle on the color wheel.



63, 48.532, 2.657



63, 48.532, 52.657



63, 48.532, 182.657



63, 48.532, 232.657

Sweetspot

The Sweet Spot groups the original color and five complimentary colors.



63, 48.529, 2.659



90, 15.126, 357.315



61, 68.665, 317.310



47, 10.362, 357.557



0, 0.000, 0.000



53, 0.007, 296.813

Same Dimension

The Same Dimension uses a secret algorithm to generate beautiful new colors.



63, 48.529, 2.659



64, 62.274, 5.063



67, 43.397, 38.457



45, 5.199, 356.697



37, 66.991, 20.816



7, 26.660, 8.416

Inverse Universe

The Inverse Universe completely reimagines the original color for something new.



63, 48.529, 2.659



64, 62.274, 5.063



79, 29.492, 220.506



45, 5.199, 356.697



37, 66.991, 20.816



7, 26.660, 8.416

Previews

White Background



This preview shows how the CIELCh color 63, 48.532, 2.657 looks on a white background.

Color Contrast Check

Large Text (above 18pt) WCAG AA × Fail

Any Text WCAG AA × Fail

Large Text (above 18pt) WCAG AAA × Fail

Any Text WCAG AAA × Fail

Black Background



This preview shows how the CIE LCh color 63, 48.532, 2.657 looks on a black background.

Color Contrast Check

Large Text (above 18pt) WCAG AA ✓ Pass

Any Text WCAG AA ✓ Pass

Large Text (above 18pt) WCAG AAA ✓ Pass

Any Text WCAG AAA ✓ Pass

If you want to check with other color combinations, try the [Color Contrast Checker](#).

CIELCh 63, 48.532, 2.657

Background



This preview shows how black text looks on a background with the CIELCh color 63, 48.532, 2.657.

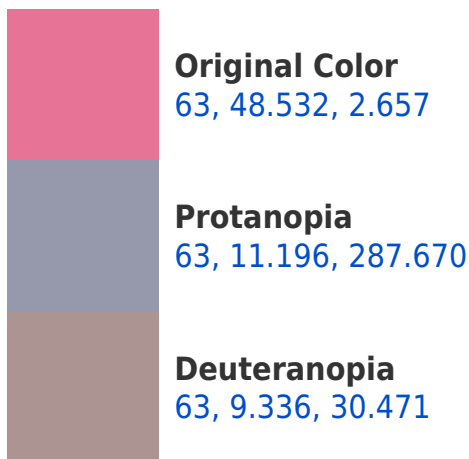


This preview shows how white text looks on a background with the CIELCh color 63, 48.532, 2.657.

Color Blindness Simulation

Color vision deficiency is a very complex topic, and I could not describe the different causes any better than Wikipedia does, so if you want to learn more, you should check out their [article about color blindness](#).

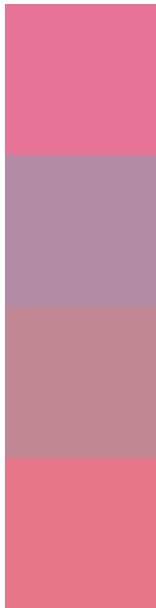
Dichromacy





Tritanopia
63, 45.820, 18.788

Trichromacy



Original Color
63, 48.532, 2.657

Protanomaly
62, 20.975, 339.940

Deuteranomaly
63, 23.566, 7.029

Tritanomaly
63, 46.251, 12.966

Monochromacy



Original Color
63, 48.532, 2.657

Achromatopsia
64, 0.008, 296.813

Achromatomaly
63, 18.005, 357.665

CSS Examples

Text

The CSS property to change the color of the text to CIELCh 63, 48.532, 2.657 is called "color". The color property can be set on classes, ids or directly on the HTML element.

This example shows how text in the color `rgb(231, 115, 150)` looks like.

```
.text, #text, p{  
    color:rgb(231, 115, 150)  
}
```

If you want to add a text shadow in that color use the text-shadow property, you can generate a text shadow directly with our [CSS Text Shadow Generator](#).

Here you see how black text with a 4 pixel rgb(231, 115, 150) colored shadow looks like.

```
.shadow{ text-shadow: 4px 4px 2px rgb(231, 115, 150) }
```

Border

The CSS property to change the border of an element to CIELCh 63, 48.532, 2.657 is called "border". The border property can be set on classes, ids or directly on the HTML element.

This example shows the color as border, it can be applied via the CSS property "border" or "border-color".

```
.border, #border, table{ border:4px solid rgb(231, 115, 150) }
```

If only the border color should be changed use the property `border-color`.

```
.border{ border-color:rgb(231, 115, 150) }
```

If you want to add a box shadow in that color use:

Here you see how a box with a 4 pixel `rgb(231, 115, 150)` colored shadow looks like.

```
.boxshadow{ -moz-box-shadow:4px 4px 4px  
4px rgb(231, 115, 150); -webkit-box-  
shadow:4px 4px 4px 4px rgb(231, 115, 150);  
box-shadow:4px 4px 4px 4px rgb(231, 115,  
150) }
```

Background

The CSS property to change the background color of an element to CIELCh 63, 48.532, 2.657 is called "background". The background property can be set on classes, ids or directly on the HTML element.

```
.background, #background, body{  
background: rgb(231, 115, 150) }
```

If only the background color should be changed can be used:

```
.background{ background-color: rgb(231,  
115, 150) }
```

This example shows the color as background, it is applied via the CSS property "background".

To optimize and compress your CSS code, you can use our [online CSS compressor and optimizer](#) based on csstidy. If you want to create a linear or radial gradient as background or border, check our [CSS Gradient Generator](#).

Hey! You found this booklet interesting? Support Converting Colors with the new Membership Option!

The pro membership hides all ads, plus gives you double the colors in the color bucket, and more awesome pro features!

[Learn more, Memberships starting at \\$2.50/m!](#)

**Follow me
on Twitter!**

@ConvertingColor