

Converting Colors

CIELCh(63, 53.174, 7.614)

Have a look what the booklet for
CIELCh(63, 53.174, 7.614) contains.

CIELCh(63, 53.137, 7.560)	3
<i>Conversions</i>	4
<i>Details</i>	6
<i>Harmonies</i>	11
<i>Previews</i>	20
<i>Color Blindness Simulation</i>	23
<i>CSS Examples</i>	26

Color

CIELCh(63, 53.137, 7.560)

Conversions

Conversions Part 1

Format	Color
Hex	EF6E8E
RGB	239, 110, 142
RGB Percent	94%, 43%, 56%
CMY	0.0614, 0.5674, 0.4420
CMYK	0.00, 0.54, 0.41, 0.06
HSL	345°, 80%, 69%
HSV	345°, 54%, 94%
XYZ	46.2215, 31.5869, 29.3642
YIQ	152.2190, 66.6120, 37.3000

Conversions

Conversions Part 2

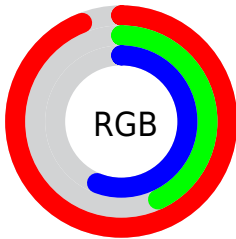
Format	Color
R _{YB}	239, 110, 142
Decimal	15691406
CIE Lab	63.00, 52.68, 6.99
CIE LCh	63, 53.137, 7.560
Yxy	31.5869, 0.4313, 0.2947
Android (android.graphics.Color)	4293881486 (0xFFEF6E8E)
YUV	152.2190, -5.0380, 76.1069
Hunter-Lab	56.2022, 48.4468, 8.3641

Details

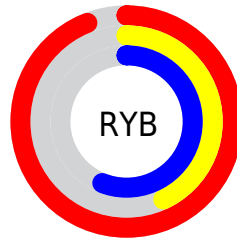
The CIELCh color **63, 53.137, 7.560** is a light color, and the websafe version is hex **FF6699**. A complement of this color would be **87, 43.543, 173.865**, and the grayscale version is **63, 0.008, 296.813**.

A 20% lighter version of the original color is **77, 37.322, 356.996**, and **43, 53.075, 7.593** is the 20% darker color. If you saturate the color by 10%, you get **59, 62.509, 10.291**, and if you desaturate by 10%, it is **68, 43.137, 5.400**.

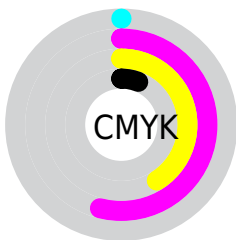
Distribution



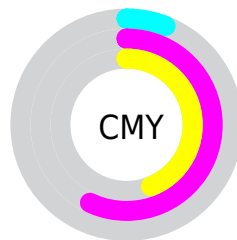
- Red (94%)
- Green (43%)
- Blue (56%)



- Red (94%)
- Yellow (43%)
- Blue (56%)



- Cyan (0%)
- Magenta (54%)
- Yellow (41%)
- Black (6%)



- Cyan (6%)
- Magenta (57%)
- Yellow (44%)

Brightness & Saturation Gradients

These gradients show how the CIELCh color 63, 53.137, 7.560 changes by changing the brightness by 10 percent. The first figure shows a shift by +10% for each color and the second figure -10%.

Similar to the brightness gradients but the following saturation gradients show a change of the CIELCh color 63, 53.137, 7.560 by changing the saturation by 10% instead.

 63, 53.137, 7.560  63, 53.137, 7.560

 100, 53.137, 7.560  53, 53.137, 7.560

 83, 53.137, 7.560  43, 53.137, 7.560

 93, 53.137, 7.560  33, 53.137, 7.560

 23, 53.137, 7.560

 13, 53.137, 7.560

 3, 53.137, 7.560

 0, 53.137, 7.560

 63, 53.137, 7.560  63, 53.137, 7.560

 59, 62.509, 10.291  68, 43.137, 5.400

55, 70.833, 13.754

74, 32.925, 3.658

52, 77.813, 18.092

80, 22.809, 2.225

51, 83.482, 23.301

86, 12.986, 1.012

50, 86.599, 26.666

92, 3.567, 359.879

98, 5.402, 179.259

99, 5.389, 199.187

Harmonies

Complementary

The Complementary color scheme is a pair of colors which are on the opposite of each other on the color wheel.



63, 53.137, 7.560



87, 43.543, 173.865

Rectangle

The Rectangle color scheme consists of four colors that form a rectangle on the color wheel.



63, 53.137, 7.560



63, 53.137, 57.560



63, 53.137, 187.560



63, 53.137, 237.560

Sweetspot

The Sweet Spot groups the original color and five complimentary colors.



63, 53.134, 7.562



89, 15.801, 1.258



62, 76.132, 319.505



46, 10.717, 1.501



0, 0.000, 0.000



53, 0.007, 296.813

Same Dimension

The Same Dimension uses a secret algorithm to generate beautiful new colors.



63, 53.134, 7.562



62, 66.799, 10.700



69, 46.908, 44.402



47, 5.257, 0.521



38, 70.452, 25.624



8, 28.876, 13.236

Inverse Universe

The Inverse Universe completely reimagines the original color for something new.



63, 53.134, 7.562



62, 66.799, 10.700



79, 31.556, 231.267



47, 5.257, 0.521



38, 70.452, 25.624



8, 28.876, 13.236

Previews

White Background



This preview shows how the CIELCh color 63, 53.137, 7.560 looks on a white background.

Color Contrast Check

Large Text (above 18pt) WCAG AA × Fail

Any Text WCAG AA × Fail

Large Text (above 18pt) WCAG AAA × Fail

Any Text WCAG AAA × Fail

Black Background



This preview shows how the CIE LCh color 63, 53.137, 7.560 looks on a black background.

Color Contrast Check

Large Text (above 18pt) WCAG AA ✓ Pass

Any Text WCAG AA ✓ Pass

Large Text (above 18pt) WCAG AAA ✓ Pass

Any Text WCAG AAA ✓ Pass

If you want to check with other color combinations, try the [Color Contrast Checker](#).

CIELCh 63, 53.137, 7.560

Background



This preview shows how black text looks on a background with the CIELCh color 63, 53.137, 7.560.

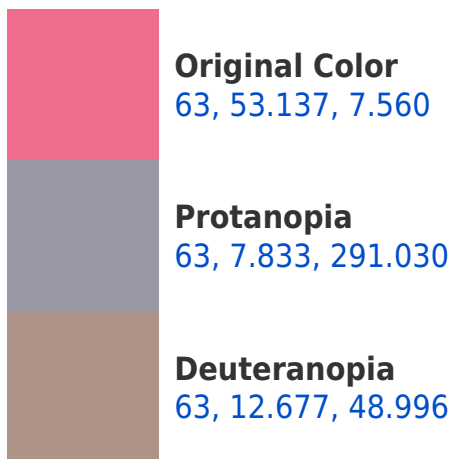


This preview shows how white text looks on a background with the CIELCh color 63, 53.137, 7.560.

Color Blindness Simulation

Color vision deficiency is a very complex topic, and I could not describe the different causes any better than Wikipedia does, so if you want to learn more, you should check out their [article about color blindness](#).

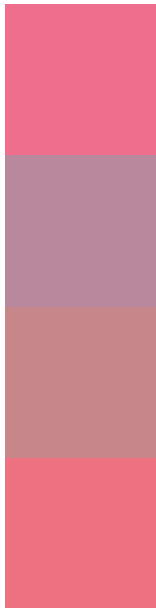
Dichromacy





Tritanopia
63, 51.919, 21.013

Trichromacy



Original Color
63, 53.137, 7.560

Protanomaly
62, 21.372, 350.335

Deuteranomaly
62, 26.313, 17.430

Tritanomaly
63, 51.695, 16.365

Monochromacy



Original Color
63, 53.137, 7.560

Achromatopsia
63, 0.008, 296.813

Achromatomaly
62, 19.775, 1.840

CSS Examples

Text

The CSS property to change the color of the text to CIELCh 63, 53.137, 7.560 is called "color". The color property can be set on classes, ids or directly on the HTML element.

This example shows how text in the color `rgb(239, 110, 142)` looks like.

```
.text, #text, p{  
    color:rgb(239, 110, 142)  
}
```

If you want to add a text shadow in that color use the text-shadow property, you can generate a text shadow directly with our [CSS Text Shadow Generator](#).

Here you see how black text with a 4 pixel rgb(239, 110, 142) colored shadow looks like.

```
.shadow{ text-shadow: 4px 4px 2px rgb(239, 110, 142) }
```

Border

The CSS property to change the border of an element to CIELCh 63, 53.137, 7.560 is called "border". The border property can be set on classes, ids or directly on the HTML element.

This example shows the color as border, it can be applied via the CSS property "border" or "border-color".

```
.border, #border, table{ border:4px solid rgb(239, 110, 142) }
```

If only the border color should be changed use the property `border-color`.

```
.border{ border-color:rgb(239, 110, 142) }
```

If you want to add a box shadow in that color use:

Here you see how a box with a 4 pixel `rgb(239, 110, 142)` colored shadow looks like.

```
.boxshadow{ -moz-box-shadow:4px 4px 4px  
4px rgb(239, 110, 142); -webkit-box-  
shadow:4px 4px 4px 4px rgb(239, 110, 142);  
box-shadow:4px 4px 4px 4px rgb(239, 110,  
142) }
```

Background

The CSS property to change the background color of an element to CIELCh 63, 53.137, 7.560 is called "background". The background property can be set on classes, ids or directly on the HTML element.

```
.background, #background, body{  
background: rgb(239, 110, 142) }
```

If only the background color should be changed can be used:

```
.background{ background-color: rgb(239,  
110, 142) }
```

This example shows the color as background, it is applied via the CSS property "background".

To optimize and compress your CSS code, you can use our [online CSS compressor and optimizer](#) based on csstidy. If you want to create a linear or radial gradient as background or border, check our [CSS Gradient Generator](#).

Hey! You found this booklet interesting? Support Converting Colors with the new Membership Option!

The pro membership hides all ads, plus gives you double the colors in the color bucket, and more awesome pro features!

[Learn more, Memberships starting at \\$2.50/m!](#)

**Follow me
on Twitter!**

@ConvertingColor