

Converting Colors

CIELCh(63, 59.468, 15.570)

Have a look what the booklet for
CIELCh(63, 59.468, 15.570) contains.

CIELCh(63, 59.468, 15.570)	3
<i>Conversions</i>	4
<i>Details</i>	6
<i>Harmonies</i>	11
<i>Previews</i>	20
<i>Color Blindness Simulation</i>	23
<i>CSS Examples</i>	26

Color

CIELCh(63, 59.468, 15.570)

Conversions

Conversions Part 1

Format	Color
Hex	F9687F
RGB	249, 104, 127
RGB Percent	98%, 41%, 50%
CMY	0.0234, 0.5920, 0.5018
CMYK	0.00, 0.58, 0.49, 0.02
HSL	350°, 92%, 69%
HSV	350°, 58%, 98%
XYZ	47.8666, 31.5869, 23.6629
YIQ	149.9770, 79.0370, 37.8930

Conversions

Conversions Part 2

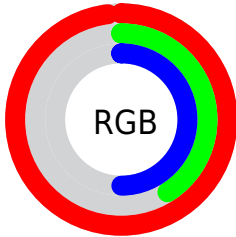
Format	Color
R _Y B	249, 104, 127
Decimal	16345215
CIE Lab	63.00, 57.29, 15.96
CIE LCh	63, 59.468, 15.570
Yxy	31.5869, 0.4642, 0.3063
Android (android.graphics.Color)	4294535295 (0xFFFF9687F)
YUV	149.9770, -11.3277, 86.8432
Hunter-Lab	56.2022, 53.6718, 14.3786

Details

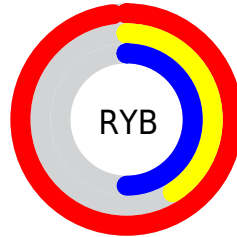
The CIELCh color **63, 59.468, 15.570** is a light color, and the websafe version is hex **FF6699**. A complement of this color would be **90, 44.313, 180.853**, and the grayscale version is **62, 0.008, 296.813**.

A 20% lighter version of the original color is **76, 37.983, 7.005**, and **43, 59.682, 15.768** is the 20% darker color. If you saturate the color by 10%, you get **59, 69.547, 18.748**, and if you desaturate by 10%, it is **68, 48.841, 13.073**.

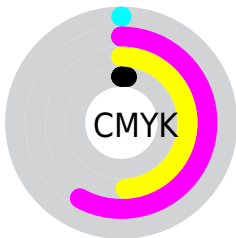
Distribution



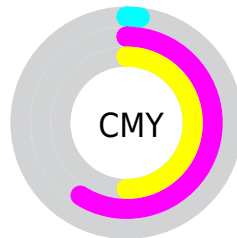
- Red (98%)
- Green (41%)
- Blue (50%)



- Red (98%)
- Yellow (41%)
- Blue (50%)



- Cyan (0%)
- Magenta (58%)
- Yellow (49%)
- Black (2%)



- Cyan (2%)
- Magenta (59%)
- Yellow (50%)


Brightness & Saturation Gradients

These gradients show how the CIELCh color 63, 59.468, 15.570 changes by changing the brightness by 10 percent. The first figure shows a shift by +10% for each color and the second figure -10%.

Similar to the brightness gradients but the following saturation gradients show a change of the CIELCh color 63, 59.468, 15.570 by changing the saturation by 10% instead.

 63, 59.468, 15.570

 63, 59.468, 15.570

 100, 59.468,
15.570

 53, 59.468, 15.570

 83, 59.468, 15.570

 43, 59.468, 15.570

 93, 59.468, 15.570

 33, 59.468, 15.570

 23, 59.468, 15.570

 13, 59.468, 15.570

 3, 59.468, 15.570

 0, 59.468, 15.570

 63, 59.468, 15.570

 63, 59.468, 15.570

 59, 69.547, 18.748

 68, 48.841, 13.073

■ 56, 78.716, 22.720

■ 74, 38.073, 11.100

■ 53, 86.760, 27.461

■ 80, 27.481, 9.522

■ 52, 93.636, 32.567

■ 86, 17.277, 8.230

■ 52, 94.796, 33.395

■ 92, 7.574, 7.127

■ 99, 1.584, 186.706

■ 100, 2.068,
199.594

Harmonies

Complementary

The Complementary color scheme is a pair of colors which are on the opposite of each other on the color wheel.



63, 59.468, 15.570



90, 44.313, 180.853

Rectangle

The Rectangle color scheme consists of four colors that form a rectangle on the color wheel.



63, 59.468, 15.570



63, 59.468, 65.570



63, 59.468, 195.570



63, 59.468, 245.570

Sweetspot

The Sweet Spot groups the original color and five complimentary colors.



63, 59.465, 15.572



89, 16.374, 8.090



64, 84.931, 322.215



46, 11.014, 8.327



0, 0.000, 0.000



53, 0.007, 296.813

Same Dimension

The Same Dimension uses a secret algorithm to generate beautiful new colors.



63, 59.465, 15.572



59, 72.626, 19.426



72, 51.442, 51.950



49, 5.271, 7.263



39, 76.233, 32.471



9, 31.196, 19.636

Inverse Universe

The Inverse Universe completely reimagines the original color for something new.



63, 59.465, 15.572



59, 72.626, 19.426



77, 35.640, 245.358



49, 5.271, 7.263



39, 76.233, 32.471



9, 31.196, 19.636

Previews

White Background



This preview shows how the CIELCh color 63, 59.468, 15.570 looks on a white background.

Color Contrast Check

Large Text (above 18pt) WCAG AA × Fail

Any Text WCAG AA × Fail

Large Text (above 18pt) WCAG AAA × Fail

Any Text WCAG AAA × Fail

Black Background



This preview shows how the CIELCh color 63, 59.468, 15.570 looks on a black background.

Color Contrast Check

Large Text (above 18pt) WCAG AA ✓ Pass

Any Text WCAG AA ✓ Pass

Large Text (above 18pt) WCAG AAA ✓ Pass

Any Text WCAG AAA ✓ Pass

If you want to check with other color combinations, try the [Color Contrast Checker](#).

CIELCh 63, 59.468, 15.570

Background



This preview shows how black text looks on a background with the CIELCh color 63, 59.468, 15.570.

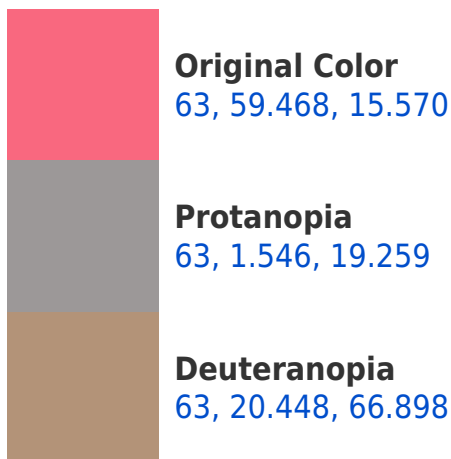


This preview shows how white text looks on a background with the CIELCh color 63, 59.468, 15.570.

Color Blindness Simulation

Color vision deficiency is a very complex topic, and I could not describe the different causes any better than Wikipedia does, so if you want to learn more, you should check out their [article about color blindness](#).

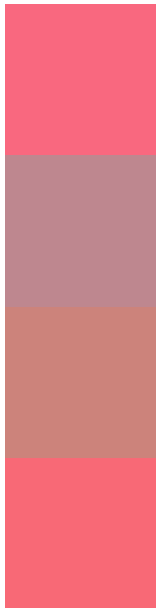
Dichromacy





Tritanopia
63, 59.850, 23.450

Trichromacy



Original Color
63, 59.468, 15.570

Protanomaly
62, 22.603, 10.561

Deuteranomaly
62, 31.555, 30.552

Tritanomaly
63, 59.528, 20.515

Monochromacy



Original Color
63, 59.468, 15.570

Achromatopsia
62, 0.008, 296.813

Achromatomaly
61, 21.915, 8.629

CSS Examples

Text

The CSS property to change the color of the text to CIELCh 63, 59.468, 15.570 is called "color". The color property can be set on classes, ids or directly on the HTML element.

This example shows how text in the color `rgb(249, 104, 127)` looks like.

```
.text, #text, p{  
    color:rgb(249, 104, 127)  
}
```

If you want to add a text shadow in that color use the text-shadow property, you can generate a text shadow directly with our [CSS Text Shadow Generator](#).

Here you see how black text with a 4 pixel rgb(249, 104, 127) colored shadow looks like.

```
.shadow{ text-shadow: 4px 4px 2px rgb(249, 104, 127) }
```

Border

The CSS property to change the border of an element to CIELCh 63, 59.468, 15.570 is called "border". The border property can be set on classes, ids or directly on the HTML element.

This example shows the color as border, it can be applied via the CSS property "border" or "border-color".

```
.border, #border, table{ border:4px solid rgb(249, 104, 127) }
```

If only the border color should be changed use the property `border-color`.

```
.border{ border-color:rgb(249, 104, 127) }
```

If you want to add a box shadow in that color use:

Here you see how a box with a 4 pixel `rgb(249, 104, 127)` colored shadow looks like.

```
.boxshadow{ -moz-box-shadow:4px 4px 4px  
4px rgb(249, 104, 127); -webkit-box-  
shadow:4px 4px 4px 4px rgb(249, 104, 127);  
box-shadow:4px 4px 4px 4px rgb(249, 104,  
127) }
```

Background

The CSS property to change the background color of an element to CIELCh 63, 59.468, 15.570 is called "background". The background property can be set on classes, ids or directly on the HTML element.

```
.background, #background, body{  
background: rgb(249, 104, 127) }
```

If only the background color should be changed can be used:

```
.background{ background-color: rgb(249,  
104, 127) }
```

This example shows the color as background, it is applied via the CSS property "background".

To optimize and compress your CSS code, you can use our [online CSS compressor and optimizer](#) based on csstidy. If you want to create a linear or radial gradient as background or border, check our [CSS Gradient Generator](#).

Hey! You found this booklet interesting? Support Converting Colors with the new Membership Option!

The pro membership hides all ads, plus gives you double the colors in the color bucket, and more awesome pro features!

[Learn more, Memberships starting at \\$2.50/m!](#)

**Follow me
on Twitter!**

@ConvertingColor