

Converting Colors

CIELCh(63, 67.208, 19.155)

Have a look what the booklet for
CIELCh(63, 67.208, 19.155) contains.

CIELCh(62, 65.674, 18.548)	3
<i>Conversions</i>	4
<i>Details</i>	6
<i>Harmonies</i>	11
<i>Previews</i>	20
<i>Color Blindness Simulation</i>	23
<i>CSS Examples</i>	26

Color

CIELCh(62, 65.674, 18.548)

Conversions

Conversions Part 1

Format	Color
Hex	FE5E74
RGB	254, 94, 116
RGB Percent	100%, 37%, 45%
CMY	0.0035, 0.6306, 0.5439
CMYK	0.00, 0.63, 0.54, 0.00
HSL	352°, 99%, 68%
HSV	352°, 63%, 100%
XYZ	48.1076, 30.4025, 19.9486
YIQ	144.3480, 88.2980, 40.7620

Conversions

Conversions Part 2

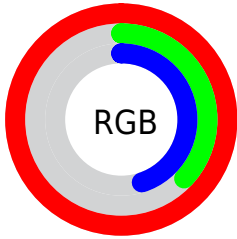
Format	Color
RYB	254, 94, 116
Decimal	16670324
CIELab	62.00, 62.26, 20.89
CIElCh	62, 65.674, 18.548
Yxy	30.4025, 0.4886, 0.3088
Android (android.graphics.Color)	4294860404 (0xFFFE5E74)
YUV	144.3480, -13.9756, 96.1648
Hunter-Lab	55.1385, 59.2466, 17.1464

Details

The CIELCh color **62, 65.674, 18.548** is a light color, and the websafe version is hex **FF6666**. The color can be described as light muted rose. A complement of this color would be **91, 46.736, 182.217**, and the grayscale version is **60, 0.008, 296.813**.

A 20% lighter version of the original color is **74, 41.627, 11.199**, and **42, 65.528, 18.702** is the 20% darker color. If you saturate the color by 10%, you get **58, 75.773, 22.101**, and if you desaturate by 10%, it is **67, 54.898, 15.740**.

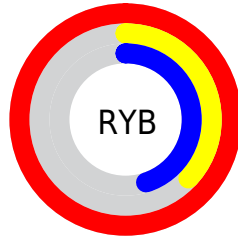
Distribution



Red (100%)

Green (37%)

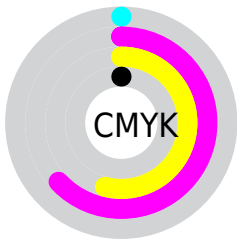
Blue (45%)



Red (100%)

Yellow (37%)

Blue (45%)

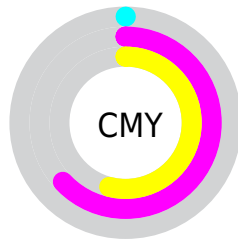


Cyan (0%)

Magenta (63%)

Yellow (54%)

Black (0%)



Cyan (0%)

Magenta (63%)

Yellow (54%)

Brightness & Saturation Gradients

These gradients show how the CIELCh color 62, 65.674, 18.548 changes by changing the brightness by 10 percent. The first figure shows a shift by +10% for each color and the second figure -10%.

Similar to the brightness gradients but the following saturation gradients show a change of the CIELCh color 62, 65.674, 18.548 by changing the saturation by 10% instead.

 62, 65.674, 18.548

 62, 65.674, 18.548

 100, 65.674,
18.548

 52, 65.674, 18.548

 82, 65.674, 18.548

 42, 65.674, 18.548

 92, 65.674, 18.548

 32, 65.674, 18.548

 22, 65.674, 18.548

 12, 65.674, 18.548

 2, 65.674, 18.548

 0, 65.674, 18.548

 62, 65.674, 18.548

 62, 65.674, 18.548

 58, 75.773, 22.101

 67, 54.898, 15.740

■ 55, 84.879, 26.436

■ 72, 43.857, 13.532

■ 54, 92.791, 31.340

■ 78, 32.908, 11.785

■ 53, 97.619, 34.694

■ 84, 22.310, 10.381

■ 91, 12.213, 9.219

■ 98, 2.683, 8.091

100, 0.306,
201.555

Harmonies

Complementary

The Complementary color scheme is a pair of colors which are on the opposite of each other on the color wheel.



62, 65.674, 18.548



91, 46.736, 182.217

Rectangle

The Rectangle color scheme consists of four colors that form a rectangle on the color wheel.



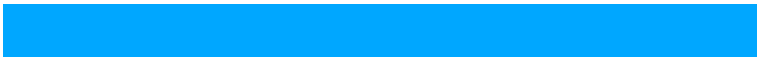
62, 65.674, 18.548



62, 65.674, 68.548



62, 65.674, 198.548



62, 65.674, 248.548

Sweetspot

The Sweet Spot groups the original color and five complimentary colors.



62, 65.671, 18.550



87, 18.332, 9.901



63, 92.198, 322.844



45, 12.722, 10.247



0, 0.000, 0.000



53, 0.007, 296.813

Same Dimension

The Same Dimension uses a secret algorithm to generate beautiful new colors.



62, 65.671, 18.550



57, 78.907, 23.358



72, 57.120, 53.262



50, 5.331, 8.858



40, 78.083, 33.818



10, 32.352, 21.518

Inverse Universe

The Inverse Universe completely reimagines the original color for something new.



62, 65.671, 18.550



57, 78.907, 23.358



76, 38.964, 249.391



50, 5.331, 8.858



40, 78.083, 33.818



10, 32.352, 21.518

Previews

White Background



This preview shows how the CIELCh color 62, 65.674, 18.548 looks on a white background.

Color Contrast Check

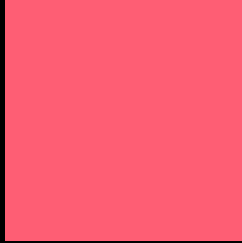
Large Text (above 18pt) WCAG AA × Fail

Any Text WCAG AA × Fail

Large Text (above 18pt) WCAG AAA × Fail

Any Text WCAG AAA × Fail

Black Background



This preview shows how the CIELCh color 62, 65.674, 18.548 looks on a black background.

Color Contrast Check

Large Text (above 18pt) WCAG AA ✓ Pass

Any Text WCAG AA ✓ Pass

Large Text (above 18pt) WCAG AAA ✓ Pass

Any Text WCAG AAA ✓ Pass

If you want to check with other color combinations, try the [Color Contrast Checker](#).

CIELCh 62, 65.674, 18.548

Background



This preview shows how black text looks on a background with the CIELCh color 62, 65.674, 18.548.

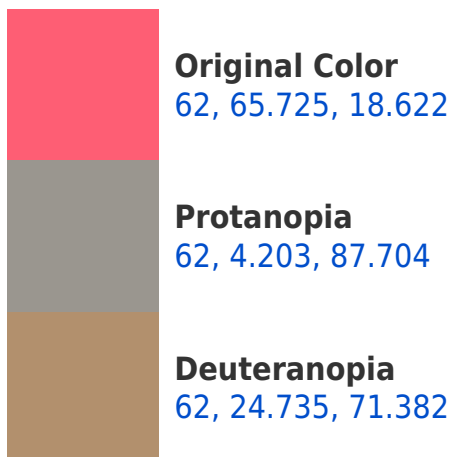


This preview shows how white text looks on a background with the CIELCh color 62, 65.674, 18.548.

Color Blindness Simulation

Color vision deficiency is a very complex topic, and I could not describe the different causes any better than Wikipedia does, so if you want to learn more, you should check out their [article about color blindness](#).

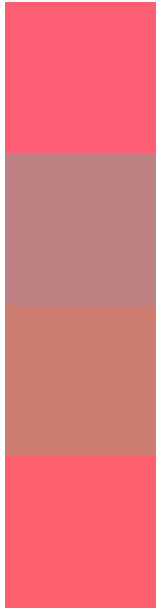
Dichromacy





Tritanopia
62, 66.235, 25.476

Trichromacy



Original Color
62, 65.725, 18.622

Protanomaly
60, 24.819, 18.272

Deuteranomaly
61, 36.056, 35.211

Tritanomaly
62, 65.725, 22.873

Monochromacy



Original Color
62, 65.725, 18.622

Achromatopsia
60, 0.008, 296.813

Achromatomaly
59, 24.079, 11.473

CSS Examples

Text

The CSS property to change the color of the text to CIELCh 62, 65.674, 18.548 is called "color". The color property can be set on classes, ids or directly on the HTML element.

This example shows how text in the color `rgb(254, 94, 116)` looks like.

```
.text, #text, p{  
    color:rgb(254, 94, 116)  
}
```

If you want to add a text shadow in that color use the text-shadow property, you can generate a text shadow directly with our [CSS Text Shadow Generator](#).

Here you see how black text with a 4 pixel rgb(254, 94, 116) colored shadow looks like.

```
.shadow{ text-shadow: 4px 4px 2px rgb(254, 94, 116) }
```

Border

The CSS property to change the border of an element to CIELCh 62, 65.674, 18.548 is called "border". The border property can be set on classes, ids or directly on the HTML element.

This example shows the color as border, it can be applied via the CSS property "border" or "border-color".

```
.border, #border, table{ border:4px solid rgb(254, 94, 116) }
```

If only the border color should be changed use the property `border-color`.

```
.border{ border-color:rgb(254, 94, 116) }
```

If you want to add a box shadow in that color use:

Here you see how a box with a 4 pixel `rgb(254, 94, 116)` colored shadow looks like.

```
.boxshadow{ -moz-box-shadow:4px 4px 4px  
4px rgb(254, 94, 116); -webkit-box-  
shadow:4px 4px 4px 4px rgb(254, 94, 116);  
box-shadow:4px 4px 4px 4px rgb(254, 94,  
116) }
```

Background

The CSS property to change the background color of an element to CIELCh 62, 65.674, 18.548 is called "background". The background property can be set on classes, ids or directly on the HTML element.

```
.background, #background, body{  
background: rgb(254, 94, 116) }
```

If only the background color should be changed can be used:

```
.background{ background-color: rgb(254, 94,  
116) }
```

This example shows the color as background, it is applied via the CSS property "background".

To optimize and compress your CSS code, you can use our [online CSS compressor and optimizer](#) based on csstidy. If you want to create a linear or radial gradient as background or border, check our [CSS Gradient Generator](#).

Hey! You found this booklet interesting? Support Converting Colors with the new Membership Option!

The pro membership hides all ads, plus gives you double the colors in the color bucket, and more awesome pro features!

[Learn more, Memberships starting at \\$2.50/m!](#)

**Follow me
on Twitter!**

@ConvertingColor