

Converting Colors

CIELCh(64, 10.226, 27.701)

Have a look what the booklet for
CIELCh(64, 10.226, 27.701) contains.

CIELCh(64, 10.429, 26.422)	3
<i>Conversions</i>	4
<i>Details</i>	6
<i>Harmonies</i>	11
<i>Previews</i>	20
<i>Color Blindness Simulation</i>	23
<i>CSS Examples</i>	26

Color

CIELCh(64, 10.429, 26.422)

Conversions

Conversions Part 1

Format	Color
Hex	AF9593
RGB	175, 149, 147
RGB Percent	69%, 58%, 58%
CMY	0.3130, 0.4149, 0.4228
CMYK	0.00, 0.15, 0.16, 0.31
HSL	4°, 15%, 63%
HSV	4°, 16%, 69%
XYZ	33.7795, 32.8017, 32.2304
YIQ	156.5460, 16.1380, 4.8900

Conversions

Conversions Part 2

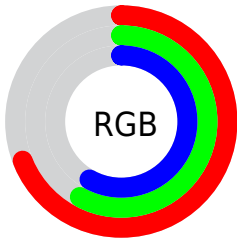
Format	Color
R_{YB}	175, 149, 147
Decimal	11507091
CIE _{Lab}	64.00, 9.34, 4.64
CIE _{LCh}	64, 10.429, 26.422
Yxy	32.8017, 0.3419, 0.3320
Android (android.graphics.Color)	4289697171 (0xFFAF9593)
YUV	156.5460, -4.7062, 16.1842
Hunter-Lab	57.2727, 5.0521, 6.7253

Details

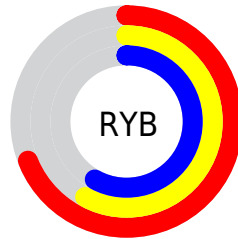
The CIELCh color $64, 10.429, 26.422$ is a light color, and the websafe version is hex 999999 . A complement of this color would be $69, 9.391, 205.444$, and the grayscale version is $65, 0.008, 296.813$.

A 20% lighter version of the original color is $84, 10.536, 25.840$, and $44, 10.395, 23.977$ is the 20% darker color. If you saturate the color by 10%, you get $59, 17.649, 27.086$, and if you desaturate by 10%, it is $69, 3.750, 25.889$.

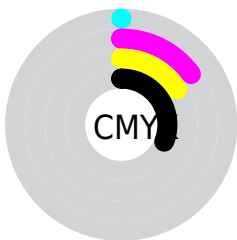
Distribution



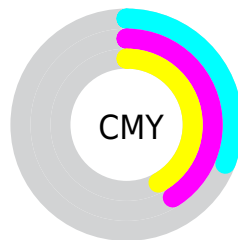
- Red (69%)
- Green (58%)
- Blue (58%)



- Red (69%)
- Yellow (58%)
- Blue (58%)



- Cyan (0%)
- Magenta (15%)
- Yellow (16%)
- Black (31%)



- Cyan (31%)
- Magenta (41%)
- Yellow (42%)

Brightness & Saturation Gradients

These gradients show how the CIELCh color 64, 10.429, 26.422 changes by changing the brightness by 10 percent. The first figure shows a shift by +10% for each color and the second figure -10%.

Similar to the brightness gradients but the following saturation gradients show a change of the CIELCh color 64, 10.429, 26.422 by changing the saturation by 10% instead.

64, 10.429, 26.422

64, 10.429, 26.422

100, 10.429,
26.422

54, 10.429, 26.422

84, 10.429, 26.422

44, 10.429, 26.422

94, 10.429, 26.422

34, 10.429, 26.422

24, 10.429, 26.422

14, 10.429, 26.422

4, 10.429, 26.422

0, 10.429, 26.422

64, 10.429, 26.422

64, 10.429, 26.422

59, 17.649, 27.086

69, 3.750, 25.889

55, 25.422, 27.961

73, 2.416, 205.908

51, 33.715, 29.131

78, 8.117, 205.538

47, 42.438, 30.673

83, 13.399,
205.365

44, 51.420, 32.646

88, 18.313,
205.264

41, 60.371, 35.037

39, 68.752, 37.621

93, 22.902,
205.210

37, 75.463, 39.765

95, 25.333,
197.855

37, 77.861, 40.793

Harmonies

Complementary

The Complementary color scheme is a pair of colors which are on the opposite of each other on the color wheel.



64, 10.429, 26.422



69, 9.391, 205.444

Rectangle

The Rectangle color scheme consists of four colors that form a rectangle on the color wheel.



64, 10.429, 26.422



64, 10.429, 76.422



64, 10.429, 206.422



64, 10.429, 256.422

Sweetspot

The Sweet Spot groups the original color and five complimentary colors.



64, 10.428, 26.432



87, 3.852, 25.830



64, 17.990, 327.166



46, 2.657, 25.876



96, 0.011, 296.813



48, 0.006, 296.813

Same Dimension

The Same Dimension uses a secret algorithm to generate beautiful new colors.



64, 10.428, 26.432



79, 15.506, 26.631



68, 9.968, 80.239



34, 3.564, 26.073



31, 69.014, 40.539



2, 7.367, 24.561

Inverse Universe

The Inverse Universe completely reimagines the original color for something new.



69, 9.391, 205.444



86, 13.635, 205.371



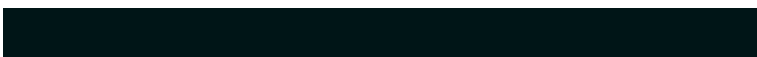
65, 9.733, 264.527



36, 3.360, 205.636



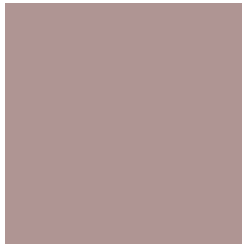
53, 30.922, 208.428



6, 7.078, 208.953

Previews

White Background



This preview shows how the CIELCh color 64, 10.429, 26.422 looks on a white background.

Color Contrast Check

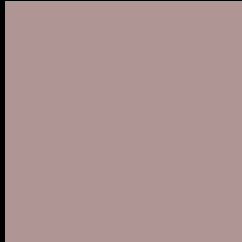
Large Text (above 18pt) WCAG AA × Fail

Any Text WCAG AA × Fail

Large Text (above 18pt) WCAG AAA × Fail

Any Text WCAG AAA × Fail

Black Background



This preview shows how the CIE LCh color 64, 10.429, 26.422 looks on a black background.

Color Contrast Check

Large Text (above 18pt) WCAG AA ✓ Pass

Any Text WCAG AA ✓ Pass

Large Text (above 18pt) WCAG AAA ✓ Pass

Any Text WCAG AAA ✓ Pass

If you want to check with other color combinations, try the [Color Contrast Checker](#).

CIELCh 64, 10.429, 26.422

Background



This preview shows how black text looks on a background with the CIELCh color 64, 10.429, 26.422.



This preview shows how white text looks on a background with the CIELCh color 64, 10.429, 26.422.

Color Blindness Simulation

Color vision deficiency is a very complex topic, and I could not describe the different causes any better than Wikipedia does, so if you want to learn more, you should check out their [article about color blindness](#).

Dichromacy



Original Color

64, 10.429, 26.422

Protanopia

64, 3.169, 80.407

Deuteranopia

64, 9.310, 30.465



Tritanopia
64, 13.411, 350.974

Trichromacy



Original Color
64, 10.429, 26.422

Protanomaly
64, 5.206, 44.927

Deuteranomaly
64, 9.711, 30.072

Tritanomaly
64, 11.623, 1.048

Monochromacy



Original Color
64, 10.429, 26.422

Achromatopsia
65, 0.008, 296.813

Achromatomaly
64, 3.925, 27.763

CSS Examples

Text

The CSS property to change the color of the text to CIELCh 64, 10.429, 26.422 is called "color". The color property can be set on classes, ids or directly on the HTML element.

This example shows how text in the color `rgb(175, 149, 147)` looks like.

```
.text, #text, p{  
    color:rgb(175, 149, 147)  
}
```

If you want to add a text shadow in that color use the text-shadow property, you can generate a text shadow directly with our [CSS Text Shadow Generator](#).

Here you see how black text with a 4 pixel rgb(175, 149, 147) colored shadow looks like.

```
.shadow{ text-shadow: 4px 4px 2px rgb(175, 149, 147) }
```

Border

The CSS property to change the border of an element to CIELCh 64, 10.429, 26.422 is called "border". The border property can be set on classes, ids or directly on the HTML element.

This example shows the color as border, it can be applied via the CSS property "border" or "border-color".

```
.border, #border, table{ border:4px solid rgb(175, 149, 147) }
```

If only the border color should be changed use the property `border-color`.

```
.border{ border-color:rgb(175, 149, 147) }
```

If you want to add a box shadow in that color use:

Here you see how a box with a 4 pixel `rgb(175, 149, 147)` colored shadow looks like.

```
.boxshadow{ -moz-box-shadow:4px 4px 4px  
4px rgb(175, 149, 147); -webkit-box-  
shadow:4px 4px 4px 4px rgb(175, 149, 147);  
box-shadow:4px 4px 4px 4px rgb(175, 149,  
147) }
```

Background

The CSS property to change the background color of an element to CIELCh 64, 10.429, 26.422 is called "background". The background property can be set on classes, ids or directly on the HTML element.

```
.background, #background, body{  
background: rgb(175, 149, 147) }
```

If only the background color should be changed can be used:

```
.background{ background-color: rgb(175,  
149, 147) }
```

This example shows the color as background, it is applied via the CSS property "background".

To optimize and compress your CSS code, you can use our [online CSS compressor and optimizer](#) based on csstidy. If you want to create a linear or radial gradient as background or border, check our [CSS Gradient Generator](#).

Hey! You found this booklet interesting? Support Converting Colors with the new Membership Option!

The pro membership hides all ads, plus gives you double the colors in the color bucket, and more awesome pro features!

[Learn more, Memberships starting at \\$2.50/m!](#)

**Follow me
on Twitter!**

@ConvertingColor