

Converting Colors

CIELCh(64, 12.326, 75.149)

Have a look what the booklet for
CIELCh(64, 12.326, 75.149) contains.

CIELCh(64, 12.205, 74.387)	3
<i>Conversions</i>	4
<i>Details</i>	6
<i>Harmonies</i>	11
<i>Previews</i>	20
<i>Color Blindness Simulation</i>	23
<i>CSS Examples</i>	26

Color

CIELCh(64, 12.205, 74.387)

Conversions

Conversions Part 1

Format	Color
Hex	A99886
RGB	169, 152, 134
RGB Percent	66%, 60%, 53%
CMY	0.3356, 0.4023, 0.4729
CMYK	0.00, 0.10, 0.21, 0.34
HSL	31°, 17%, 60%
HSV	31°, 21%, 66%
XYZ	32.0765, 32.8017, 27.3404
YIQ	155.0310, 15.9100, -1.9940

Conversions

Conversions Part 2

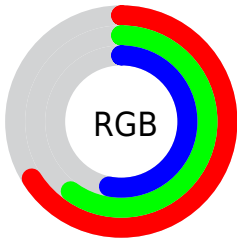
Format	Color
RYB	167, 169, 134
Decimal	11114630
CIELab	64.00, 3.28, 11.75
CIELCh	64, 12.205, 74.387
Yxy	32.8017, 0.3478, 0.3557
Android (android.graphics.Color)	4289304710 (0xFFA99886)
YUV	155.0310, -10.3683, 12.2508
Hunter-Lab	57.2727, -0.2556, 11.7876

Details

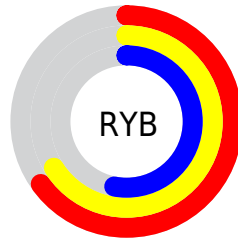
The CIELCh color **64, 12.205, 74.387** is a light color, and the websafe version is hex **999999**. A complement of this color would be **62, 11.623, 259.921**, and the grayscale version is **64, 0.008, 296.813**.

A 20% lighter version of the original color is **84, 12.357, 73.312**, and **44, 12.490, 73.657** is the 20% darker color. If you saturate the color by 10%, you get **61, 18.516, 73.146**, and if you desaturate by 10%, it is **67, 6.163, 75.612**.

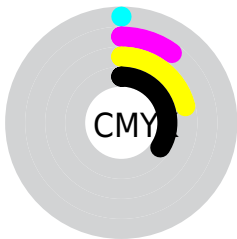
Distribution



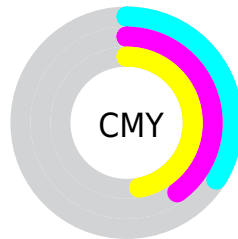
- Red (66%)
- Green (60%)
- Blue (53%)



- Red (65%)
- Yellow (66%)
- Blue (53%)



- Cyan (0%)
- Magenta (10%)
- Yellow (21%)
- Black (34%)



- Cyan (34%)
- Magenta (40%)
- Yellow (47%)

Brightness & Saturation Gradients

These gradients show how the CIELCh color 64, 12.205, 74.387 changes by changing the brightness by 10 percent. The first figure shows a shift by +10% for each color and the second figure -10%.

Similar to the brightness gradients but the following saturation gradients show a change of the CIELCh color 64, 12.205, 74.387 by changing the saturation by 10% instead.

■ 64, 12.205, 74.387

■ 64, 12.205, 74.387

■ 100, 12.205,
74.387

■ 54, 12.205, 74.387

■ 84, 12.205, 74.387

■ 44, 12.205, 74.387

■ 94, 12.205, 74.387

■ 34, 12.205, 74.387

■ 24, 12.205, 74.387

■ 14, 12.205, 74.387

■ 4, 12.205, 74.387

■ 0, 12.205, 74.387

■ 64, 12.205, 74.387

■ 64, 12.205, 74.387

■ 61, 18.516, 73.146

■ 67, 6.163, 75.612

59, 25.098, 71.876

69, 0.373, 76.033

57, 31.928, 70.587

72, 5.186, 258.122

54, 38.929, 69.263

75, 10.538,
259.237

52, 45.922, 67.858

77, 15.703,
260.331

50, 52.545, 66.262

48, 58.151, 64.254

80, 20.704,
261.387

46, 62.324, 62.047

83, 25.560,
262.398

85, 24.092,
252.590

87, 22.770,
239.785

Harmonies

Complementary

The Complementary color scheme is a pair of colors which are on the opposite of each other on the color wheel.



64, 12.205, 74.387



62, 11.623, 259.921

Rectangle

The Rectangle color scheme consists of four colors that form a rectangle on the color wheel.



64, 12.205, 74.387



64, 12.205, 124.387



64, 12.205, 254.387



64, 12.205, 304.387

Sweetspot

The Sweet Spot groups the original color and five complimentary colors.



64, 12.205, 74.397



86, 4.231, 76.131



60, 16.832, 345.429



45, 2.806, 76.065



94, 0.011, 296.813



46, 0.006, 296.813

Same Dimension

The Same Dimension uses a secret algorithm to generate beautiful new colors.



64, 12.205, 74.397



79, 18.405, 73.803



69, 19.076, 108.211



34, 3.241, 75.775



40, 56.294, 62.498



3, 5.559, 68.981

Inverse Universe

The Inverse Universe completely reimagines the original color for something new.



62, 11.623, 259.921



76, 17.304, 260.751



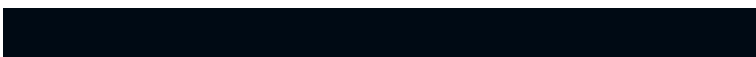
57, 19.996, 292.482



34, 3.180, 258.213



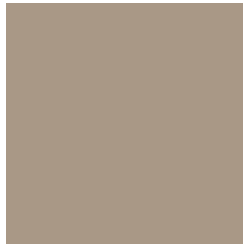
31, 48.643, 284.602



2, 6.172, 263.753

Previews

White Background



This preview shows how the CIELCh color 64, 12.205, 74.387 looks on a white background.

Color Contrast Check

Large Text (above 18pt) WCAG AA × Fail

Any Text WCAG AA × Fail

Large Text (above 18pt) WCAG AAA × Fail

Any Text WCAG AAA × Fail

Black Background



This preview shows how the CIELCh color 64, 12.205, 74.387 looks on a black background.

Color Contrast Check

Large Text (above 18pt) WCAG AA ✓ Pass

Any Text WCAG AA ✓ Pass

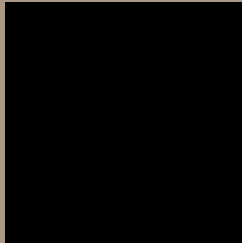
Large Text (above 18pt) WCAG AAA ✓ Pass

Any Text WCAG AAA ✓ Pass

If you want to check with other color combinations, try the [Color Contrast Checker](#).

CIELCh 64, 12.205, 74.387

Background



This preview shows how black text looks on a background with the CIELCh color 64, 12.205, 74.387.



This preview shows how white text looks on a background with the CIELCh color 64, 12.205, 74.387.

Color Blindness Simulation

Color vision deficiency is a very complex topic, and I could not describe the different causes any better than Wikipedia does, so if you want to learn more, you should check out their [article about color blindness](#).

Dichromacy



Original Color

64, 12.205, 74.387

Protanopia

64, 10.906, 94.003

Deuteranopia

64, 13.957, 53.889



Tritanopia
64, 11.114, 347.139

Trichromacy



Original Color
64, 12.205, 74.387

Protanomaly
64, 11.454, 86.072

Deuteranomaly
64, 12.948, 59.879

Tritanomaly
64, 8.682, 16.538

Monochromacy



Original Color
64, 12.205, 74.387

Achromatopsia
64, 0.008, 296.813

Achromatomaly
64, 4.064, 74.452

CSS Examples

Text

The CSS property to change the color of the text to CIELCh 64, 12.205, 74.387 is called "color". The color property can be set on classes, ids or directly on the HTML element.

This example shows how text in the color `rgb(169, 152, 134)` looks like.

```
.text, #text, p{  
    color:rgb(169, 152, 134)  
}
```

If you want to add a text shadow in that color use the text-shadow property, you can generate a text shadow directly with our [CSS Text Shadow Generator](#).

Here you see how black text with a 4 pixel rgb(169, 152, 134) colored shadow looks like.

```
.shadow{ text-shadow: 4px 4px 2px rgb(169, 152, 134) }
```

Border

The CSS property to change the border of an element to CIELCh 64, 12.205, 74.387 is called "border". The border property can be set on classes, ids or directly on the HTML element.

This example shows the color as border, it can be applied via the CSS property "border" or "border-color".

```
.border, #border, table{ border:4px solid rgb(169, 152, 134) }
```

If only the border color should be changed use the property `border-color`.

```
.border{ border-color:rgb(169, 152, 134) }
```

If you want to add a box shadow in that color use:

Here you see how a box with a 4 pixel `rgb(169, 152, 134)` colored shadow looks like.

```
.boxshadow{ -moz-box-shadow:4px 4px 4px  
4px rgb(169, 152, 134); -webkit-box-  
shadow:4px 4px 4px 4px rgb(169, 152, 134);  
box-shadow:4px 4px 4px 4px rgb(169, 152,  
134) }
```

Background

The CSS property to change the background color of an element to CIELCh 64, 12.205, 74.387 is called "background". The background property can be set on classes, ids or directly on the HTML element.

```
.background, #background, body{  
background: rgb(169, 152, 134) }
```

If only the background color should be changed can be used:

```
.background{ background-color: rgb(169,  
152, 134) }
```

This example shows the color as background, it is applied via the CSS property "background".

To optimize and compress your CSS code, you can use our [online CSS compressor and optimizer](#) based on csstidy. If you want to create a linear or radial gradient as background or border, check our [CSS Gradient Generator](#).

Hey! You found this booklet interesting? Support Converting Colors with the new Membership Option!

The pro membership hides all ads, plus gives you double the colors in the color bucket, and more awesome pro features!

[Learn more, Memberships starting at \\$2.50/m!](#)

**Follow me
on Twitter!**

@ConvertingColor