

Converting Colors

CIELCh(64, 13.644, 6.170)

Have a look what the booklet for
CIELCh(64, 13.644, 6.170) contains.

CIELCh(64, 13.417, 6.417)	3
<i>Conversions</i>	4
<i>Details</i>	6
<i>Harmonies</i>	11
<i>Previews</i>	20
<i>Color Blindness Simulation</i>	23
<i>CSS Examples</i>	26

Color

CIELCh(64, 13.417, 6.417)

Conversions

Conversions Part 1

Format	Color
Hex	B49399
RGB	180, 147, 153
RGB Percent	71%, 58%, 60%
CMY	0.2947, 0.4241, 0.4006
CMYK	0.00, 0.18, 0.15, 0.29
HSL	349°, 18%, 64%
HSV	349°, 18%, 71%
XYZ	34.9351, 32.8017, 34.5632
YIQ	157.5510, 17.7420, 8.8620

Conversions

Conversions Part 2

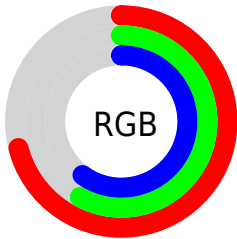
Format	Color
RYB	180, 147, 153
Decimal	11834265
CIELab	64.00, 13.33, 1.50
CIElCh	64, 13.417, 6.417
Yxy	32.8017, 0.3415, 0.3206
Android (android.graphics.Color)	4290024345 (0xFFB49399)
YUV	157.5510, -2.2436, 19.6878
Hunter-Lab	57.2727, 8.6536, 4.3103

Details

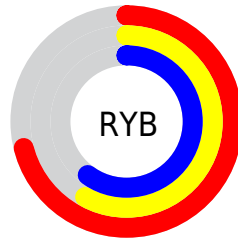
The CIELCh color **64, 13.417, 6.417** is a light color, and the websafe version is hex **CC9999**. A complement of this color would be **71, 12.423, 183.075**, and the grayscale version is **65, 0.008, 296.813**.

A 20% lighter version of the original color is **84, 13.374, 6.844**, and **44, 13.655, 6.180** is the 20% darker color. If you saturate the color by 10%, you get **59, 21.243, 7.690**, and if you desaturate by 10%, it is **69, 5.941, 5.329**.

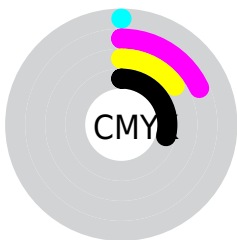
Distribution



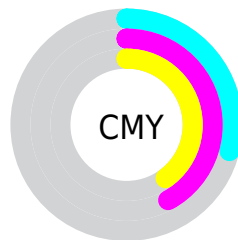
- Red (71%)
- Green (58%)
- Blue (60%)



- Red (71%)
- Yellow (58%)
- Blue (60%)



- Cyan (0%)
- Magenta (18%)
- Yellow (15%)
- Black (29%)



- Cyan (29%)
- Magenta (42%)
- Yellow (40%)

Brightness & Saturation Gradients

These gradients show how the CIELCh color 64, 13.417, 6.417 changes by changing the brightness by 10 percent. The first figure shows a shift by +10% for each color and the second figure -10%.

Similar to the brightness gradients but the following saturation gradients show a change of the CIELCh color 64, 13.417, 6.417 by changing the saturation by 10% instead.

64, 13.417, 6.417

64, 13.417, 6.417

100, 13.417, 6.417

54, 13.417, 6.417

84, 13.417, 6.417

44, 13.417, 6.417

94, 13.417, 6.417

34, 13.417, 6.417

24, 13.417, 6.417

14, 13.417, 6.417

4, 13.417, 6.417

0, 13.417, 6.417

64, 13.417, 6.417

64, 13.417, 6.417

59, 21.243, 7.690

69, 5.941, 5.329

55, 29.337, 9.224

74, 1.143, 184.933

50, 37.535, 11.120

79, 7.834, 183.806

46, 45.599, 13.502

84, 14.148,
183.104

43, 53.228, 16.512

90, 20.114,
182.496

40, 60.137, 20.286

39, 66.161, 24.859

95, 25.763,
181.956

38, 71.417, 29.907

95, 24.031,
197.936

37, 72.296, 30.677

Harmonies

Complementary

The Complementary color scheme is a pair of colors which are on the opposite of each other on the color wheel.



64, 13.417, 6.417



71, 12.423, 183.075

Rectangle

The Rectangle color scheme consists of four colors that form a rectangle on the color wheel.



64, 13.417, 6.417



64, 13.417, 56.417



64, 13.417, 186.417



64, 13.417, 236.417

Sweetspot

The Sweet Spot groups the original color and five complimentary colors.



64, 13.415, 6.423



89, 5.271, 5.087



64, 20.965, 320.114



47, 3.499, 5.157



96, 0.011, 296.813



49, 0.007, 296.813

Same Dimension

The Same Dimension uses a secret algorithm to generate beautiful new colors.



64, 13.415, 6.423



79, 20.175, 6.908



67, 10.738, 52.315



35, 4.019, 5.432



31, 63.736, 29.932



2, 9.369, 7.899

Inverse Universe

The Inverse Universe completely reimagines the original color for something new.



64, 13.415, 6.423



79, 20.175, 6.908



68, 9.721, 235.330



35, 4.019, 5.432



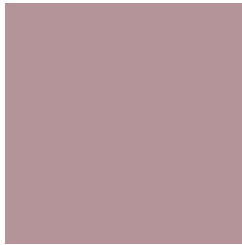
31, 63.736, 29.932



2, 9.369, 7.899

Previews

White Background



This preview shows how the CIELCh color 64, 13.417, 6.417 looks on a white background.

Color Contrast Check

Large Text (above 18pt) WCAG AA × Fail

Any Text WCAG AA × Fail

Large Text (above 18pt) WCAG AAA × Fail

Any Text WCAG AAA × Fail

Black Background



This preview shows how the CIELCh color 64, 13.417, 6.417 looks on a black background.

Color Contrast Check

Large Text (above 18pt) WCAG AA ✓ Pass

Any Text WCAG AA ✓ Pass

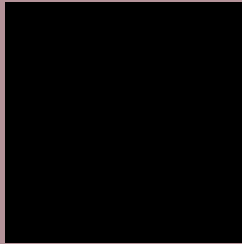
Large Text (above 18pt) WCAG AAA ✓ Pass

Any Text WCAG AAA ✓ Pass

If you want to check with other color combinations, try the [Color Contrast Checker](#).

CIELCh 64, 13.417, 6.417

Background



This preview shows how black text looks on a background with the CIELCh color 64, 13.417, 6.417.



This preview shows how white text looks on a background with the CIELCh color 64, 13.417, 6.417.

Color Blindness Simulation

Color vision deficiency is a very complex topic, and I could not describe the different causes any better than Wikipedia does, so if you want to learn more, you should check out their [article about color blindness](#).

Dichromacy



Original Color

64, 13.417, 6.417

Protanopia

64, 2.045, 324.439

Deuteranopia

64, 8.319, 12.509



Tritanopia
64, 14.597, 356.201

Trichromacy



Original Color
64, 13.417, 6.417

Protanomaly
64, 5.879, 357.676

Deuteranomaly
64, 9.977, 10.763

Tritanomaly
64, 14.226, 0.330

Monochromacy



Original Color
64, 13.417, 6.417

Achromatopsia
65, 0.008, 296.813

Achromatomaly
64, 4.790, 6.374

CSS Examples

Text

The CSS property to change the color of the text to CIELCh 64, 13.417, 6.417 is called "color". The color property can be set on classes, ids or directly on the HTML element.

This example shows how text in the color `rgb(180, 147, 153)` looks like.

```
.text, #text, p{  
    color:rgb(180, 147, 153)  
}
```

If you want to add a text shadow in that color use the text-shadow property, you can generate a text shadow directly with our [CSS Text Shadow Generator](#).

Here you see how black text with a 4 pixel rgb(180, 147, 153) colored shadow looks like.

```
.shadow{ text-shadow: 4px 4px 2px rgb(180, 147, 153) }
```

Border

The CSS property to change the border of an element to CIELCh 64, 13.417, 6.417 is called "border". The border property can be set on classes, ids or directly on the HTML element.

This example shows the color as border, it can be applied via the CSS property "border" or "border-color".

```
.border, #border, table{ border:4px solid rgb(180, 147, 153) }
```

If only the border color should be changed use the property `border-color`.

```
.border{ border-color:rgb(180, 147, 153) }
```

If you want to add a box shadow in that color use:

Here you see how a box with a 4 pixel `rgb(180, 147, 153)` colored shadow looks like.

```
.boxshadow{ -moz-box-shadow:4px 4px 4px  
4px rgb(180, 147, 153); -webkit-box-  
shadow:4px 4px 4px 4px rgb(180, 147, 153);  
box-shadow:4px 4px 4px 4px rgb(180, 147,  
153) }
```

Background

The CSS property to change the background color of an element to CIELCh 64, 13.417, 6.417 is called "background". The background property can be set on classes, ids or directly on the HTML element.

```
.background, #background, body{  
background: rgb(180, 147, 153) }
```

If only the background color should be changed can be used:

```
.background{ background-color: rgb(180,  
147, 153) }
```

This example shows the color as background, it is applied via the CSS property "background".

To optimize and compress your CSS code, you can use our [online CSS compressor and optimizer](#) based on csstidy. If you want to create a linear or radial gradient as background or border, check our [CSS Gradient Generator](#).

Hey! You found this booklet interesting? Support Converting Colors with the new Membership Option!

The pro membership hides all ads, plus gives you double the colors in the color bucket, and more awesome pro features!

[Learn more, Memberships starting at \\$2.50/m!](#)

**Follow me
on Twitter!**

@ConvertingColor