

Converting Colors

CIELCh(64, 14.827, 35.761)

Have a look what the booklet for
CIELCh(64, 14.827, 35.761) contains.

CIELCh(64, 14.828, 35.753)	3
<i>Conversions</i>	4
<i>Details</i>	6
<i>Harmonies</i>	11
<i>Previews</i>	20
<i>Color Blindness Simulation</i>	23
<i>CSS Examples</i>	26

Color

CIELCh(64, 14.828, 35.753)

Conversions

Conversions Part 1

Format	Color
Hex	B6938C
RGB	182, 147, 140
RGB Percent	71%, 58%, 55%
CMY	0.2854, 0.4227, 0.4502
CMYK	0.00, 0.19, 0.23, 0.29
HSL	10°, 22%, 63%
HSV	10°, 23%, 71%
XYZ	34.5562, 32.8017, 29.3991
YIQ	156.6670, 23.1070, 5.2430

Conversions

Conversions Part 2

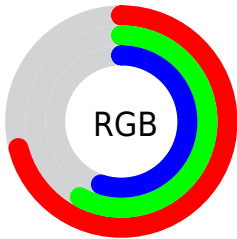
Format	Color
RYB	182, 148, 140
Decimal	11965324
CIELab	64.00, 12.03, 8.66
CIELCh	64, 14.828, 35.753
Yxy	32.8017, 0.3571, 0.3390
Android (android.graphics.Color)	4290155404 (0xFFB6938C)
YUV	156.6670, -8.2168, 22.2170
Hunter-Lab	57.2727, 7.4729, 9.6563

Details

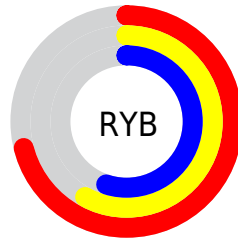
The CIELCh color $64, 14.828, 35.753$ is a light color, and the websafe version is hex `CC9999`. A complement of this color would be $69, 12.690, 216.226$, and the grayscale version is $65, 0.008, 296.813$.

A 20% lighter version of the original color is $84, 14.589, 34.904$, and $44, 14.743, 35.053$ is the 20% darker color. If you saturate the color by 10%, you get $60, 22.159, 36.049$, and if you desaturate by 10%, it is $68, 8.056, 35.613$.

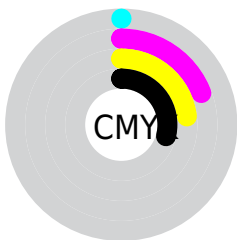
Distribution



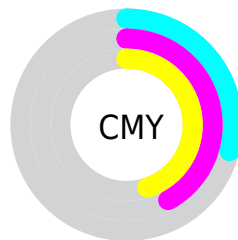
- Red (71%)
- Green (58%)
- Blue (55%)



- Red (71%)
- Yellow (58%)
- Blue (55%)



- Cyan (0%)
- Magenta (19%)
- Yellow (23%)
- Black (29%)



- Cyan (29%)
- Magenta (42%)
- Yellow (45%)

Brightness & Saturation Gradients

These gradients show how the CIELCh color 64, 14.828, 35.753 changes by changing the brightness by 10 percent. The first figure shows a shift by +10% for each color and the second figure -10%.

Similar to the brightness gradients but the following saturation gradients show a change of the CIELCh color 64, 14.828, 35.753 by changing the saturation by 10% instead.

64, 14.828, 35.753

64, 14.828, 35.753

100, 14.828,
35.753

54, 14.828, 35.753

84, 14.828, 35.753

44, 14.828, 35.753

94, 14.828, 35.753

34, 14.828, 35.753

24, 14.828, 35.753

14, 14.828, 35.753

4, 14.828, 35.753

0, 14.828, 35.753

64, 14.828, 35.753

64, 14.828, 35.753

60, 22.159, 36.049

68, 8.056, 35.613

56, 30.065, 36.532

73, 1.810, 35.395

52, 38.521, 37.256

77, 3.957, 215.900

48, 47.439, 38.255

82, 9.295, 215.985

45, 56.618, 39.514

86, 14.252,
216.173

43, 65.626, 40.889

91, 18.875,
216.406

41, 73.509, 41.932

95, 22.857,
199.969

39, 78.093, 42.586

95, 23.358,
197.977

Harmonies

Complementary

The Complementary color scheme is a pair of colors which are on the opposite of each other on the color wheel.



64, 14.828, 35.753



69, 12.690, 216.226

Rectangle

The Rectangle color scheme consists of four colors that form a rectangle on the color wheel.



64, 14.828, 35.753



64, 14.828, 85.753



64, 14.828, 215.753



64, 14.828, 265.753

Sweetspot

The Sweet Spot groups the original color and five complimentary colors.



64, 14.827, 35.761



90, 5.222, 35.546



63, 25.041, 330.787



48, 3.429, 35.555



97, 0.011, 296.813



50, 0.007, 296.813

Same Dimension

The Same Dimension uses a secret algorithm to generate beautiful new colors.



64, 14.827, 35.761



79, 22.814, 35.896



69, 16.321, 88.216



36, 3.464, 35.575



33, 69.060, 42.711



3, 9.505, 30.848

Inverse Universe

The Inverse Universe completely reimagines the original color for something new.



69, 12.690, 216.226



87, 18.733, 216.451



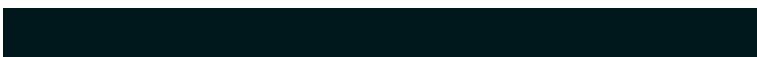
63, 16.238, 274.454



38, 3.266, 215.906



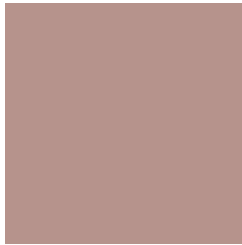
50, 30.098, 227.822



6, 8.646, 223.746

Previews

White Background



This preview shows how the CIELCh color 64, 14.828, 35.753 looks on a white background.

Color Contrast Check

Large Text (above 18pt) WCAG AA × Fail

Any Text WCAG AA × Fail

Large Text (above 18pt) WCAG AAA × Fail

Any Text WCAG AAA × Fail

Black Background



This preview shows how the CIE LCh color 64, 14.828, 35.753 looks on a black background.

Color Contrast Check

Large Text (above 18pt) WCAG AA ✓ Pass

Any Text WCAG AA ✓ Pass

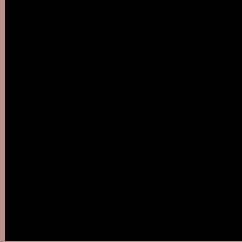
Large Text (above 18pt) WCAG AAA ✓ Pass

Any Text WCAG AAA ✓ Pass

If you want to check with other color combinations, try the [Color Contrast Checker](#).

CIELCh 64, 14.828, 35.753

Background



This preview shows how black text looks on a background with the CIELCh color 64, 14.828, 35.753.



This preview shows how white text looks on a background with the CIELCh color 64, 14.828, 35.753.

Color Blindness Simulation

Color vision deficiency is a very complex topic, and I could not describe the different causes any better than Wikipedia does, so if you want to learn more, you should check out their [article about color blindness](#).

Dichromacy



Original Color


64, 14.828, 35.753

Protanopia

64, 6.539, 88.197

Deuteranopia

64, 11.961, 47.729



Tritanopia
64, 16.440, 359.369

Trichromacy



Original Color
64, 14.828, 35.753

Protanomaly
64, 8.452, 55.987

Deuteranomaly
64, 12.844, 43.129

Tritanomaly
64, 14.872, 12.340

Monochromacy



Original Color
64, 14.828, 35.753

Achromatopsia
65, 0.008, 296.813

Achromatomaly
64, 5.206, 32.067

CSS Examples

Text

The CSS property to change the color of the text to CIELCh 64, 14.828, 35.753 is called "color". The color property can be set on classes, ids or directly on the HTML element.

This example shows how text in the color `rgb(182, 147, 140)` looks like.

```
.text, #text, p{  
    color:rgb(182, 147, 140)  
}
```

If you want to add a text shadow in that color use the text-shadow property, you can generate a text shadow directly with our [CSS Text Shadow Generator](#).

Here you see how black text with a 4 pixel rgb(182, 147, 140) colored shadow looks like.

```
.shadow{ text-shadow: 4px 4px 2px rgb(182, 147, 140) }
```

Border

The CSS property to change the border of an element to CIELCh 64, 14.828, 35.753 is called "border". The border property can be set on classes, ids or directly on the HTML element.

This example shows the color as border, it can be applied via the CSS property "border" or "border-color".

```
.border, #border, table{ border:4px solid rgb(182, 147, 140) }
```

If only the border color should be changed use the property `border-color`.

```
.border{ border-color:rgb(182, 147, 140) }
```

If you want to add a box shadow in that color use:

Here you see how a box with a 4 pixel `rgb(182, 147, 140)` colored shadow looks like.

```
.boxshadow{ -moz-box-shadow:4px 4px 4px  
4px rgb(182, 147, 140); -webkit-box-  
shadow:4px 4px 4px 4px rgb(182, 147, 140);  
box-shadow:4px 4px 4px 4px rgb(182, 147,  
140) }
```

Background

The CSS property to change the background color of an element to CIELCh 64, 14.828, 35.753 is called "background". The background property can be set on classes, ids or directly on the HTML element.

```
.background, #background, body{  
background: rgb(182, 147, 140) }
```

If only the background color should be changed can be used:

```
.background{ background-color: rgb(182,  
147, 140) }
```

This example shows the color as background, it is applied via the CSS property "background".

To optimize and compress your CSS code, you can use our [online CSS compressor and optimizer](#) based on csstidy. If you want to create a linear or radial gradient as background or border, check our [CSS Gradient Generator](#).

Hey! You found this booklet interesting? Support Converting Colors with the new Membership Option!

The pro membership hides all ads, plus gives you double the colors in the color bucket, and more awesome pro features!

[Learn more, Memberships starting at \\$2.50/m!](#)

**Follow me
on Twitter!**

@ConvertingColor