

Converting Colors

CIELCh(64, 15.633, 29.534)

Have a look what the booklet for
CIELCh(64, 15.633, 29.534) contains.

CIELCh(64, 15.615, 28.950)	3
<i>Conversions</i>	4
<i>Details</i>	6
<i>Harmonies</i>	11
<i>Previews</i>	20
<i>Color Blindness Simulation</i>	23
<i>CSS Examples</i>	26

Color

CIELCh(64, 15.615, 28.950)

Conversions

Conversions Part 1

Format	Color
Hex	B8928E
RGB	184, 146, 142
RGB Percent	72%, 57%, 56%
CMY	0.2775, 0.4266, 0.4423
CMYK	0.00, 0.21, 0.23, 0.28
HSL	6°, 23%, 64%
HSV	6°, 23%, 72%
XYZ	35.0320, 32.8017, 30.1599
YIQ	156.9060, 23.9320, 6.8120

Conversions

Conversions Part 2

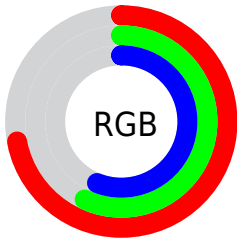
Format	Color
RYB	184, 146, 142
Decimal	12096142
CIELab	64.00, 13.66, 7.56
CIELCh	64, 15.615, 28.950
Yxy	32.8017, 0.3575, 0.3347
Android (android.graphics.Color)	4290286222 (0xFFB8928E)
YUV	156.9060, -7.3487, 23.7614
Hunter-Lab	57.2727, 8.9556, 8.8688

Details

The CIELCh color **64, 15.615, 28.950** is a light color, and the websafe version is hex **CC9999**. A complement of this color would be **71, 13.367, 207.873**, and the grayscale version is **65, 0.008, 296.813**.

A 20% lighter version of the original color is **84, 15.741, 28.163**, and **44, 15.615, 27.904** is the 20% darker color. If you saturate the color by 10%, you get **59, 23.390, 29.636**, and if you desaturate by 10%, it is **69, 8.415, 28.461**.

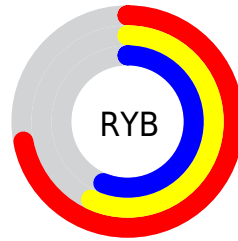
Distribution



Red (72%)

Green (57%)

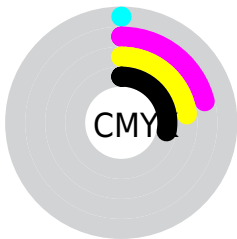
Blue (56%)



Red (72%)

Yellow (57%)

Blue (56%)

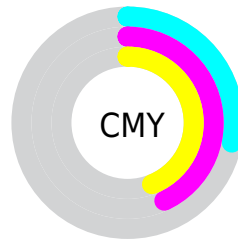


Cyan (0%)

Magenta (21%)

Yellow (23%)

Black (28%)



Cyan (28%)

Magenta (43%)

Yellow (44%)

Brightness & Saturation Gradients

These gradients show how the CIELCh color 64, 15.615, 28.950 changes by changing the brightness by 10 percent. The first figure shows a shift by +10% for each color and the second figure -10%.

Similar to the brightness gradients but the following saturation gradients show a change of the CIELCh color 64, 15.615, 28.950 by changing the saturation by 10% instead.

64, 15.615, 28.950

64, 15.615, 28.950

100, 15.615,
28.950

54, 15.615, 28.950

84, 15.615, 28.950

44, 15.615, 28.950

94, 15.615, 28.950

34, 15.615, 28.950

24, 15.615, 28.950

14, 15.615, 28.950

4, 15.615, 28.950

0, 15.615, 28.950

64, 15.615, 28.950

64, 15.615, 28.950

59, 23.390, 29.636

69, 8.415, 28.461

55, 31.737, 30.569

74, 1.770, 27.913

51, 40.595, 31.823

78, 4.363, 208.128

47, 49.833, 33.459

83, 10.034,
207.946

44, 59.209, 35.485

88, 15.294,
207.878

42, 68.267, 37.762

40, 76.033, 39.783

93, 20.191,
207.868

39, 80.483, 41.107

96, 22.781,
198.013

Harmonies

Complementary

The Complementary color scheme is a pair of colors which are on the opposite of each other on the color wheel.



64, 15.615, 28.950



71, 13.367, 207.873

Rectangle

The Rectangle color scheme consists of four colors that form a rectangle on the color wheel.



64, 15.615, 28.950



64, 15.615, 78.950



64, 15.615, 208.950



64, 15.615, 258.950

Sweetspot

The Sweet Spot groups the original color and five complimentary colors.



64, 15.614, 28.958



90, 5.566, 28.214



64, 26.471, 328.062



48, 3.623, 28.241



97, 0.011, 296.813



50, 0.007, 296.813

Same Dimension

The Same Dimension uses a secret algorithm to generate beautiful new colors.



64, 15.614, 28.958



79, 23.332, 29.246



69, 15.185, 80.940



36, 3.660, 28.313



33, 70.534, 41.034



3, 9.941, 25.631

Inverse Universe

The Inverse Universe completely reimagines the original color for something new.



71, 13.367, 207.873



89, 19.277, 207.867



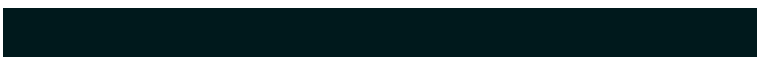
65, 14.731, 267.259



38, 3.448, 208.051



53, 30.998, 213.011



7, 9.175, 211.875

Previews

White Background



This preview shows how the CIELCh color 64, 15.615, 28.950 looks on a white background.

Color Contrast Check

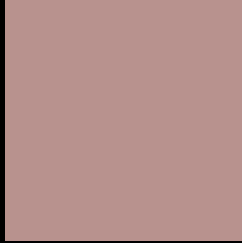
Large Text (above 18pt) WCAG AA × Fail

Any Text WCAG AA × Fail

Large Text (above 18pt) WCAG AAA × Fail

Any Text WCAG AAA × Fail

Black Background



This preview shows how the CIELCh color 64, 15.615, 28.950 looks on a black background.

Color Contrast Check

Large Text (above 18pt) WCAG AA ✓ Pass

Any Text WCAG AA ✓ Pass

Large Text (above 18pt) WCAG AAA ✓ Pass

Any Text WCAG AAA ✓ Pass

If you want to check with other color combinations, try the [Color Contrast Checker](#).

CIELCh 64, 15.615, 28.950

Background



This preview shows how black text looks on a background with the CIELCh color 64, 15.615, 28.950.



This preview shows how white text looks on a background with the CIELCh color 64, 15.615, 28.950.

Color Blindness Simulation

Color vision deficiency is a very complex topic, and I could not describe the different causes any better than Wikipedia does, so if you want to learn more, you should check out their [article about color blindness](#).

Dichromacy



Original Color

64, 15.615, 28.950

Protanopia

64, 4.842, 85.754

Deuteranopia

64, 11.049, 43.801



Tritanopia
64, 17.578, 0.986

Trichromacy



Original Color
64, 15.615, 28.950

Protanomaly
64, 7.813, 49.629

Deuteranomaly
64, 12.388, 38.577

Tritanomaly
64, 16.147, 11.188

Monochromacy



Original Color
64, 15.615, 28.950

Achromatopsia
65, 0.008, 296.813

Achromatomaly
64, 5.501, 25.606

CSS Examples

Text

The CSS property to change the color of the text to CIELCh 64, 15.615, 28.950 is called "color". The color property can be set on classes, ids or directly on the HTML element.

This example shows how text in the color `rgb(184, 146, 142)` looks like.

```
.text, #text, p{  
    color:rgb(184, 146, 142)  
}
```

If you want to add a text shadow in that color use the text-shadow property, you can generate a text shadow directly with our [CSS Text Shadow Generator](#).

Here you see how black text with a 4 pixel rgb(184, 146, 142) colored shadow looks like.

```
.shadow{ text-shadow: 4px 4px 2px rgb(184, 146, 142) }
```

Border

The CSS property to change the border of an element to CIELCh 64, 15.615, 28.950 is called "border". The border property can be set on classes, ids or directly on the HTML element.

This example shows the color as border, it can be applied via the CSS property "border" or "border-color".

```
.border, #border, table{ border:4px solid rgb(184, 146, 142) }
```

If only the border color should be changed use the property `border-color`.

```
.border{ border-color:rgb(184, 146, 142) }
```

If you want to add a box shadow in that color use:

Here you see how a box with a 4 pixel `rgb(184, 146, 142)` colored shadow looks like.

```
.boxshadow{ -moz-box-shadow:4px 4px 4px  
4px rgb(184, 146, 142); -webkit-box-  
shadow:4px 4px 4px 4px rgb(184, 146, 142);  
box-shadow:4px 4px 4px 4px rgb(184, 146,  
142) }
```

Background

The CSS property to change the background color of an element to CIELCh 64, 15.615, 28.950 is called "background". The background property can be set on classes, ids or directly on the HTML element.

```
.background, #background, body{  
background: rgb(184, 146, 142) }
```

If only the background color should be changed can be used:

```
.background{ background-color: rgb(184,  
146, 142) }
```

This example shows the color as background, it is applied via the CSS property "background".

To optimize and compress your CSS code, you can use our [online CSS compressor and optimizer](#) based on csstidy. If you want to create a linear or radial gradient as background or border, check our [CSS Gradient Generator](#).

Hey! You found this booklet interesting? Support Converting Colors with the new Membership Option!

The pro membership hides all ads, plus gives you double the colors in the color bucket, and more awesome pro features!

[Learn more, Memberships starting at \\$2.50/m!](#)

**Follow me
on Twitter!**

@ConvertingColor