

Converting Colors

CIELCh(64, 16.733, 27.942)

Have a look what the booklet for
CIELCh(64, 16.733, 27.942) contains.

CIELCh(64, 16.769, 26.636)	3
<i>Conversions</i>	4
<i>Details</i>	6
<i>Harmonies</i>	11
<i>Previews</i>	20
<i>Color Blindness Simulation</i>	23
<i>CSS Examples</i>	26

Color

CIELCh(64, 16.769, 26.636)

Conversions

Conversions Part 1

Format	Color
Hex	BA918E
RGB	186, 145, 142
RGB Percent	73%, 57%, 56%
CMY	0.2692, 0.4300, 0.4418
CMYK	0.00, 0.22, 0.24, 0.27
HSL	4°, 24%, 64%
HSV	4°, 24%, 73%
XYZ	35.4220, 32.8017, 30.1880
YIQ	156.9170, 25.3990, 7.7590

Conversions

Conversions Part 2

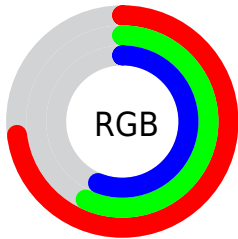
Format	Color
RYB	186, 145, 142
Decimal	12226958
CIELab	64.00, 14.99, 7.52
CIELCh	64, 16.769, 26.636
Yxy	32.8017, 0.3599, 0.3333
Android (android.graphics.Color)	4290417038 (0xFFBA918E)
YUV	156.9170, -7.3541, 25.5058
Hunter-Lab	57.2727, 10.1713, 8.8397

Details

The CIELCh color $64, 16.769, 26.636$ is a light color, and the websafe version is hex `CC9999`. A complement of this color would be $72, 14.278, 204.950$, and the grayscale version is $65, 0.008, 296.813$.

A 20% lighter version of the original color is $84, 16.829, 25.985$, and $44, 16.884, 25.619$ is the 20% darker color. If you saturate the color by 10%, you get $59, 24.834, 27.482$, and if you desaturate by 10%, it is $69, 9.285, 26.011$.

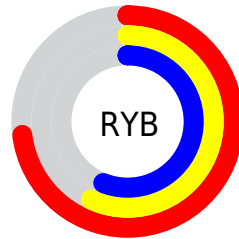
Distribution



Red (73%)

Green (57%)

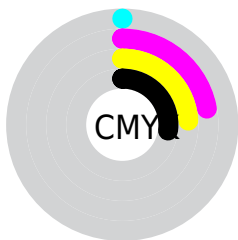
Blue (56%)



Red (73%)

Yellow (57%)

Blue (56%)

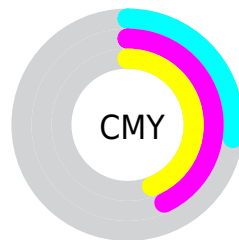


Cyan (0%)

Magenta (22%)

Yellow (24%)

Black (27%)



Cyan (27%)

Magenta (43%)

Yellow (44%)

Brightness & Saturation Gradients

These gradients show how the CIELCh color 64, 16.769, 26.636 changes by changing the brightness by 10 percent. The first figure shows a shift by +10% for each color and the second figure -10%.

Similar to the brightness gradients but the following saturation gradients show a change of the CIELCh color 64, 16.769, 26.636 by changing the saturation by 10% instead.

■ 64, 16.769, 26.636

■ 64, 16.769, 26.636

■ 100, 16.769,
26.636

■ 54, 16.769, 26.636

■ 84, 16.769, 26.636

■ 44, 16.769, 26.636

■ 94, 16.769, 26.636

■ 34, 16.769, 26.636

■ 24, 16.769, 26.636

■ 14, 16.769, 26.636

■ 4, 16.769, 26.636

■ 0, 16.769, 26.636

■ 64, 16.769, 26.636

■ 64, 16.769, 26.636

■ 59, 24.834, 27.482

■ 69, 9.285, 26.011

■ 55, 33.460, 28.606

■ 74, 2.371, 25.407

■ 51, 42.562, 30.092

■ 79, 4.012, 205.450

■ 47, 51.978, 32.010

■ 84, 9.913, 205.157

■ 44, 61.428, 34.370

■ 89, 15.385,
204.994

■ 41, 70.419, 37.006

■ 94, 20.478,
204.896

■ 40, 77.894, 39.329

■ 39, 81.664, 40.723

■ 96, 22.165,
198.052

Harmonies

Complementary

The Complementary color scheme is a pair of colors which are on the opposite of each other on the color wheel.



64, 16.769, 26.636



72, 14.278, 204.950

Rectangle

The Rectangle color scheme consists of four colors that form a rectangle on the color wheel.



64, 16.769, 26.636



64, 16.769, 76.636



64, 16.769, 206.636



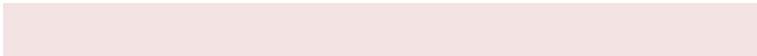
64, 16.769, 256.636

Sweetspot

The Sweet Spot groups the original color and five complimentary colors.



64, 16.767, 26.643



91, 5.751, 25.655



64, 27.995, 327.607



49, 3.776, 25.689



98, 0.011, 296.813



51, 0.007, 296.813

Same Dimension

The Same Dimension uses a secret algorithm to generate beautiful new colors.



64, 16.767, 26.643



79, 25.077, 27.018



70, 15.705, 79.244



37, 3.835, 25.779



33, 71.877, 40.623



3, 11.691, 23.537

Inverse Universe

The Inverse Universe completely reimagines the original color for something new.



72, 14.278, 204.950



90, 20.577, 204.880



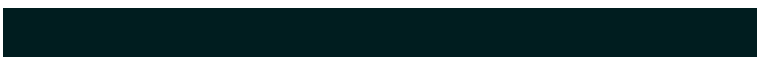
66, 15.127, 265.815



39, 3.613, 205.309



56, 32.166, 207.879



9, 10.643, 205.979

Previews

White Background



This preview shows how the CIELCh color 64, 16.769, 26.636 looks on a white background.

Color Contrast Check

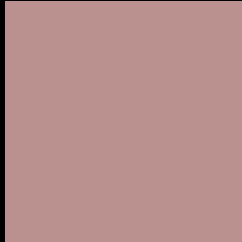
Large Text (above 18pt) WCAG AA × Fail

Any Text WCAG AA × Fail

Large Text (above 18pt) WCAG AAA × Fail

Any Text WCAG AAA × Fail

Black Background



This preview shows how the CIELCh color 64, 16.769, 26.636 looks on a black background.

Color Contrast Check

Large Text (above 18pt) WCAG AA ✓ Pass

Any Text WCAG AA ✓ Pass

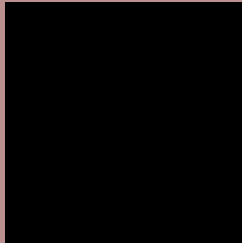
Large Text (above 18pt) WCAG AAA ✓ Pass

Any Text WCAG AAA ✓ Pass

If you want to check with other color combinations, try the [Color Contrast Checker](#).

CIELCh 64, 16.769, 26.636

Background



This preview shows how black text looks on a background with the CIELCh color 64, 16.769, 26.636.



This preview shows how white text looks on a background with the CIELCh color 64, 16.769, 26.636.

Color Blindness Simulation

Color vision deficiency is a very complex topic, and I could not describe the different causes any better than Wikipedia does, so if you want to learn more, you should check out their [article about color blindness](#).

Dichromacy



Original Color


64, 16.769, 26.636

Protanopia

64, 4.842, 85.754

Deuteranopia

64, 11.311, 46.287



Tritanopia
64, 18.878, 0.815

Trichromacy



Original Color
64, 16.769, 26.636

Protanomaly
64, 8.285, 43.634

Deuteranomaly
64, 13.200, 37.513

Tritanomaly
64, 17.428, 10.230

Monochromacy



Original Color
64, 16.769, 26.636

Achromatopsia
65, 0.008, 296.813

Achromatomaly
64, 5.897, 25.257

CSS Examples

Text

The CSS property to change the color of the text to CIELCh 64, 16.769, 26.636 is called "color". The color property can be set on classes, ids or directly on the HTML element.

This example shows how text in the color `rgb(186, 145, 142)` looks like.

```
.text, #text, p{  
    color:rgb(186, 145, 142)  
}
```

If you want to add a text shadow in that color use the text-shadow property, you can generate a text shadow directly with our [CSS Text Shadow Generator](#).

Here you see how black text with a 4 pixel rgb(186, 145, 142) colored shadow looks like.

```
.shadow{ text-shadow: 4px 4px 2px rgb(186, 145, 142) }
```

Border

The CSS property to change the border of an element to CIELCh 64, 16.769, 26.636 is called "border". The border property can be set on classes, ids or directly on the HTML element.

This example shows the color as border, it can be applied via the CSS property "border" or "border-color".

```
.border, #border, table{ border:4px solid rgb(186, 145, 142) }
```

If only the border color should be changed use the property `border-color`.

```
.border{ border-color:rgb(186, 145, 142) }
```

If you want to add a box shadow in that color use:

Here you see how a box with a 4 pixel `rgb(186, 145, 142)` colored shadow looks like.

```
.boxshadow{ -moz-box-shadow:4px 4px 4px  
4px rgb(186, 145, 142); -webkit-box-  
shadow:4px 4px 4px 4px rgb(186, 145, 142);  
box-shadow:4px 4px 4px 4px rgb(186, 145,  
142) }
```

Background

The CSS property to change the background color of an element to CIELCh 64, 16.769, 26.636 is called "background". The background property can be set on classes, ids or directly on the HTML element.

```
.background, #background, body{  
background: rgb(186, 145, 142) }
```

If only the background color should be changed can be used:

```
.background{ background-color: rgb(186,  
145, 142) }
```

This example shows the color as background, it is applied via the CSS property "background".

To optimize and compress your CSS code, you can use our [online CSS compressor and optimizer](#) based on csstidy. If you want to create a linear or radial gradient as background or border, check our [CSS Gradient Generator](#).

Hey! You found this booklet interesting? Support Converting Colors with the new Membership Option!

The pro membership hides all ads, plus gives you double the colors in the color bucket, and more awesome pro features!

[Learn more, Memberships starting at \\$2.50/m!](#)

**Follow me
on Twitter!**

@ConvertingColor