

Converting Colors

CIELCh(64, 18.901, 36.177)

Have a look what the booklet for
CIELCh(64, 18.901, 36.177) contains.

CIELCh(64, 18.934, 36.184)	3
<i>Conversions</i>	4
<i>Details</i>	6
<i>Harmonies</i>	11
<i>Previews</i>	20
<i>Color Blindness Simulation</i>	23
<i>CSS Examples</i>	26

Color

CIELCh(64, 18.934, 36.184)

Conversions

Conversions Part 1

Format	Color
Hex	BD9188
RGB	189, 145, 136
RGB Percent	74%, 57%, 53%
CMY	0.2592, 0.4317, 0.4670
CMYK	0.00, 0.23, 0.28, 0.26
HSL	10°, 29%, 64%
HSV	10°, 28%, 74%
XYZ	35.5085, 32.8017, 27.7168
YIQ	157.1300, 29.1130, 6.5290

Conversions

Conversions Part 2

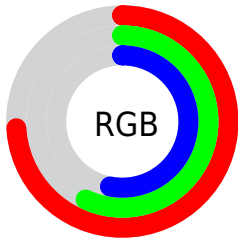
Format	Color
R _{YB}	189, 147, 136
Decimal	12423560
CIE _{Lab}	64.00, 15.28, 11.18
CIE _{LCh}	64, 18.934, 36.184
Y _{xy}	32.8017, 0.3698, 0.3416
Android (android.graphics.Color)	4290613640 (0xFFBD9188)
YUV	157.1300, -10.4171, 27.9500
Hunter-Lab	57.2727, 10.4410, 11.3979

Details

The CIELCh color **64, 18.934, 36.184** is a light color, and the websafe version is hex **CC9999**. A complement of this color would be **71, 15.593, 216.830**, and the grayscale version is **65, 0.008, 296.813**.

A 20% lighter version of the original color is **84, 18.949, 36.646**, and **44, 19.278, 35.820** is the 20% darker color. If you saturate the color by 10%, you get **60, 26.768, 36.553**, and if you desaturate by 10%, it is **68, 11.687, 35.997**.

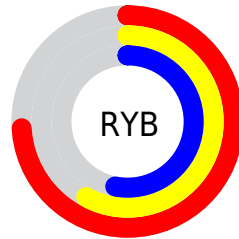
Distribution



Red (74%)

Green (57%)

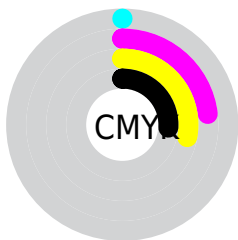
Blue (53%)



Red (74%)

Yellow (58%)

Blue (53%)

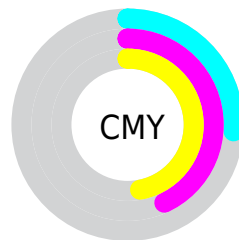


Cyan (0%)

Magenta (23%)

Yellow (28%)

Black (26%)



Cyan (26%)

Magenta (43%)

Yellow (47%)

Brightness & Saturation Gradients

These gradients show how the CIELCh color 64, 18.934, 36.184 changes by changing the brightness by 10 percent. The first figure shows a shift by +10% for each color and the second figure -10%.

Similar to the brightness gradients but the following saturation gradients show a change of the CIELCh color 64, 18.934, 36.184 by changing the saturation by 10% instead.

64, 18.934, 36.184

64, 18.934, 36.184

100, 18.934,
36.184

54, 18.934, 36.184

84, 18.934, 36.184

44, 18.934, 36.184

94, 18.934, 36.184

34, 18.934, 36.184

24, 18.934, 36.184

14, 18.934, 36.184

4, 18.934, 36.184

0, 18.934, 36.184

64, 18.934, 36.184

64, 18.934, 36.184

60, 26.768, 36.553

68, 11.687, 35.997

■ 56, 35.189, 37.133

■ 73, 5.003, 35.897

■ 52, 44.144, 37.973

■ 77, 1.164, 216.519

■ 49, 53.491, 39.085

■ 82, 6.862, 216.285

■ 46, 62.925, 40.403

■ 87, 12.145,
216.450

■ 43, 71.771, 41.651

■ 91, 17.061,
216.676

■ 41, 78.860, 42.360

■ 41, 80.184, 42.612

■ 96, 21.313,
198.558

■ 96, 21.424,
198.098

Harmonies

Complementary

The Complementary color scheme is a pair of colors which are on the opposite of each other on the color wheel.



64, 18.934, 36.184



71, 15.593, 216.830

Rectangle

The Rectangle color scheme consists of four colors that form a rectangle on the color wheel.



64, 18.934, 36.184



64, 18.934, 86.184



64, 18.934, 216.184



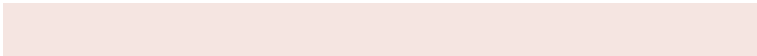
64, 18.934, 266.184

Sweetspot

The Sweet Spot groups the original color and five complimentary colors.



64, 18.933, 36.191



92, 6.136, 35.898



63, 31.364, 331.110



48, 4.386, 35.913



98, 0.011, 296.813



51, 0.007, 296.813

Same Dimension

The Same Dimension uses a secret algorithm to generate beautiful new colors.



64, 18.933, 36.191



78, 29.098, 36.404



71, 20.554, 87.552



37, 3.536, 35.911



34, 69.884, 42.808



4, 10.984, 30.404

Inverse Universe

The Inverse Universe completely reimagines the original color for something new.



71, 15.593, 216.830



88, 22.747, 217.188



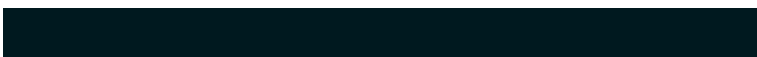
63, 20.426, 275.353



39, 3.334, 216.268



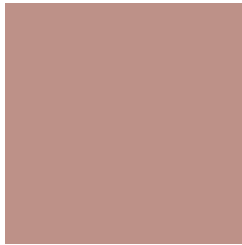
50, 30.464, 228.543



7, 9.616, 223.265

Previews

White Background



This preview shows how the CIELCh color 64, 18.934, 36.184 looks on a white background.

Color Contrast Check

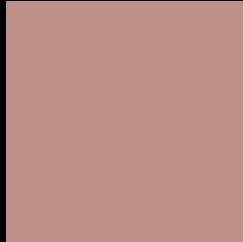
Large Text (above 18pt) WCAG AA × Fail

Any Text WCAG AA × Fail

Large Text (above 18pt) WCAG AAA × Fail

Any Text WCAG AAA × Fail

Black Background



This preview shows how the CIELCh color 64, 18.934, 36.184 looks on a black background.

Color Contrast Check

Large Text (above 18pt) WCAG AA ✓ Pass

Any Text WCAG AA ✓ Pass

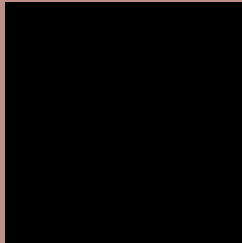
Large Text (above 18pt) WCAG AAA ✓ Pass

Any Text WCAG AAA ✓ Pass

If you want to check with other color combinations, try the [Color Contrast Checker](#).

CIELCh 64, 18.934, 36.184

Background



This preview shows how black text looks on a background with the CIELCh color 64, 18.934, 36.184.

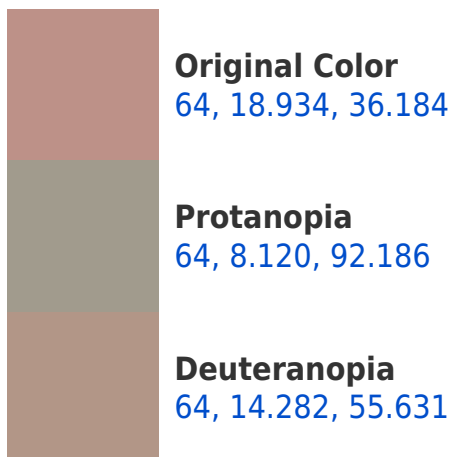


This preview shows how white text looks on a background with the CIELCh color 64, 18.934, 36.184.

Color Blindness Simulation

Color vision deficiency is a very complex topic, and I could not describe the different causes any better than Wikipedia does, so if you want to learn more, you should check out their [article about color blindness](#).

Dichromacy





Tritanopia
64, 20.285, 4.131

Trichromacy



Original Color
64, 18.934, 36.184

Protanomaly
64, 10.516, 59.099

Deuteranomaly
64, 15.859, 47.381

Tritanomaly
64, 19.000, 14.676

Monochromacy



Original Color
64, 18.934, 36.184

Achromatopsia
65, 0.008, 296.813

Achromatomaly
64, 6.691, 39.199

CSS Examples

Text

The CSS property to change the color of the text to CIELCh 64, 18.934, 36.184 is called "color". The color property can be set on classes, ids or directly on the HTML element.

This example shows how text in the color `rgb(189, 145, 136)` looks like.

```
.text, #text, p{  
    color:rgb(189, 145, 136)  
}
```

If you want to add a text shadow in that color use the text-shadow property, you can generate a text shadow directly with our [CSS Text Shadow Generator](#).

Here you see how black text with a 4 pixel rgb(189, 145, 136) colored shadow looks like.

```
.shadow{ text-shadow: 4px 4px 2px rgb(189, 145, 136) }
```

Border

The CSS property to change the border of an element to CIELCh 64, 18.934, 36.184 is called "border". The border property can be set on classes, ids or directly on the HTML element.

This example shows the color as border, it can be applied via the CSS property "border" or "border-color".

```
.border, #border, table{ border:4px solid rgb(189, 145, 136) }
```

If only the border color should be changed use the property `border-color`.

```
.border{ border-color:rgb(189, 145, 136) }
```

If you want to add a box shadow in that color use:

Here you see how a box with a 4 pixel `rgb(189, 145, 136)` colored shadow looks like.

```
.boxshadow{ -moz-box-shadow:4px 4px 4px  
4px rgb(189, 145, 136); -webkit-box-  
shadow:4px 4px 4px 4px rgb(189, 145, 136);  
box-shadow:4px 4px 4px 4px rgb(189, 145,  
136) }
```

Background

The CSS property to change the background color of an element to CIELCh 64, 18.934, 36.184 is called "background". The background property can be set on classes, ids or directly on the HTML element.

```
.background, #background, body{  
background: rgb(189, 145, 136) }
```

If only the background color should be changed can be used:

```
.background{ background-color: rgb(189,  
145, 136) }
```

This example shows the color as background, it is applied via the CSS property "background".

To optimize and compress your CSS code, you can use our [online CSS compressor and optimizer](#) based on csstidy. If you want to create a linear or radial gradient as background or border, check our [CSS Gradient Generator](#).

Hey! You found this booklet interesting? Support Converting Colors with the new Membership Option!

The pro membership hides all ads, plus gives you double the colors in the color bucket, and more awesome pro features!

[Learn more, Memberships starting at \\$2.50/m!](#)

**Follow me
on Twitter!**

@ConvertingColor