

Converting Colors

CIELCh(64, 19.836, 18.218)

Have a look what the booklet for
CIELCh(64, 19.836, 18.218) contains.

CIELCh(64, 19.836, 18.218)	3
<i>Conversions</i>	4
<i>Details</i>	6
<i>Harmonies</i>	11
<i>Previews</i>	20
<i>Color Blindness Simulation</i>	23
<i>CSS Examples</i>	26

Color

CIELCh(64, 19.836, 18.218)

Conversions

Conversions Part 1	
Format	Color
Hex	C08F91
RGB	192, 143, 145
RGB Percent	75%, 56%, 57%
CMY	0.2479, 0.4400, 0.4321
CMYK	0.00, 0.26, 0.24, 0.25
HSL	358°, 28%, 66%
HSV	358°, 26%, 75%
XYZ	36.5720, 32.8017, 31.1115
YIQ	157.8790, 28.5620, 11.0100

Conversions

Conversions Part 2

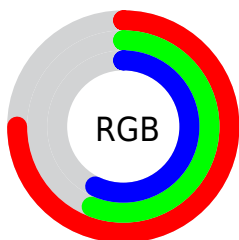
Format	Color
RYB	192, 143, 145
Decimal	12619665
CIELab	64.00, 18.84, 6.20
CIELCh	64, 19.836, 18.218
Yxy	32.8017, 0.3640, 0.3264
Android (android.graphics.Color)	4290809745 (0xFFC08F91)
YUV	157.8790, -6.3493, 29.9241
Hunter-Lab	57.2727, 13.7553, 7.8836

Details

The CIELCh color **64, 19.836, 18.218** is a light color, and the websafe version is hex **CC9999**. A complement of this color would be **74, 16.949, 194.437**, and the grayscale version is **65, 0.008, 296.813**.

A 20% lighter version of the original color is **84, 19.747, 17.924**, and **44, 19.769, 17.052** is the 20% darker color. If you saturate the color by 10%, you get **59, 28.539, 19.541**, and if you desaturate by 10%, it is **69, 11.645, 17.176**.

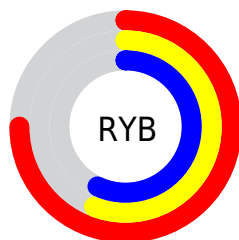
Distribution



Red (75%)

Green (56%)

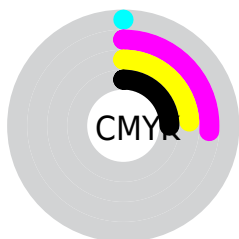
Blue (57%)



Red (75%)

Yellow (56%)

Blue (57%)

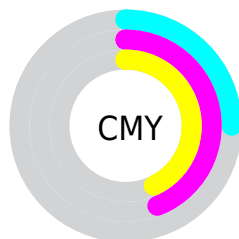


Cyan (0%)

Magenta (26%)

Yellow (24%)

Black (25%)



Cyan (25%)

Magenta (44%)

Yellow (43%)


Brightness & Saturation Gradients

These gradients show how the CIELCh color 64, 19.836, 18.218 changes by changing the brightness by 10 percent. The first figure shows a shift by +10% for each color and the second figure -10%.

Similar to the brightness gradients but the following saturation gradients show a change of the CIELCh color 64, 19.836, 18.218 by changing the saturation by 10% instead.

 64, 19.836, 18.218

 64, 19.836, 18.218

 100, 19.836,
18.218

 54, 19.836, 18.218

 84, 19.836, 18.218

 44, 19.836, 18.218

 94, 19.836, 18.218

 34, 19.836, 18.218

 24, 19.836, 18.218

 14, 19.836, 18.218

 4, 19.836, 18.218

 0, 19.836, 18.218

 64, 19.836, 18.218

 64, 19.836, 18.218

 59, 28.539, 19.541

 69, 11.645, 17.176

 54, 37.662, 21.229

 75, 4.002, 16.271


 50, 47.026, 23.400

 80, 3.103, 195.914


 46, 56.367, 26.167

 86, 9.707, 195.258

 43, 65.363, 29.582

 91, 15.853,
194.788

 41, 73.604, 33.488

 96, 20.572,
198.151

 40, 80.326, 37.251

 40, 82.655, 38.445

Harmonies

Complementary

The Complementary color scheme is a pair of colors which are on the opposite of each other on the color wheel.



64, 19.836, 18.218



74, 16.949, 194.437

Rectangle

The Rectangle color scheme consists of four colors that form a rectangle on the color wheel.



64, 19.836, 18.218



64, 19.836, 68.218



64, 19.836, 198.218



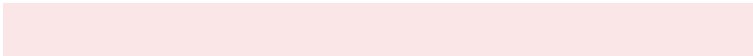
64, 19.836, 248.218

Sweetspot

The Sweet Spot groups the original color and five complimentary colors.



64, 19.834, 18.223



93, 7.234, 16.509



65, 31.960, 324.393



49, 5.169, 16.643



99, 0.012, 296.813



52, 0.007, 296.813

Same Dimension

The Same Dimension uses a secret algorithm to generate beautiful new colors.



64, 19.834, 18.223



78, 30.460, 18.970



69, 16.383, 66.896



38, 4.189, 16.619



33, 72.130, 38.062



3, 14.017, 17.177

Inverse Universe

The Inverse Universe completely reimagines the original color for something new.



64, 19.834, 18.223



78, 30.460, 18.970



68, 14.963, 253.466



38, 4.189, 16.619



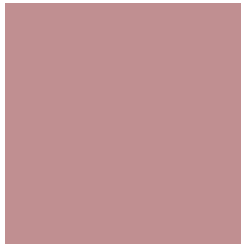
33, 72.130, 38.062



3, 14.017, 17.177

Previews

White Background



This preview shows how the CIELCh color 64, 19.836, 18.218 looks on a white background.

Color Contrast Check

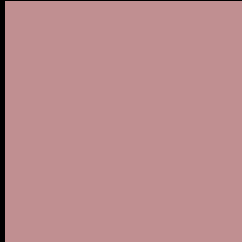
Large Text (above 18pt) WCAG AA × Fail

Any Text WCAG AA × Fail

Large Text (above 18pt) WCAG AAA × Fail

Any Text WCAG AAA × Fail

Black Background



This preview shows how the CIE LCh color 64, 19.836, 18.218 looks on a black background.

Color Contrast Check

Large Text (above 18pt) WCAG AA ✓ Pass

Any Text WCAG AA ✓ Pass

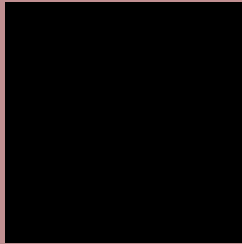
Large Text (above 18pt) WCAG AAA ✓ Pass

Any Text WCAG AAA ✓ Pass

If you want to check with other color combinations, try the [Color Contrast Checker](#).

CIELCh 64, 19.836, 18.218

Background



This preview shows how black text looks on a background with the CIELCh color 64, 19.836, 18.218.



This preview shows how white text looks on a background with the CIELCh color 64, 19.836, 18.218.

Color Blindness Simulation

Color vision deficiency is a very complex topic, and I could not describe the different causes any better than Wikipedia does, so if you want to learn more, you should check out their [article about color blindness](#).

Dichromacy



Original Color

64, 19.836, 18.218

Protanopia

64, 2.696, 74.709

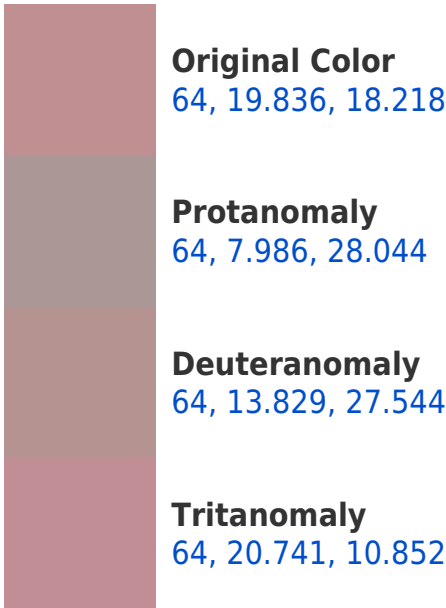
Deuteranopia

64, 10.810, 41.197

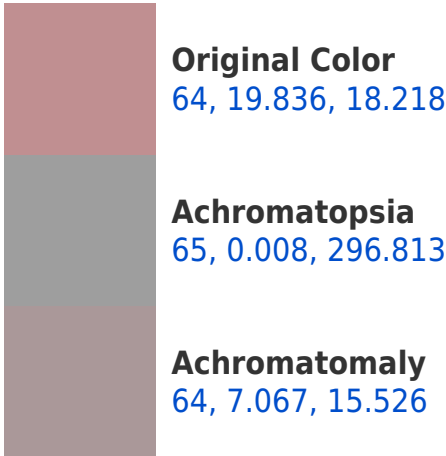


Tritanopia
64, 20.955, 6.363

Trichromacy



Monochromacy



CSS Examples

Text

The CSS property to change the color of the text to CIElCh 64, 19.836, 18.218 is called "color". The color property can be set on classes, ids or directly on the HTML element.

This example shows how text in the color `rgb(192, 143, 145)` looks like.

```
.text, #text, p{  
    color:rgb(192, 143, 145)  
}
```

If you want to add a text shadow in that color use the text-shadow property, you can generate a text shadow directly with our [CSS Text Shadow Generator](#).

Here you see how black text with a 4 pixel rgb(192, 143, 145) colored shadow looks like.

```
.shadow{ text-shadow: 4px 4px 2px rgb(192, 143, 145) }
```

Border

The CSS property to change the border of an element to CIELCh 64, 19.836, 18.218 is called "border". The border property can be set on classes, ids or directly on the HTML element.

This example shows the color as border, it can be applied via the CSS property "border" or "border-color".

```
.border, #border, table{ border:4px solid rgb(192, 143, 145) }
```

If only the border color should be changed use the property border-color.

```
.border{ border-color:rgb(192, 143, 145) }
```

If you want to add a box shadow in that color use:

Here you see how a box with a 4 pixel rgb(192, 143, 145) colored shadow looks like.

```
.boxshadow{ -moz-box-shadow:4px 4px 4px  
4px rgb(192, 143, 145); -webkit-box-  
shadow:4px 4px 4px 4px rgb(192, 143, 145);  
box-shadow:4px 4px 4px 4px rgb(192, 143,  
145) }
```

Background

The CSS property to change the background color of an element to CIELCh 64, 19.836, 18.218 is called "background". The background property can be set on classes, ids or directly on the HTML element.

```
.background, #background, body{  
background: rgb(192, 143, 145) }
```

If only the background color should be changed can be used:

```
.background{ background-color: rgb(192,  
143, 145) }
```

This example shows the color as background, it is applied via the CSS property "background".

To optimize and compress your CSS code, you can use our [online CSS compressor and optimizer](#) based on csstidy. If you want to create a linear or radial gradient as background or border, check our [CSS Gradient Generator](#).

Hey! You found this booklet
interesting? Support Converting
Colors with the new Membership
Option!

The pro membership hides all ads, plus gives you
double the colors in the color bucket, and more
awesome pro features!

[Learn more, Memberships starting at \\$2.50/m!](#)

**Follow me
on Twitter!**

@ConvertingColor