

Converting Colors

CIELCh(64, 22.641, 45.072)

Have a look what the booklet for
CIELCh(64, 22.641, 45.072) contains.

CIELCh(64, 22.955, 45.107)	3
<i>Conversions</i>	4
<i>Details</i>	6
<i>Harmonies</i>	11
<i>Previews</i>	20
<i>Color Blindness Simulation</i>	23
<i>CSS Examples</i>	26

Color

CIELCh(64, 22.955, 45.107)

Conversions

Conversions Part 1

Format	Color
Hex	C1907F
RGB	193, 144, 127
RGB Percent	76%, 56%, 50%
CMY	0.2433, 0.4354, 0.5021
CMYK	0.00, 0.25, 0.34, 0.24
HSL	15°, 35%, 63%
HSV	15°, 34%, 76%
XYZ	35.7811, 32.8017, 24.5138
YIQ	156.7130, 34.6610, 5.1010

Conversions

Conversions Part 2

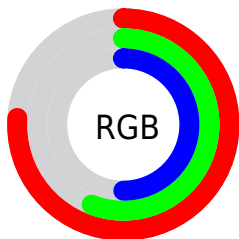
Format	Color
RYB	193, 150, 127
Decimal	12685439
CIELab	64.00, 16.20, 16.26
CIELCh	64, 22.955, 45.107
Yxy	32.8017, 0.3843, 0.3523
Android (android.graphics.Color)	4290875519 (0xFFC1907F)
YUV	156.7130, -14.6485, 31.8237
Hunter-Lab	57.2727, 11.2906, 14.7137

Details

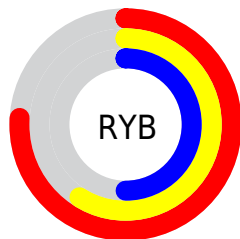
The CIELCh color **64, 22.955, 45.107** is a light color, and the websafe version is hex **CC9999**. A complement of this color would be **69, 18.330, 229.148**, and the grayscale version is **65, 0.008, 296.813**.

A 20% lighter version of the original color is **84, 23.029, 44.782**, and **44, 23.018, 44.272** is the 20% darker color. If you saturate the color by 10%, you get **60, 30.885, 45.017**, and if you desaturate by 10%, it is **68, 15.599, 45.341**.

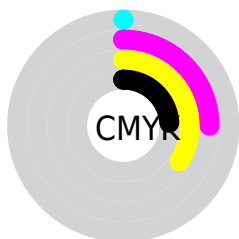
Distribution



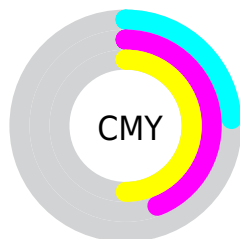
- Red (76%)
- Green (56%)
- Blue (50%)



- Red (76%)
- Yellow (59%)
- Blue (50%)



- Cyan (0%)
- Magenta (25%)
- Yellow (34%)
- Black (24%)



- Cyan (24%)
- Magenta (44%)
- Yellow (50%)

Brightness & Saturation Gradients

These gradients show how the CIELCh color 64, 22.955, 45.107 changes by changing the brightness by 10 percent. The first figure shows a shift by +10% for each color and the second figure -10%.

Similar to the brightness gradients but the following saturation gradients show a change of the CIELCh color 64, 22.955, 45.107 by changing the saturation by 10% instead.

■ 64, 22.955, 45.107

■ 64, 22.955, 45.107

■ 100, 22.955,
45.107

■ 54, 22.955, 45.107

■ 84, 22.955, 45.107

■ 44, 22.955, 45.107

■ 94, 22.955, 45.107

■ 34, 22.955, 45.107

■ 24, 22.955, 45.107

■ 14, 22.955, 45.107

■ 4, 22.955, 45.107

■ 0, 22.955, 45.107

■ 64, 22.955, 45.107

■ 64, 22.955, 45.107

■ 60, 30.885, 45.017

■ 68, 15.599, 45.341

56, 39.383, 45.077

72, 8.795, 45.662

53, 48.373, 45.298

76, 2.501, 45.944

50, 57.647, 45.631

81, 3.333, 226.791

47, 66.718, 45.900

85, 8.757, 227.226

45, 74.537, 45.661

89, 13.819,
227.762

44, 78.445, 45.463

93, 17.419,
217.110

96, 20.222,
198.173

Harmonies

Complementary

The Complementary color scheme is a pair of colors which are on the opposite of each other on the color wheel.



64, 22.955, 45.107



69, 18.330, 229.148

Rectangle

The Rectangle color scheme consists of four colors that form a rectangle on the color wheel.



64, 22.955, 45.107



64, 22.955, 95.107



64, 22.955, 225.107



64, 22.955, 275.107

Sweetspot

The Sweet Spot groups the original color and five complimentary colors.



64, 22.954, 45.113



93, 7.519, 45.802



61, 36.648, 334.677



49, 5.158, 45.753



99, 0.012, 296.813



52, 0.007, 296.813

Same Dimension

The Same Dimension uses a secret algorithm to generate beautiful new colors.



64, 22.954, 45.113



78, 34.981, 45.028



72, 27.563, 93.064



39, 3.457, 45.828



36, 68.142, 45.873



5, 12.086, 35.958

Inverse Universe

The Inverse Universe completely reimagines the original color for something new.



69, 18.330, 229.148



85, 26.354, 230.162



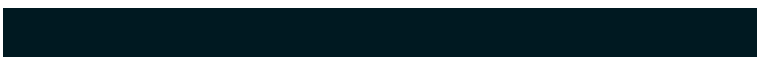
60, 28.266, 282.384



40, 3.276, 226.958



47, 32.568, 247.264



7, 10.376, 237.987

Previews

White Background



This preview shows how the CIELCh color 64, 22.955, 45.107 looks on a white background.

Color Contrast Check

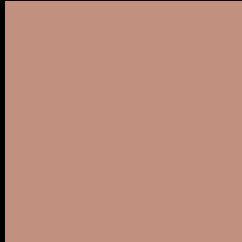
Large Text (above 18pt) WCAG AA × Fail

Any Text WCAG AA × Fail

Large Text (above 18pt) WCAG AAA × Fail

Any Text WCAG AAA × Fail

Black Background



This preview shows how the CIELCh color 64, 22.955, 45.107 looks on a black background.

Color Contrast Check

Large Text (above 18pt) WCAG AA ✓ Pass

Any Text WCAG AA ✓ Pass

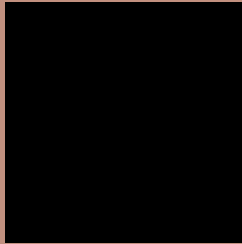
Large Text (above 18pt) WCAG AAA ✓ Pass

Any Text WCAG AAA ✓ Pass

If you want to check with other color combinations, try the [Color Contrast Checker](#).

CIELCh 64, 22.955, 45.107

Background



This preview shows how black text looks on a background with the CIELCh color 64, 22.955, 45.107.



This preview shows how white text looks on a background with the CIELCh color 64, 22.955, 45.107.

Color Blindness Simulation

Color vision deficiency is a very complex topic, and I could not describe the different causes any better than Wikipedia does, so if you want to learn more, you should check out their [article about color blindness](#).

Dichromacy



Original Color

64, 22.955, 45.107

Protanopia

64, 13.159, 94.430

Deuteranopia

64, 18.696, 62.882



Tritanopia
64, 22.665, 6.315

Trichromacy



Original Color
64, 22.955, 45.107

Protanomaly
64, 15.132, 69.908

Deuteranomaly
64, 19.997, 55.847

Tritanomaly
64, 21.596, 20.127

Monochromacy



Original Color
64, 22.955, 45.107

Achromatopsia
65, 0.008, 296.813

Achromatomaly
64, 7.902, 44.791

CSS Examples

Text

The CSS property to change the color of the text to CIELCh 64, 22.955, 45.107 is called "color". The color property can be set on classes, ids or directly on the HTML element.

This example shows how text in the color `rgb(193, 144, 127)` looks like.

```
.text, #text, p{  
    color:rgb(193, 144, 127)  
}
```

If you want to add a text shadow in that color use the text-shadow property, you can generate a text shadow directly with our [CSS Text Shadow Generator](#).

Here you see how black text with a 4 pixel rgb(193, 144, 127) colored shadow looks like.

```
.shadow{ text-shadow: 4px 4px 2px rgb(193, 144, 127) }
```

Border

The CSS property to change the border of an element to CIELCh 64, 22.955, 45.107 is called "border". The border property can be set on classes, ids or directly on the HTML element.

This example shows the color as border, it can be applied via the CSS property "border" or "border-color".

```
.border, #border, table{ border:4px solid rgb(193, 144, 127) }
```

If only the border color should be changed use the property `border-color`.

```
.border{ border-color:rgb(193, 144, 127) }
```

If you want to add a box shadow in that color use:

Here you see how a box with a 4 pixel `rgb(193, 144, 127)` colored shadow looks like.

```
.boxshadow{ -moz-box-shadow:4px 4px 4px  
4px rgb(193, 144, 127); -webkit-box-  
shadow:4px 4px 4px 4px rgb(193, 144, 127);  
box-shadow:4px 4px 4px 4px rgb(193, 144,  
127) }
```

Background

The CSS property to change the background color of an element to CIELCh 64, 22.955, 45.107 is called "background". The background property can be set on classes, ids or directly on the HTML element.

```
.background, #background, body{  
background: rgb(193, 144, 127) }
```

If only the background color should be changed can be used:

```
.background{ background-color: rgb(193,  
144, 127) }
```

This example shows the color as background, it is applied via the CSS property "background".

To optimize and compress your CSS code, you can use our [online CSS compressor and optimizer](#) based on csstidy. If you want to create a linear or radial gradient as background or border, check our [CSS Gradient Generator](#).

Hey! You found this booklet interesting? Support Converting Colors with the new Membership Option!

The pro membership hides all ads, plus gives you double the colors in the color bucket, and more awesome pro features!

[Learn more, Memberships starting at \\$2.50/m!](#)

**Follow me
on Twitter!**

@ConvertingColor