

Converting Colors

CIELCh(64, 24.800, 55.994)

Have a look what the booklet for
CIELCh(64, 24.800, 55.994) contains.

CIELCh(64, 24.761, 55.979)	3
<i>Conversions</i>	4
<i>Details</i>	6
<i>Harmonies</i>	11
<i>Previews</i>	20
<i>Color Blindness Simulation</i>	23
<i>CSS Examples</i>	26

Color

CIELCh(64, 24.761, 55.979)

Conversions

Conversions Part 1

Format	Color
Hex	BF9177
RGB	191, 145, 119
RGB Percent	75%, 57%, 47%
CMY	0.2497, 0.4302, 0.5322
CMYK	0.00, 0.24, 0.38, 0.25
HSL	22°, 36%, 61%
HSV	22°, 38%, 75%
XYZ	35.0877, 32.8017, 22.0276
YIQ	155.7900, 35.7620, 1.6660

Conversions

Conversions Part 2

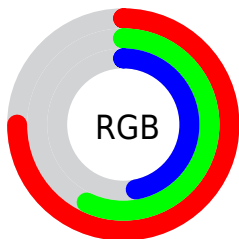
Format	Color
RYB	191, 160, 119
Decimal	12554615
CIELab	64.00, 13.85, 20.52
CIELCh	64, 24.761, 55.979
Yxy	32.8017, 0.3902, 0.3648
Android (android.graphics.Color)	4290744695 (0xFFBF9177)
YUV	155.7900, -18.1375, 30.8792
Hunter-Lab	57.2727, 9.1292, 17.2875

Details

The CIELCh color **64, 24.761, 55.979** is a light color, and the websafe version is hex **CC9966**. A complement of this color would be **66, 20.282, 244.251**, and the grayscale version is **64, 0.008, 296.813**.

A 20% lighter version of the original color is **84, 25.000, 56.183**, and **44, 24.974, 55.571** is the 20% darker color. If you saturate the color by 10%, you get **61, 32.457, 55.286**, and if you desaturate by 10%, it is **67, 17.553, 56.749**.

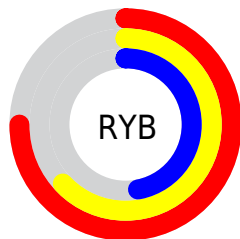
Distribution



Red (75%)

Green (57%)

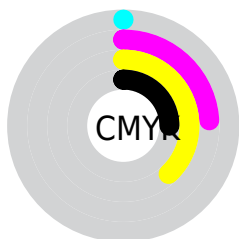
Blue (47%)



Red (75%)

Yellow (63%)

Blue (47%)

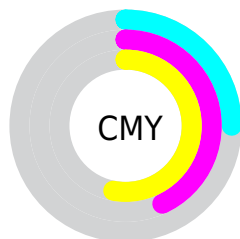


Cyan (0%)

Magenta (24%)

Yellow (38%)

Black (25%)



Cyan (25%)

Magenta (43%)

Yellow (53%)

Brightness & Saturation Gradients

These gradients show how the CIELCh color 64, 24.761, 55.979 changes by changing the brightness by 10 percent. The first figure shows a shift by +10% for each color and the second figure -10%.

Similar to the brightness gradients but the following saturation gradients show a change of the CIELCh color 64, 24.761, 55.979 by changing the saturation by 10% instead.

64, 24.761, 55.979

64, 24.761, 55.979

100, 24.761,
55.979

54, 24.761, 55.979

84, 24.761, 55.979

44, 24.761, 55.979

94, 24.761, 55.979

34, 24.761, 55.979

24, 24.761, 55.979

14, 24.761, 55.979

4, 24.761, 55.979

0, 24.761, 55.979

64, 24.761, 55.979

64, 24.761, 55.979

61, 32.457, 55.286

67, 17.553, 56.749

57, 40.615, 54.653

71, 10.822, 57.559

54, 49.125, 54.059

75, 4.533, 58.366

52, 57.703, 53.411

78, 1.356, 239.691

49, 65.724, 52.473

82, 6.887, 240.321

47, 72.229, 50.902

86, 12.101,
241.192

46, 73.730, 50.611

90, 17.038,
242.070

93, 17.705,
218.873

96, 20.708,
198.143

Harmonies

Complementary

The Complementary color scheme is a pair of colors which are on the opposite of each other on the color wheel.



64, 24.761, 55.979



66, 20.282, 244.251

Rectangle

The Rectangle color scheme consists of four colors that form a rectangle on the color wheel.



64, 24.761, 55.979



64, 24.761, 105.979



64, 24.761, 235.979



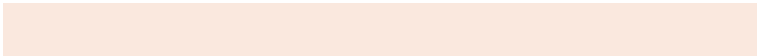
64, 24.761, 285.979

Sweetspot

The Sweet Spot groups the original color and five complimentary colors.



64, 24.760, 55.985



93, 8.196, 58.089



59, 37.378, 339.359



49, 5.531, 57.978



99, 0.012, 296.813



52, 0.007, 296.813

Same Dimension

The Same Dimension uses a secret algorithm to generate beautiful new colors.



64, 24.760, 55.985



78, 37.824, 55.415



73, 33.024, 99.053



39, 3.415, 58.233



39, 64.483, 51.102



5, 11.651, 44.116

Inverse Universe

The Inverse Universe completely reimagines the original color for something new.



66, 20.282, 244.251



81, 29.453, 245.969



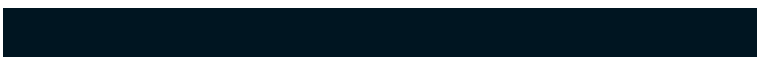
56, 35.125, 288.679



39, 3.274, 240.147



42, 38.347, 266.024



6, 11.089, 254.332

Previews

White Background



This preview shows how the CIELCh color 64, 24.761, 55.979 looks on a white background.

Color Contrast Check

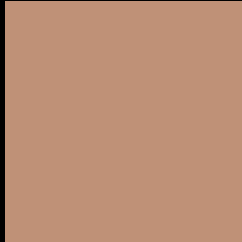
Large Text (above 18pt) WCAG AA × Fail

Any Text WCAG AA × Fail

Large Text (above 18pt) WCAG AAA × Fail

Any Text WCAG AAA × Fail

Black Background



This preview shows how the CIE LCh color 64, 24.761, 55.979 looks on a black background.

Color Contrast Check

Large Text (above 18pt) WCAG AA ✓ Pass

Any Text WCAG AA ✓ Pass

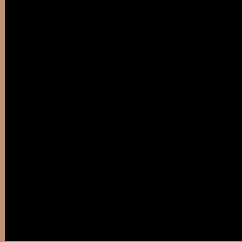
Large Text (above 18pt) WCAG AAA ✓ Pass

Any Text WCAG AAA ✓ Pass

If you want to check with other color combinations, try the [Color Contrast Checker](#).

CIELCh 64, 24.761, 55.979

Background



This preview shows how black text looks on a background with the CIELCh color 64, 24.761, 55.979.



This preview shows how white text looks on a background with the CIELCh color 64, 24.761, 55.979.

Color Blindness Simulation

Color vision deficiency is a very complex topic, and I could not describe the different causes any better than Wikipedia does, so if you want to learn more, you should check out their [article about color blindness](#).

Dichromacy



Original Color

64, 24.761, 55.979

Protanopia

64, 17.663, 94.696

Deuteranopia

64, 22.293, 67.843



Tritanopia
64, 22.247, 5.965

Trichromacy



Original Color
64, 24.761, 55.979

Protanomaly
64, 19.114, 76.486

Deuteranomaly
64, 23.119, 63.888

Tritanomaly
64, 21.003, 25.925

Monochromacy



Original Color
64, 24.761, 55.979

Achromatopsia
64, 0.008, 296.813

Achromatomaly
64, 8.452, 55.987

CSS Examples

Text

The CSS property to change the color of the text to CIELCh 64, 24.761, 55.979 is called "color". The color property can be set on classes, ids or directly on the HTML element.

This example shows how text in the color `rgb(191, 145, 119)` looks like.

```
.text, #text, p{  
    color:rgb(191, 145, 119)  
}
```

If you want to add a text shadow in that color use the text-shadow property, you can generate a text shadow directly with our [CSS Text Shadow Generator](#).

Here you see how black text with a 4 pixel rgb(191, 145, 119) colored shadow looks like.

```
.shadow{ text-shadow: 4px 4px 2px rgb(191, 145, 119) }
```

Border

The CSS property to change the border of an element to CIELCh 64, 24.761, 55.979 is called "border". The border property can be set on classes, ids or directly on the HTML element.

This example shows the color as border, it can be applied via the CSS property "border" or "border-color".

```
.border, #border, table{ border:4px solid rgb(191, 145, 119) }
```

If only the border color should be changed use the property `border-color`.

```
.border{ border-color:rgb(191, 145, 119) }
```

If you want to add a box shadow in that color use:

Here you see how a box with a 4 pixel `rgb(191, 145, 119)` colored shadow looks like.

```
.boxshadow{ -moz-box-shadow:4px 4px 4px  
4px rgb(191, 145, 119); -webkit-box-  
shadow:4px 4px 4px 4px rgb(191, 145, 119);  
box-shadow:4px 4px 4px 4px rgb(191, 145,  
119) }
```

Background

The CSS property to change the background color of an element to CIELCh 64, 24.761, 55.979 is called "background". The background property can be set on classes, ids or directly on the HTML element.

```
.background, #background, body{  
background: rgb(191, 145, 119) }
```

If only the background color should be changed can be used:

```
.background{ background-color: rgb(191,  
145, 119) }
```

This example shows the color as background, it is applied via the CSS property "background".

To optimize and compress your CSS code, you can use our [online CSS compressor and optimizer](#) based on csstidy. If you want to create a linear or radial gradient as background or border, check our [CSS Gradient Generator](#).

Hey! You found this booklet interesting? Support Converting Colors with the new Membership Option!

The pro membership hides all ads, plus gives you double the colors in the color bucket, and more awesome pro features!

[Learn more, Memberships starting at \\$2.50/m!](#)

**Follow me
on Twitter!**

@ConvertingColor