

Converting Colors

CIELCh(64, 25.606, 41.553)

Have a look what the booklet for
CIELCh(64, 25.606, 41.553) contains.

CIELCh(64, 25.583, 41.506)	3
<i>Conversions</i>	4
<i>Details</i>	6
<i>Harmonies</i>	11
<i>Previews</i>	20
<i>Color Blindness Simulation</i>	23
<i>CSS Examples</i>	26

Color

CIELCh(64, 25.583, 41.506)

Conversions

Conversions Part 1

Format	Color
Hex	C68E7E
RGB	198, 142, 126
RGB Percent	78%, 56%, 49%
CMY	0.2240, 0.4436, 0.5063
CMYK	0.00, 0.28, 0.36, 0.22
HSL	13°, 39%, 63%
HSV	13°, 36%, 78%
XYZ	36.6677, 32.8017, 24.0980
YIQ	156.9200, 38.5120, 6.8960

Conversions

Conversions Part 2

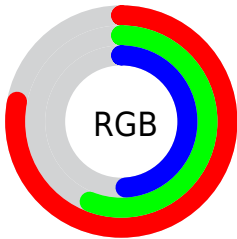
Format	Color
RYB	198, 147, 126
Decimal	13012606
CIELab	64.00, 19.16, 16.95
CIElCh	64, 25.583, 41.506
Yxy	32.8017, 0.3919, 0.3506
Android (android.graphics.Color)	4291202686 (0xFFC68E7E)
YUV	156.9200, -15.2436, 36.0272
Hunter-Lab	57.2727, 14.0537, 15.1442

Details

The CIELCh color **64, 25.583, 41.506** is a light color, and the websafe version is hex **CC9999**. A complement of this color would be **71, 19.866, 224.455**, and the grayscale version is **65, 0.008, 296.813**.

A 20% lighter version of the original color is **84, 25.087, 41.630**, and **44, 25.496, 41.005** is the 20% darker color. If you saturate the color by 10%, you get **60, 33.971, 41.692**, and if you desaturate by 10%, it is **68, 17.799, 41.498**.

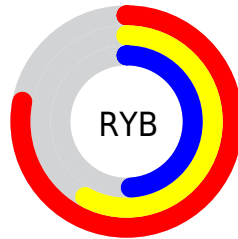
Distribution



Red (78%)

Green (56%)

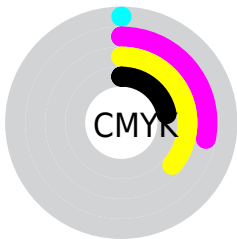
Blue (49%)



Red (78%)

Yellow (58%)

Blue (49%)

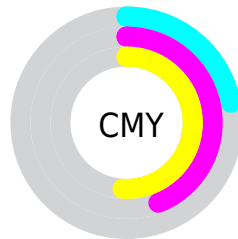


Cyan (0%)

Magenta (28%)

Yellow (36%)

Black (22%)



Cyan (22%)

Magenta (44%)

Yellow (51%)

Brightness & Saturation Gradients

These gradients show how the CIELCh color 64, 25.583, 41.506 changes by changing the brightness by 10 percent. The first figure shows a shift by +10% for each color and the second figure -10%.

Similar to the brightness gradients but the following saturation gradients show a change of the CIELCh color 64, 25.583, 41.506 by changing the saturation by 10% instead.

64, 25.583, 41.506

64, 25.583, 41.506

100, 25.583,
41.506

54, 25.583, 41.506

84, 25.583, 41.506

44, 25.583, 41.506

94, 25.583, 41.506

34, 25.583, 41.506

24, 25.583, 41.506

14, 25.583, 41.506

4, 25.583, 41.506

0, 25.583, 41.506

64, 25.583, 41.506

64, 25.583, 41.506

60, 33.971, 41.692

68, 17.799, 41.498

56, 42.939, 42.069

73, 10.606, 41.611

53, 52.378, 42.647

77, 3.967, 41.765

49, 62.020, 43.366

81, 2.169, 222.463

47, 71.254, 43.996

86, 7.855, 222.661

45, 78.837, 44.012

91, 13.141,
223.048

44, 81.325, 44.104

95, 17.111,
207.772

96, 18.749,
198.266

Harmonies

Complementary

The Complementary color scheme is a pair of colors which are on the opposite of each other on the color wheel.



64, 25.583, 41.506



71, 19.866, 224.455

Rectangle

The Rectangle color scheme consists of four colors that form a rectangle on the color wheel.



64, 25.583, 41.506



64, 25.583, 91.506



64, 25.583, 221.506



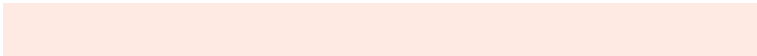
64, 25.583, 271.506

Sweetspot

The Sweet Spot groups the original color and five complimentary colors.



64, 25.582, 41.512



94, 8.568, 41.699



62, 40.641, 333.520



49, 5.789, 41.675



0, 0.000, 0.000



53, 0.007, 296.813

Same Dimension

The Same Dimension uses a secret algorithm to generate beautiful new colors.



64, 25.582, 41.512



77, 39.324, 41.648



73, 29.081, 90.350



40, 3.584, 41.728



36, 70.141, 44.476



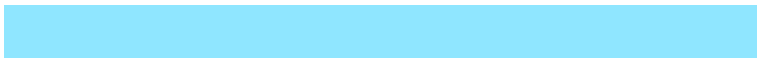
5, 14.012, 32.604

Inverse Universe

The Inverse Universe completely reimagines the original color for something new.



71, 19.866, 224.455



87, 28.494, 225.444



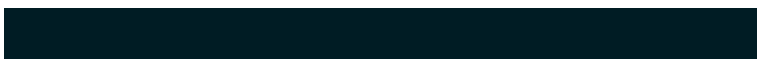
61, 29.510, 280.640



41, 3.387, 222.551



49, 31.864, 239.951



9, 11.127, 230.340

Previews

White Background



This preview shows how the CIELCh color 64, 25.583, 41.506 looks on a white background.

Color Contrast Check

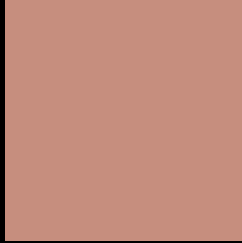
Large Text (above 18pt) WCAG AA × Fail

Any Text WCAG AA × Fail

Large Text (above 18pt) WCAG AAA × Fail

Any Text WCAG AAA × Fail

Black Background



This preview shows how the CIE LCh color 64, 25.583, 41.506 looks on a black background.

Color Contrast Check

Large Text (above 18pt) WCAG AA ✓ Pass

Any Text WCAG AA ✓ Pass

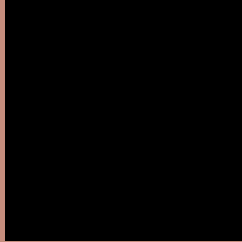
Large Text (above 18pt) WCAG AAA ✓ Pass

Any Text WCAG AAA ✓ Pass

If you want to check with other color combinations, try the [Color Contrast Checker](#).

CIELCh 64, 25.583, 41.506

Background



This preview shows how black text looks on a background with the CIELCh color 64, 25.583, 41.506.

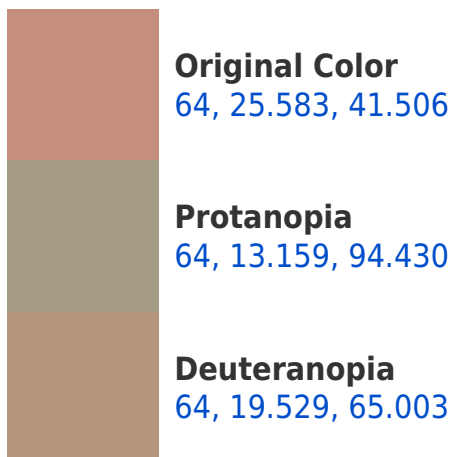


This preview shows how white text looks on a background with the CIELCh color 64, 25.583, 41.506.

Color Blindness Simulation

Color vision deficiency is a very complex topic, and I could not describe the different causes any better than Wikipedia does, so if you want to learn more, you should check out their [article about color blindness](#).

Dichromacy





Tritanopia
64, 24.989, 9.383

Trichromacy



Original Color
64, 25.583, 41.506

Protanomaly
64, 15.578, 65.168

Deuteranomaly
64, 21.105, 53.859

Tritanomaly
64, 24.138, 20.561

Monochromacy



Original Color
64, 25.583, 41.506

Achromatopsia
65, 0.008, 296.813

Achromatomaly
64, 8.648, 42.583

CSS Examples

Text

The CSS property to change the color of the text to CIELCh 64, 25.583, 41.506 is called "color". The color property can be set on classes, ids or directly on the HTML element.

This example shows how text in the color `rgb(198, 142, 126)` looks like.

```
.text, #text, p{  
    color:rgb(198, 142, 126)  
}
```

If you want to add a text shadow in that color use the text-shadow property, you can generate a text shadow directly with our [CSS Text Shadow Generator](#).

Here you see how black text with a 4 pixel rgb(198, 142, 126) colored shadow looks like.

```
.shadow{ text-shadow: 4px 4px 2px rgb(198, 142, 126) }
```

Border

The CSS property to change the border of an element to CIELCh 64, 25.583, 41.506 is called "border". The border property can be set on classes, ids or directly on the HTML element.

This example shows the color as border, it can be applied via the CSS property "border" or "border-color".

```
.border, #border, table{ border:4px solid rgb(198, 142, 126) }
```

If only the border color should be changed use the property `border-color`.

```
.border{ border-color:rgb(198, 142, 126) }
```

If you want to add a box shadow in that color use:

Here you see how a box with a 4 pixel `rgb(198, 142, 126)` colored shadow looks like.

```
.boxshadow{ -moz-box-shadow:4px 4px 4px  
4px rgb(198, 142, 126); -webkit-box-  
shadow:4px 4px 4px 4px rgb(198, 142, 126);  
box-shadow:4px 4px 4px 4px rgb(198, 142,  
126) }
```

Background

The CSS property to change the background color of an element to CIELCh 64, 25.583, 41.506 is called "background". The background property can be set on classes, ids or directly on the HTML element.

```
.background, #background, body{  
background: rgb(198, 142, 126) }
```

If only the background color should be changed can be used:

```
.background{ background-color: rgb(198,  
142, 126) }
```

This example shows the color as background, it is applied via the CSS property "background".

To optimize and compress your CSS code, you can use our [online CSS compressor and optimizer](#) based on csstidy. If you want to create a linear or radial gradient as background or border, check our [CSS Gradient Generator](#).

Hey! You found this booklet interesting? Support Converting Colors with the new Membership Option!

The pro membership hides all ads, plus gives you double the colors in the color bucket, and more awesome pro features!

[Learn more, Memberships starting at \\$2.50/m!](#)

**Follow me
on Twitter!**

@ConvertingColor