

Converting Colors

CIELCh(64, 26.978, 42.974)

Have a look what the booklet for
CIELCh(64, 26.978, 42.974) contains.

CIELCh(64, 26.979, 42.968)	3
<i>Conversions</i>	4
<i>Details</i>	6
<i>Harmonies</i>	11
<i>Previews</i>	20
<i>Color Blindness Simulation</i>	23
<i>CSS Examples</i>	26

Color

CIELCh(64, 26.979, 42.968)

Conversions

Conversions Part 1

Format	Color
Hex	C78D7B
RGB	199, 141, 123
RGB Percent	78%, 55%, 48%
CMY	0.2180, 0.4455, 0.5162
CMYK	0.00, 0.29, 0.38, 0.22
HSL	14°, 41%, 63%
HSV	14°, 38%, 78%
XYZ	36.8441, 32.8017, 23.2507
YIQ	156.2900, 40.3460, 6.6980

Conversions

Conversions Part 2

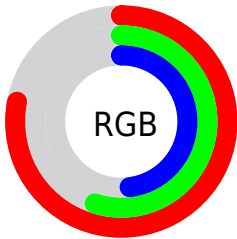
Format	Color
R _Y B	199, 147, 123
Decimal	13077883
CIE Lab	64.00, 19.74, 18.39
CIE LCh	64, 26.979, 42.968
Yxy	32.8017, 0.3966, 0.3531
Android (android.graphics.Color)	4291267963 (0xFFC78D7B)
YUV	156.2900, -16.4120, 37.4567
Hunter-Lab	57.2727, 14.6034, 16.0213

Details

The CIELCh color **64, 26.979, 42.968** is a light color, and the websafe version is hex **CC9999**. A complement of this color would be **71, 20.737, 226.715**, and the grayscale version is **65, 0.008, 296.813**.

A 20% lighter version of the original color is **84, 25.987, 43.366**, and **44, 27.054, 42.596** is the 20% darker color. If you saturate the color by 10%, you get **60, 35.458, 43.083**, and if you desaturate by 10%, it is **68, 19.102, 43.024**.

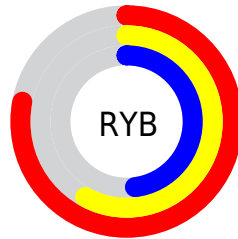
Distribution



Red (78%)

Green (55%)

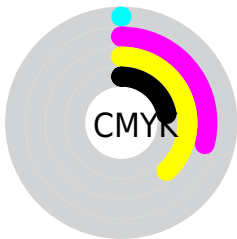
Blue (48%)



Red (78%)

Yellow (58%)

Blue (48%)

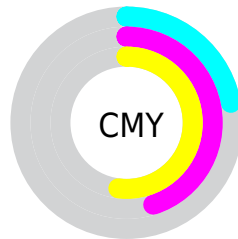


Cyan (0%)

Magenta (29%)

Yellow (38%)

Black (22%)



Cyan (22%)

Magenta (45%)

Yellow (52%)

Brightness & Saturation Gradients

These gradients show how the CIELCh color 64, 26.979, 42.968 changes by changing the brightness by 10 percent. The first figure shows a shift by +10% for each color and the second figure -10%.

Similar to the brightness gradients but the following saturation gradients show a change of the CIELCh color 64, 26.979, 42.968 by changing the saturation by 10% instead.

64, 26.979, 42.968

64, 26.979, 42.968

100, 26.979,
42.968

54, 26.979, 42.968

84, 26.979, 42.968

44, 26.979, 42.968

94, 26.979, 42.968

34, 26.979, 42.968

24, 26.979, 42.968

14, 26.979, 42.968

4, 26.979, 42.968

0, 26.979, 42.968

64, 26.979, 42.968

64, 26.979, 42.968

60, 35.458, 43.083

68, 19.102, 43.024

56, 44.507, 43.377

72, 11.819, 43.200

53, 53.999, 43.849

77, 5.092, 43.437

50, 63.626, 44.414

81, 1.128, 224.385

47, 72.680, 44.799

86, 6.893, 224.421

45, 79.965, 44.565

90, 12.256,
224.855

45, 81.267, 44.606

95, 16.239,
211.515

96, 18.279,
198.296

Harmonies

Complementary

The Complementary color scheme is a pair of colors which are on the opposite of each other on the color wheel.



64, 26.979, 42.968



71, 20.737, 226.715

Rectangle

The Rectangle color scheme consists of four colors that form a rectangle on the color wheel.



64, 26.979, 42.968



64, 26.979, 92.968



64, 26.979, 222.968



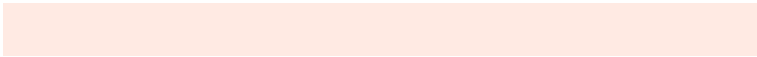
64, 26.979, 272.968

Sweetspot

The Sweet Spot groups the original color and five complimentary colors.



64, 26.978, 42.974



94, 8.511, 43.367



62, 42.322, 334.306



49, 5.750, 43.333



0, 0.000, 0.000



53, 0.007, 296.813

Same Dimension

The Same Dimension uses a secret algorithm to generate beautiful new colors.



64, 26.978, 42.974



76, 41.131, 43.056



74, 31.142, 91.351



40, 3.561, 43.409



36, 69.669, 45.015



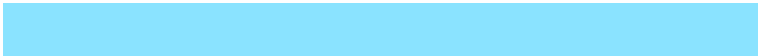
5, 13.918, 33.586

Inverse Universe

The Inverse Universe completely reimagines the original color for something new.



71, 20.737, 226.715



86, 29.442, 227.890



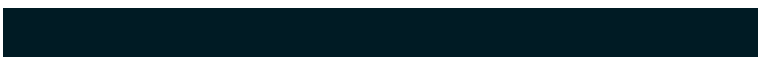
60, 31.864, 282.118



41, 3.367, 224.361



49, 32.256, 243.044



8, 11.125, 233.073

Previews

White Background



This preview shows how the CIELCh color 64, 26.979, 42.968 looks on a white background.

Color Contrast Check

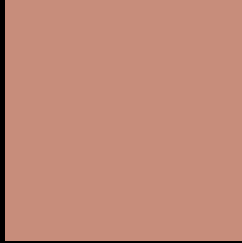
Large Text (above 18pt) WCAG AA × Fail

Any Text WCAG AA × Fail

Large Text (above 18pt) WCAG AAA × Fail

Any Text WCAG AAA × Fail

Black Background



This preview shows how the CIE LCh color 64, 26.979, 42.968 looks on a black background.

Color Contrast Check

Large Text (above 18pt) WCAG AA ✓ Pass

Any Text WCAG AA ✓ Pass

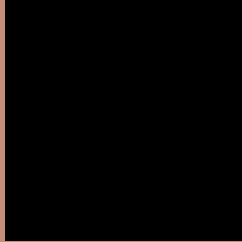
Large Text (above 18pt) WCAG AAA ✓ Pass

Any Text WCAG AAA ✓ Pass

If you want to check with other color combinations, try the [Color Contrast Checker](#).

CIELCh 64, 26.979, 42.968

Background



This preview shows how black text looks on a background with the CIELCh color 64, 26.979, 42.968.



This preview shows how white text looks on a background with the CIELCh color 64, 26.979, 42.968.

Color Blindness Simulation

Color vision deficiency is a very complex topic, and I could not describe the different causes any better than Wikipedia does, so if you want to learn more, you should check out their [article about color blindness](#).

Dichromacy





Tritanopia
64, 26.218, 10.147

Trichromacy



Original Color
64, 26.979, 42.968

Protanomaly
64, 16.723, 66.560

Deuteranomaly
64, 22.551, 56.450

Tritanomaly
64, 25.500, 22.001

Monochromacy



Original Color
64, 26.979, 42.968

Achromatopsia
65, 0.008, 296.813

Achromatomaly
64, 9.038, 41.617

CSS Examples

Text

The CSS property to change the color of the text to CIELCh 64, 26.979, 42.968 is called "color". The color property can be set on classes, ids or directly on the HTML element.

This example shows how text in the color `rgb(199, 141, 123)` looks like.

```
.text, #text, p{  
    color:rgb(199, 141, 123)  
}
```

If you want to add a text shadow in that color use the text-shadow property, you can generate a text shadow directly with our [CSS Text Shadow Generator](#).

Here you see how black text with a 4 pixel rgb(199, 141, 123) colored shadow looks like.

```
.shadow{ text-shadow: 4px 4px 2px rgb(199, 141, 123) }
```

Border

The CSS property to change the border of an element to CIELCh 64, 26.979, 42.968 is called "border". The border property can be set on classes, ids or directly on the HTML element.

This example shows the color as border, it can be applied via the CSS property "border" or "border-color".

```
.border, #border, table{ border:4px solid rgb(199, 141, 123) }
```

If only the border color should be changed use the property `border-color`.

```
.border{ border-color:rgb(199, 141, 123) }
```

If you want to add a box shadow in that color use:

Here you see how a box with a 4 pixel `rgb(199, 141, 123)` colored shadow looks like.

```
.boxshadow{ -moz-box-shadow:4px 4px 4px  
4px rgb(199, 141, 123); -webkit-box-  
shadow:4px 4px 4px 4px rgb(199, 141, 123);  
box-shadow:4px 4px 4px 4px rgb(199, 141,  
123) }
```

Background

The CSS property to change the background color of an element to CIELCh 64, 26.979, 42.968 is called "background". The background property can be set on classes, ids or directly on the HTML element.

```
.background, #background, body{  
background: rgb(199, 141, 123) }
```

If only the background color should be changed can be used:

```
.background{ background-color: rgb(199,  
141, 123) }
```

This example shows the color as background, it is applied via the CSS property "background".

To optimize and compress your CSS code, you can use our [online CSS compressor and optimizer](#) based on csstidy. If you want to create a linear or radial gradient as background or border, check our [CSS Gradient Generator](#).

Hey! You found this booklet interesting? Support Converting Colors with the new Membership Option!

The pro membership hides all ads, plus gives you double the colors in the color bucket, and more awesome pro features!

[Learn more, Memberships starting at \\$2.50/m!](#)

**Follow me
on Twitter!**

@ConvertingColor