

Converting Colors

CIELCh(64, 29.162, 44.528)

Have a look what the booklet for
CIELCh(64, 29.162, 44.528) contains.

CIELCh(64, 29.052, 44.880)	3
<i>Conversions</i>	4
<i>Details</i>	6
<i>Harmonies</i>	11
<i>Previews</i>	20
<i>Color Blindness Simulation</i>	23
<i>CSS Examples</i>	26

Color

CIELCh(64, 29.052, 44.880)

Conversions

Conversions Part 1

Format	Color
Hex	CA8D78
RGB	202, 141, 120
RGB Percent	79%, 55%, 47%
CMY	0.2093, 0.4484, 0.5307
CMYK	0.00, 0.30, 0.41, 0.21
HSL	15°, 43%, 63%
HSV	15°, 41%, 79%
XYZ	37.1007, 32.8017, 22.0405
YIQ	156.8450, 43.0970, 6.4010

Conversions

Conversions Part 2

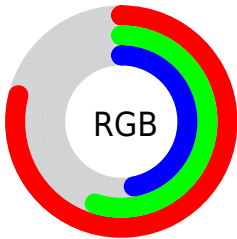
Format	Color
R _Y B	202, 148, 120
Decimal	13274488
CIE Lab	64.00, 20.59, 20.50
CIE LCh	64, 29.052, 44.880
Yxy	32.8017, 0.4035, 0.3568
Android (android.graphics.Color)	4291464568 (0xFFCA8D78)
YUV	156.8450, -18.1646, 39.6009
Hunter-Lab	57.2727, 15.4031, 17.2741

Details

The CIELCh color **64, 29.052, 44.880** is a light color, and the websafe version is hex **CC9999**. A complement of this color would be **70, 22.027, 229.816**, and the grayscale version is **65, 0.008, 296.813**.

A 20% lighter version of the original color is **84, 27.065, 47.189**, and **44, 29.346, 44.635** is the 20% darker color. If you saturate the color by 10%, you get **60, 37.668, 44.901**, and if you desaturate by 10%, it is **68, 21.032, 45.021**.

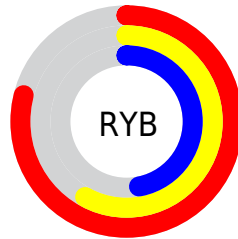
Distribution



Red (79%)

Green (55%)

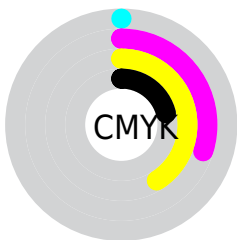
Blue (47%)



Red (79%)

Yellow (58%)

Blue (47%)

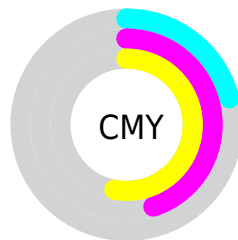


Cyan (0%)

Magenta (30%)

Yellow (41%)

Black (21%)



Cyan (21%)

Magenta (45%)

Yellow (53%)

Brightness & Saturation Gradients

These gradients show how the CIELCh color 64, 29.052, 44.880 changes by changing the brightness by 10 percent. The first figure shows a shift by +10% for each color and the second figure -10%.

Similar to the brightness gradients but the following saturation gradients show a change of the CIELCh color 64, 29.052, 44.880 by changing the saturation by 10% instead.

64, 29.052, 44.880

64, 29.052, 44.880

100, 29.052,
44.880

54, 29.052, 44.880

84, 29.052, 44.880

44, 29.052, 44.880

94, 29.052, 44.880

34, 29.052, 44.880

24, 29.052, 44.880

14, 29.052, 44.880

4, 29.052, 44.880

0, 29.052, 44.880

64, 29.052, 44.880

64, 29.052, 44.880

60, 37.668, 44.901

68, 21.032, 45.021

56, 46.834, 45.081

72, 13.607, 45.279

53, 56.391, 45.403

77, 6.743, 45.611

50, 65.954, 45.743

81, 0.391, 44.786

48, 74.661, 45.761

85, 5.500, 226.733

46, 81.206, 45.317

90, 10.982,
227.222

94, 15.144,
217.204

97, 17.604,
198.339

Harmonies

Complementary

The Complementary color scheme is a pair of colors which are on the opposite of each other on the color wheel.



64, 29.052, 44.880



70, 22.027, 229.816

Rectangle

The Rectangle color scheme consists of four colors that form a rectangle on the color wheel.



64, 29.052, 44.880



64, 29.052, 94.880



64, 29.052, 224.880



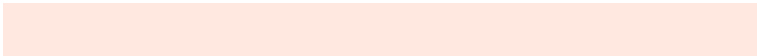
64, 29.052, 274.880

Sweetspot

The Sweet Spot groups the original color and five complimentary colors.



64, 29.051, 44.885



94, 9.251, 45.559



61, 44.888, 335.178



49, 6.169, 45.514



0, 0.000, 0.000



53, 0.007, 296.813

Same Dimension

The Same Dimension uses a secret algorithm to generate beautiful new colors.



64, 29.051, 44.885



75, 43.930, 44.892



74, 33.996, 92.221



41, 3.609, 45.652



37, 69.845, 45.737



6, 15.579, 34.197

Inverse Universe

The Inverse Universe completely reimagines the original color for something new.



70, 22.027, 229.816



84, 30.909, 231.296



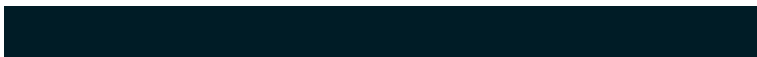
59, 35.125, 283.720



42, 3.418, 226.774



48, 33.294, 247.090



9, 11.821, 236.186

Previews

White Background



This preview shows how the CIELCh color 64, 29.052, 44.880 looks on a white background.

Color Contrast Check

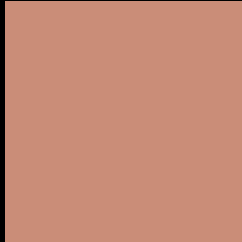
Large Text (above 18pt) WCAG AA × Fail

Any Text WCAG AA × Fail

Large Text (above 18pt) WCAG AAA × Fail

Any Text WCAG AAA × Fail

Black Background



This preview shows how the CIE LCh color 64, 29.052, 44.880 looks on a black background.

Color Contrast Check

Large Text (above 18pt) WCAG AA ✓ Pass

Any Text WCAG AA ✓ Pass

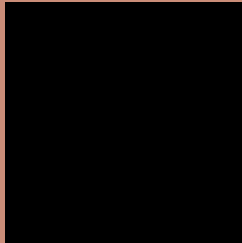
Large Text (above 18pt) WCAG AAA ✓ Pass

Any Text WCAG AAA ✓ Pass

If you want to check with other color combinations, try the [Color Contrast Checker](#).

CIELCh 64, 29.052, 44.880

Background



This preview shows how black text looks on a background with the CIELCh color 64, 29.052, 44.880.



This preview shows how white text looks on a background with the CIELCh color 64, 29.052, 44.880.

Color Blindness Simulation

Color vision deficiency is a very complex topic, and I could not describe the different causes any better than Wikipedia does, so if you want to learn more, you should check out their [article about color blindness](#).

Dichromacy



Original Color

64, 29.052, 44.880

Protanopia

64, 16.589, 93.979

Deuteranopia

64, 22.737, 68.640



Tritanopia
64, 27.453, 10.860

Trichromacy



Original Color
64, 29.052, 44.880

Protanomaly
64, 18.767, 69.749

Deuteranomaly
64, 24.391, 58.076

Tritanomaly
64, 26.887, 23.307

Monochromacy



Original Color
64, 29.052, 44.880

Achromatopsia
64, 0.008, 296.813

Achromatomaly
64, 10.045, 42.823

CSS Examples

Text

The CSS property to change the color of the text to CIELCh 64, 29.052, 44.880 is called "color". The color property can be set on classes, ids or directly on the HTML element.

This example shows how text in the color `rgb(202, 141, 120)` looks like.

```
.text, #text, p{  
    color:rgb(202, 141, 120)  
}
```

If you want to add a text shadow in that color use the text-shadow property, you can generate a text shadow directly with our [CSS Text Shadow Generator](#).

Here you see how black text with a 4 pixel rgb(202, 141, 120) colored shadow looks like.

```
.shadow{ text-shadow: 4px 4px 2px rgb(202, 141, 120) }
```

Border

The CSS property to change the border of an element to CIELCh 64, 29.052, 44.880 is called "border". The border property can be set on classes, ids or directly on the HTML element.

This example shows the color as border, it can be applied via the CSS property "border" or "border-color".

```
.border, #border, table{ border:4px solid rgb(202, 141, 120) }
```

If only the border color should be changed use the property `border-color`.

```
.border{ border-color:rgb(202, 141, 120) }
```

If you want to add a box shadow in that color use:

Here you see how a box with a 4 pixel `rgb(202, 141, 120)` colored shadow looks like.

```
.boxshadow{ -moz-box-shadow:4px 4px 4px  
4px rgb(202, 141, 120); -webkit-box-  
shadow:4px 4px 4px 4px rgb(202, 141, 120);  
box-shadow:4px 4px 4px 4px rgb(202, 141,  
120) }
```

Background

The CSS property to change the background color of an element to CIELCh 64, 29.052, 44.880 is called "background". The background property can be set on classes, ids or directly on the HTML element.

```
.background, #background, body{  
background: rgb(202, 141, 120) }
```

If only the background color should be changed can be used:

```
.background{ background-color: rgb(202,  
141, 120) }
```

This example shows the color as background, it is applied via the CSS property "background".

To optimize and compress your CSS code, you can use our [online CSS compressor and optimizer](#) based on csstidy. If you want to create a linear or radial gradient as background or border, check our [CSS Gradient Generator](#).

Hey! You found this booklet interesting? Support Converting Colors with the new Membership Option!

The pro membership hides all ads, plus gives you double the colors in the color bucket, and more awesome pro features!

[Learn more, Memberships starting at \\$2.50/m!](#)

**Follow me
on Twitter!**

@ConvertingColor