

Converting Colors

CIELCh(64, 42.982, 16.476)

Have a look what the booklet for
CIELCh(64, 42.982, 16.476) contains.

CIELCh(64, 42.982, 16.476)	3
<i>Conversions</i>	4
<i>Details</i>	6
<i>Harmonies</i>	11
<i>Previews</i>	20
<i>Color Blindness Simulation</i>	23
<i>CSS Examples</i>	26

Color

CIELCh(64, 42.982, 16.476)

Conversions

Conversions Part 1

Format	Color
Hex	E47C87
RGB	228, 124, 135
RGB Percent	89%, 49%, 53%
CMY	0.1045, 0.5125, 0.4694
CMYK	0.00, 0.46, 0.41, 0.10
HSL	354°, 66%, 69%
HSV	354°, 46%, 90%
XYZ	43.7463, 32.8017, 27.0582
YIQ	156.3500, 58.4530, 25.4690

Conversions

Conversions Part 2

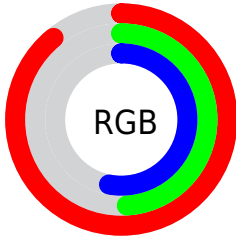
Format	Color
R _Y B	228, 124, 135
Decimal	14974087
CIE Lab	64.00, 41.22, 12.19
CIE LCh	64, 42.982, 16.476
Yxy	32.8017, 0.4222, 0.3166
Android (android.graphics.Color)	4293164167 (0xFFE47C87)
YUV	156.3500, -10.5255, 62.8371
Hunter-Lab	57.2727, 36.1152, 12.0797

Details

The CIELCh color **64, 42.982, 16.476** is a light color, and the websafe version is hex **CC6666**. A complement of this color would be **84, 33.116, 187.025**, and the grayscale version is **65, 0.008, 296.813**.

A 20% lighter version of the original color is **80, 30.036, 12.011**, and **44, 42.888, 16.827** is the 20% darker color. If you saturate the color by 10%, you get **59, 53.291, 18.788**, and if you desaturate by 10%, it is **69, 32.766, 14.665**.

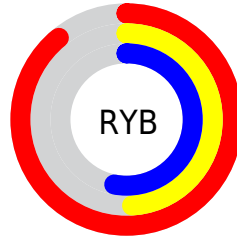
Distribution



Red (89%)

Green (49%)

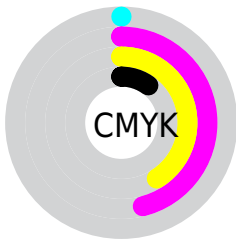
Blue (53%)



Red (89%)

Yellow (49%)

Blue (53%)

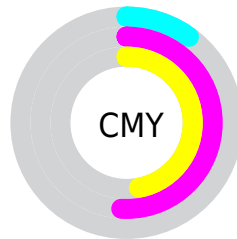


Cyan (0%)

Magenta (46%)

Yellow (41%)

Black (10%)



Cyan (10%)

Magenta (51%)

Yellow (47%)

Brightness & Saturation Gradients

These gradients show how the CIELCh color 64, 42.982, 16.476 changes by changing the brightness by 10 percent. The first figure shows a shift by +10% for each color and the second figure -10%.

Similar to the brightness gradients but the following saturation gradients show a change of the CIELCh color 64, 42.982, 16.476 by changing the saturation by 10% instead.

64, 42.982, 16.476

64, 42.982, 16.476

100, 42.982,
16.476

54, 42.982, 16.476

84, 42.982, 16.476

44, 42.982, 16.476

94, 42.982, 16.476

34, 42.982, 16.476

24, 42.982, 16.476

14, 42.982, 16.476

4, 42.982, 16.476

0, 42.982, 16.476

64, 42.982, 16.476

64, 42.982, 16.476

59, 53.291, 18.788

69, 32.766, 14.665

■ 55, 63.372, 21.727

■ 75, 22.894, 13.223

■ 52, 72.863, 25.399

■ 81, 13.508, 12.052

■ 49, 81.455, 29.756

■ 87, 4.672, 11.026

■ 48, 88.785, 34.385

■ 94, 3.605, 190.531

■ 48, 91.585, 36.177

■ 98, 9.069, 198.905

Harmonies

Complementary

The Complementary color scheme is a pair of colors which are on the opposite of each other on the color wheel.



64, 42.982, 16.476



84, 33.116, 187.025

Rectangle

The Rectangle color scheme consists of four colors that form a rectangle on the color wheel.



64, 42.982, 16.476



64, 42.982, 66.476



64, 42.982, 196.476



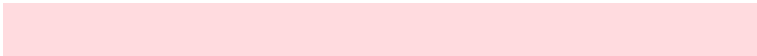
64, 42.982, 246.476

Sweetspot

The Sweet Spot groups the original color and five complimentary colors.



64, 42.979, 16.479



91, 13.230, 11.896



66, 63.894, 323.338



47, 9.198, 12.127



0, 0.000, 0.000



53, 0.007, 296.813

Same Dimension

The Same Dimension uses a secret algorithm to generate beautiful new colors.



64, 42.979, 16.479



66, 57.680, 18.730



73, 35.553, 57.689



45, 4.854, 11.425



37, 75.522, 35.437



6, 26.808, 17.382

Inverse Universe

The Inverse Universe completely reimagines the original color for something new.



64, 42.979, 16.479



66, 57.680, 18.730



74, 28.128, 249.146



45, 4.854, 11.425



37, 75.522, 35.437



6, 26.808, 17.382

Previews

White Background



This preview shows how the CIELCh color 64, 42.982, 16.476 looks on a white background.

Color Contrast Check

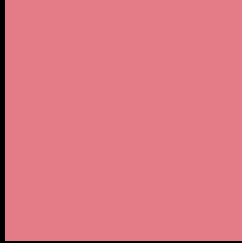
Large Text (above 18pt) WCAG AA × Fail

Any Text WCAG AA × Fail

Large Text (above 18pt) WCAG AAA × Fail

Any Text WCAG AAA × Fail

Black Background



This preview shows how the CIELCh color 64, 42.982, 16.476 looks on a black background.

Color Contrast Check

Large Text (above 18pt) WCAG AA ✓ Pass

Any Text WCAG AA ✓ Pass

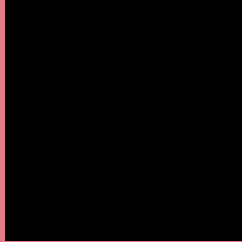
Large Text (above 18pt) WCAG AAA ✓ Pass

Any Text WCAG AAA ✓ Pass

If you want to check with other color combinations, try the [Color Contrast Checker](#).

CIELCh 64, 42.982, 16.476

Background



This preview shows how black text looks on a background with the CIELCh color 64, 42.982, 16.476.

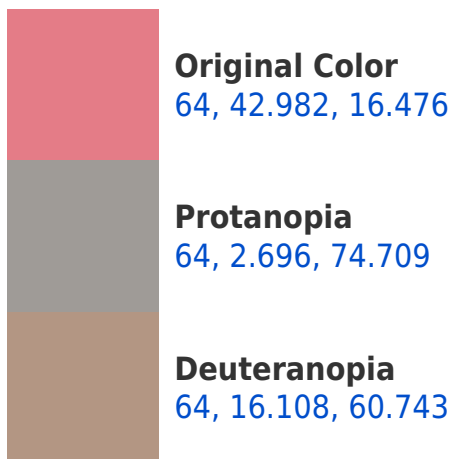


This preview shows how white text looks on a background with the CIELCh color 64, 42.982, 16.476.

Color Blindness Simulation

Color vision deficiency is a very complex topic, and I could not describe the different causes any better than Wikipedia does, so if you want to learn more, you should check out their [article about color blindness](#).

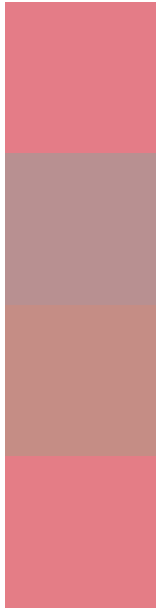
Dichromacy





Tritanopia
64, 42.632, 17.775

Trichromacy



Original Color
64, 42.982, 16.476

Protanomaly
63, 16.115, 19.027

Deuteranomaly
64, 23.878, 32.199

Tritanomaly
64, 42.632, 17.775

Monochromacy



Original Color
64, 42.982, 16.476

Achromatopsia
65, 0.008, 296.813

Achromatomaly
64, 15.295, 12.625

CSS Examples

Text

The CSS property to change the color of the text to CIELCh 64, 42.982, 16.476 is called "color". The color property can be set on classes, ids or directly on the HTML element.

This example shows how text in the color `rgb(228, 124, 135)` looks like.

```
.text, #text, p{  
    color:rgb(228, 124, 135)  
}
```

If you want to add a text shadow in that color use the text-shadow property, you can generate a text shadow directly with our [CSS Text Shadow Generator](#).

Here you see how black text with a 4 pixel rgb(228, 124, 135) colored shadow looks like.

```
.shadow{ text-shadow: 4px 4px 2px rgb(228, 124, 135) }
```

Border

The CSS property to change the border of an element to CIELCh 64, 42.982, 16.476 is called "border". The border property can be set on classes, ids or directly on the HTML element.

This example shows the color as border, it can be applied via the CSS property "border" or "border-color".

```
.border, #border, table{ border:4px solid rgb(228, 124, 135) }
```

If only the border color should be changed use the property `border-color`.

```
.border{ border-color:rgb(228, 124, 135) }
```

If you want to add a box shadow in that color use:

Here you see how a box with a 4 pixel `rgb(228, 124, 135)` colored shadow looks like.

```
.boxshadow{ -moz-box-shadow:4px 4px 4px  
4px rgb(228, 124, 135); -webkit-box-  
shadow:4px 4px 4px 4px rgb(228, 124, 135);  
box-shadow:4px 4px 4px 4px rgb(228, 124,  
135) }
```

Background

The CSS property to change the background color of an element to CIELCh 64, 42.982, 16.476 is called "background". The background property can be set on classes, ids or directly on the HTML element.

```
.background, #background, body{  
background: rgb(228, 124, 135) }
```

If only the background color should be changed can be used:

```
.background{ background-color: rgb(228,  
124, 135) }
```

This example shows the color as background, it is applied via the CSS property "background".

To optimize and compress your CSS code, you can use our [online CSS compressor and optimizer](#) based on csstidy. If you want to create a linear or radial gradient as background or border, check our [CSS Gradient Generator](#).

Hey! You found this booklet interesting? Support Converting Colors with the new Membership Option!

The pro membership hides all ads, plus gives you double the colors in the color bucket, and more awesome pro features!

[Learn more, Memberships starting at \\$2.50/m!](#)

**Follow me
on Twitter!**

@ConvertingColor