

Converting Colors

CIELCh(64, 45.948, 14.817)

Have a look what the booklet for
CIELCh(64, 45.948, 14.817) contains.

CIELCh(64, 46.177, 14.873)	3
<i>Conversions</i>	4
<i>Details</i>	6
<i>Harmonies</i>	11
<i>Previews</i>	20
<i>Color Blindness Simulation</i>	23
<i>CSS Examples</i>	26

Color

CIELCh(64, 46.177, 14.873)

Conversions

Conversions Part 1

Format	Color
Hex	E97988
RGB	233, 121, 136
RGB Percent	91%, 47%, 53%
CMY	0.0860, 0.5252, 0.4665
CMYK	0.00, 0.48, 0.42, 0.09
HSL	352°, 72%, 69%
HSV	352°, 48%, 91%
XYZ	44.9168, 32.8017, 27.2767
YIQ	156.1980, 61.9370, 28.4090

Conversions

Conversions Part 2

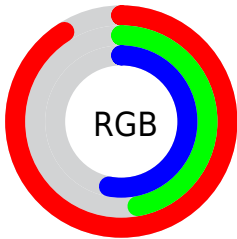
Format	Color
R _Y B	233, 121, 136
Decimal	15301000
CIE Lab	64.00, 44.63, 11.85
CIE LCh	64, 46.177, 14.873
Yxy	32.8017, 0.4278, 0.3124
Android (android.graphics.Color)	4293491080 (0xFFE97988)
YUV	156.1980, -9.9576, 67.3554
Hunter-Lab	57.2727, 39.7633, 11.8534

Details

The CIELCh color **64, 46.177, 14.873** is a light color, and the websafe version is hex **CC6666**. A complement of this color would be **86, 35.729, 184.201**, and the grayscale version is **64, 0.008, 296.813**.

A 20% lighter version of the original color is **80, 30.984, 9.472**, and **44, 46.427, 15.088** is the 20% darker color. If you saturate the color by 10%, you get **59, 56.422, 17.347**, and if you desaturate by 10%, it is **69, 35.869, 12.929**.

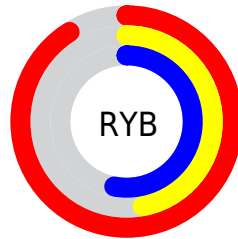
Distribution



Red (91%)

Green (47%)

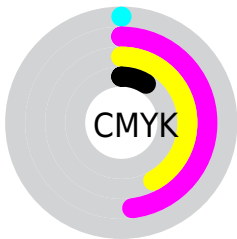
Blue (53%)



Red (91%)

Yellow (47%)

Blue (53%)

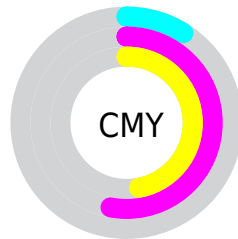


Cyan (0%)

Magenta (48%)

Yellow (42%)

Black (9%)



Cyan (9%)

Magenta (53%)

Yellow (47%)


Brightness & Saturation Gradients

These gradients show how the CIELCh color 64, 46.177, 14.873 changes by changing the brightness by 10 percent. The first figure shows a shift by +10% for each color and the second figure -10%.

Similar to the brightness gradients but the following saturation gradients show a change of the CIELCh color 64, 46.177, 14.873 by changing the saturation by 10% instead.

 64, 46.177, 14.873

 64, 46.177, 14.873

 100, 46.177,
14.873

 54, 46.177, 14.873

 84, 46.177, 14.873

 44, 46.177, 14.873

 94, 46.177, 14.873

 34, 46.177, 14.873

 24, 46.177, 14.873

 14, 46.177, 14.873

 4, 46.177, 14.873

 0, 46.177, 14.873

 64, 46.177, 14.873

 64, 46.177, 14.873

 59, 56.422, 17.347

 69, 35.869, 12.929

■ 55, 66.253, 20.486

■ 75, 25.794, 11.378

■ 52, 75.314, 24.395

■ 81, 16.133, 10.116

■ 50, 83.360, 29.015

■ 87, 6.982, 9.041

■ 49, 90.214, 33.875

■ 94, 1.628, 188.631

■ 49, 91.450, 34.708

■ 98, 7.500, 199.019

Harmonies

Complementary

The Complementary color scheme is a pair of colors which are on the opposite of each other on the color wheel.



64, 46.177, 14.873



86, 35.729, 184.201

Rectangle

The Rectangle color scheme consists of four colors that form a rectangle on the color wheel.



64, 46.177, 14.873



64, 46.177, 64.873



64, 46.177, 194.873



64, 46.177, 244.873

Sweetspot

The Sweet Spot groups the original color and five complimentary colors.



64, 46.174, 14.876



91, 13.296, 9.673



65, 67.897, 322.412



47, 9.239, 9.910



0, 0.000, 0.000



53, 0.007, 296.813

Same Dimension

The Same Dimension uses a secret algorithm to generate beautiful new colors.



64, 46.174, 14.876



64, 60.643, 17.411



72, 38.635, 54.090



46, 4.972, 9.188



38, 75.012, 33.878



7, 28.054, 17.221

Inverse Universe

The Inverse Universe completely reimagines the original color for something new.



64, 46.174, 14.876



64, 60.643, 17.411



75, 29.253, 245.064



46, 4.972, 9.188



38, 75.012, 33.878



7, 28.054, 17.221

Previews

White Background



This preview shows how the CIELCh color 64, 46.177, 14.873 looks on a white background.

Color Contrast Check

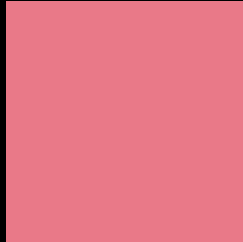
Large Text (above 18pt) WCAG AA × Fail

Any Text WCAG AA × Fail

Large Text (above 18pt) WCAG AAA × Fail

Any Text WCAG AAA × Fail

Black Background



This preview shows how the CIELCh color 64, 46.177, 14.873 looks on a black background.

Color Contrast Check

Large Text (above 18pt) WCAG AA ✓ Pass

Any Text WCAG AA ✓ Pass

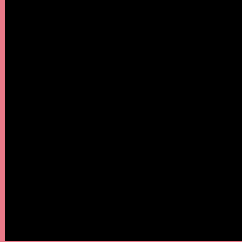
Large Text (above 18pt) WCAG AAA ✓ Pass

Any Text WCAG AAA ✓ Pass

If you want to check with other color combinations, try the [Color Contrast Checker](#).

CIELCh 64, 46.177, 14.873

Background



This preview shows how black text looks on a background with the CIELCh color 64, 46.177, 14.873.

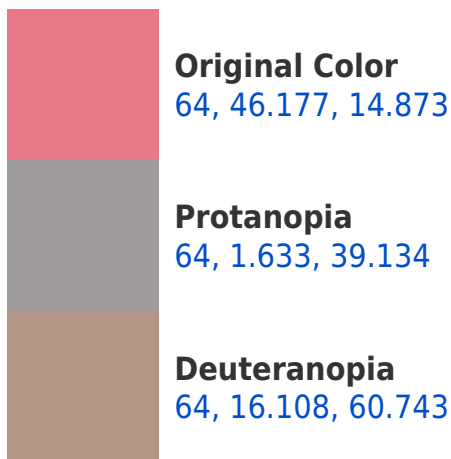


This preview shows how white text looks on a background with the CIELCh color 64, 46.177, 14.873.

Color Blindness Simulation

Color vision deficiency is a very complex topic, and I could not describe the different causes any better than Wikipedia does, so if you want to learn more, you should check out their [article about color blindness](#).

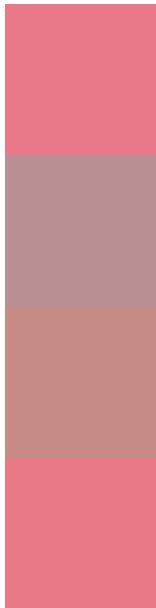
Dichromacy





Tritanopia
64, 46.058, 18.768

Trichromacy



Original Color
64, 46.177, 14.873

Protanomaly
64, 17.367, 13.859

Deuteranomaly
64, 25.325, 29.308

Tritanomaly
64, 45.919, 17.415

Monochromacy



Original Color
64, 46.177, 14.873

Achromatopsia
64, 0.008, 296.813

Achromatomaly
63, 16.652, 9.614

CSS Examples

Text

The CSS property to change the color of the text to CIELCh 64, 46.177, 14.873 is called "color". The color property can be set on classes, ids or directly on the HTML element.

This example shows how text in the color `rgb(233, 121, 136)` looks like.

```
.text, #text, p{  
    color:rgb(233, 121, 136)  
}
```

If you want to add a text shadow in that color use the text-shadow property, you can generate a text shadow directly with our [CSS Text Shadow Generator](#).

Here you see how black text with a 4 pixel rgb(233, 121, 136) colored shadow looks like.

```
.shadow{ text-shadow: 4px 4px 2px rgb(233, 121, 136) }
```

Border

The CSS property to change the border of an element to CIELCh 64, 46.177, 14.873 is called "border". The border property can be set on classes, ids or directly on the HTML element.

This example shows the color as border, it can be applied via the CSS property "border" or "border-color".

```
.border, #border, table{ border:4px solid rgb(233, 121, 136) }
```

If only the border color should be changed use the property `border-color`.

```
.border{ border-color:rgb(233, 121, 136) }
```

If you want to add a box shadow in that color use:

Here you see how a box with a 4 pixel `rgb(233, 121, 136)` colored shadow looks like.

```
.boxshadow{ -moz-box-shadow:4px 4px 4px  
4px rgb(233, 121, 136); -webkit-box-  
shadow:4px 4px 4px 4px rgb(233, 121, 136);  
box-shadow:4px 4px 4px 4px rgb(233, 121,  
136) }
```

Background

The CSS property to change the background color of an element to CIELCh 64, 46.177, 14.873 is called "background". The background property can be set on classes, ids or directly on the HTML element.

```
.background, #background, body{  
background: rgb(233, 121, 136) }
```

If only the background color should be changed can be used:

```
.background{ background-color: rgb(233,  
121, 136) }
```

This example shows the color as background, it is applied via the CSS property "background".

To optimize and compress your CSS code, you can use our [online CSS compressor and optimizer](#) based on csstidy. If you want to create a linear or radial gradient as background or border, check our [CSS Gradient Generator](#).

Hey! You found this booklet interesting? Support Converting Colors with the new Membership Option!

The pro membership hides all ads, plus gives you double the colors in the color bucket, and more awesome pro features!

[Learn more, Memberships starting at \\$2.50/m!](#)

**Follow me
on Twitter!**

@ConvertingColor