

Converting Colors

CIELCh(64, 54.436, 13.064)

Have a look what the booklet for
CIELCh(64, 54.436, 13.064) contains.

CIELCh(64, 54.494, 12.829)	3
<i>Conversions</i>	4
<i>Details</i>	6
<i>Harmonies</i>	11
<i>Previews</i>	20
<i>Color Blindness Simulation</i>	23
<i>CSS Examples</i>	26

Color

CIELCh(64, 54.494, 12.829)

Conversions

Conversions Part 1

Format	Color
Hex	F57088
RGB	245, 112, 136
RGB Percent	96%, 44%, 53%
CMY	0.0390, 0.5605, 0.4665
CMYK	0.00, 0.54, 0.44, 0.04
HSL	349°, 87%, 70%
HSV	349°, 54%, 96%
XYZ	47.9237, 32.8017, 27.1165
YIQ	154.5030, 71.5640, 35.6600

Conversions

Conversions Part 2

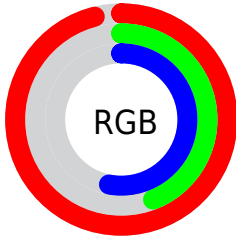
Format	Color
RYB	245, 112, 136
Decimal	16085128
CIELab	64.00, 53.13, 12.10
CIElCh	64, 54.494, 12.829
Yxy	32.8017, 0.4444, 0.3042
Android (android.graphics.Color)	4294275208 (0xFFFF57088)
YUV	154.5030, -9.1220, 79.3659
Hunter-Lab	57.2727, 49.1350, 12.0193

Details

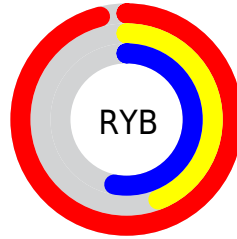
The CIELCh color **64, 54.494, 12.829** is a light color, and the websafe version is hex **FF6699**. A complement of this color would be **89, 42.244, 179.379**, and the grayscale version is **64, 0.008, 296.813**.

A 20% lighter version of the original color is **78, 35.331, 3.613**, and **44, 54.277, 13.119** is the 20% darker color. If you saturate the color by 10%, you get **60, 64.515, 15.701**, and if you desaturate by 10%, it is **69, 44.023, 10.571**.

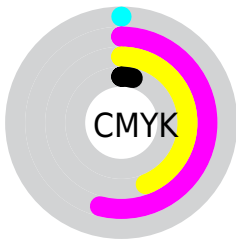
Distribution



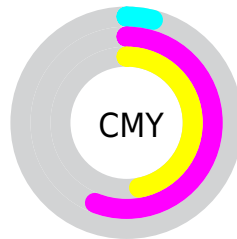
- Red (96%)
- Green (44%)
- Blue (53%)



- Red (96%)
- Yellow (44%)
- Blue (53%)



- Cyan (0%)
- Magenta (54%)
- Yellow (44%)
- Black (4%)



- Cyan (4%)
- Magenta (56%)
- Yellow (47%)

Brightness & Saturation Gradients

These gradients show how the CIELCh color 64, 54.494, 12.829 changes by changing the brightness by 10 percent. The first figure shows a shift by +10% for each color and the second figure -10%.

Similar to the brightness gradients but the following saturation gradients show a change of the CIELCh color 64, 54.494, 12.829 by changing the saturation by 10% instead.

64, 54.494, 12.829

64, 54.494, 12.829

100, 54.494,
12.829

54, 54.494, 12.829

84, 54.494, 12.829

44, 54.494, 12.829

94, 54.494, 12.829

34, 54.494, 12.829

24, 54.494, 12.829

14, 54.494, 12.829

4, 54.494, 12.829

0, 54.494, 12.829

64, 54.494, 12.829

64, 54.494, 12.829

60, 64.515, 15.701

69, 44.023, 10.571

■ 56, 73.696, 19.329

■ 75, 33.494, 8.771

■ 53, 81.756, 23.794

■ 81, 23.188, 7.313

■ 52, 88.652, 28.944

■ 87, 13.283, 6.099

■ 51, 92.233, 31.895

■ 94, 3.868, 4.987

■ 99, 3.437, 199.380

Harmonies

Complementary

The Complementary color scheme is a pair of colors which are on the opposite of each other on the color wheel.



64, 54.494, 12.829



89, 42.244, 179.379

Rectangle

The Rectangle color scheme consists of four colors that form a rectangle on the color wheel.



64, 54.494, 12.829



64, 54.494, 62.829



64, 54.494, 192.829



64, 54.494, 242.829

Sweetspot

The Sweet Spot groups the original color and five complimentary colors.



64, 54.491, 12.831



89, 15.453, 6.299



65, 78.672, 321.588



46, 10.490, 6.540



0, 0.000, 0.000



53, 0.007, 296.813

Same Dimension

The Same Dimension uses a secret algorithm to generate beautiful new colors.



64, 54.491, 12.831



61, 67.347, 15.983



72, 46.911, 50.528



48, 5.216, 5.575



39, 74.337, 30.918



9, 30.076, 17.604

Inverse Universe

The Inverse Universe completely reimagines the original color for something new.



64, 54.491, 12.831



61, 67.347, 15.983



78, 32.977, 241.709



48, 5.216, 5.575



39, 74.337, 30.918



9, 30.076, 17.604

Previews

White Background



This preview shows how the CIELCh color 64, 54.494, 12.829 looks on a white background.

Color Contrast Check

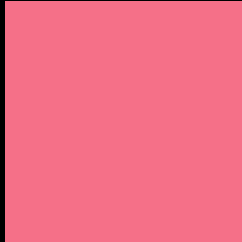
Large Text (above 18pt) WCAG AA × Fail

Any Text WCAG AA × Fail

Large Text (above 18pt) WCAG AAA × Fail

Any Text WCAG AAA × Fail

Black Background



This preview shows how the CIELCh color 64, 54.494, 12.829 looks on a black background.

Color Contrast Check

Large Text (above 18pt) WCAG AA ✓ Pass

Any Text WCAG AA ✓ Pass

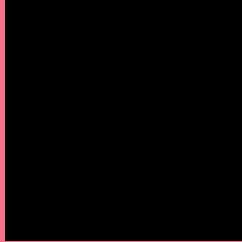
Large Text (above 18pt) WCAG AAA ✓ Pass

Any Text WCAG AAA ✓ Pass

If you want to check with other color combinations, try the [Color Contrast Checker](#).

CIELCh 64, 54.494, 12.829

Background



This preview shows how black text looks on a background with the CIELCh color 64, 54.494, 12.829.

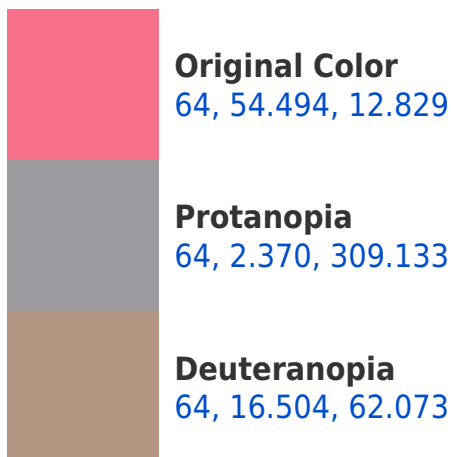


This preview shows how white text looks on a background with the CIELCh color 64, 54.494, 12.829.

Color Blindness Simulation

Color vision deficiency is a very complex topic, and I could not describe the different causes any better than Wikipedia does, so if you want to learn more, you should check out their [article about color blindness](#).

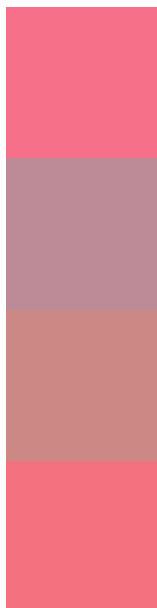
Dichromacy





Tritanopia
64, 54.351, 21.532

Trichromacy



Original Color
64, 54.494, 12.829

Protanomaly
63, 20.868, 3.089

Deuteranomaly
63, 28.147, 26.698

Tritanomaly
64, 54.209, 18.266

Monochromacy



Original Color
64, 54.494, 12.829

Achromatopsia
64, 0.008, 296.813

Achromatomaly
63, 20.158, 7.246

CSS Examples

Text

The CSS property to change the color of the text to CIELCh 64, 54.494, 12.829 is called "color". The color property can be set on classes, ids or directly on the HTML element.

This example shows how text in the color `rgb(245, 112, 136)` looks like.

```
.text, #text, p{  
    color:rgb(245, 112, 136)  
}
```

If you want to add a text shadow in that color use the text-shadow property, you can generate a text shadow directly with our [CSS Text Shadow Generator](#).

Here you see how black text with a 4 pixel rgb(245, 112, 136) colored shadow looks like.

```
.shadow{ text-shadow: 4px 4px 2px rgb(245, 112, 136) }
```

Border

The CSS property to change the border of an element to CIELCh 64, 54.494, 12.829 is called "border". The border property can be set on classes, ids or directly on the HTML element.

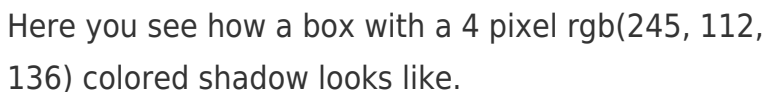
This example shows the color as border, it can be applied via the CSS property "border" or "border-color".

```
.border, #border, table{ border:4px solid rgb(245, 112, 136) }
```

If only the border color should be changed use the property `border-color`.

```
.border{ border-color:rgb(245, 112, 136) }
```

If you want to add a box shadow in that color use:



Here you see how a box with a 4 pixel `rgb(245, 112, 136)` colored shadow looks like.

```
.boxshadow{ -moz-box-shadow:4px 4px 4px 4px rgb(245, 112, 136); -webkit-box-shadow:4px 4px 4px 4px rgb(245, 112, 136); box-shadow:4px 4px 4px 4px rgb(245, 112, 136) }
```

Background

The CSS property to change the background color of an element to CIELCh 64, 54.494, 12.829 is called "background". The background property can be set on classes, ids or directly on the HTML element.

```
.background, #background, body{  
background: rgb(245, 112, 136) }
```

If only the background color should be changed can be used:

```
.background{ background-color: rgb(245,  
112, 136) }
```

This example shows the color as background, it is applied via the CSS property "background".

To optimize and compress your CSS code, you can use our [online CSS compressor and optimizer](#) based on csstidy. If you want to create a linear or radial gradient as background or border, check our [CSS Gradient Generator](#).

Hey! You found this booklet interesting? Support Converting Colors with the new Membership Option!

The pro membership hides all ads, plus gives you double the colors in the color bucket, and more awesome pro features!

[Learn more, Memberships starting at \\$2.50/m!](#)

**Follow me
on Twitter!**

@ConvertingColor