

Converting Colors

CIELCh(64, 57.391, 0.593)

Have a look what the booklet for
CIELCh(64, 57.391, 0.593) contains.

CIELCh(64, 57.391, 0.593)	3
<i>Conversions</i>	4
<i>Details</i>	6
<i>Harmonies</i>	11
<i>Previews</i>	20
<i>Color Blindness Simulation</i>	23
<i>CSS Examples</i>	26

Color

CIELCh(64, 57.391, 0.593)

Conversions

Conversions Part 1

Format	Color
Hex	F66C9C
RGB	246, 108, 156
RGB Percent	96%, 42%, 61%
CMY	0.0345, 0.5757, 0.3875
CMYK	0.00, 0.56, 0.37, 0.03
HSL	339°, 89%, 69%
HSV	339°, 56%, 97%
XYZ	49.4772, 32.8017, 35.2560
YIQ	154.7340, 66.8400, 44.1840

Conversions

Conversions Part 2

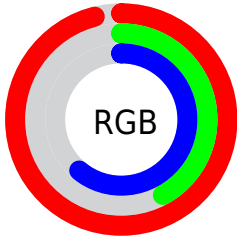
Format	Color
RYB	246, 108, 156
Decimal	16149660
CIELab	64.00, 57.39, 0.59
CIELCh	64, 57.391, 0.593
Yxy	32.8017, 0.4210, 0.2791
Android (android.graphics.Color)	4294339740 (0xFFFF66C9C)
YUV	154.7340, 0.6241, 80.0403
Hunter-Lab	57.2727, 53.9765, 3.5931

Details

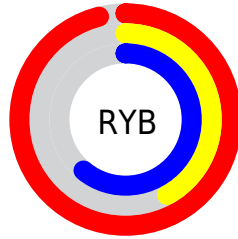
The CIELCh color $64, 57.391, 0.593$ is a light color, and the websafe version is hex FF6699 . A complement of this color would be $89, 50.164, 166.332$, and the grayscale version is $64, 0.008, 296.813$.

A 20% lighter version of the original color is $78, 40.906, 346.826$, and $44, 57.411, 0.657$ is the 20% darker color. If you saturate the color by 10%, you get $60, 66.212, 3.162$, and if you desaturate by 10%, it is $69, 47.527, 358.547$.

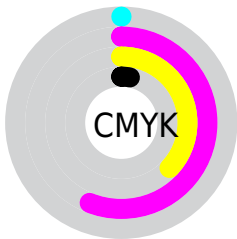
Distribution



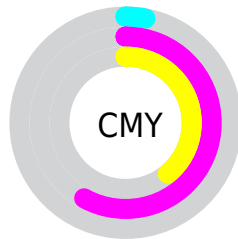
- Red (96%)
- Green (42%)
- Blue (61%)



- Red (96%)
- Yellow (42%)
- Blue (61%)



- Cyan (0%)
- Magenta (56%)
- Yellow (37%)
- Black (3%)



- Cyan (3%)
- Magenta (58%)
- Yellow (39%)

Brightness & Saturation Gradients

These gradients show how the CIELCh color 64, 57.391, 0.593 changes by changing the brightness by 10 percent. The first figure shows a shift by +10% for each color and the second figure -10%.

Similar to the brightness gradients but the following saturation gradients show a change of the CIELCh color 64, 57.391, 0.593 by changing the saturation by 10% instead.

 64, 57.391, 0.593  64, 57.391, 0.593

 100, 57.391, 0.593  54, 57.391, 0.593

 84, 57.391, 0.593  44, 57.391, 0.593

 94, 57.391, 0.593  34, 57.391, 0.593

 24, 57.391, 0.593

 14, 57.391, 0.593

 4, 57.391, 0.593

 0, 57.391, 0.593

 64, 57.391, 0.593  64, 57.391, 0.593

 60, 66.212, 3.162  69, 47.527,

56, 73.508, 6.423

358.547

54, 78.978, 10.555

75, 37.123,
356.878

53, 82.756, 15.646

80, 26.566,
355.486

52, 84.075, 17.795

87, 16.129,
354.292

93, 5.976, 353.212

99, 3.314, 177.266

99, 3.043, 199.430

Harmonies

Complementary

The Complementary color scheme is a pair of colors which are on the opposite of each other on the color wheel.



64, 57.391, 0.593



89, 50.164, 166.332

Rectangle

The Rectangle color scheme consists of four colors that form a rectangle on the color wheel.



64, 57.391, 0.593



64, 57.391, 50.593



64, 57.391, 180.593



64, 57.391, 230.593

Sweetspot

The Sweet Spot groups the original color and five complimentary colors.



64, 57.387, 0.595



89, 17.600, 354.402



61, 80.036, 316.475



46, 11.810, 354.632



0, 0.000, 0.000



53, 0.007, 296.813

Same Dimension

The Same Dimension uses a secret algorithm to generate beautiful new colors.



64, 57.387, 0.595



61, 68.880, 3.475



67, 53.323, 36.358



48, 5.618, 353.581



39, 67.876, 16.726



9, 29.616, 7.985

Inverse Universe

The Inverse Universe completely reimagines the original color for something new.



64, 57.387, 0.595



61, 68.880, 3.475



84, 34.017, 216.314



48, 5.618, 353.581



39, 67.876, 16.726



9, 29.616, 7.985

Previews

White Background



This preview shows how the CIELCh color 64, 57.391, 0.593 looks on a white background.

Color Contrast Check

Large Text (above 18pt) WCAG AA × Fail

Any Text WCAG AA × Fail

Large Text (above 18pt) WCAG AAA × Fail

Any Text WCAG AAA × Fail

Black Background



This preview shows how the CIE LCh color 64, 57.391, 0.593 looks on a black background.

Color Contrast Check

Large Text (above 18pt) WCAG AA ✓ Pass

Any Text WCAG AA ✓ Pass

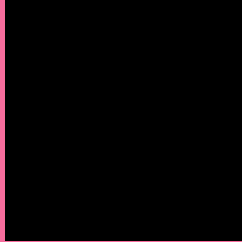
Large Text (above 18pt) WCAG AAA ✓ Pass

Any Text WCAG AAA ✓ Pass

If you want to check with other color combinations, try the [Color Contrast Checker](#).

CIELCh 64, 57.391, 0.593

Background



This preview shows how black text looks on a background with the CIELCh color 64, 57.391, 0.593.

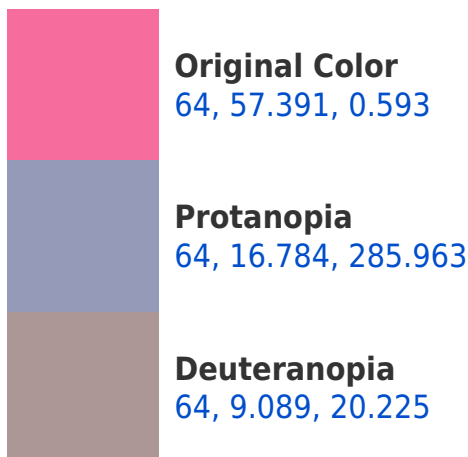


This preview shows how white text looks on a background with the CIELCh color 64, 57.391, 0.593.

Color Blindness Simulation

Color vision deficiency is a very complex topic, and I could not describe the different causes any better than Wikipedia does, so if you want to learn more, you should check out their [article about color blindness](#).

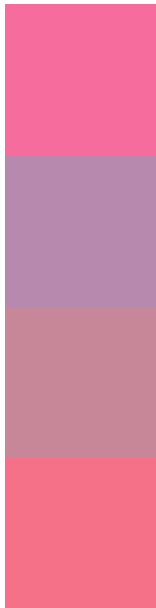
Dichromacy





Tritanopia
64, 53.883, 21.397

Trichromacy



Original Color
64, 57.391, 0.593

Protanomaly
63, 27.083, 332.607

Deuteranomaly
63, 27.306, 2.384

Tritanomaly
64, 54.126, 13.781

Monochromacy



Original Color
64, 57.391, 0.593

Achromatopsia
64, 0.008, 296.813

Achromatomaly
63, 21.709, 356.019

CSS Examples

Text

The CSS property to change the color of the text to CIELCh 64, 57.391, 0.593 is called "color". The color property can be set on classes, ids or directly on the HTML element.

This example shows how text in the color `rgb(246, 108, 156)` looks like.

```
.text, #text, p{  
    color:rgb(246, 108, 156)  
}
```

If you want to add a text shadow in that color use the text-shadow property, you can generate a text shadow directly with our [CSS Text Shadow Generator](#).

Here you see how black text with a 4 pixel rgb(246, 108, 156) colored shadow looks like.

```
.shadow{ text-shadow: 4px 4px 2px rgb(246, 108, 156) }
```

Border

The CSS property to change the border of an element to CIELCh 64, 57.391, 0.593 is called "border". The border property can be set on classes, ids or directly on the HTML element.

This example shows the color as border, it can be applied via the CSS property "border" or "border-color".

```
.border, #border, table{ border:4px solid rgb(246, 108, 156) }
```

If only the border color should be changed use the property `border-color`.

```
.border{ border-color:rgb(246, 108, 156) }
```

If you want to add a box shadow in that color use:

Here you see how a box with a 4 pixel `rgb(246, 108, 156)` colored shadow looks like.

```
.boxshadow{ -moz-box-shadow:4px 4px 4px  
4px rgb(246, 108, 156); -webkit-box-  
shadow:4px 4px 4px 4px rgb(246, 108, 156);  
box-shadow:4px 4px 4px 4px rgb(246, 108,  
156) }
```

Background

The CSS property to change the background color of an element to CIELCh 64, 57.391, 0.593 is called "background". The background property can be set on classes, ids or directly on the HTML element.

```
.background, #background, body{  
background: rgb(246, 108, 156) }
```

If only the background color should be changed can be used:

```
.background{ background-color: rgb(246,  
108, 156) }
```

This example shows the color as background, it is applied via the CSS property "background".

To optimize and compress your CSS code, you can use our [online CSS compressor and optimizer](#) based on csstidy. If you want to create a linear or radial gradient as background or border, check our [CSS Gradient Generator](#).

Hey! You found this booklet interesting? Support Converting Colors with the new Membership Option!

The pro membership hides all ads, plus gives you double the colors in the color bucket, and more awesome pro features!

[Learn more, Memberships starting at \\$2.50/m!](#)

**Follow me
on Twitter!**

@ConvertingColor