

Converting Colors

CIELCh(64, 58.233, 16.285)

Have a look what the booklet for
CIELCh(64, 58.233, 16.285) contains.

CIELCh(64, 58.250, 15.996)	3
<i>Conversions</i>	4
<i>Details</i>	6
<i>Harmonies</i>	11
<i>Previews</i>	20
<i>Color Blindness Simulation</i>	23
<i>CSS Examples</i>	26

Color

CIELCh(64, 58.250, 15.996)

Conversions

Conversions Part 1

Format	Color
Hex	FA6C81
RGB	250, 108, 129
RGB Percent	98%, 42%, 51%
CMY	0.0179, 0.5750, 0.4928
CMYK	0.00, 0.57, 0.48, 0.02
HSL	351°, 94%, 70%
HSV	351°, 57%, 98%
XYZ	48.9648, 32.8017, 24.6410
YIQ	152.8520, 77.8910, 36.6350

Conversions

Conversions Part 2

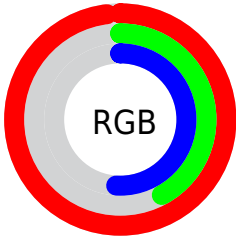
Format	Color
R _Y B	250, 108, 129
Decimal	16411777
CIE Lab	64.00, 55.99, 16.05
CIE LCh	64, 58.250, 15.996
Yxy	32.8017, 0.4602, 0.3083
Android (android.graphics.Color)	4294601857 (0xFFFA6C81)
YUV	152.8520, -11.7590, 85.1988
Hunter-Lab	57.2727, 52.3795, 14.5821

Details

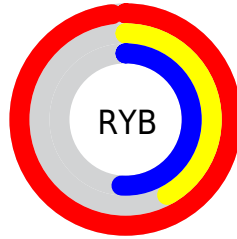
The CIELCh color **64, 58.250, 15.996** is a light color, and the websafe version is hex **FF6666**. A complement of this color would be **91, 43.320, 182.026**, and the grayscale version is **63, 0.008, 296.813**.

A 20% lighter version of the original color is **77, 36.213, 7.698**, and **44, 58.449, 16.031** is the 20% darker color. If you saturate the color by 10%, you get **60, 68.592, 19.069**, and if you desaturate by 10%, it is **69, 47.455, 13.584**.

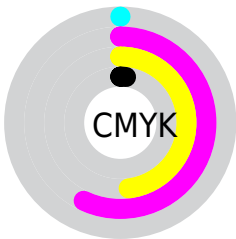
Distribution



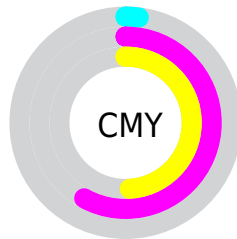
- Red (98%)
- Green (42%)
- Blue (51%)



- Red (98%)
- Yellow (42%)
- Blue (51%)



- Cyan (0%)
- Magenta (57%)
- Yellow (48%)
- Black (2%)



- Cyan (2%)
- Magenta (58%)
- Yellow (49%)


Brightness & Saturation Gradients

These gradients show how the CIELCh color 64, 58.250, 15.996 changes by changing the brightness by 10 percent. The first figure shows a shift by +10% for each color and the second figure -10%.

Similar to the brightness gradients but the following saturation gradients show a change of the CIELCh color 64, 58.250, 15.996 by changing the saturation by 10% instead.

 64, 58.250, 15.996

 64, 58.250, 15.996

 100, 58.250,
15.996

 54, 58.250, 15.996

 84, 58.250, 15.996

 44, 58.250, 15.996

 94, 58.250, 15.996

 34, 58.250, 15.996

 24, 58.250, 15.996

 14, 58.250, 15.996

 4, 58.250, 15.996

 0, 58.250, 15.996

 64, 58.250, 15.996

 64, 58.250, 15.996

 60, 68.592, 19.069

 69, 47.455, 13.584

■ 56, 78.107, 22.919

■ 75, 36.604, 11.678

■ 54, 86.536, 27.536

■ 81, 25.995, 10.153

■ 53, 93.741, 32.573

■ 87, 15.818, 8.904

■ 52, 95.908, 34.094

■ 94, 6.171, 7.823

■ 100, 1.589,
199.722

Harmonies

Complementary

The Complementary color scheme is a pair of colors which are on the opposite of each other on the color wheel.



64, 58.250, 15.996



91, 43.320, 182.026

Rectangle

The Rectangle color scheme consists of four colors that form a rectangle on the color wheel.



64, 58.250, 15.996



64, 58.250, 65.996



64, 58.250, 195.996



64, 58.250, 245.996

Sweetspot

The Sweet Spot groups the original color and five complimentary colors.



64, 58.247, 15.998



89, 16.335, 8.938



65, 83.560, 322.695



46, 10.990, 9.173



0, 0.000, 0.000



53, 0.007, 296.813

Same Dimension

The Same Dimension uses a secret algorithm to generate beautiful new colors.



64, 58.247, 15.998



60, 70.894, 19.540



74, 49.854, 53.589



49, 5.255, 8.118



39, 76.789, 33.182



9, 31.252, 20.098

Inverse Universe

The Inverse Universe completely reimagines the original color for something new.



64, 58.247, 15.998



60, 70.894, 19.540



77, 35.511, 247.437



49, 5.255, 8.118



39, 76.789, 33.182



9, 31.252, 20.098

Previews

White Background



This preview shows how the CIELCh color 64, 58.250, 15.996 looks on a white background.

Color Contrast Check

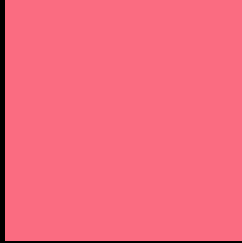
Large Text (above 18pt) WCAG AA × Fail

Any Text WCAG AA × Fail

Large Text (above 18pt) WCAG AAA × Fail

Any Text WCAG AAA × Fail

Black Background



This preview shows how the CIELCh color 64, 58.250, 15.996 looks on a black background.

Color Contrast Check

Large Text (above 18pt) WCAG AA ✓ Pass

Any Text WCAG AA ✓ Pass

Large Text (above 18pt) WCAG AAA ✓ Pass

Any Text WCAG AAA ✓ Pass

If you want to check with other color combinations, try the [Color Contrast Checker](#).

CIELCh 64, 58.250, 15.996

Background



This preview shows how black text looks on a background with the CIELCh color 64, 58.250, 15.996.

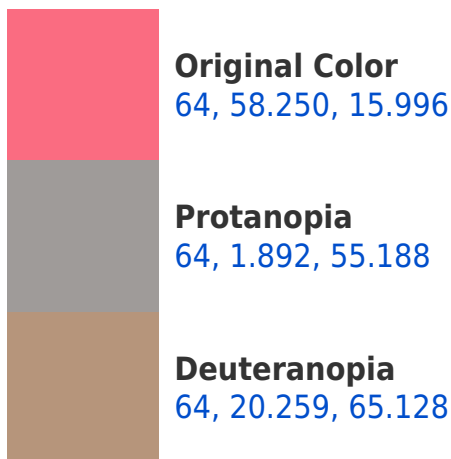


This preview shows how white text looks on a background with the CIELCh color 64, 58.250, 15.996.

Color Blindness Simulation

Color vision deficiency is a very complex topic, and I could not describe the different causes any better than Wikipedia does, so if you want to learn more, you should check out their [article about color blindness](#).

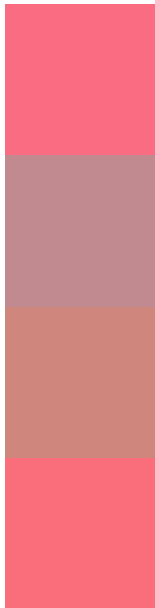
Dichromacy





Tritanopia
64, 58.639, 22.556

Trichromacy



Original Color
64, 58.250, 15.996

Protanomaly
63, 22.036, 13.096

Deuteranomaly
63, 31.579, 31.443

Tritanomaly
64, 58.495, 20.084

Monochromacy



Original Color
64, 58.250, 15.996

Achromatopsia
63, 0.008, 296.813

Achromatomaly
62, 20.879, 10.939

CSS Examples

Text

The CSS property to change the color of the text to CIELCh 64, 58.250, 15.996 is called "color". The color property can be set on classes, ids or directly on the HTML element.

This example shows how text in the color `rgb(250, 108, 129)` looks like.

```
.text, #text, p{  
    color:rgb(250, 108, 129)  
}
```

If you want to add a text shadow in that color use the text-shadow property, you can generate a text shadow directly with our [CSS Text Shadow Generator](#).

Here you see how black text with a 4 pixel rgb(250, 108, 129) colored shadow looks like.

```
.shadow{ text-shadow: 4px 4px 2px rgb(250, 108, 129) }
```

Border

The CSS property to change the border of an element to CIELCh 64, 58.250, 15.996 is called "border". The border property can be set on classes, ids or directly on the HTML element.

This example shows the color as border, it can be applied via the CSS property "border" or "border-color".

```
.border, #border, table{ border:4px solid rgb(250, 108, 129) }
```

If only the border color should be changed use the property `border-color`.

```
.border{ border-color:rgb(250, 108, 129) }
```

If you want to add a box shadow in that color use:

Here you see how a box with a 4 pixel `rgb(250, 108, 129)` colored shadow looks like.

```
.boxshadow{ -moz-box-shadow:4px 4px 4px 4px rgb(250, 108, 129); -webkit-box-shadow:4px 4px 4px 4px rgb(250, 108, 129); box-shadow:4px 4px 4px 4px rgb(250, 108, 129) }
```

Background

The CSS property to change the background color of an element to CIELCh 64, 58.250, 15.996 is called "background". The background property can be set on classes, ids or directly on the HTML element.

```
.background, #background, body{  
background: rgb(250, 108, 129) }
```

If only the background color should be changed can be used:

```
.background{ background-color: rgb(250,  
108, 129) }
```

This example shows the color as background, it is applied via the CSS property "background".

To optimize and compress your CSS code, you can use our [online CSS compressor and optimizer](#) based on csstidy. If you want to create a linear or radial gradient as background or border, check our [CSS Gradient Generator](#).

Hey! You found this booklet interesting? Support Converting Colors with the new Membership Option!

The pro membership hides all ads, plus gives you double the colors in the color bucket, and more awesome pro features!

[Learn more, Memberships starting at \\$2.50/m!](#)

**Follow me
on Twitter!**

@ConvertingColor