

Converting Colors

CIELCh(64, 63.247, 359.276)

Have a look what the booklet for
CIELCh(64, 63.247, 359.276)
contains.

CIELCh(64, 63.272, 359.287)	3
<i>Conversions</i>	4
<i>Details</i>	6
<i>Harmonies</i>	11
<i>Previews</i>	20
<i>Color Blindness Simulation</i>	23
<i>CSS Examples</i>	26

Color

CIELCh(64, 63.272, 359.287)

Conversions

Conversions Part 1

Format	Color
Hex	FE659F
RGB	254, 101, 159
RGB Percent	100%, 40%, 62%
CMY	0.0047, 0.6046, 0.3771
CMYK	0.00, 0.60, 0.37, 0.00
HSL	337°, 98%, 70%
HSV	337°, 60%, 100%
XYZ	51.6787, 32.8017, 36.3306
YIQ	153.3590, 72.5700, 50.4740

Conversions

Conversions Part 2

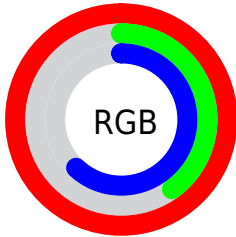
Format	Color
R _Y B	254, 101, 159
Decimal	16672159
CIE Lab	64.00, 63.27, -0.79
CIE LCh	64, 63.272, 359.287
Yxy	32.8017, 0.4278, 0.2715
Android (android.graphics.Color)	4294862239 (0xFFFE659F)
YUV	153.3590, 2.7810, 88.2622
Hunter-Lab	57.2727, 60.8378, 2.4807

Details

The CIELCh color **64, 63.272, 359.287** is a light color, and the websafe version is hex **FF6699**. A complement of this color would be **91, 56.119, 163.617**, and the grayscale version is **63, 0.008, 296.813**.

A 20% lighter version of the original color is **76, 45.488, 343.118**, and **44, 63.344, 359.137** is the 20% darker color. If you saturate the color by 10%, you get **60, 71.532, 1.995**, and if you desaturate by 10%, it is **69, 53.619, 357.138**.

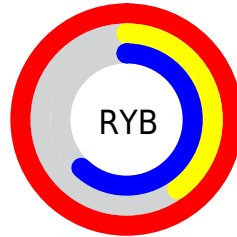
Distribution



Red (100%)

Green (40%)

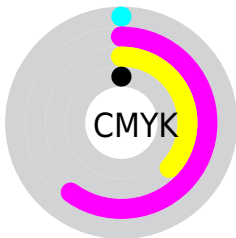
Blue (62%)



Red (100%)

Yellow (40%)

Blue (62%)

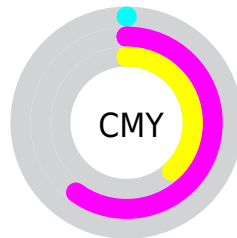


Cyan (0%)

Magenta (60%)

Yellow (37%)

Black (0%)



Cyan (0%)

Magenta (60%)

Yellow (38%)


Brightness & Saturation Gradients


These gradients show how the CIELCh color 64, 63.272, 359.287 changes by changing the brightness by 10 percent. The first figure shows a shift by +10% for each color and the second figure -10%.

Similar to the brightness gradients but the following saturation gradients show a change of the CIELCh color 64, 63.272, 359.287 by changing the saturation by 10% instead.

 64, 63.272,
359.287

 64, 63.272,
359.287

 100, 63.272,
359.287

 54, 63.272,
359.287


 84, 63.272,
359.287

 44, 63.272,
359.287

 94, 63.272,
359.287

 34, 63.272,
359.287

 24, 63.272,
359.287

 14, 63.272,
359.287

 4, 63.272, 359.287

 0, 63.272, 359.287

64, 63.272,
359.287

64, 63.272,
359.287

60, 71.532, 1.995

69, 53.619,
357.138

57, 77.937, 5.440

74, 43.126,
355.394

55, 82.319, 9.793

54, 85.149, 14.851

80, 32.258,
353.945

86, 21.362,
352.711

93, 10.662,
351.623

99, 0.287, 348.862

100, 0.417,
200.969

Harmonies

Complementary

The Complementary color scheme is a pair of colors which are on the opposite of each other on the color wheel.



64, 63.272, 359.287



91, 56.119, 163.617

Rectangle

The Rectangle color scheme consists of four colors that form a rectangle on the color wheel.



64, 63.272, 359.287



64, 63.272, 49.287



64, 63.272, 179.287



64, 63.272, 229.287

Sweetspot

The Sweet Spot groups the original color and five complimentary colors.



64, 63.268, 359.288



88, 18.978, 352.453



60, 87.582, 315.582



45, 13.241, 352.784



0, 0.000, 0.000



53, 0.007, 296.813

Same Dimension

The Same Dimension uses a secret algorithm to generate beautiful new colors.



64, 63.268, 359.288



60, 73.053, 2.538



66, 60.943, 34.600



50, 5.915, 351.543



41, 68.633, 13.827



10, 31.282, 6.566

Inverse Universe

The Inverse Universe completely reimagines the original color for something new.



64, 63.268, 359.288



60, 73.053, 2.538



87, 37.257, 211.878



50, 5.915, 351.543



41, 68.633, 13.827



10, 31.282, 6.566

Previews

White Background



This preview shows how the CIELCh color 64, 63.272, 359.287 looks on a white background.

Color Contrast Check

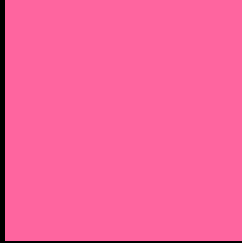
Large Text (above 18pt) WCAG AA × Fail

Any Text WCAG AA × Fail

Large Text (above 18pt) WCAG AAA × Fail

Any Text WCAG AAA × Fail

Black Background



This preview shows how the CIELCh color 64, 63.272, 359.287 looks on a black background.

Color Contrast Check

Large Text (above 18pt) WCAG AA ✓ Pass

Any Text WCAG AA ✓ Pass

Large Text (above 18pt) WCAG AAA ✓ Pass

Any Text WCAG AAA ✓ Pass

If you want to check with other color combinations, try the [Color Contrast Checker](#).

CIELCh 64, 63.272, 359.287

Background



This preview shows how black text looks on a background with the CIELCh color 64, 63.272, 359.287.



This preview shows how white text looks on a background with the CIELCh color 64, 63.272, 359.287.

Color Blindness Simulation

Color vision deficiency is a very complex topic, and I could not describe the different causes any better than Wikipedia does, so if you want to learn more, you should check out their [article about color blindness](#).

Dichromacy



Original Color

64, 63.272, 359.287

Protanopia

64, 21.258, 285.963

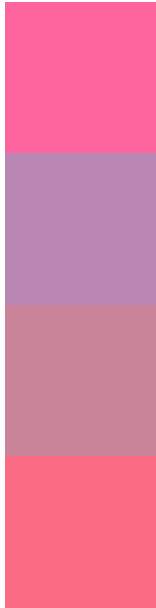
Deuteranopia

64, 8.682, 16.538



Tritanopia
64, 59.177, 23.149

Trichromacy



Original Color
64, 63.272, 359.287

Protanomaly
63, 31.317, 329.415

Deuteranomaly
63, 29.951, 358.928

Tritanomaly
64, 59.212, 14.330

Monochromacy



Original Color
64, 63.272, 359.287

Achromatopsia
63, 0.008, 296.813

Achromatomaly
62, 24.746, 354.048

CSS Examples

Text

The CSS property to change the color of the text to CIELCh 64, 63.272, 359.287 is called "color". The color property can be set on classes, ids or directly on the HTML element.

This example shows how text in the color `rgb(254, 101, 159)` looks like.

```
.text, #text, p{  
    color:rgb(254, 101, 159)  
}
```

If you want to add a text shadow in that color use the text-shadow property, you can generate a text shadow directly with our [CSS Text Shadow Generator](#).

Here you see how black text with a 4 pixel rgb(254, 101, 159) colored shadow looks like.

```
.shadow{ text-shadow: 4px 4px 2px rgb(254, 101, 159) }
```

Border

The CSS property to change the border of an element to CIELCh 64, 63.272, 359.287 is called "border". The border property can be set on classes, ids or directly on the HTML element.

This example shows the color as border, it can be applied via the CSS property "border" or "border-color".

```
.border, #border, table{ border:4px solid rgb(254, 101, 159) }
```

If only the border color should be changed use the property `border-color`.

```
.border{ border-color:rgb(254, 101, 159) }
```

If you want to add a box shadow in that color use:

Here you see how a box with a 4 pixel `rgb(254, 101, 159)` colored shadow looks like.

```
.boxshadow{ -moz-box-shadow:4px 4px 4px  
4px rgb(254, 101, 159); -webkit-box-  
shadow:4px 4px 4px 4px rgb(254, 101, 159);  
box-shadow:4px 4px 4px 4px rgb(254, 101,  
159) }
```

Background

The CSS property to change the background color of an element to CIELCh 64, 63.272, 359.287 is called "background". The background property can be set on classes, ids or directly on the HTML element.

```
.background, #background, body{  
background: rgb(254, 101, 159) }
```

If only the background color should be changed can be used:

```
.background{ background-color: rgb(254,  
101, 159) }
```

This example shows the color as background, it is applied via the CSS property "background".

To optimize and compress your CSS code, you can use our [online CSS compressor and optimizer](#) based on csstidy. If you want to create a linear or radial gradient as background or border, check our [CSS Gradient Generator](#).

Hey! You found this booklet interesting? Support Converting Colors with the new Membership Option!

The pro membership hides all ads, plus gives you double the colors in the color bucket, and more awesome pro features!

[Learn more, Memberships starting at \\$2.50/m!](#)

**Follow me
on Twitter!**

@ConvertingColor