

Converting Colors

CIELCh(64, 9.673, 7.073)

Have a look what the booklet for
CIELCh(64, 9.673, 7.073) contains.

CIELCh(64, 9.673, 7.073)	3
<i>Conversions</i>	4
<i>Details</i>	6
<i>Harmonies</i>	11
<i>Previews</i>	20
<i>Color Blindness Simulation</i>	23
<i>CSS Examples</i>	26

Color

CIELCh(64, 9.673, 7.073)

Conversions

Conversions Part 1

Format	Color
Hex	AD9599
RGB	173, 149, 153
RGB Percent	68%, 58%, 60%
CMY	0.3205, 0.4146, 0.3990
CMYK	0.00, 0.14, 0.12, 0.32
HSL	350°, 13%, 63%
HSV	350°, 14%, 68%
XYZ	33.8539, 32.8017, 34.7982
YIQ	156.6320, 13.0200, 6.3320

Conversions

Conversions Part 2

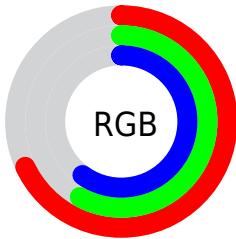
Format	Color
R_{YB}	173, 149, 153
Decimal	11376025
CIE _{Lab}	64.00, 9.60, 1.19
CIE _{LCh}	64, 9.673, 7.073
Yxy	32.8017, 0.3337, 0.3233
Android (android.graphics.Color)	4289566105 (0xFFAD9599)
YUV	156.6320, -1.7906, 14.3547
Hunter-Lab	57.2727, 5.2840, 4.0671

Details

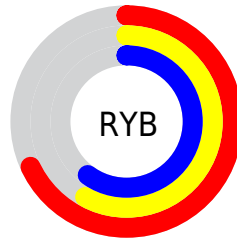
The CIELCh color $64, 9.673, 7.073$ is a light color, and the websafe version is hex 999999 . A complement of this color would be $69, 9.111, 184.703$, and the grayscale version is $65, 0.008, 296.813$.

A 20% lighter version of the original color is $84, 9.847, 7.821$, and $44, 9.616, 6.343$ is the 20% darker color. If you saturate the color by 10%, you get $59, 17.103, 8.245$, and if you desaturate by 10%, it is $69, 2.617, 5.991$.

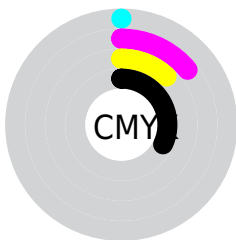
Distribution



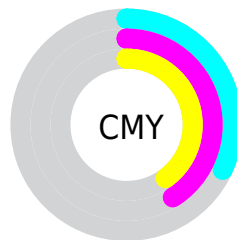
- Red (68%)
- Green (58%)
- Blue (60%)



- Red (68%)
- Yellow (58%)
- Blue (60%)



- Cyan (0%)
- Magenta (14%)
- Yellow (12%)
- Black (32%)



- Cyan (32%)
- Magenta (41%)
- Yellow (40%)

Brightness & Saturation Gradients

These gradients show how the CIELCh color 64, 9.673, 7.073 changes by changing the brightness by 10 percent. The first figure shows a shift by +10% for each color and the second figure -10%.

Similar to the brightness gradients but the following saturation gradients show a change of the CIELCh color 64, 9.673, 7.073 by changing the saturation by 10% instead.

64, 9.673, 7.073

64, 9.673, 7.073

100, 9.673, 7.073

54, 9.673, 7.073

84, 9.673, 7.073

44, 9.673, 7.073

94, 9.673, 7.073

34, 9.673, 7.073

24, 9.673, 7.073

14, 9.673, 7.073

4, 9.673, 7.073

0, 9.673, 7.073

64, 9.673, 7.073

64, 9.673, 7.073

59, 17.103, 8.245

69, 2.617, 5.991

■ 55, 24.857, 9.638

■ 74, 4.045, 185.465

■ 50, 32.815, 11.350

■ 79, 10.324,
184.685

■ 46, 40.789, 13.490

■ 84, 16.245,
184.045

■ 43, 48.515, 16.194

■ 40, 55.706, 19.600

■ 89, 21.837,
183.485

■ 38, 62.133, 23.791

■ 94, 27.133,
182.986

■ 37, 67.710, 28.662

■ 36, 70.933, 31.585

■ 95, 25.909,
197.077

■ 95, 25.863,
197.823

Harmonies

Complementary

The Complementary color scheme is a pair of colors which are on the opposite of each other on the color wheel.



64, 9.673, 7.073



69, 9.111, 184.703

Rectangle

The Rectangle color scheme consists of four colors that form a rectangle on the color wheel.



64, 9.673, 7.073



64, 9.673, 57.073



64, 9.673, 187.073



64, 9.673, 237.073

Sweetspot

The Sweet Spot groups the original color and five complimentary colors.



64, 9.671, 7.081



87, 3.354, 6.020



64, 15.383, 320.407



46, 2.385, 6.111



95, 0.011, 296.813



47, 0.006, 296.813

Same Dimension

The Same Dimension uses a secret algorithm to generate beautiful new colors.



64, 9.671, 7.081



79, 14.784, 7.461



66, 7.728, 54.577



34, 3.905, 6.600



31, 63.535, 30.933



2, 7.973, 8.258

Inverse Universe

The Inverse Universe completely reimagines the original color for something new.



64, 9.671, 7.081



79, 14.784, 7.461



67, 7.205, 237.031



34, 3.905, 6.600



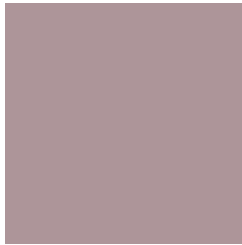
31, 63.535, 30.933



2, 7.973, 8.258

Previews

White Background



This preview shows how the CIELCh color 64, 9.673, 7.073 looks on a white background.

Color Contrast Check

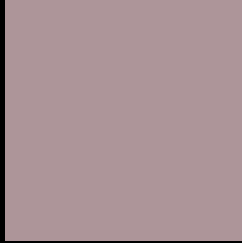
Large Text (above 18pt) WCAG AA × Fail

Any Text WCAG AA × Fail

Large Text (above 18pt) WCAG AAA × Fail

Any Text WCAG AAA × Fail

Black Background



This preview shows how the CIE LCh color 64, 9.673, 7.073 looks on a black background.

Color Contrast Check

Large Text (above 18pt) WCAG AA ✓ Pass

Any Text WCAG AA ✓ Pass

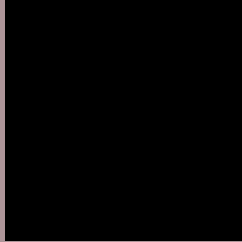
Large Text (above 18pt) WCAG AAA ✓ Pass

Any Text WCAG AAA ✓ Pass

If you want to check with other color combinations, try the [Color Contrast Checker](#).

CIELCh 64, 9.673, 7.073

Background



This preview shows how black text looks on a background with the CIELCh color 64, 9.673, 7.073.



This preview shows how white text looks on a background with the CIELCh color 64, 9.673, 7.073.

Color Blindness Simulation

Color vision deficiency is a very complex topic, and I could not describe the different causes any better than Wikipedia does, so if you want to learn more, you should check out their [article about color blindness](#).

Dichromacy



Original Color


64, 9.673, 7.073

Protanopia

64, 1.911, 343.674

Deuteranopia

64, 8.394, 8.751



Tritanopia
64, 12.068, 347.058

Trichromacy



Original Color

64, 9.673, 7.073

Protanomaly

64, 4.949, 0.106

Deuteranomaly

64, 8.784, 9.313

Tritanomaly

64, 11.524, 351.733

Monochromacy



Original Color

64, 9.673, 7.073

Achromatopsia

65, 0.008, 296.813

Achromatomaly

64, 3.657, 1.952

CSS Examples

Text

The CSS property to change the color of the text to CIELCh 64, 9.673, 7.073 is called "color". The color property can be set on classes, ids or directly on the HTML element.

This example shows how text in the color `rgb(173, 149, 153)` looks like.

```
.text, #text, p{  
    color:rgb(173, 149, 153)  
}
```

If you want to add a text shadow in that color use the text-shadow property, you can generate a text shadow directly with our [CSS Text Shadow Generator](#).

Here you see how black text with a 4 pixel rgb(173, 149, 153) colored shadow looks like.

```
.shadow{ text-shadow: 4px 4px 2px rgb(173, 149, 153) }
```

Border

The CSS property to change the border of an element to CIELCh 64, 9.673, 7.073 is called "border". The border property can be set on classes, ids or directly on the HTML element.

This example shows the color as border, it can be applied via the CSS property "border" or "border-color".

```
.border, #border, table{ border:4px solid rgb(173, 149, 153) }
```

If only the border color should be changed use the property `border-color`.

```
.border{ border-color:rgb(173, 149, 153) }
```

If you want to add a box shadow in that color use:

Here you see how a box with a 4 pixel `rgb(173, 149, 153)` colored shadow looks like.

```
.boxshadow{ -moz-box-shadow:4px 4px 4px  
4px rgb(173, 149, 153); -webkit-box-  
shadow:4px 4px 4px 4px rgb(173, 149, 153);  
box-shadow:4px 4px 4px 4px rgb(173, 149,  
153) }
```

Background

The CSS property to change the background color of an element to CIELCh 64, 9.673, 7.073 is called "background". The background property can be set on classes, ids or directly on the HTML element.

```
.background, #background, body{  
background: rgb(173, 149, 153) }
```

If only the background color should be changed can be used:

```
.background{ background-color: rgb(173,  
149, 153) }
```

This example shows the color as background, it is applied via the CSS property "background".

To optimize and compress your CSS code, you can use our [online CSS compressor and optimizer](#) based on csstidy. If you want to create a linear or radial gradient as background or border, check our [CSS Gradient Generator](#).

Hey! You found this booklet interesting? Support Converting Colors with the new Membership Option!

The pro membership hides all ads, plus gives you double the colors in the color bucket, and more awesome pro features!

[Learn more, Memberships starting at \\$2.50/m!](#)

**Follow me
on Twitter!**

@ConvertingColor