

Converting Colors

CIELCh(65, 10.110, 7.732)

Have a look what the booklet for
CIELCh(65, 10.110, 7.732) contains.

CIELCh(65, 10.024, 7.618)	3
<i>Conversions</i>	4
<i>Details</i>	6
<i>Harmonies</i>	11
<i>Previews</i>	20
<i>Color Blindness Simulation</i>	23
<i>CSS Examples</i>	26

Color

CIELCh(65, 10.024, 7.618)

Conversions

Conversions Part 1

Format	Color
Hex	B1989C
RGB	177, 152, 156
RGB Percent	69%, 60%, 61%
CMY	0.3072, 0.4052, 0.3895
CMYK	0.00, 0.14, 0.12, 0.31
HSL	350°, 14%, 64%
HSV	350°, 14%, 69%
XYZ	35.2029, 34.0472, 36.0234
YIQ	159.9310, 13.6160, 6.5440

Conversions

Conversions Part 2

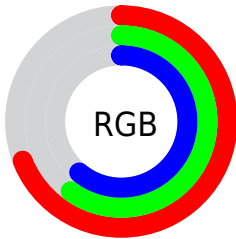
Format	Color
RYB	177, 152, 156
Decimal	11638940
CIELab	65.00, 9.94, 1.33
CIELCh	65, 10.024, 7.618
Yxy	34.0472, 0.3344, 0.3234
Android (android.graphics.Color)	4289829020 (0xFFB1989C)
YUV	159.9310, -1.9380, 14.9695
Hunter-Lab	58.3500, 5.5777, 4.2412

Details

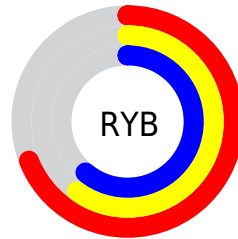
The CIELCh color $65, 10.024, 7.618$ is a light color, and the websafe version is hex 999999 . A complement of this color would be $70, 9.418, 185.204$, and the grayscale version is $66, 0.008, 296.813$.

A 20% lighter version of the original color is $85, 10.185, 8.291$, and $45, 9.981, 6.978$ is the 20% darker color. If you saturate the color by 10%, you get $60, 17.580, 8.793$, and if you desaturate by 10%, it is $70, 2.854, 6.546$.

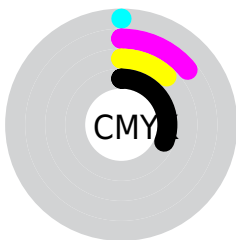
Distribution



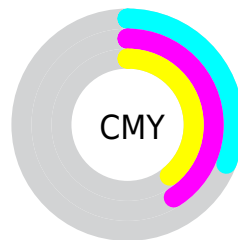
- Red (69%)
- Green (60%)
- Blue (61%)



- Red (69%)
- Yellow (60%)
- Blue (61%)



- Cyan (0%)
- Magenta (14%)
- Yellow (12%)
- Black (31%)



- Cyan (31%)
- Magenta (41%)
- Yellow (39%)

Brightness & Saturation Gradients

These gradients show how the CIELCh color 65, 10.024, 7.618 changes by changing the brightness by 10 percent. The first figure shows a shift by +10% for each color and the second figure -10%.

Similar to the brightness gradients but the following saturation gradients show a change of the CIELCh color 65, 10.024, 7.618 by changing the saturation by 10% instead.

 65, 10.024, 7.618  65, 10.024, 7.618

 100, 10.024, 7.618  55, 10.024, 7.618

 85, 10.024, 7.618  45, 10.024, 7.618

 95, 10.024, 7.618  35, 10.024, 7.618

 25, 10.024, 7.618

 15, 10.024, 7.618

 5, 10.024, 7.618

 0, 10.024, 7.618

 65, 10.024, 7.618  65, 10.024, 7.618

 60, 17.580, 8.793  70, 2.854, 6.546

■ 55, 25.469, 10.195

■ 75, 3.909, 186.016

■ 51, 33.573, 11.921

■ 80, 10.280,
185.233

■ 47, 41.696, 14.085

■ 85, 16.282,
184.597

■ 44, 49.573, 16.820

■ 41, 56.911, 20.263

■ 90, 21.947,
184.041

■ 39, 63.483, 24.488

■ 95, 26.123,
186.039

■ 37, 69.193, 29.361

■ 37, 72.334, 32.117

■ 95, 24.924,
197.880

Harmonies

Complementary

The Complementary color scheme is a pair of colors which are on the opposite of each other on the color wheel.



65, 10.024, 7.618



70, 9.418, 185.204

Rectangle

The Rectangle color scheme consists of four colors that form a rectangle on the color wheel.



65, 10.024, 7.618



65, 10.024, 57.618



65, 10.024, 187.618



65, 10.024, 237.618

Sweetspot

The Sweet Spot groups the original color and five complimentary colors.



65, 10.022, 7.626



89, 3.408, 6.536



65, 15.959, 320.421



47, 2.424, 6.628



96, 0.011, 296.813



48, 0.006, 296.813

Same Dimension

The Same Dimension uses a secret algorithm to generate beautiful new colors.



65, 10.022, 7.626



81, 15.034, 7.974



67, 8.024, 54.555



35, 3.992, 7.118



31, 64.652, 31.473



2, 9.324, 9.247

Inverse Universe

The Inverse Universe completely reimagines the original color for something new.



65, 10.022, 7.626



81, 15.034, 7.974



68, 7.469, 237.063



35, 3.992, 7.118



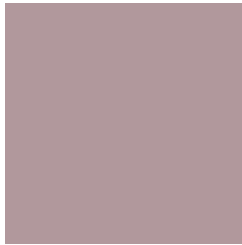
31, 64.652, 31.473



2, 9.324, 9.247

Previews

White Background



This preview shows how the CIELCh color 65, 10.024, 7.618 looks on a white background.

Color Contrast Check

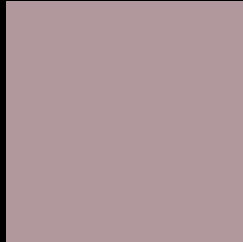
Large Text (above 18pt) WCAG AA × Fail

Any Text WCAG AA × Fail

Large Text (above 18pt) WCAG AAA × Fail

Any Text WCAG AAA × Fail

Black Background



This preview shows how the CIE LCh color 65, 10.024, 7.618 looks on a black background.

Color Contrast Check

Large Text (above 18pt) WCAG AA ✓ Pass

Any Text WCAG AA ✓ Pass

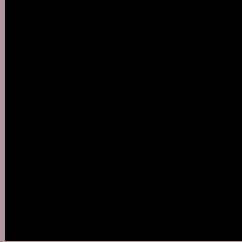
Large Text (above 18pt) WCAG AAA ✓ Pass

Any Text WCAG AAA ✓ Pass

If you want to check with other color combinations, try the [Color Contrast Checker](#).

CIELCh 65, 10.024, 7.618

Background



This preview shows how black text looks on a background with the CIELCh color 65, 10.024, 7.618.



This preview shows how white text looks on a background with the CIELCh color 65, 10.024, 7.618.

Color Blindness Simulation

Color vision deficiency is a very complex topic, and I could not describe the different causes any better than Wikipedia does, so if you want to learn more, you should check out their [article about color blindness](#).

Dichromacy



Original Color

65, 10.024, 7.618

Protanopia

65, 1.611, 335.610

Deuteranopia

65, 8.287, 12.489



Tritanopia
65, 12.079, 350.327

Trichromacy



Original Color
65, 10.024, 7.618

Protanomaly
65, 4.567, 358.395

Deuteranomaly
65, 8.682, 12.884

Tritanomaly
65, 11.598, 355.119

Monochromacy



Original Color
65, 10.024, 7.618

Achromatopsia
66, 0.008, 296.813

Achromatomaly
66, 3.517, 10.556

CSS Examples

Text

The CSS property to change the color of the text to CIELCh 65, 10.024, 7.618 is called "color". The color property can be set on classes, ids or directly on the HTML element.

This example shows how text in the color `rgb(177, 152, 156)` looks like.

```
.text, #text, p{  
    color:rgb(177, 152, 156)  
}
```

If you want to add a text shadow in that color use the text-shadow property, you can generate a text shadow directly with our [CSS Text Shadow Generator](#).

Here you see how black text with a 4 pixel rgb(177, 152, 156) colored shadow looks like.

```
.shadow{ text-shadow: 4px 4px 2px rgb(177, 152, 156) }
```

Border

The CSS property to change the border of an element to CIELCh 65, 10.024, 7.618 is called "border". The border property can be set on classes, ids or directly on the HTML element.

This example shows the color as border, it can be applied via the CSS property "border" or "border-color".

```
.border, #border, table{ border:4px solid rgb(177, 152, 156) }
```

If only the border color should be changed use the property `border-color`.

```
.border{ border-color:rgb(177, 152, 156) }
```

If you want to add a box shadow in that color use:

Here you see how a box with a 4 pixel `rgb(177, 152, 156)` colored shadow looks like.

```
.boxshadow{ -moz-box-shadow:4px 4px 4px  
4px rgb(177, 152, 156); -webkit-box-  
shadow:4px 4px 4px 4px rgb(177, 152, 156);  
box-shadow:4px 4px 4px 4px rgb(177, 152,  
156) }
```

Background

The CSS property to change the background color of an element to CIELCh 65, 10.024, 7.618 is called "background". The background property can be set on classes, ids or directly on the HTML element.

```
.background, #background, body{  
background: rgb(177, 152, 156) }
```

If only the background color should be changed can be used:

```
.background{ background-color: rgb(177,  
152, 156) }
```

This example shows the color as background, it is applied via the CSS property "background".

To optimize and compress your CSS code, you can use our [online CSS compressor and optimizer](#) based on csstidy. If you want to create a linear or radial gradient as background or border, check our [CSS Gradient Generator](#).

Hey! You found this booklet interesting? Support Converting Colors with the new Membership Option!

The pro membership hides all ads, plus gives you double the colors in the color bucket, and more awesome pro features!

[Learn more, Memberships starting at \\$2.50/m!](#)

**Follow me
on Twitter!**

@ConvertingColor